



Curtin Creek

COMMUNITY PARK



Welcome

Clark County is launching a new effort to plan the future of Curtin Creek Community Park. In 1999, Clark County and the City of Vancouver jointly purchased a 38.7-acre area at 12603 NE 72nd Avenue to establish a Vancouver fire station and a county park in the Greater Brush Prairie Neighborhood. The fire house is built and now we need your input to start planning the future of this community park!

Today, to further our progress, we invite you to:

- Review the project materials around the room.
- Speak to County staff and project team members.
- Share what features you'd like to see at the new park.



Existing Conditions

Curtin Creek

COMMUNITY PARK



Athletic Fields

Curtin Creek
COMMUNITY PARK



Multi-Purpose Sport Facilities



Flexible Viewing



Bullpen



Plaza Space



Futsal Court



Field Side Picnic Table



Field Lining



Hardscape



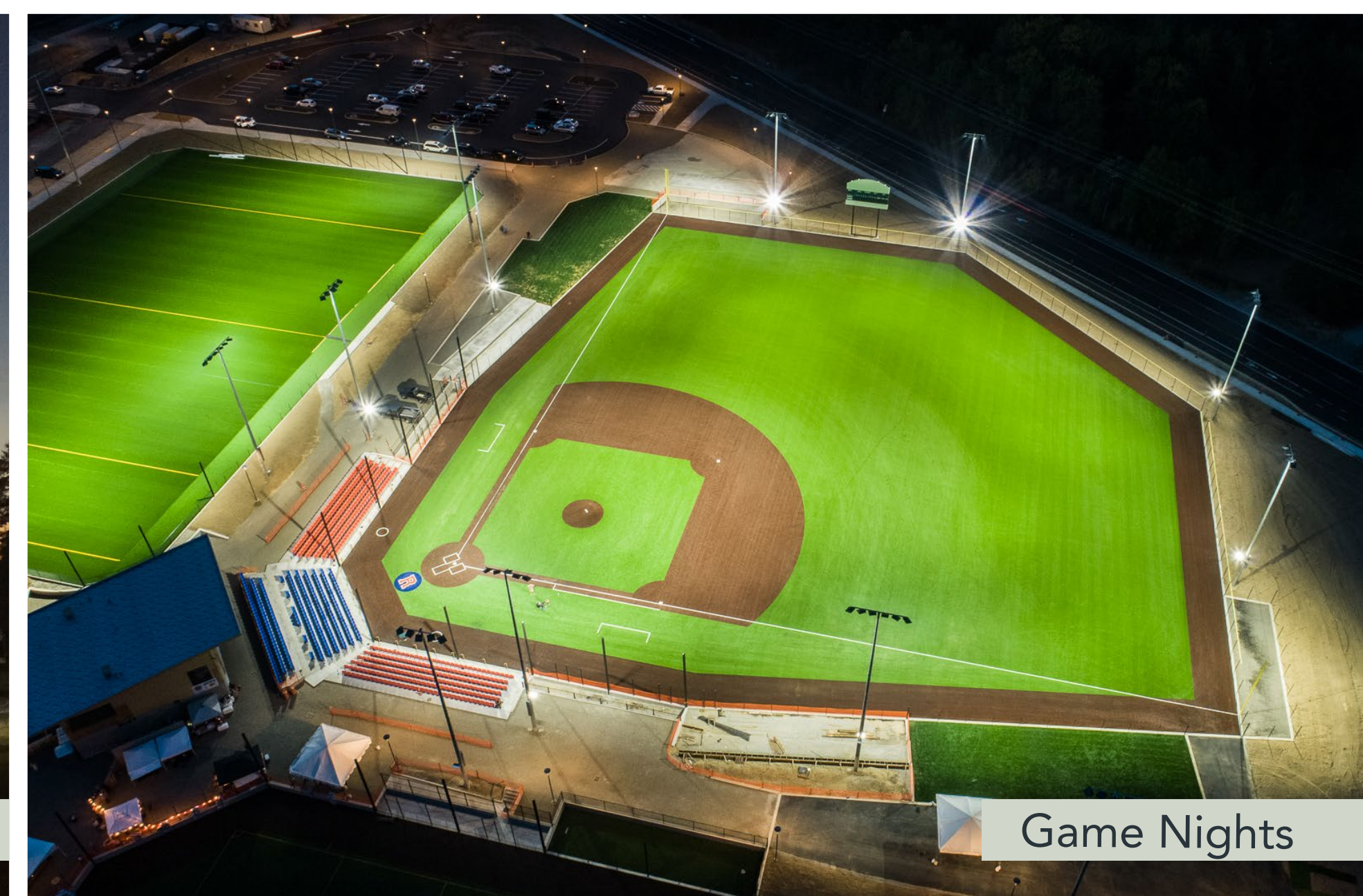
Football/Soccer/Lacrosse



Dugouts



Field Lights



Game Nights



November 2019 Open House

Curtin Creek COMMUNITY PARK

clark.wa.gov/public-works/curtin-creek-community-park

Active Recreation

Curtin Creek

COMMUNITY PARK



Pump Track



Bocce Courts



BMX Course



Flexible Lawn Space



Skate Park



Independent Fitness



Paths & Trails



Multi-purpose Courts



Trail-side Exercise Stations



Pickleball Court



Off-Leash Dog Park



November 2019 Open House

Curtin Creek COMMUNITY PARK

clark.wa.gov/public-works/curtin-creek-community-park

Park Amenities

Curtin Creek COMMUNITY PARK



Natural Areas



Playground



Site Furnishing



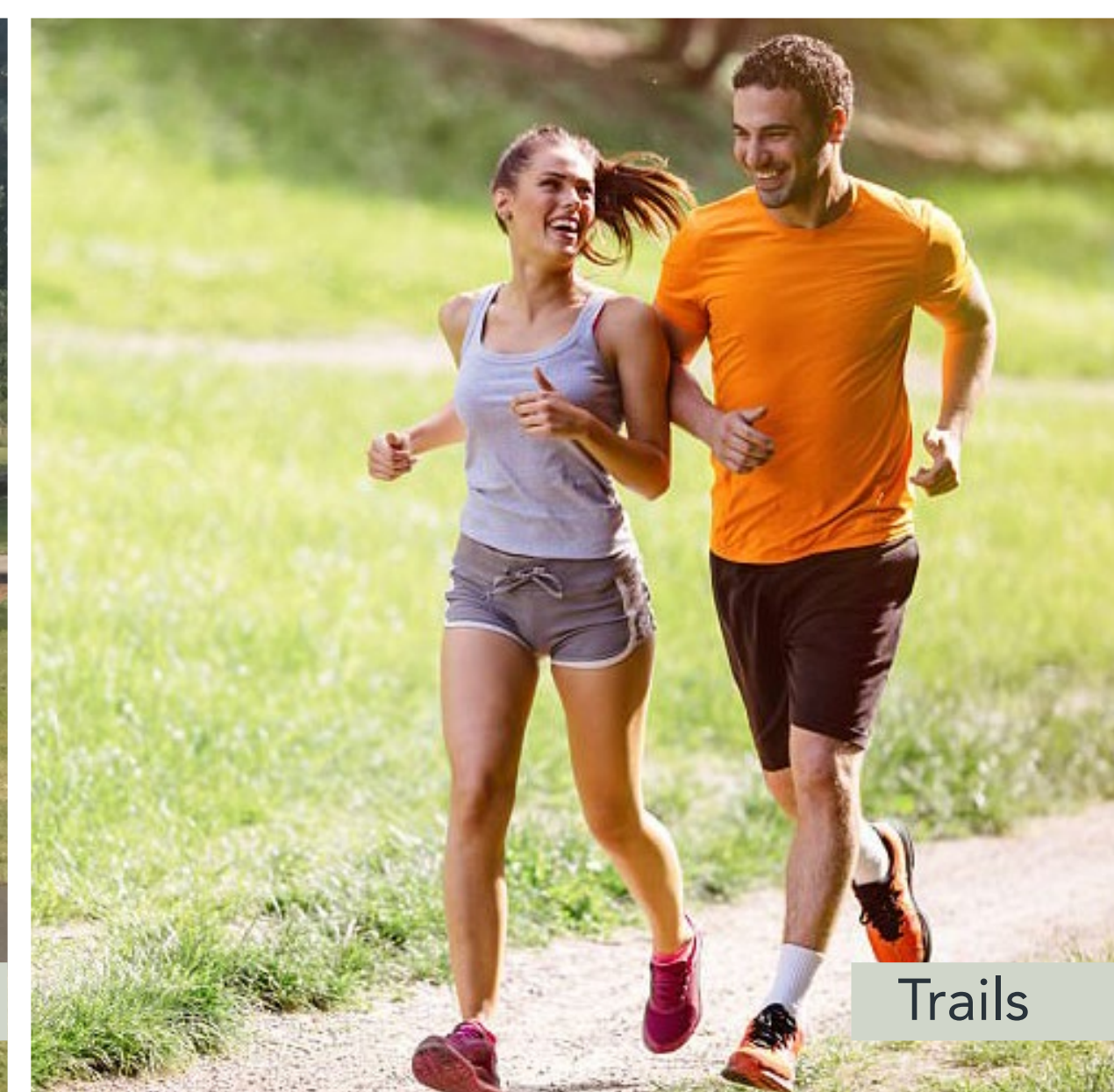
Picnic Areas



Splash Pad



Playground



Trails



Open Space



Sustainable Landscapes



Movies in the Park



Nature Play



November 2019 Open House

Curtin Creek COMMUNITY PARK

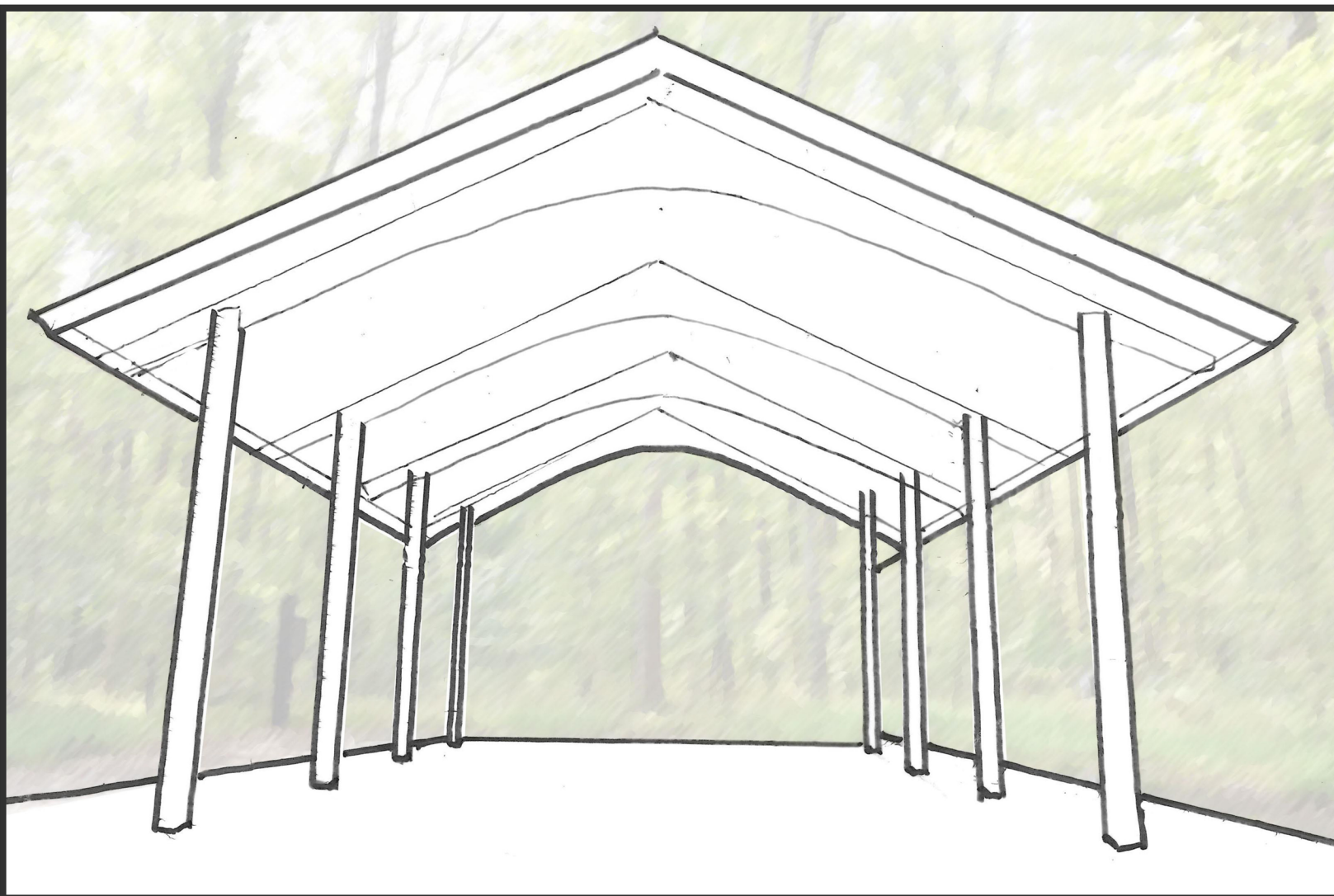
clark.wa.gov/public-works/curtin-creek-community-park



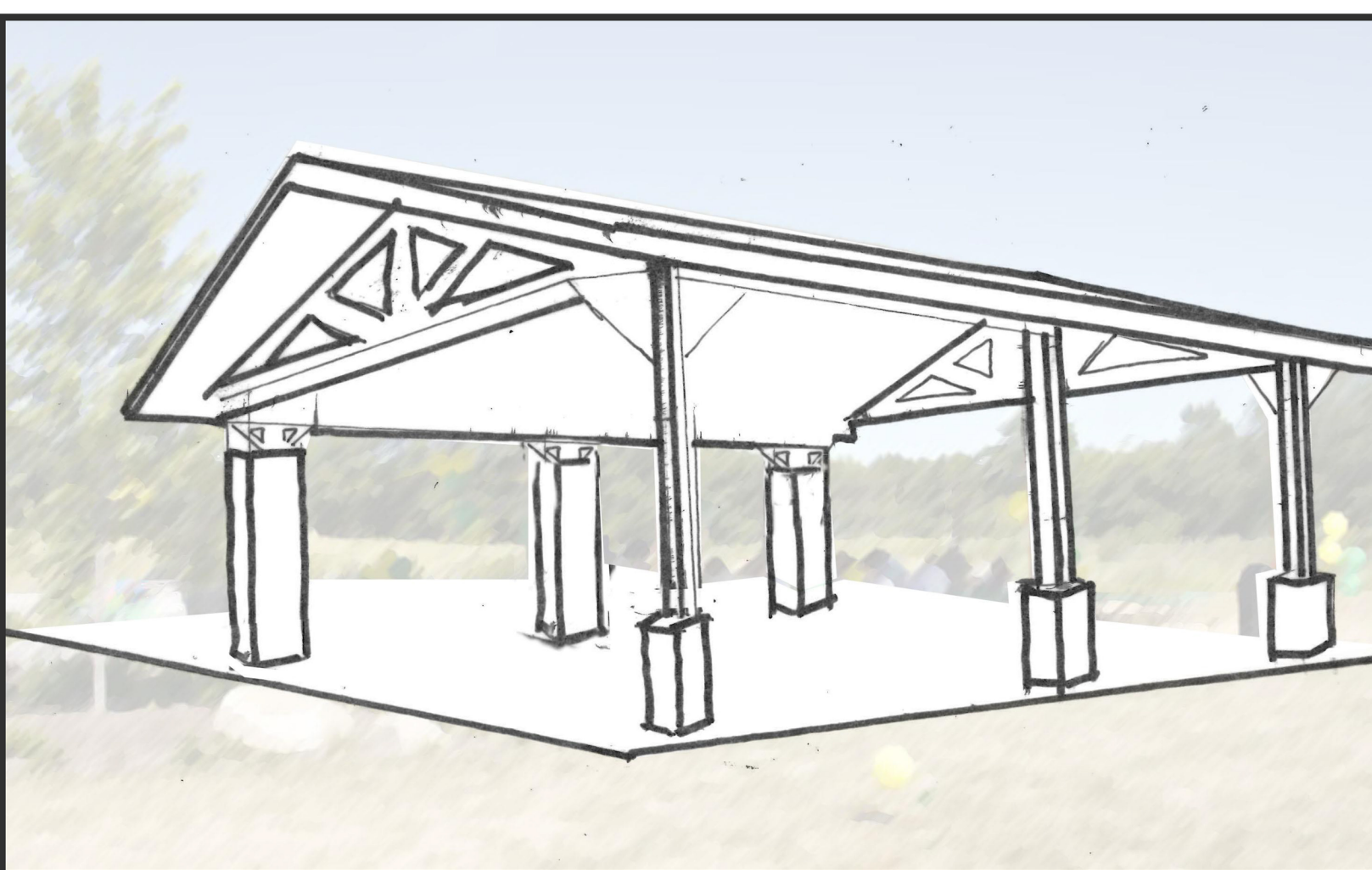
FELIDA



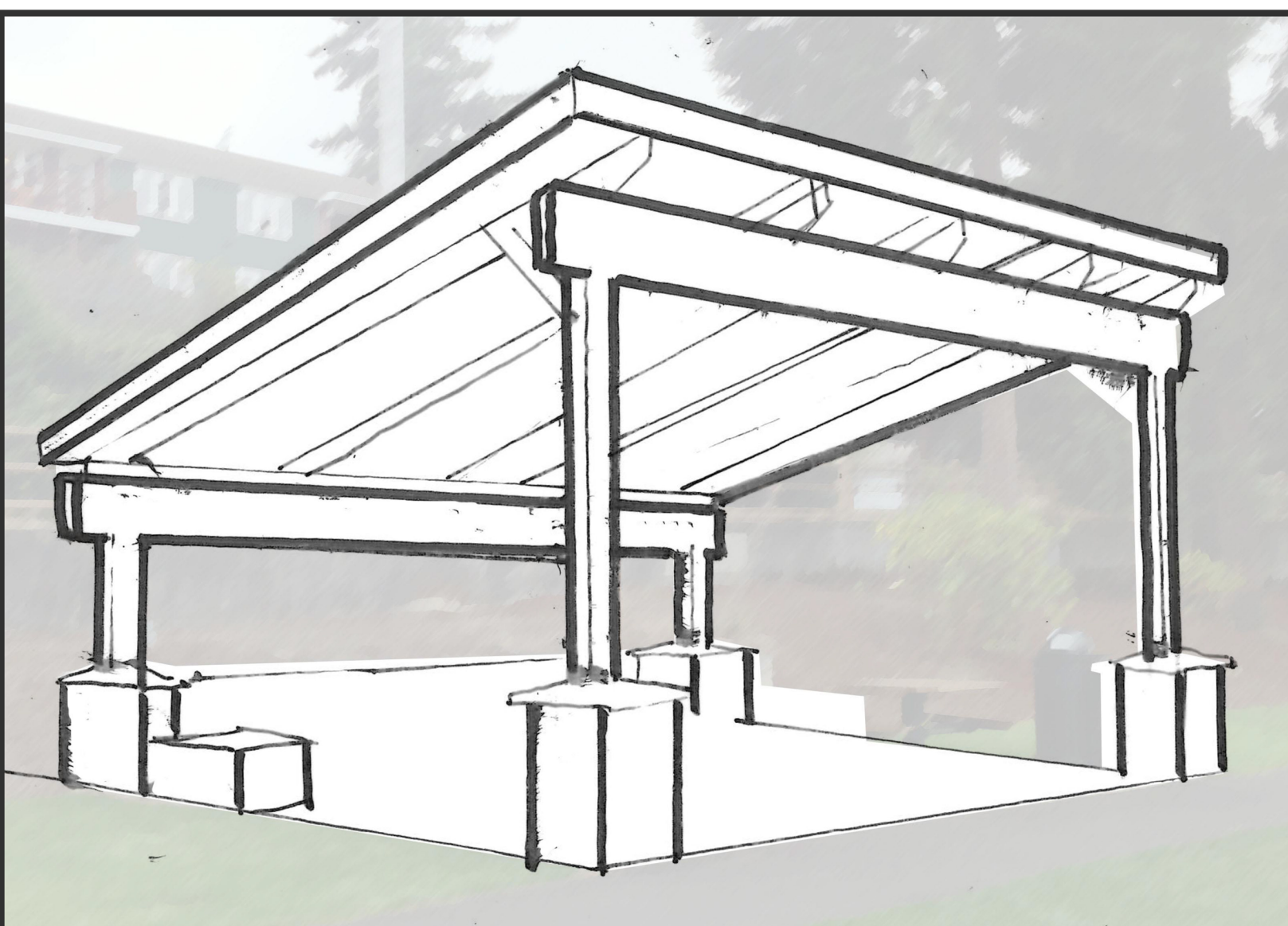
FAIRGROUNDS



TYPOLGY A



TYPOLGY B



TYPOLGY C

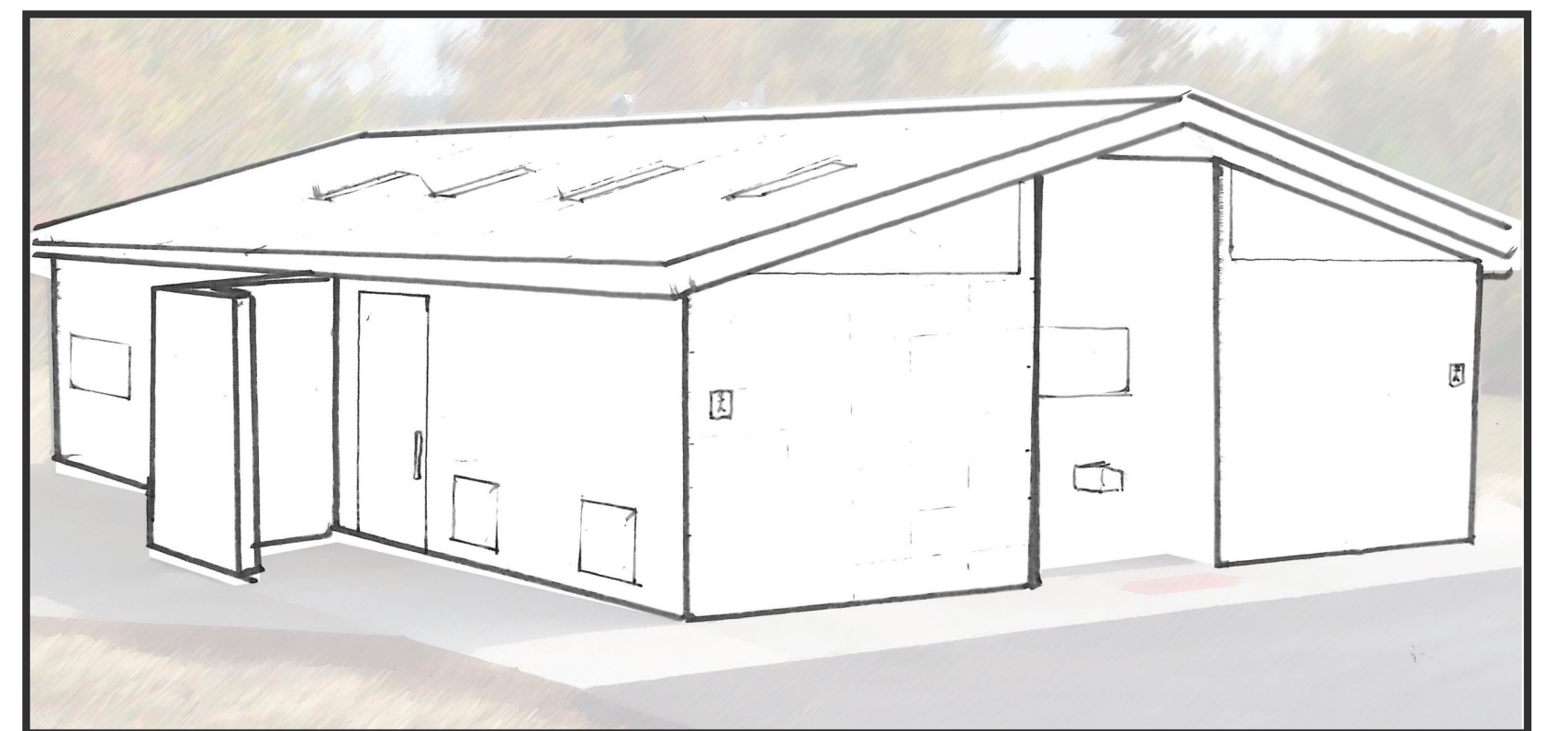
PICNIC SHELTERS



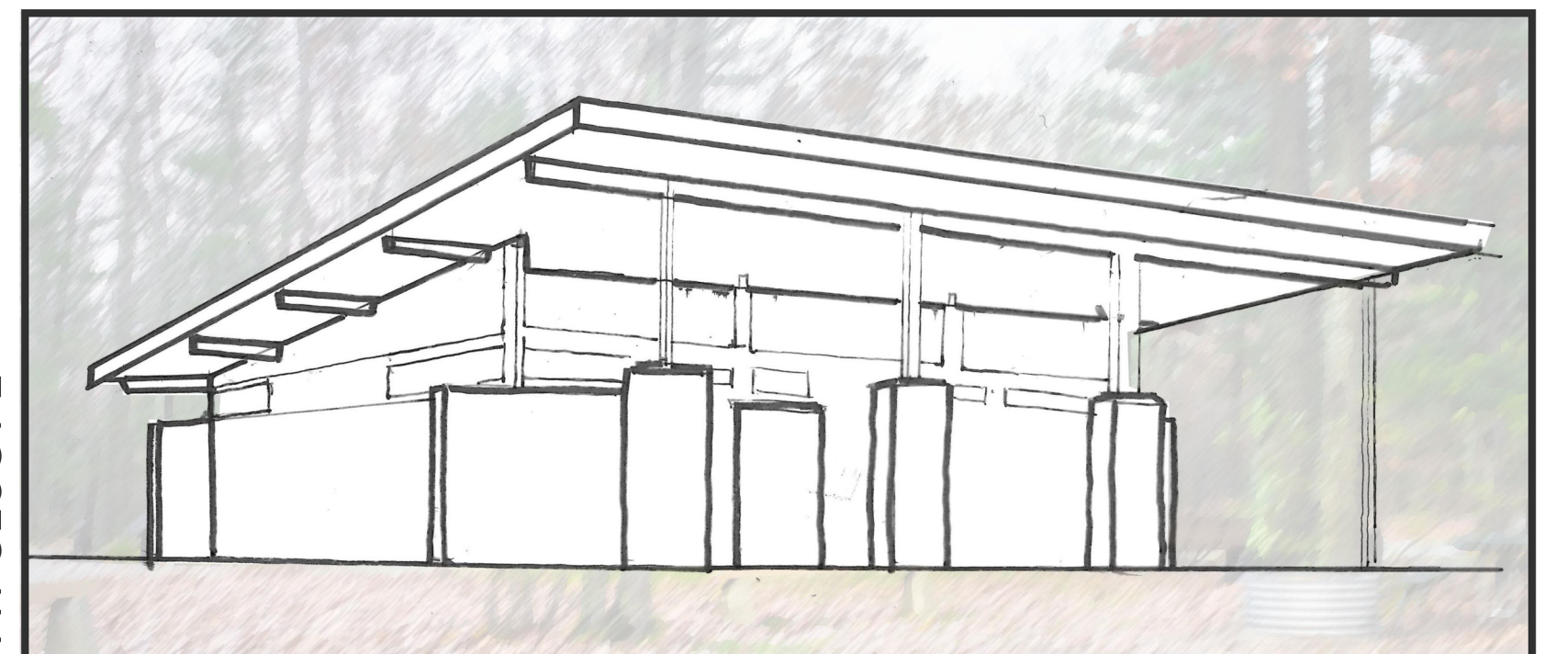
FELIDA



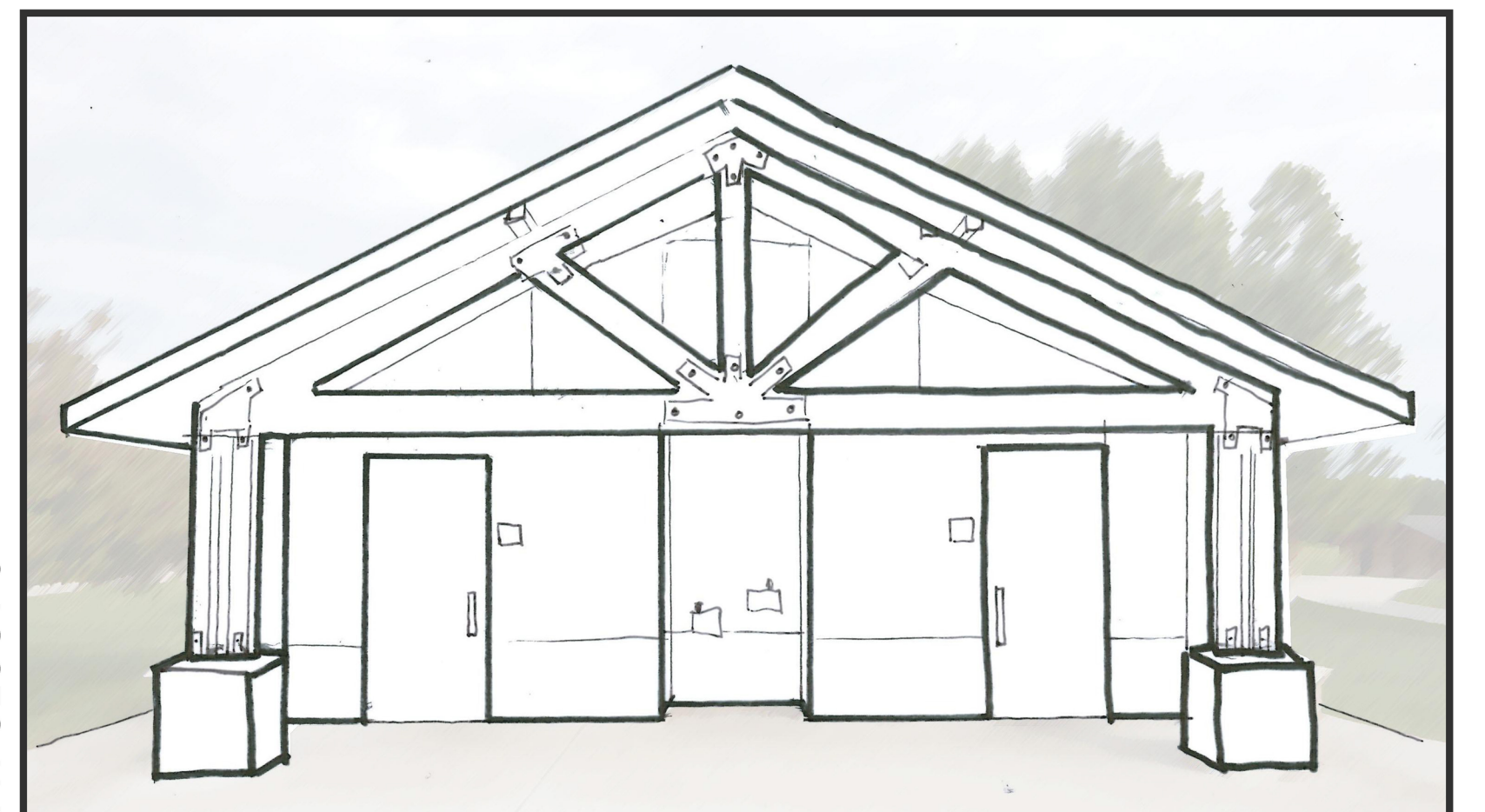
FAIRGROUNDS



TYPOLGY 1



TYPOLGY 2



TYPOLGY 3

FACILITIES

Concept A

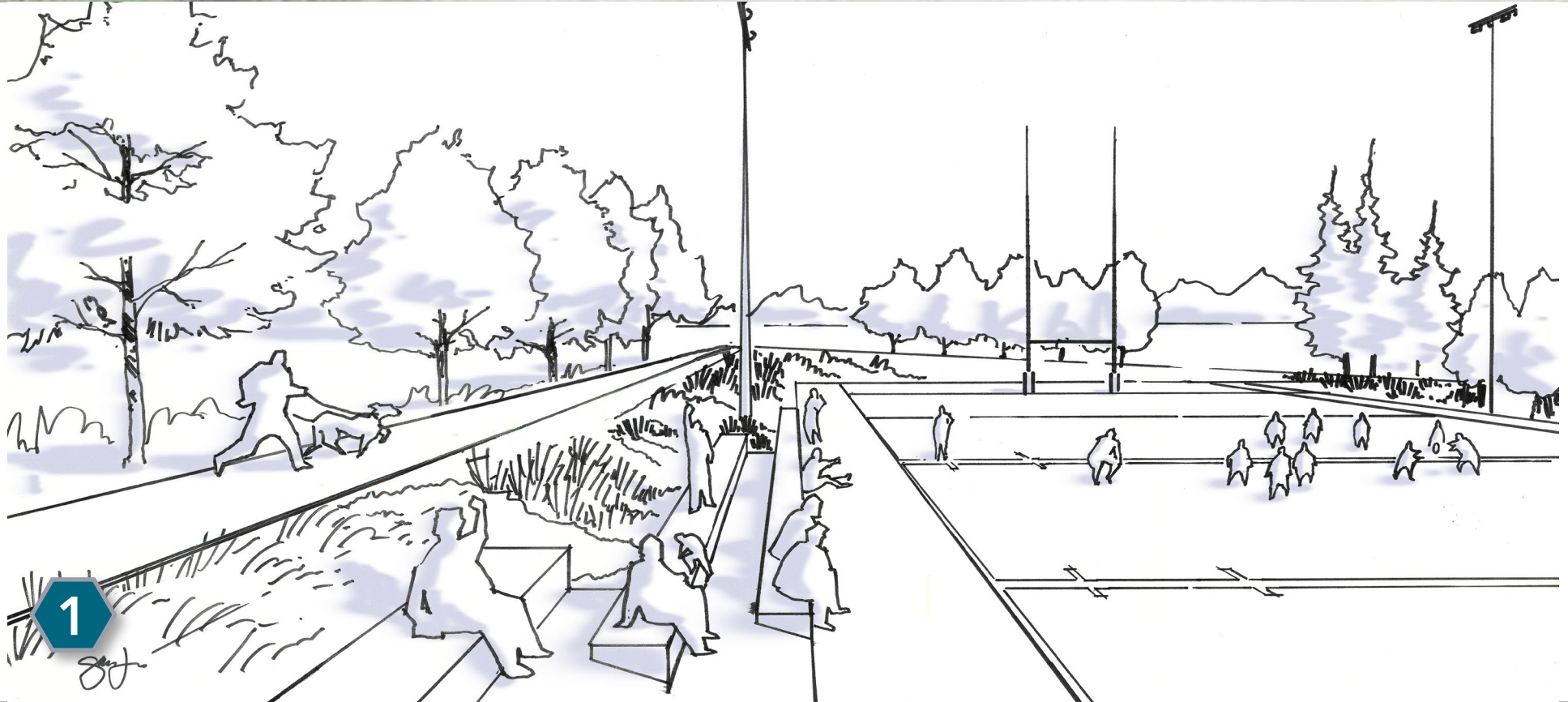
Curtin Creek COMMUNITY PARK

- 1 Hillside Seating
- 2 Rugby/Soccer (360'x210')
- 3 Full Size Baseball/Soccer (With Lights)
- 4 Little League/Soccer (With Lights)
- 5 Parking
- 6 Pickleball Courts
- 7 Independent Fitness
- 8 Basketball/Sport Court
- 9 Picnic Area With Shelter
- 10 Restrooms
- 11 Entry Plaza
- 12 Drop-off Zone
- 13 Playground/Nature Play
- 14 Trail
- 15 Flexible Lawn Space



ROBERTSON
ENGINEERING, PC

WSP **LSW**
ARCHITECTS



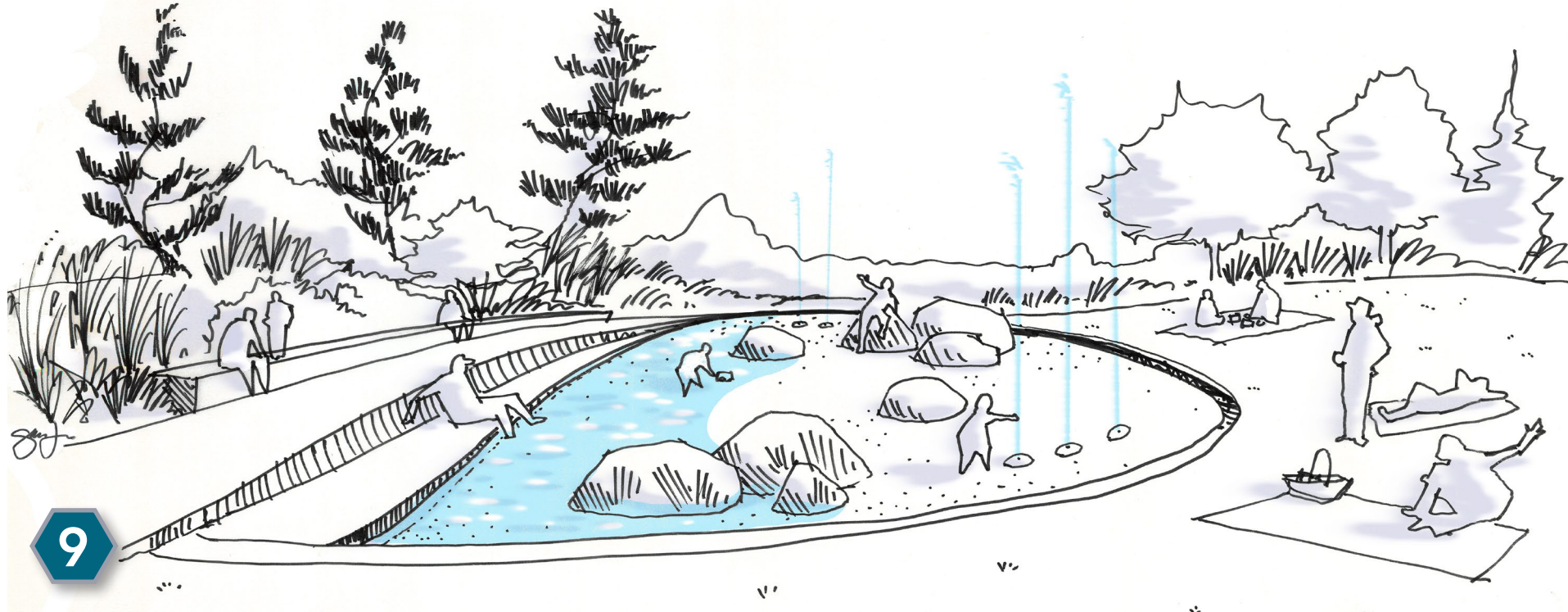
November 2019 Open House

Curtin Creek COMMUNITY PARK

clark.wa.gov/public-works/curtin-creek-community-park

Concept B

- 1 Tennis/Pickleball
- 2 Basketball
- 3 Drop-off Area
- 4 Entry Plaza
- 5 Parking
- 6 Off Leash Dog Park
- 7 Little League/Soccer Field (With Lights)
- 8 Playground
- 9 Water Play/Splash Pad
- 10 Restrooms
- 11 Rugby/Soccer Field (360'x210')
- 12 Picnic Shelter
- 13 Picnic Tables
- 14 Flexible Lawn Space
- 15 Trails
- 16 Fitness Stations



November 2019 Open House

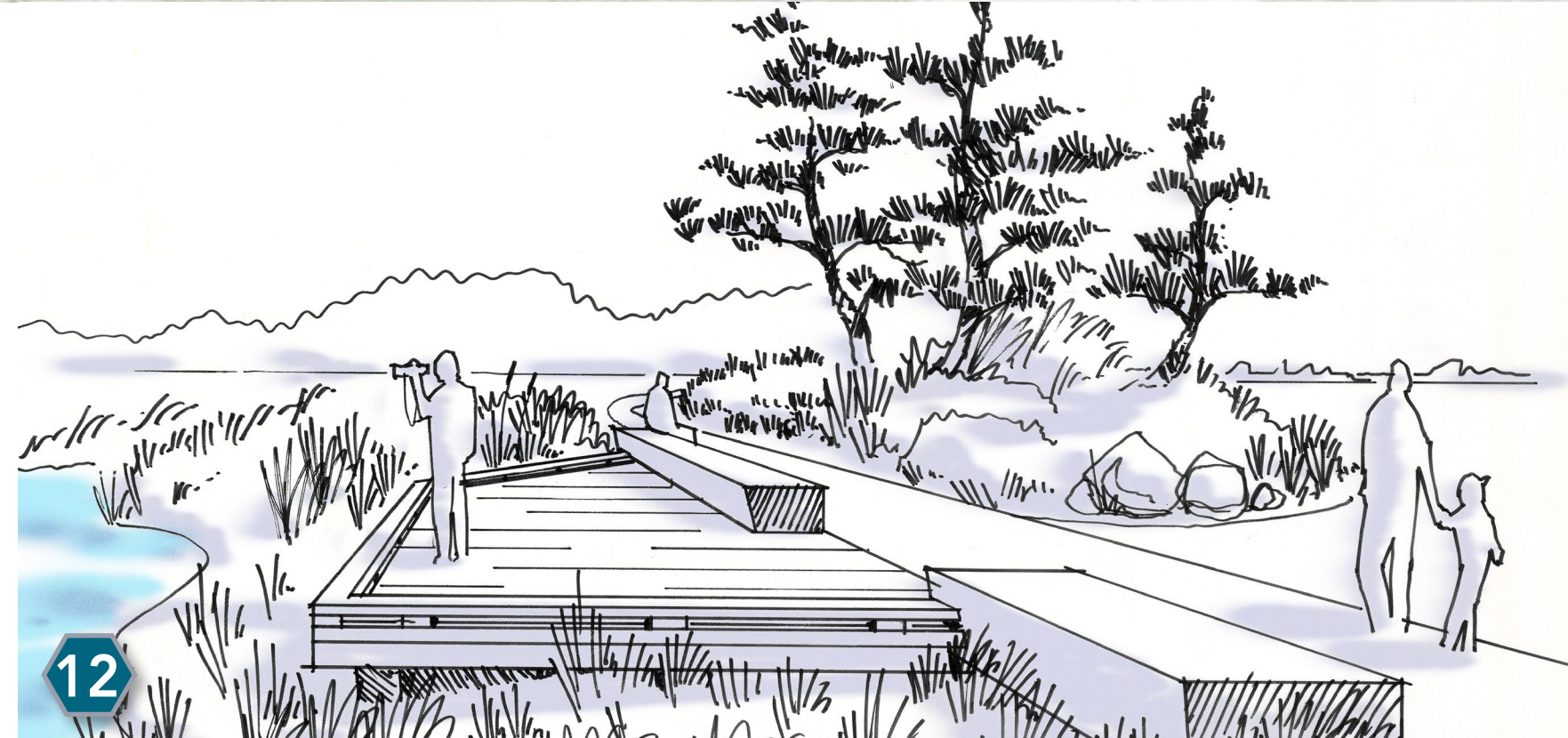
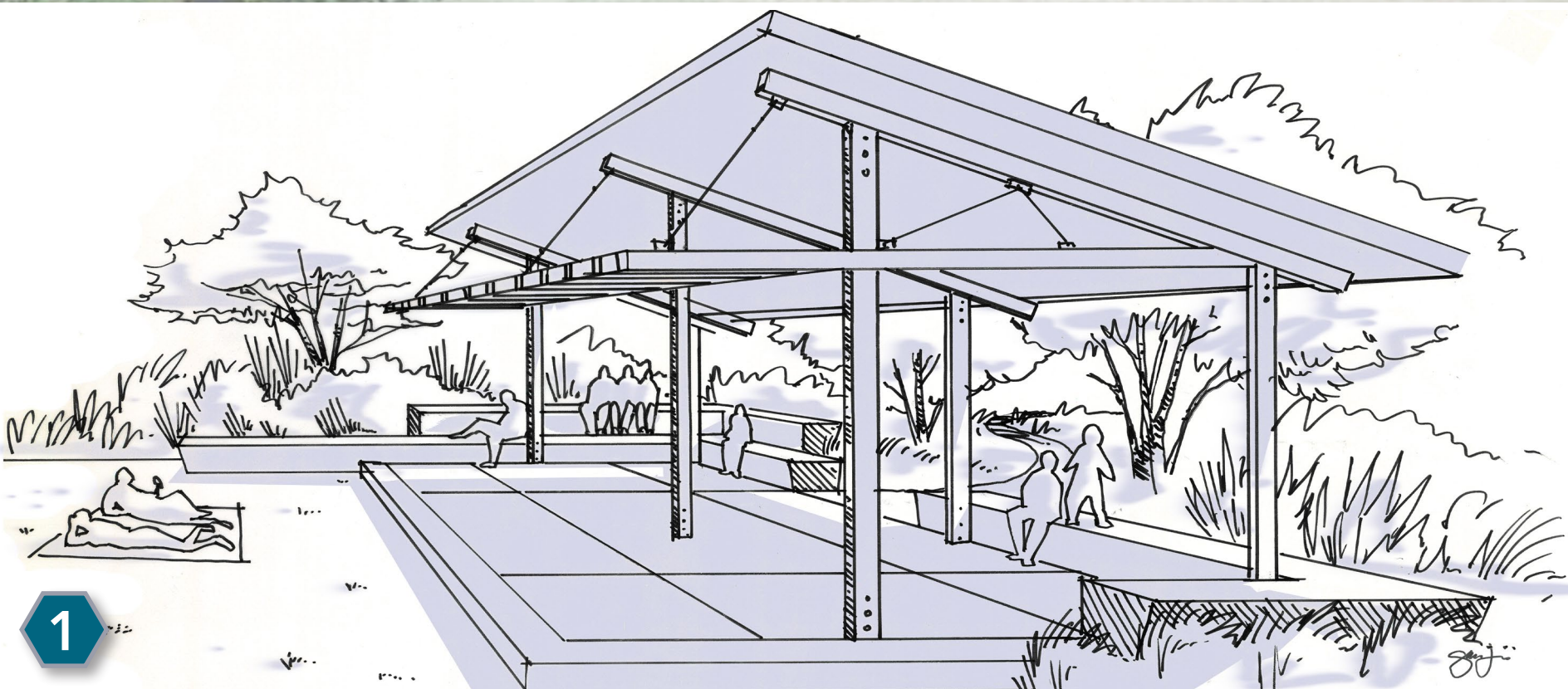
Curtin Creek COMMUNITY PARK

clark.wa.gov/public-works/curtin-creek-community-park

Concept C

Curtin Creek COMMUNITY PARK

- 1 Picnic Shelter
- 2 Bocce Court
- 3 Little League/Soccer (With Lights)
- 4 Flexible Lawn Space
- 5 Parking
- 6 Picnic Area
- 7 Playground
- 8 Restrooms
- 9 Rugby/Soccer (360'x210')
- 10 BMX/Pump Track
- 11 Trails
- 12 Wetland Viewpoint



November 2019 Open House

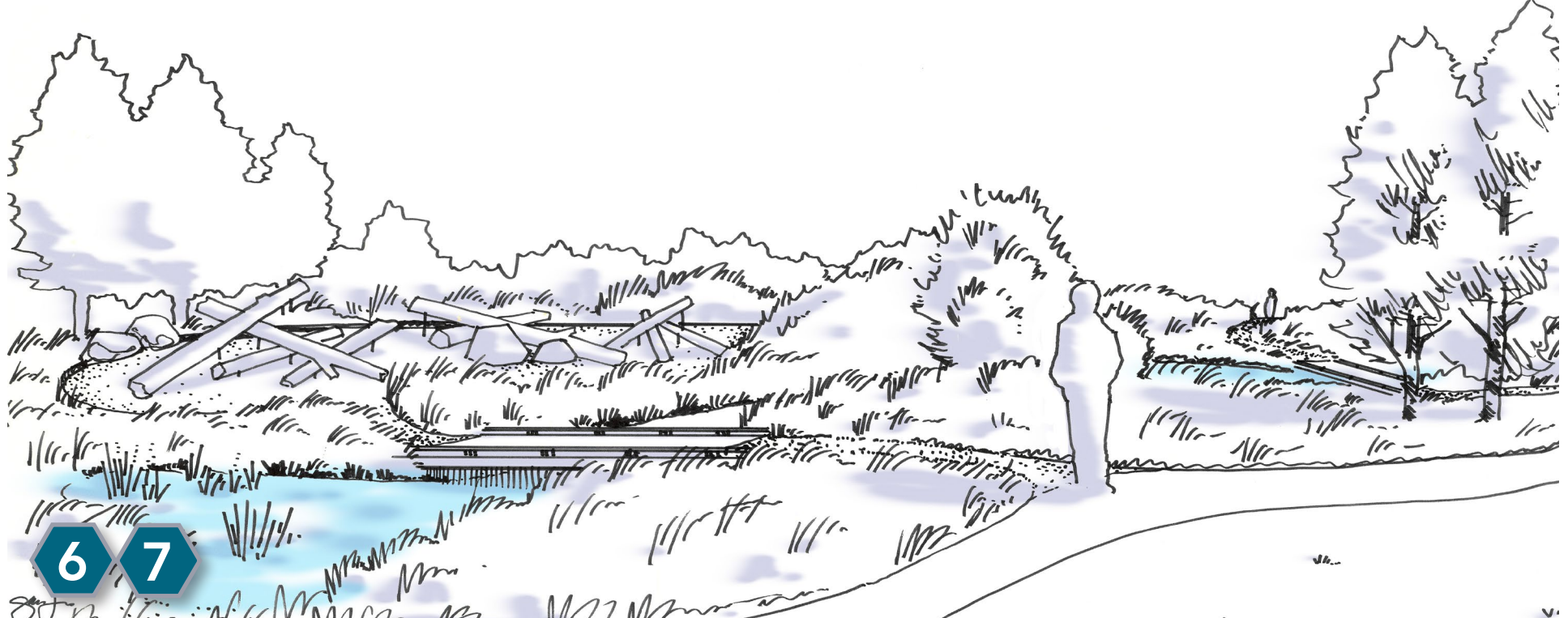
Curtin Creek COMMUNITY PARK

clark.wa.gov/public-works/curtin-creek-community-park

Concept D

Curtin Creek COMMUNITY PARK

- 1 Half-Court Basketball/Pickle Ball
- 2 Picnic Area
- 3 Picnic Shelter
- 4 Little League Baseball (With Lights)
- 5 Trails
- 6 Stormwater Area
- 7 Nature Play Area
- 8 Parking
- 9 Playground
- 10 Multi-purpose Soccer Fields (With Lights 330'x210')
- 11 Restrooms/Concession Building
- 12 Full Size Baseball/Soccer (With Lights)
- 13 Flexible Lawn Space



November 2019 Open House

Curtin Creek COMMUNITY PARK

clark.wa.gov/public-works/curtin-creek-community-park