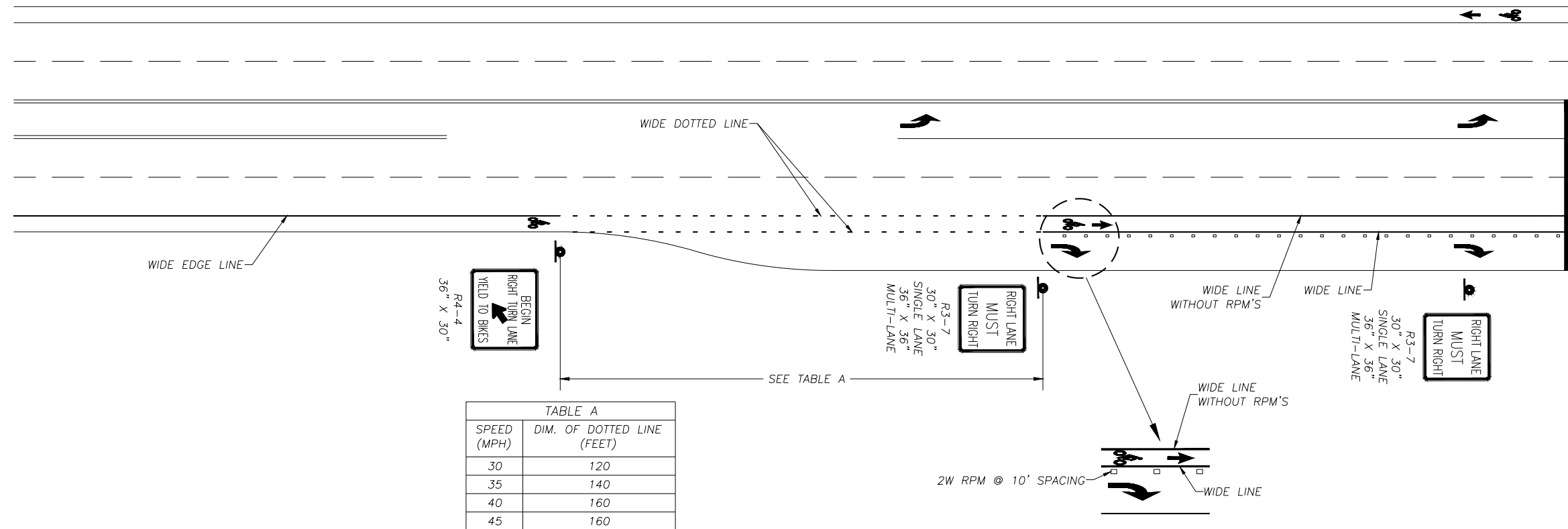


**BIKE LANE SIGNING AND STRIPING
SCENARIO BL1
RIGHT TURN ONLY LANE**



SPEED (MPH)	DIM. OF DOTTED LINE (FEET)
30	120
35	140
40	160
45	160

NOTES:

1. THE MINIMUM DIMENSION OF DOTTED LINE, WITH WRITTEN JUSTIFICATION, SHALL NOT BE LESS THAN 100 FEET.
2. THE DIMENSIONS IN TABLE A ARE FOR A SINGLE DEDICATED RIGHT TURN LANE ONLY.
3. A 120 FEET LENGTH DOTTED LINE DIMENSION MAY BE USED FOR ALL SPEEDS FOR RIGHT TURN POCKET (AS DEFINED BY WSDOT DESIGN MANUAL CHAPTER 1310).
3. THE REQUIRED LENGTH OF DOTTED LINE MAY BE CHANGED BASED ON TRAFFIC VOLUME, SPEED AND ENGINEERING STUDY.

REV. NO.	DATE	BY	APPR

DWG:



Department of Public Works
CLARK COUNTY WASHINGTON
proud past, promising future

BIKE LANE SIGNING AND STRIPING SCENARIO BL1		STANDARD T13.0
APPROVED <i>[Signature]</i> COUNTY ENGINEER		DETAIL
07/17/19 DATE	DRAWN	DATE