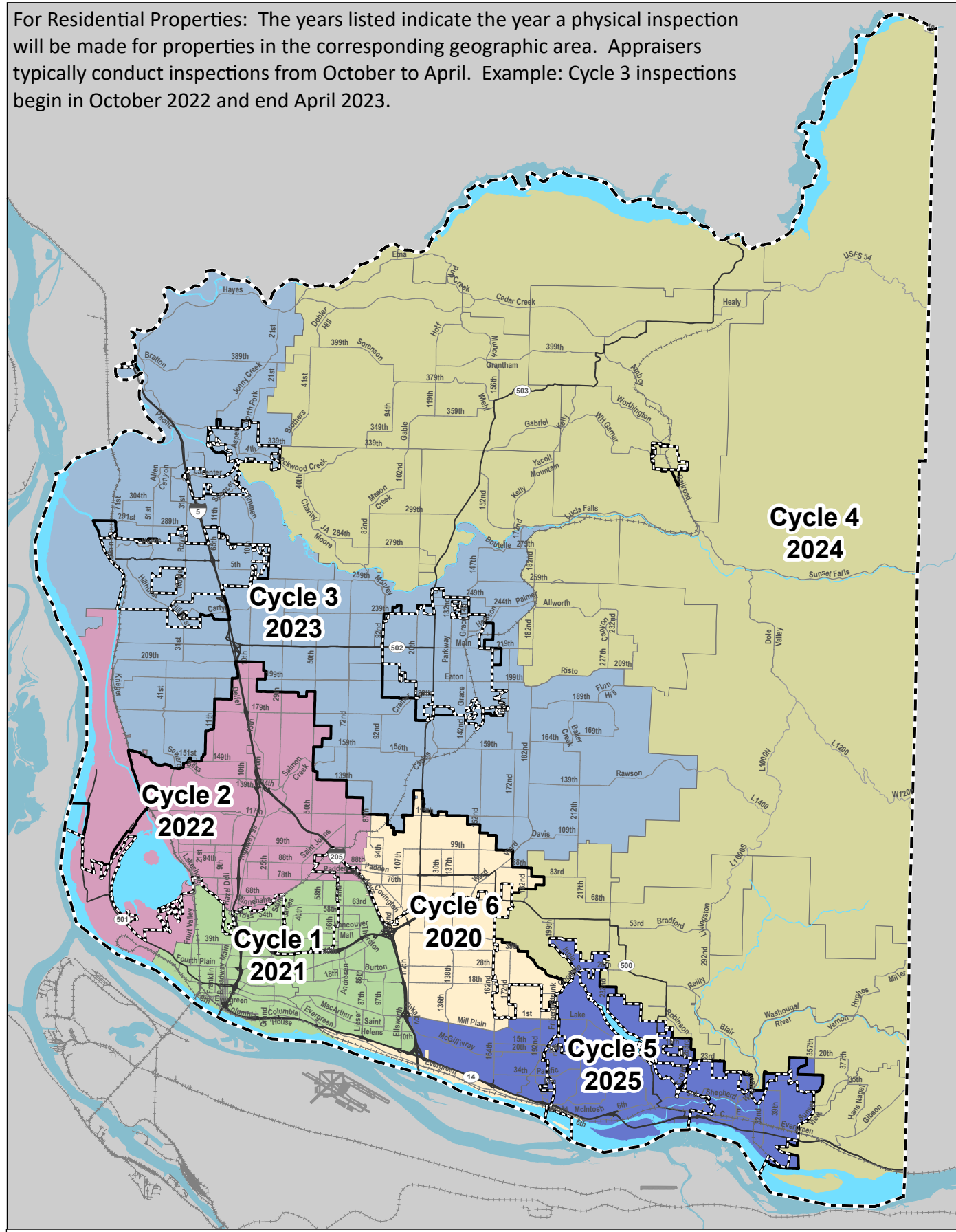


For Residential Properties: The years listed indicate the year a physical inspection will be made for properties in the corresponding geographic area. Appraisers typically conduct inspections from October to April. Example: Cycle 3 inspections begin in October 2022 and end April 2023.



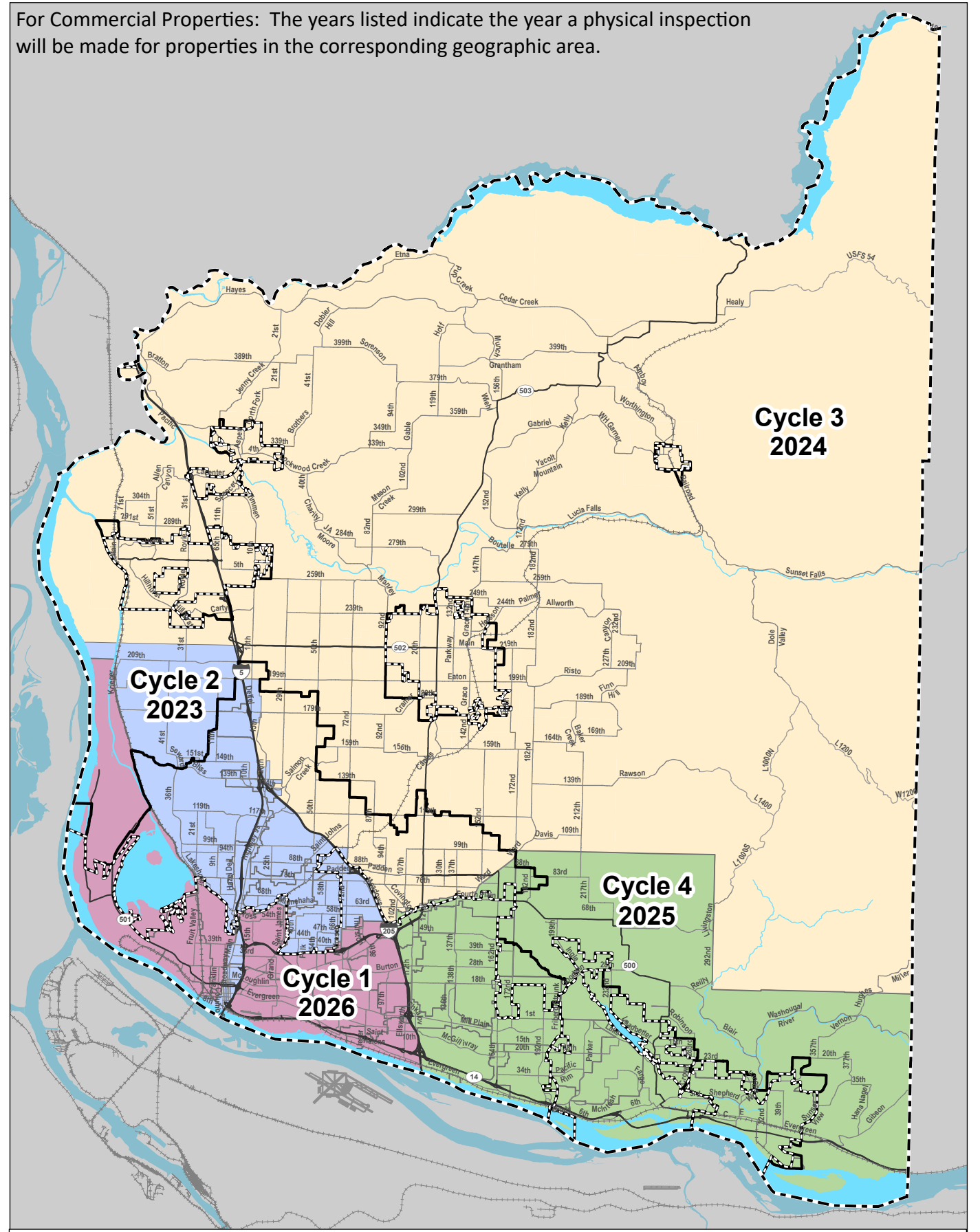
**CLARK COUNTY, WASHINGTON**

**NOTE:** Information shown on this map was collected from several sources. Clark County accepts no responsibility for any inaccuracies that may be present.

**Residential Appraisal Cycle Schedule**

0 5 Miles

For Commercial Properties: The years listed indicate the year a physical inspection will be made for properties in the corresponding geographic area.



**CLARK COUNTY, WASHINGTON**

**NOTE:** Information shown on this map was collected from several sources. Clark County accepts no responsibility for any inaccuracies that may be present.

**Commercial Appraisal Cycle Schedule**

0 5 Miles