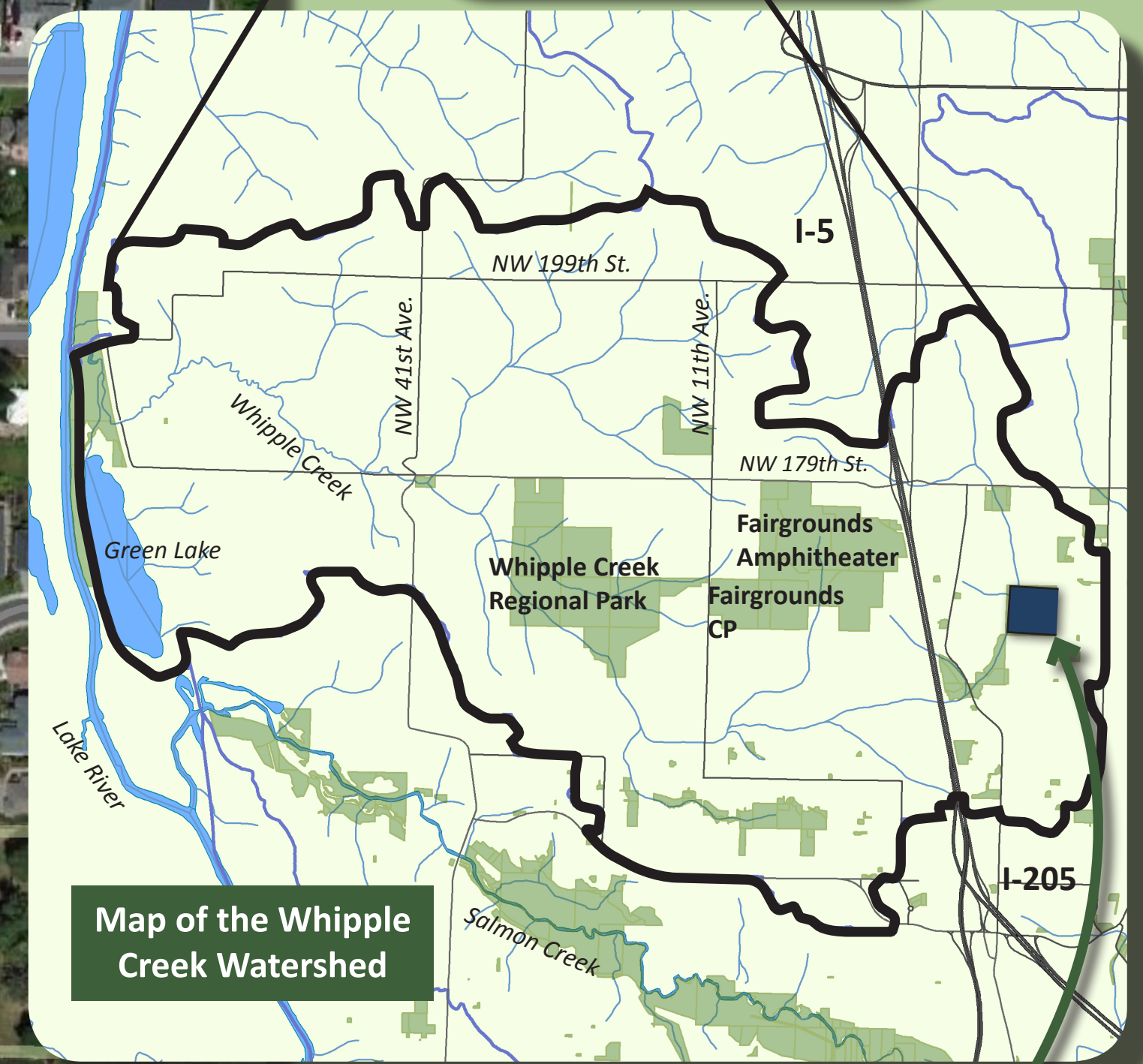




Welcome to

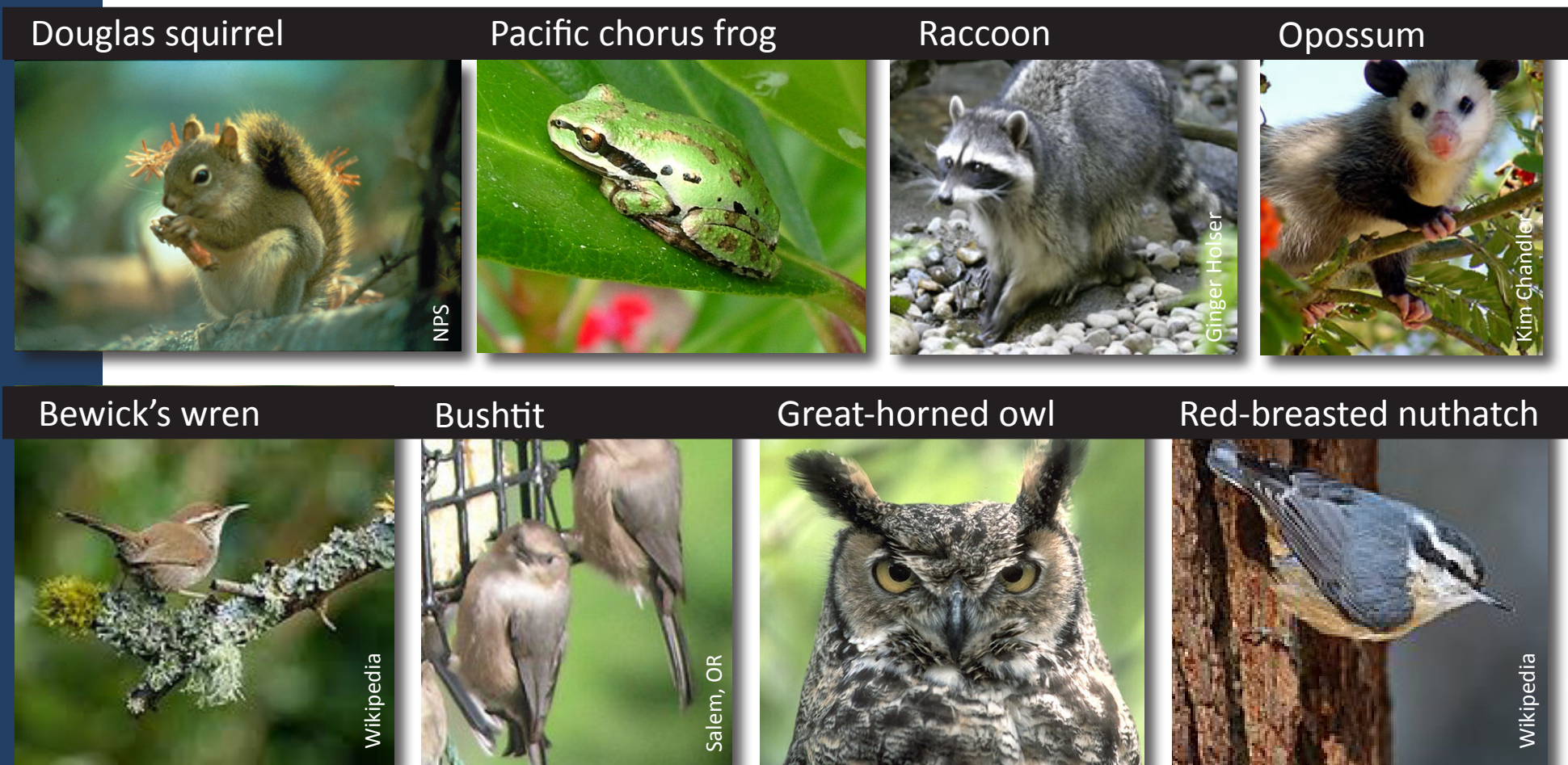
WHIPPLE CREEK HOLLOW Nature Area



The Whipple Creek Hollow Nature Area is at the headwaters of the Whipple Creek watershed. The watershed has had declining health due to increased urbanization in the watershed. Protecting natural areas, such as this, helps protect water quality and wildlife habitat for the region.

Enjoy your visit to the nature area:

- Please stay on the designated trails to prevent damage to plants and habitat.
 - Leave no trace - pack in your supplies and then pack them out. No garbage service or restrooms are provided on site.
 - This property provides habitat for at least 89 types of mammals, birds and fish. Can you spot some wildlife?
- Coyote, raccoon, opossum, black-tailed deer, bat, chipmunk
 - Pacific chorus frog, garter snake, rough skinned newt
 - Crow, red-tailed hawk, kestrel, Cooper's hawk, great-horned owl
 - American goldfinch, evening grosbeak, pine siskin, marsh wren
 - Great blue heron, mallard, red-winged blackbird, flycatchers



Site restoration funded by:
Clark County Clean Water Fees and
the American Recovery and Reinvestment Act.



Learn more about this site at
www.clark.wa.gov/whipplecreek
(360) 397-2121

If you are interested in
volunteering at this site visit
www.clark.wa.gov/environment/Volunteer

