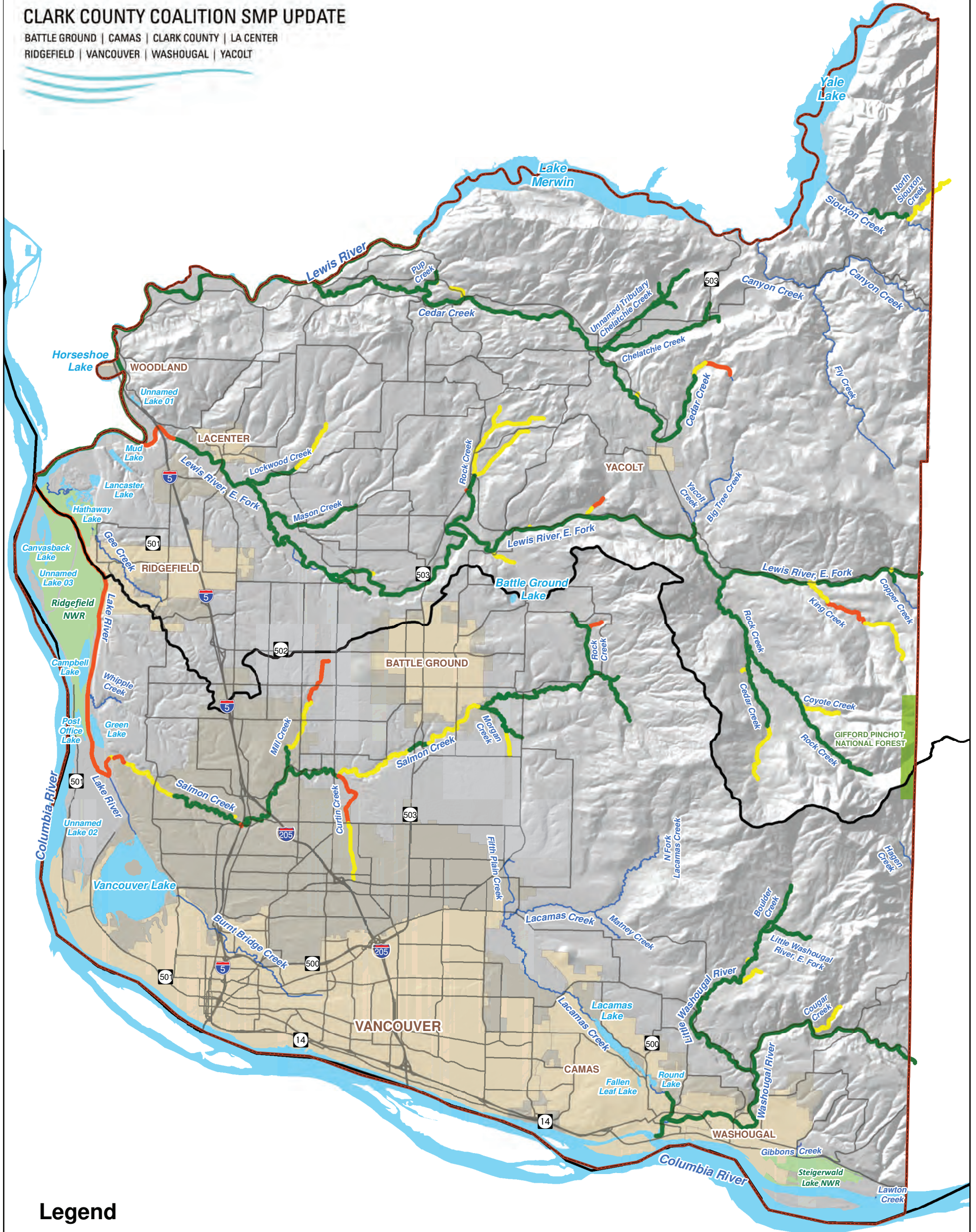


**Appendix A**  
**EDT Recovery Scenario**



# CLARK COUNTY COALITION SMP UPDATE

BATTLE GROUND | CAMAS | CLARK COUNTY | LA CENTER  
 RIDGEFIELD | VANCOUVER | WASHOUGAL | YACOLT



## Legend

### Restoration Needs

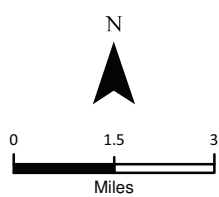
#### Stream Channel Habitat Structure and Bank Stability

- High (Restoration Benefit)
- Medium
- Low



SMA Grant Agreement No. G1000058  
 Task 4.01  
 Coordinate System: State Plane NAD1983 (ft)  
 Washington South FIPS 4602

NOTE: Map data shown here are the property of the sources listed below. Inaccuracies may exist, and ESA Adolphson implies no warranties or guarantees regarding any aspect of data depiction.



**Map A-1**  
 Restoration Needs  
 Multi-Species Priorities - Stream Channel  
 Habitat Structure and Bank Stability

Data Sources: LCRFRB, 2004 (2008); Clark County, 2009; DNR, 2007; Department of Ecology, 2009; ESRI, 2008



# CLARK COUNTY COALITION SMP UPDATE

BATTLE GROUND | CAMAS | CLARK COUNTY | LA CENTER  
 RIDGEFIELD | VANCOUVER | WASHOUGAL | YACOLT



## Legend

### Multi-Species Priorities

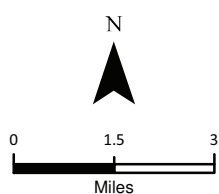
#### Off channel & side channel habitat

- High (Restoration Benefit)
- Medium
- Low



SMA Grant Agreement No. G1000058  
 Task 4.01  
 Coordinate System: State Plane NAD1983 (ft)  
 Washington South FIPS 4602

NOTE: Map data shown here are the property of the sources listed below. Inaccuracies may exist, and ESA Adolphson implies no warranties or guarantees regarding any aspect of data depiction.



## Map A-2 Restoration Needs Multi-Species Priorities - Off Channel and Side Channel Habitat

Data Sources: LCRFRB, 2004 (2008); Clark County, 2009; DNR, 2007; Department of Ecology, 2009; ESRI, 2008



# CLARK COUNTY COALITION SMP UPDATE

BATTLE GROUND | CAMAS | CLARK COUNTY | LA CENTER  
 RIDGEFIELD | VANCOUVER | WASHOUGAL | YACOLT



## Legend

### Multi-Species Priorities

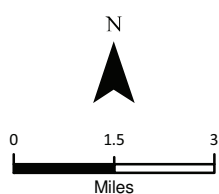
#### Floodplain function and channel migration processes

- High (Restoration Benefit)
- Medium
- Low



SMA Grant Agreement No. G1000058  
 Task 4.01  
 Coordinate System: State Plane NAD1983 (ft)  
 Washington South FIPS 4602

NOTE: Map data shown here are the property of the sources listed below. Inaccuracies may exist, and ESA Adolphson implies no warranties or guarantees regarding any aspect of data depiction.



### Map A-3 Restoration Needs Multi-Species Priorities - Floodplain function and channel migration processes

Data Sources: LCRFRB, 2004 (2008); Clark County, 2009; DNR, 2007; Department of Ecology, 2009; ESRI, 2008



# CLARK COUNTY COALITION SMP UPDATE

BATTLE GROUND | CAMAS | CLARK COUNTY | LA CENTER  
 RIDGEFIELD | VANCOUVER | WASHOUGAL | YACOLT



## Legend

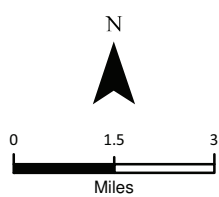
### Multi-Species Priorities

### Riparian Condition and Functions

- High (Restoration Benefit)
- Medium
- Low



SMA Grant Agreement No. G1000058  
 Task 4.01  
 Coordinate System: State Plane NAD1983 (ft)  
 Washington South FIPS 4602  
 NOTE: Map data shown here are the property of the sources listed below. Inaccuracies may exist, and ESA Adolfson implies no warranties or guarantees regarding any aspect of data depiction.



**Map A-4**  
 Restoration Needs  
 Multi-Species Priorities - Riparian  
 Condition and Functions

Data Sources: LCRFRB, 2004 (2008); Clark County, 2009; DNR, 2007; Department of Ecology, 2009; ESRI, 2008



# CLARK COUNTY COALITION SMP UPDATE

BATTLE GROUND | CAMAS | CLARK COUNTY | LA CENTER  
 RIDGEFIELD | VANCOUVER | WASHOUGAL | YACOLT



## Legend

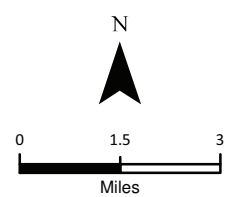
### Multi\_Species Priorities

### Water Quality

- High (Restoration Benefit)
- Medium
- Low



SMA Grant Agreement No. G1000058  
 Task 4.01  
 Coordinate System: State Plane NAD1983 (ft)  
 Washington South FIPS 4602  
 NOTE: Map data shown here are the property of the sources listed below. Inaccuracies may exist, and ESA Adolfson implies no warranties or guarantees regarding any aspect of data depiction.



## Map A-5 Restoration Needs Multi-Species Priorities - Water Quality

Data Sources: LCRFRB, 2004 (2008); Clark County, 2009; DNR, 2007; Department of Ecology, 2009; ESRI, 2008



# CLARK COUNTY COALITION SMP UPDATE

BATTLE GROUND | CAMAS | CLARK COUNTY | LA CENTER  
 RIDGEFIELD | VANCOUVER | WASHOUGAL | YACOLT



## Legend

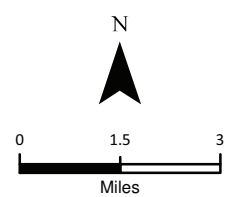
### Multi-Species Priorities

#### Instream Flows

- High (Restoration Benefit)
- Medium
- Low



SMA Grant Agreement No. G1000058  
 Task 4.01  
 Coordinate System: State Plane NAD1983 (ft)  
 Washington South FIPS 4602  
 NOTE: Map data shown here are the property of the sources listed below. Inaccuracies may exist, and ESA Adolfson implies no warranties or guarantees regarding any aspect of data depiction.



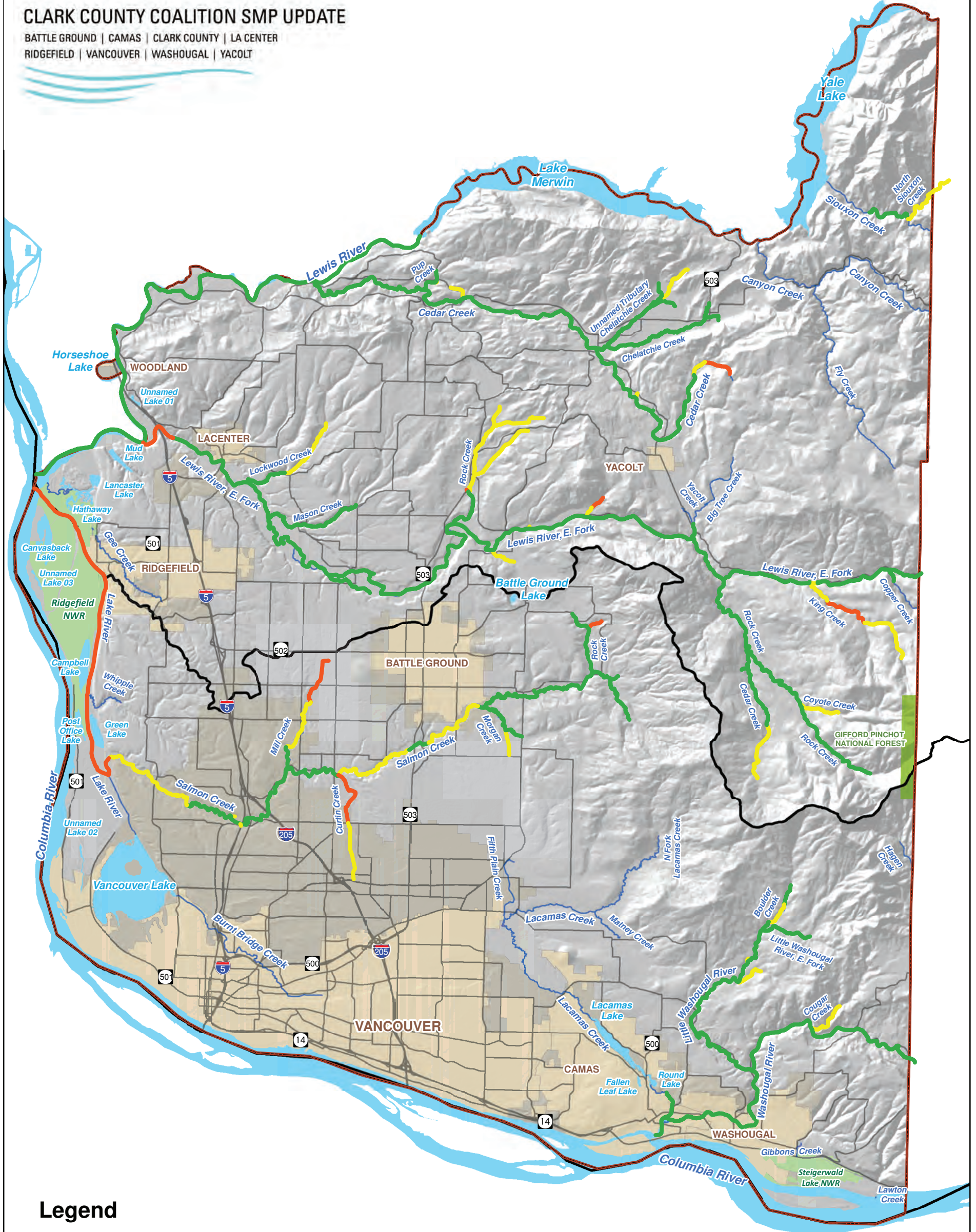
**Map A-6**  
 Restoration Needs  
 Multi-Species Priorities -  
 Instream Flows

Data Sources: LCRFRB, 2004 (2008); Clark County, 2009; DNR, 2007; Department of Ecology, 2009; ESRI, 2008



# CLARK COUNTY COALITION SMP UPDATE

BATTLE GROUND | CAMAS | CLARK COUNTY | LA CENTER  
 RIDGEFIELD | VANCOUVER | WASHOUGAL | YACOLT



## Legend

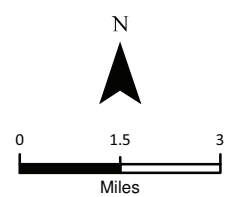
### Multi-Species Priorities

### Watershed Conditions and Hillslope Processes

- High (Restoration Benefit)
- Medium
- Low



SMA Grant Agreement No. G1000058  
 Task 4.01  
 Coordinate System: State Plane NAD1983 (ft)  
 Washington South FIPS 4602  
 NOTE: Map data shown here are the property of the sources listed below. Inaccuracies may exist, and ESA Adolphson implies no warranties or guarantees regarding any aspect of data depiction.



## Map A-7 Restoration Needs Multi-Species Priorities - Watershed Conditions and Hillslope Processes

Data Sources: LCRFRB, 2004 (2008); Clark County, 2009; DNR, 2007; Department of Ecology, 2009; ESRI, 2008