



# NE Hazel Dell Neighborhood Association

Nationally Recognized Newsletter  
By Neighborhoods USA



## Springtime Neighborhood News



### NE Hazel Dell Neighborhood Association is on Facebook

Check out our neighborhood association on Facebook:



<https://www.facebook.com/NEHazelDellNeighborhoodAssociation>

### Newsletter Publication

The NE Hazel Dell Neighborhood Association will publish six issues of the newsletter each year. Here are the issue dates for the newsletter and deadlines for 2023:

Issue	Deadline
1. May/Jun	April 8, 2023
2. Jul/Aug	June 3, 2023
3. Sep/Oct	August 5, 2023
4. Nov/Dec	October 7, 2023

The deadline date is for submitting newsworthy items for publication. Thanks!

### Clark County Washington Website:

<https://www.clark.wa.gov/public-health/novel-coronavirus>



### NEHDNA Meeting Updates

The Northeast Hazel Dell Neighborhood Association will resume in-person meetings starting in March, on the 2<sup>nd</sup> Wednesday of each month! The meetings will be held at the Bud Van Cleve Community Room at Luke Jensen Sports Park. Additional details will be shared via email as we get closer to the March meeting.

### Klineline Kids Fishing Derby

The in-person fishing derby returns this Spring with a 2 day event. Friday April 14th for special needs kids of all ages and Saturday April 15th for kids 5 - 14 years. Registration is required. All entrants must comply with any/all

**Reminder:** View prior newsletters by visiting our neighborhoods county web page at [www.clark.wa.gov/county-manager/ne-hazel-dell](http://www.clark.wa.gov/county-manager/ne-hazel-dell). If you know of a neighbor or friend who would like to be added to the electronic distribution list, please email Bill Cline at [nehdna2021@gmail.com](mailto:nehdna2021@gmail.com)  
*Why be left in the dark, sign up now!*

rules included on the Klineline Kids Fishing (KFN)

website: [www.klineline-kf.org](http://www.klineline-kf.org) The Klineline Kids Fishing non-profit



organization seeks to create the stewards of future fishing by introducing the youth of our community to the joys

and thrills of fishing. Volunteers are greatly appreciated to help run this event.



### Repair Clark County

Why dump that broken household item that just needs a little repair? Repair Clark County, a program through Columbia Spring Environmental Education, will be hosting a free drop-off event on Monday April 4th at the Cascade Park Community Library located at 600 NE 136th Ave. from 6 PM to 7 PM. All items for repair must be preregistered.

Visit [www.repairclarkcounty.org](http://www.repairclarkcounty.org) for more info and to preregister items.

### Green Bag Food Donations

Clark Neighbors Food Project is an innovative, new way to help fight hunger in our community.

One in seven Americans struggle with hunger



in our community. The concept of the Green Bag Food Donation is simple. Every 2 months --- on the 2nd Saturday of every even month --- volunteer coordinators pick up the bags of healthy nonperishable food that neighbors leave outside their front doors. In addition, they leave empty green bags for the next time. Food donations are taken to local food pantries. For more info & to sign-up visit [www.clarkfoodproject.org](http://www.clarkfoodproject.org)

### Clark County Parks

The mission of the CC Parks Department is to strive to preserve, care for and protect our community lands for the use, enjoyment, inspiration and benefits by present & future generations. Within the boundaries of the NE Hazel Dell Neighborhood Association we have five parks covering a total of 58.57 acres. All CC parks are open to the

public. Park rules are spelled out on posted signage and their website [www.clarkwa.gov/publicworks](http://www.clarkwa.gov/publicworks). They request the public's help to report park graffiti, vandalism and/or maintenance concerns ASAP by calling 564-397-2446 or visit the website. If you love your neighborhood community park why not join the county's Adopt-A-Park volunteer program.

### Drop-Off Shred Event

In this day and age we collect many documents with sensitive information. Protect yourself or your business by shredding important documents that are no longer needed. Shredding helps prevent identity theft and frees up valuable space in your home, business, or storage space. Waste Connection is sponsoring this shred event and it is being hosted by the Beautiful Savior Lutheran Church located at 12513 SE Mill Plain Blvd on April 15th from 10 AM to 1 PM. The Church is requesting a \$5 donation to help with their missionary work. There is a limit of 2 boxes per car.

### REAL ID Extension

The Department of Homeland Security (DHS) recently announced that it has extended the REAL ID full enforcement to May 7th, 2025. States will now have additional time to ensure their residents will have valid driver's licenses and identification cards that meet security standards established by the REAL ID ACT. See [www.dhs.gov](http://www.dhs.gov)

### Dog Park Beautification

Volunteers needed for the annual beautification of the IKE Memorial off-leash dog park located at 5167 NE 15th Ave. on Saturday April 15th at 10 AM.



This 10 acre site is the largest of the four Clark County dog parks sponsored DOGPAW a non-profit group. The dog park is located next to the Bonneville Power Administration

(BPA) Ross Substation. Volunteers are requested to bring their own gloves & water as well as gardening tools (shovels, rakes, pitchforks, shears, weed whackers, etc...) Be sure to check in at the volunteer booth. For more info visit [volunteer@dogpawoffleashparks.org](mailto:volunteer@dogpawoffleashparks.org).

### Origins of Phrases / Idioms

Caught red handed - Meaning: Used to indicate that a person has been discovered in or just after the act of doing something wrong or illegal.

Origin: There was an old law stating that if someone butchered an animal



that didn't belong to him, he would only be punished if he was caught with blood on his hands. If one was caught with the meat but his

hands were clean, he would not be punished.

Raining cats and dogs - Meaning: Raining very hard. Origin: In 16th century England, houses had thatched roofs. These roofs were one of the few places where animals were able to get warm. Sometimes, when it would start to rain heavily, roofs would get slippery and cats and dogs would fall off, meaning it looked like was raining cats and dogs!

Blood is thicker than water - Meaning:

Family first. Origins: You probably think this means you should always put family ahead of friends. In fact, it originally may have meant the opposite. The full maxim was "the blood of the covenant is thicker than the water of the womb," with covenant referring to friendship. In other words, it was your friends --- your blood brothers, if you will, --- who were with you through thick and thin.

Don't look a gift horse in the mouth - Meaning: Find fault with something that has been received as a gift or favor. Origin: While buying a horse, people would determine the horse's age and condition based on its teeth, and then decide whether they wanted to buy it or not. The idiom refers to the fact that it's rude to look for flaws in a

thing that was given to you as a gift.

**Genealogy Strategy Classes**

The Clark County Genealogical Society is offering a series of six free one-hour, in-person basic genealogy strategies. Before spring comes around and gardens need tending, awaken the winter doldrums by adding a few ancestor leaves to your family tree. Increasingly, people are getting their DNA tested and looking for answers, say, about that two percent of Basque origins that shows up. But where to start the search? Turn to your local genealogical society for help. Each class will focus on a different topic for digging into the roots of your family tree. All of the teachers are experienced local genealogists who will offer useful hints and practical tips whether one is interested in beginning a search or just wanting to refresh their skills. For more information and to pre-register, stop by CCGS at 3205 NE 52nd Street, Vancouver (check the website for hours: <https://www.ccs-wa.org>) or call CCGS at 360-750-5688.

**Recycling 201 Class**

Free workshop at the Vancouver Community Library! This workshop covers a variety of recycling opportunities beyond the basics of curbside recycling. Discover recycling and reuse options available locally for plastic bags, appliances, bulky items and more! Learn how to identify Household Hazardous Waste (HHW) and then how to safely dispose of this material in Clark County. Saturday March 18<sup>th</sup> from 2-3PM. Must Register in advance on [the City of Vancouver Website](http://the City of Vancouver Website).



**Body Of Facts**

- 1- Children grow faster in the Spring.
- 2- A person uses 17 muscles when they smile and 43 when they frown.
- 3- By the age of 60 most people lose half of their taste buds.
- 4- The rate at which a person's hair grows doubles during an airplane flight.
- 5- If you were locked in a completely sealed room, you would not die due to lack of air, but from carbon dioxide poisoning.
- 6- Statistically, only one person out of two billion reaches the age of 116 years old.
- 7- On average, a person says 4,800 words in 24 hours.
- 8- Our eyes remain the same size as they were at birth, but our nose and ears never stop growing.
- 9- In the morning, a person is about 8 millimeters (0.31 inches) taller than in the evening.
- 10- A cough amounts to an explosive charge of air which moves at speeds up to 60 MPH.
- 11- According to German researchers, the risk of having a heart attack is higher on Mondays than on any other day of the week.
- 12- It is impossible to sneeze with your eyes open.
- 13- Ingrown toenails are hereditary.
- 14- A person would die quicker from a total lack of sleep than from hunger. Death would occur after 10 days without sleep, whereas from hunger it would take several weeks.
- 15- The average person breathes in around 11,000 liters (almost 2906 gallons) of air every day.

**Did You Know**

- 1- The Empire State building has its own zip code as well as 40 other skyscrapers.
- 2- The Los Angeles Coroner's Office has its own quirky gift shop called "Skeletons In The Closet."
- 3- The Library of Congress contains approximately 838 miles of bookshelves --- long enough to stretch

- from Houston to Chicago.
- 4- At 46 letters, Massachusetts's Lake Chargoggagoggmanchauggagoggchau bunagungamaugg has the longest place name in the U.S. (even though it's based on a joke).
- 5- In 1922, a man built a house and all his furniture entirely out of 100,000 newspapers. The structure still stands today in Rockport, Massachusetts.
- 6- The entire Denver International Airport is twice the size of Manhattan.
- 7- A highway in Lancaster, California plays the "William Tell Overture" as you drive over it, thanks to some well-placed grooves in the road.
- 8- The length of Idaho's rivers could stretch across the United states about 40 times.
- 9- The town of Centralia, Pennsylvania has been on fire for 61 years.
- 10- The one-woman town of Monowi, Nebraska is the only officially incorporated municipality with a population of 1. The sole, 80+ year-old, resident is the city's mayor, clerk, treasurer, librarian, and bartender.

Financial Support Needed  
We need your continued financial support more than ever to cover our costs of operating the neighborhood association.

Enclosed is my gift of \$ \_\_\_\_\_

NAME: \_\_\_\_\_  
 ADDRESS: \_\_\_\_\_  
 CITY: \_\_\_\_\_  
 STATE: \_\_\_\_\_ ZIP \_\_\_\_\_  
 PHONE: \_\_\_\_\_  
 E-MAIL: \_\_\_\_\_

**Please mail this form with your donation to:  
NE Hazel Dell Neighborhood Association,  
2520 NE 88th Street  
Vancouver, WA 98665**



**NE Hazel Dell Neighborhood Association**  
**3109 NE 96<sup>th</sup> Street**  
**Vancouver, WA 98665**

**PRESORT  
STANDARD  
US POSTAGE  
PAID**

**NE Hazel Dell  
Neighborhood Association  
Officers and Board Members**

Bill Cline, President  
[nehdna2021@gmail.com](mailto:nehdna2021@gmail.com)

Vicki Fitzsimmons, Secretary  
[Vicki.Fitzsimmons@edwardjones.com](mailto:Vicki.Fitzsimmons@edwardjones.com)

Chadd Logue  
[chaddlogue@gmail.com](mailto:chaddlogue@gmail.com)

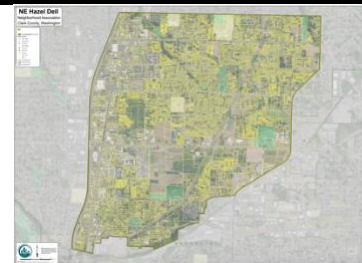
Bill Drummond  
[wcdrummond@comcast.net](mailto:wcdrummond@comcast.net)

**Newsletter Editors**  
Diana & Chadd Logue  
[chaddlogue@gmail.com](mailto:chaddlogue@gmail.com)  
Bill Drummond  
[wcdrummond@comcast.net](mailto:wcdrummond@comcast.net)

**Neighborhood Association  
Mission:**

The residents of the Hazel Dell area established the NE Hazel Dell Neighborhood Association (NEHDNA) in order to unite the common interests and promote the welfare of the area. The association is involved with a variety of matters, which affect the livability of the neighborhood and community in general.

All residents within the neighborhood association boundaries or neighboring areas not within an existing neighborhood association are welcome to attend and participate in the association.



If you have any questions or would like more information, please contact one of the officers or board members listed on this page. The NEHDNA does not subscribe to any religious affiliation or political party. Our desire is to work together for the common good of the neighborhood in which we all live. You don't have to live in the area to be a member or to come to the meetings! All are welcome.

*Neighborhood Association newsletters are copied free of charge by the Clark County Neighborhood Outreach Office. The information and views expressed are solely those of the NE Hazel Dell Neighborhood Association and not Clark County Government or their employees.*