



# Arterial Atlas Amendments

2016 Comprehensive Plan Update



# Categories of amendments



- **Remove** from arterial atlas
- **Add** to arterial atlas
- **Revise** arterial atlas



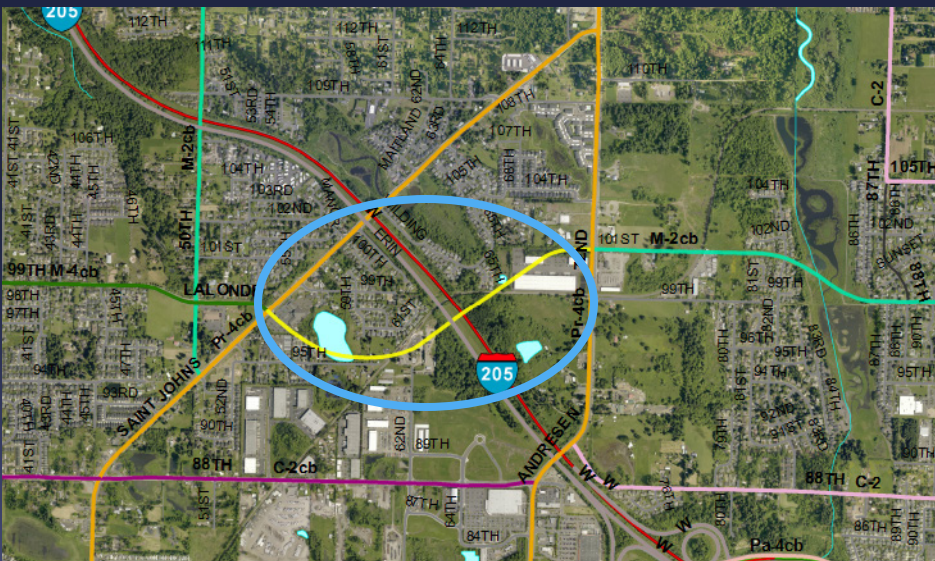
REMOVE

# 99<sup>th</sup> St. Extension

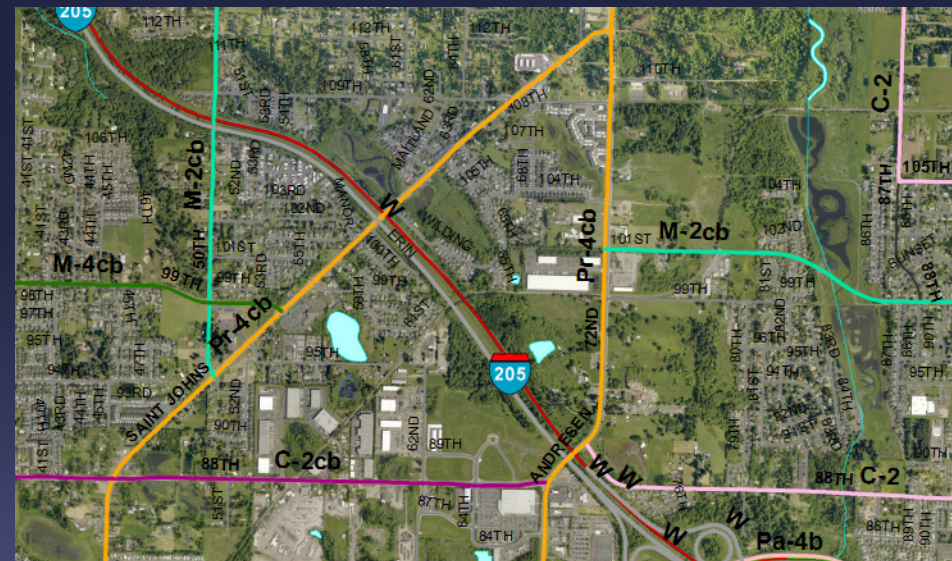
NE 72<sup>nd</sup> Ave to St. Johns Rd

**Reason for removal:** The road is not feasible due to environmental constraints and development in the area.

**BEFORE (NOW)**



**AFTER (RECOMMENDED)**



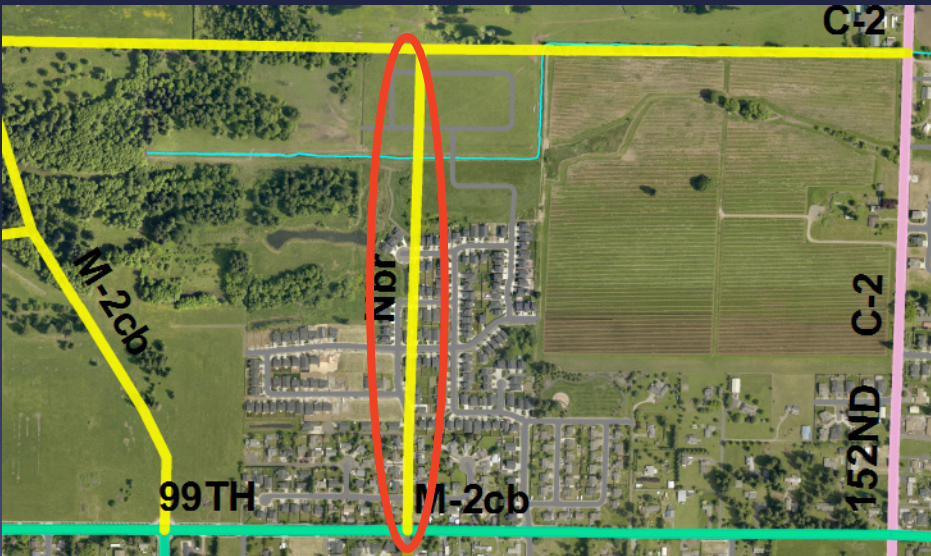


# NE 142<sup>nd</sup> Ave Extension

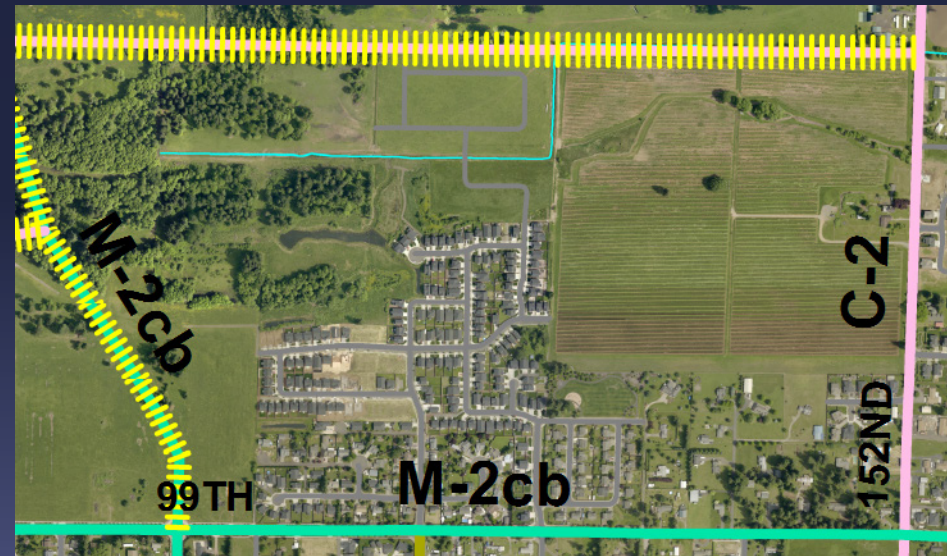
NE 99<sup>th</sup> St. to Proposed NE 110<sup>th</sup> St

**Reason for removal:** The road is not feasible due to development in the area.

**BEFORE (NOW)**

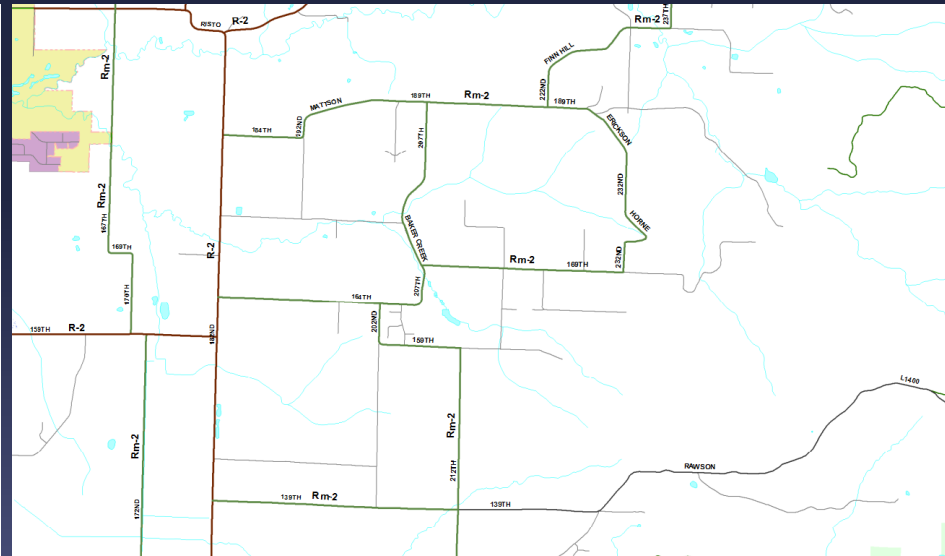


**AFTER (RECOMMENDED)**



NE 159<sup>th</sup> St. to NE 207<sup>th</sup> Ave

## BEFORE (NOW)

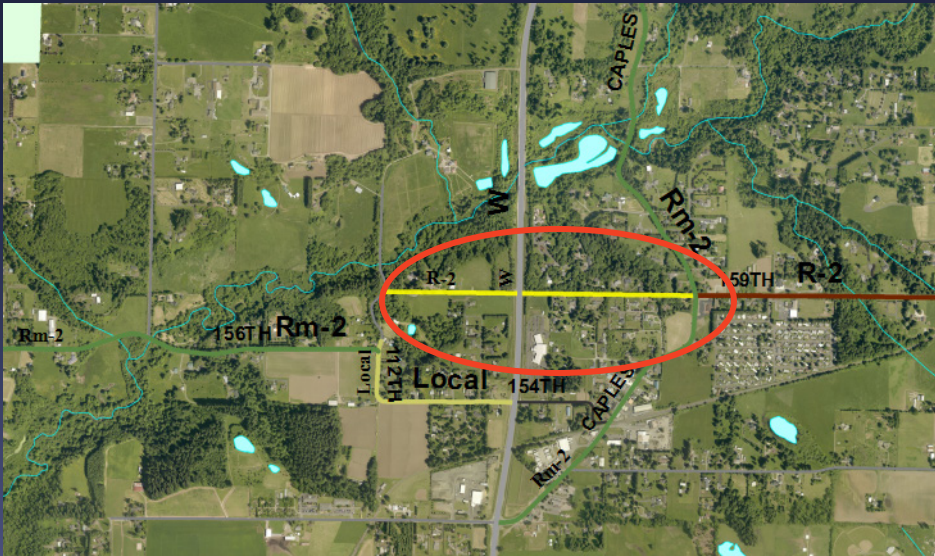


# NE 159<sup>th</sup> St. Extension

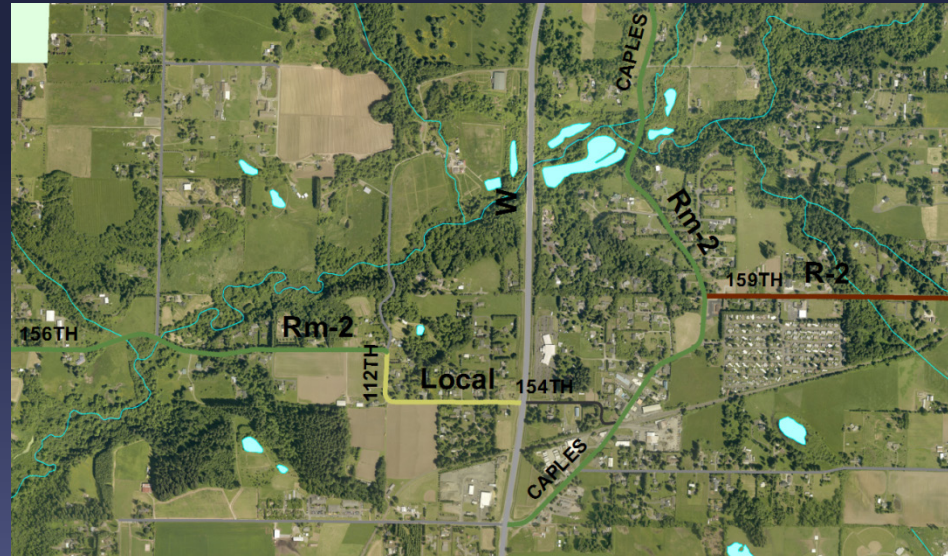
Caples Rd. to NE 112<sup>th</sup> Ave

**Reason for removal:** The road is not feasible due to environmental issues and it does not facilitate a significant amount of trips in terms of circulation.

## BEFORE (NOW)



## AFTER (RECOMMENDED)



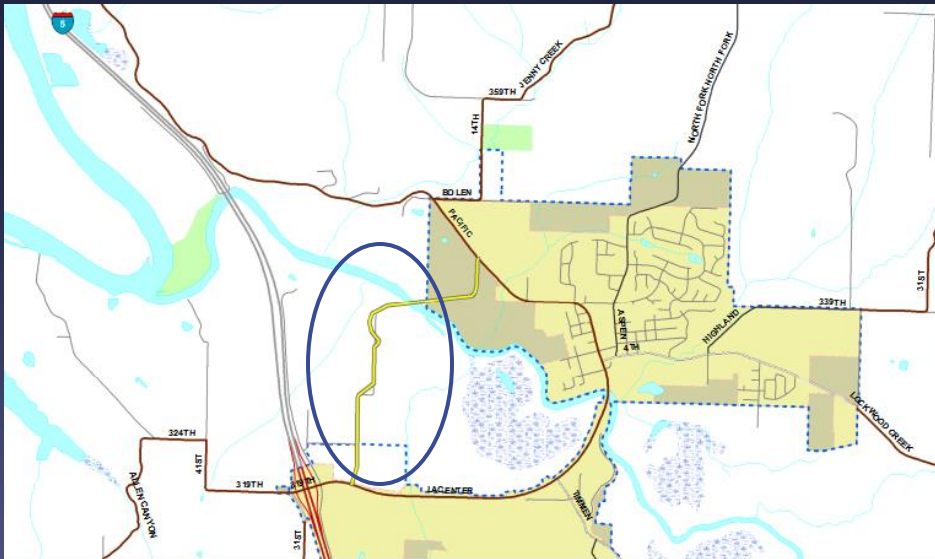


# La Center UGB & Bridge

Proposed NW 26<sup>th</sup> Ave./NW 329<sup>th</sup> St./NW 24<sup>th</sup> Ave/NW Larsen Dr.:  
NW La Center Rd. to Pacific Hwy

**Reason for removal:** This is a request from the City of La Center.

## BEFORE (NOW)



## AFTER (RECOMMENDED)







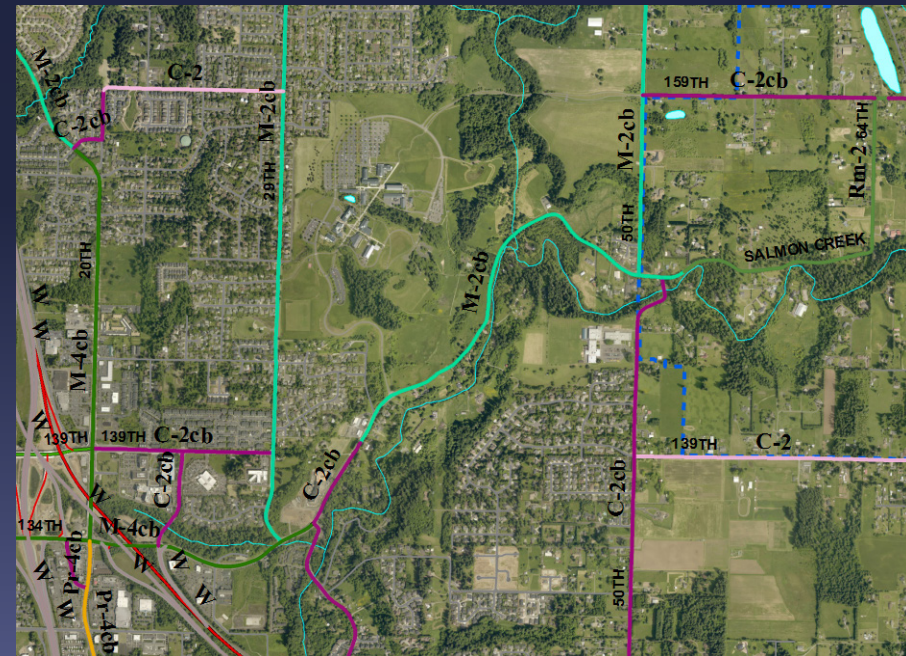
ADDITION

# Salmon Creek Avenue

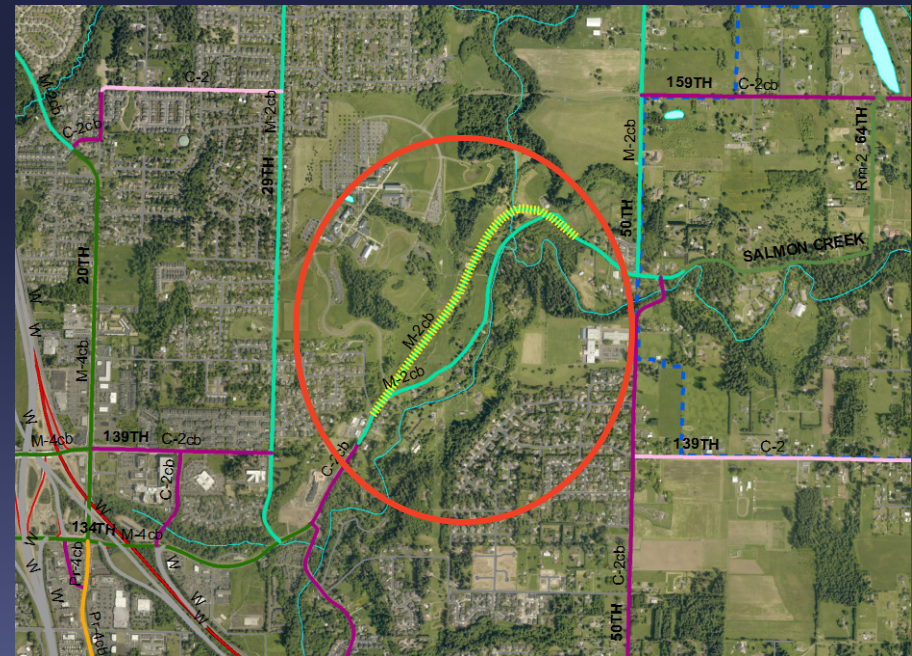
West of NE 50<sup>th</sup> Ave to Washington State University Entrance (M-2cb)

**Reason for addition:** The existing alignment of Salmon Creek Avenue is being eroded slowly by Salmon Creek. The road project will move the road away from the creek.

**BEFORE (NOW)**

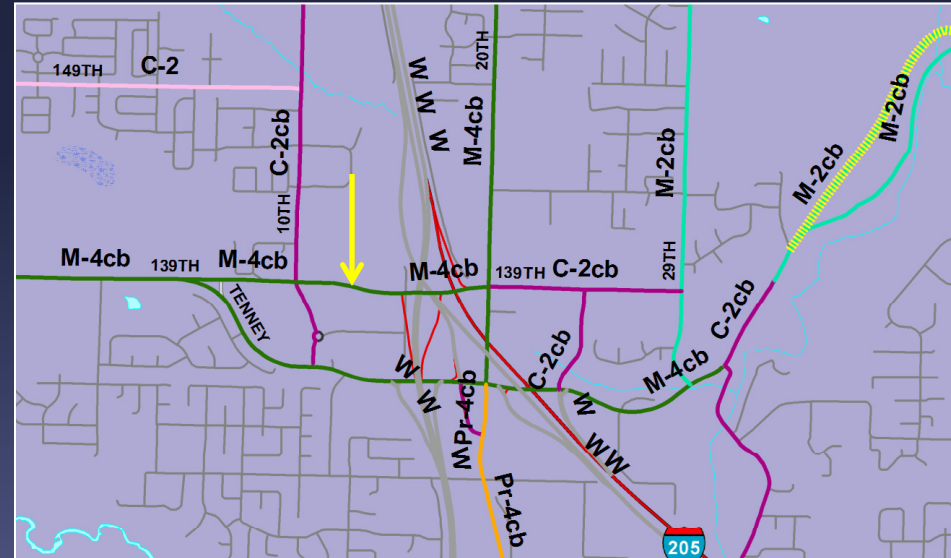


**AFTER (RECOMMENDED)**



--	--

## BEFORE (NOW)





# REVISIONS

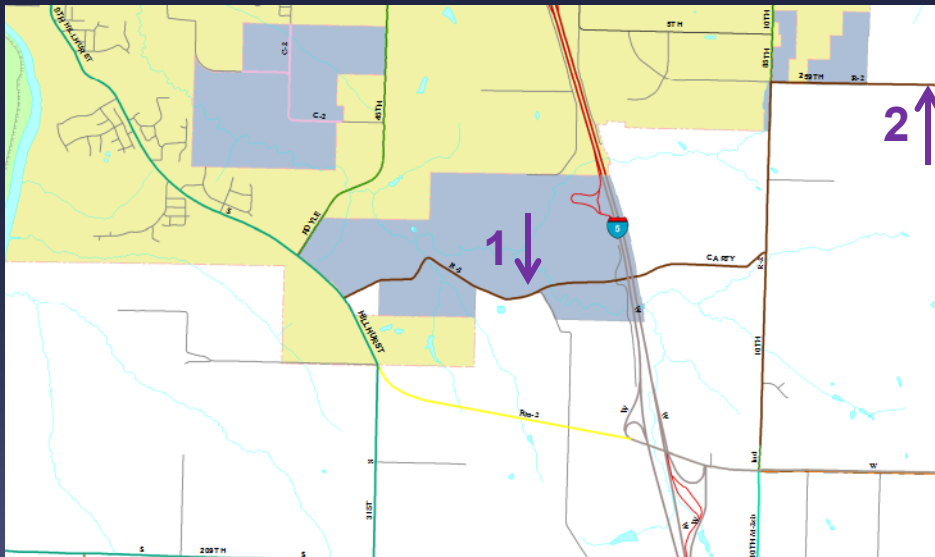


# Rural Classifications inside Urban Growth Boundary - Ridgefield

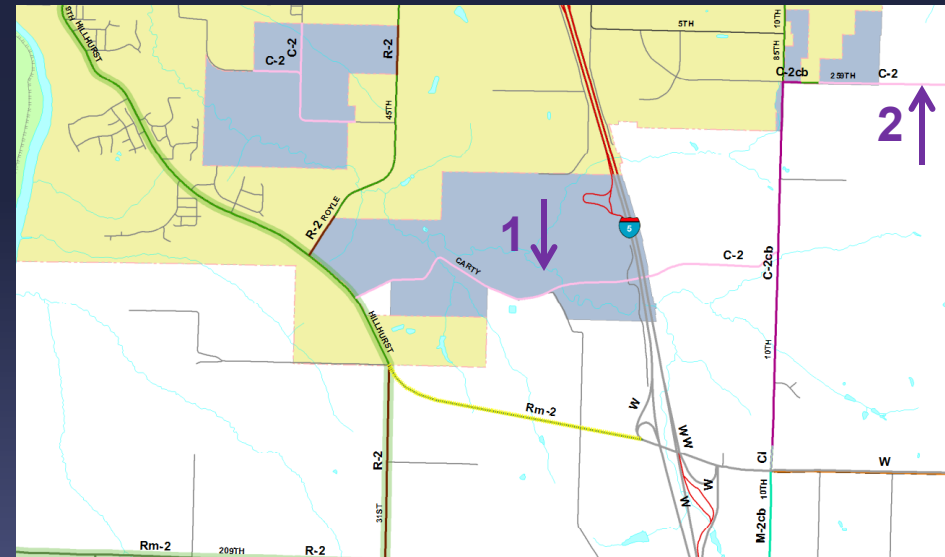
## Reason for revision: Upgrade to urban classification

1. Carty Rd.: NE 10<sup>th</sup> Ave to Hillhurst Rd. Ridgefield (R-2 to C-2 Classification)
2. NE 259<sup>th</sup> St.: NW 20<sup>th</sup> Ave. to NE 102 Ave. (Rm-2 to C-2 Classification)-

### BEFORE (NOW)



### AFTER (RECOMMENDED)



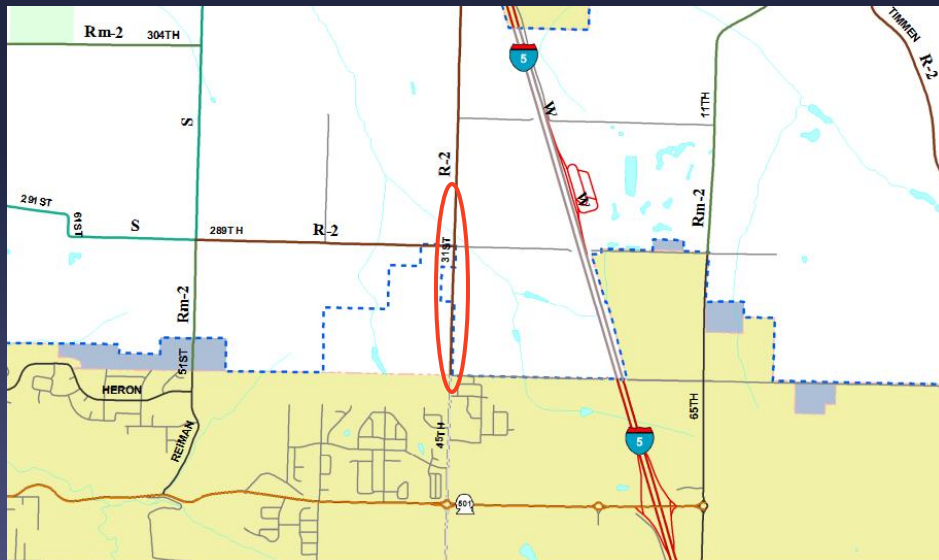
--	--

# New Urban Growth Boundaries- Ridgefield

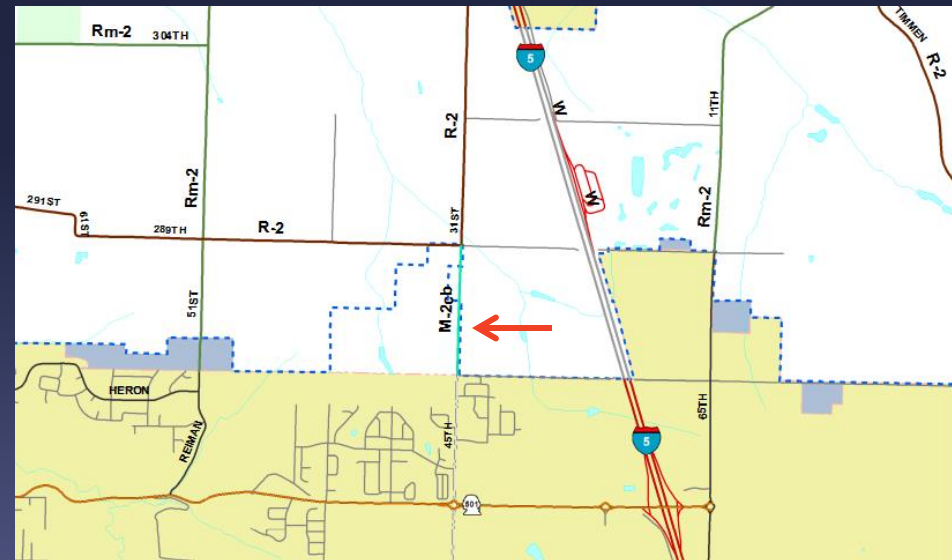
**Reason for revision:** To change the road classification from rural to urban for new urban growth boundaries.

NW 45<sup>th</sup> Ave: Ridgefield City Limits to NW 289<sup>th</sup> St.(R-2 to M-2cb Classification)

**BEFORE (NOW)**



**AFTER (RECOMMENDED)**



--	--



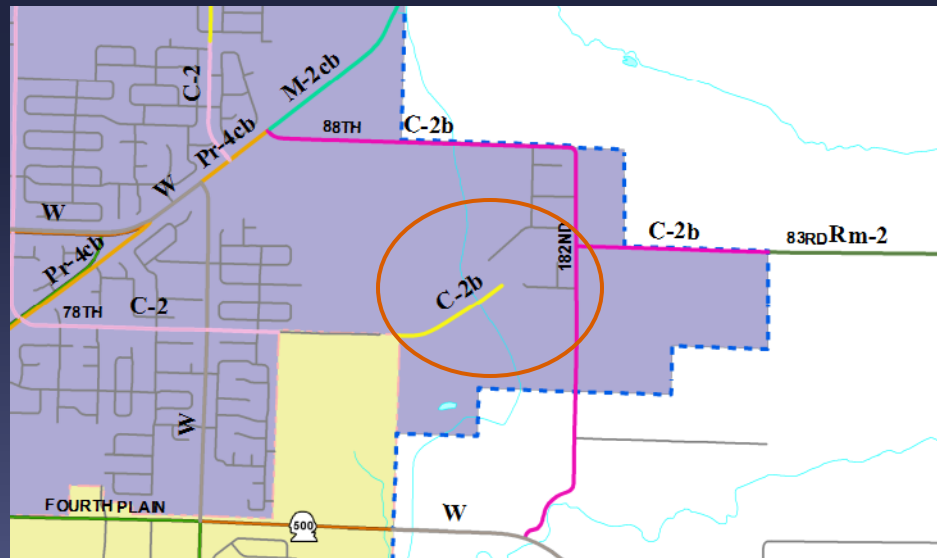


# Fifth Plain Creek

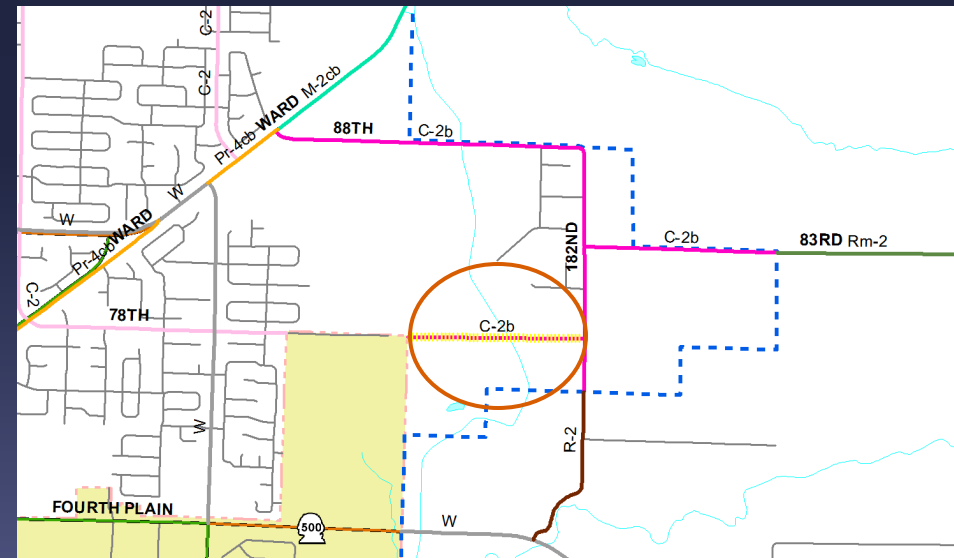
Proposed NE 78<sup>th</sup> St.: Vancouver City Limits to NE 182<sup>nd</sup> Ave (Realign to connect directly to 182<sup>nd</sup> Ave)

**Reason for revision:** To realign to connect directly to 182nd, per development application.

## BEFORE (NOW)



## AFTER (RECOMMENDED)



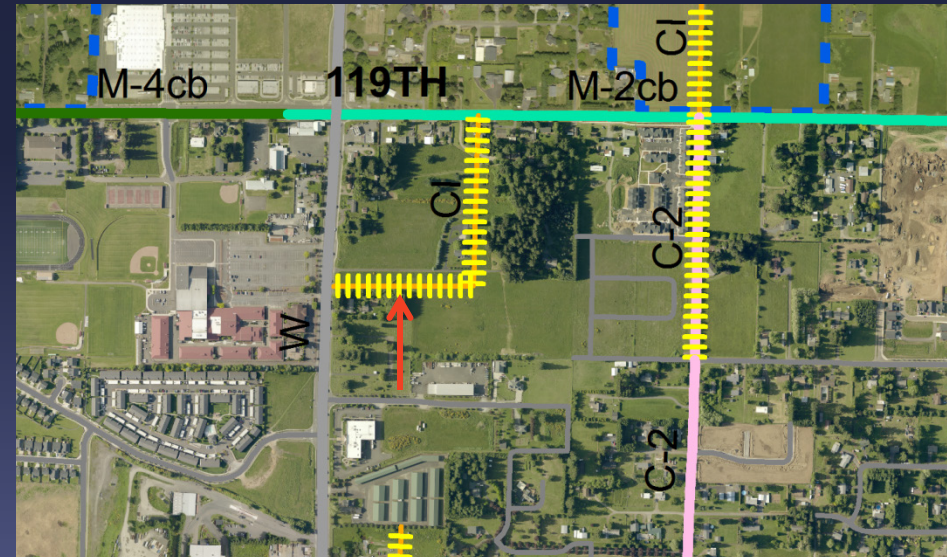
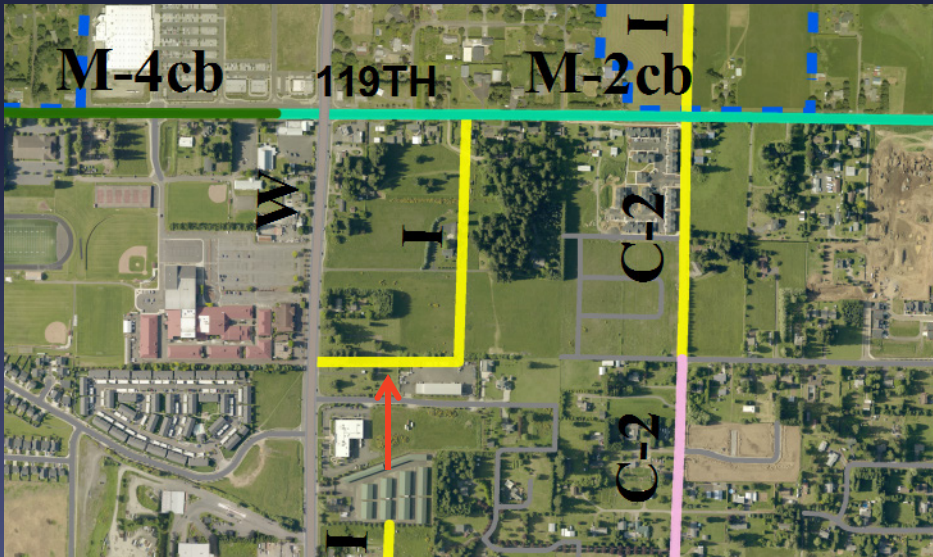
# NE 119<sup>th</sup> St. & SR-503

Proposed NE 114<sup>th</sup> St.: Proposed NE 120<sup>th</sup> Ave to NE 117<sup>th</sup> St./SR-503  
(Realign to NE 116<sup>th</sup> St., north of the Brush Prairie Cemetery)

**Reason for revision:** The current alignment runs through an existing cemetery. The new alignment would avoid the cemetery.

**BEFORE (NOW)**

**AFTER (RECOMMENDED)**

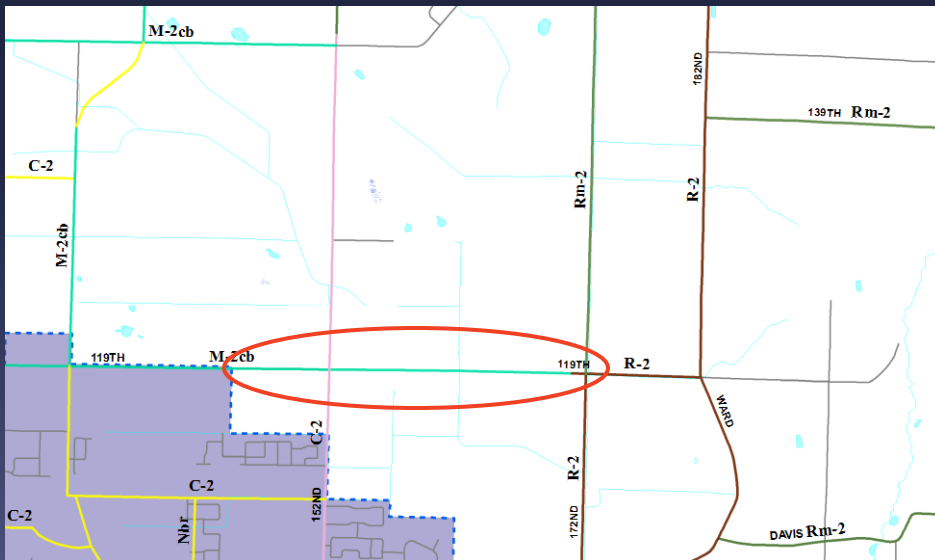


# NE 119<sup>th</sup> St & NE 172<sup>nd</sup> Ave

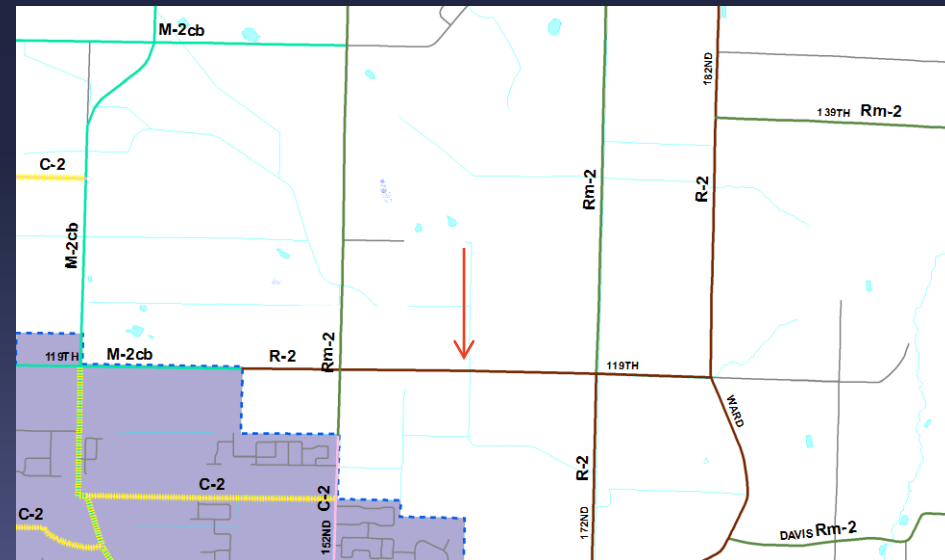
Intersection to Vancouver Urban Growth Boundary (M-2cb to R-2 Classification)

**Reason for revision:** Change the classification from M-2cb (an urban classification) to R-2 (a rural classification) because it is outside the Urban Growth Boundary.

## BEFORE (NOW)



## AFTER (RECOMMENDED)



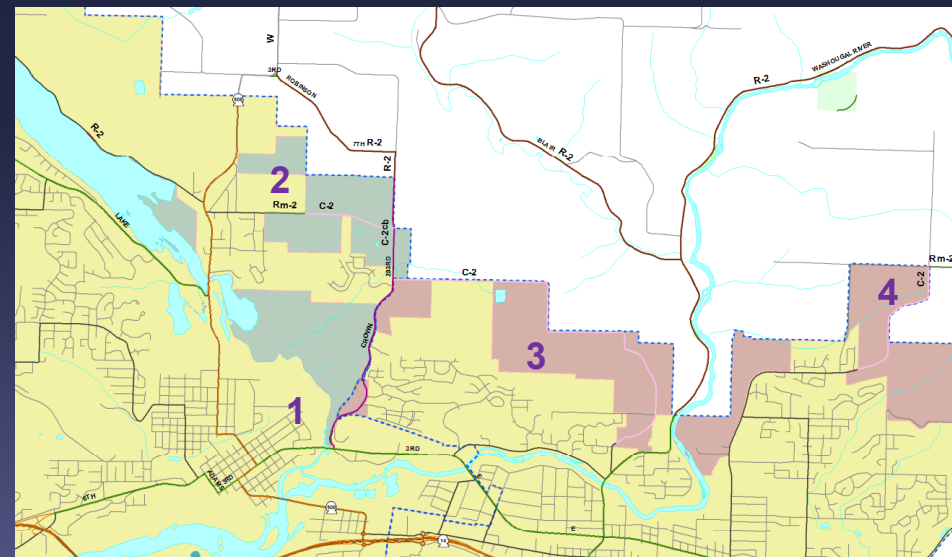
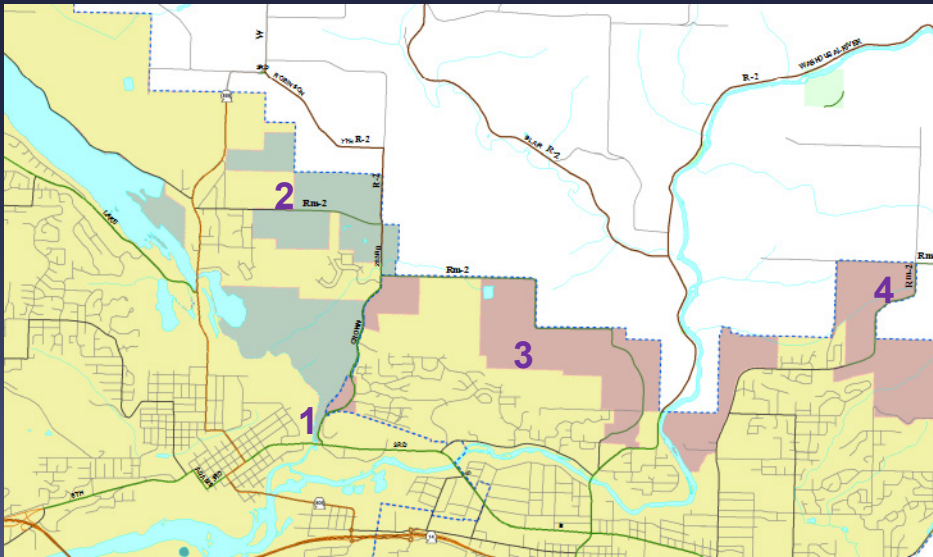
# Camas and Washougal UGB

**Reason for revision:** Upgrade to urban standards inside UGB

1. Crown Rd.: Washougal City Limits at Province Dr. to north terminus of Camas Urban Growth Boundary (R-2 to C-2cb classification)
2. NE 43<sup>rd</sup> Ave./Nourse Rd.: Camas High School entrance to NE 283<sup>rd</sup> Ave (Rm-2 to C-2 classification) Upgrade to urban standards inside UGB
3. NE 23<sup>rd</sup> Ave./NE 303<sup>rd</sup> Rd./30th St./313<sup>th</sup> Ave./Woodburn Rd.: Washougal City Limits to NE 283<sup>rd</sup> Ave (Rm-2 to C-2 Classification) Upgrade to urban standards inside UGB
4. SE Lawton Rd./SE 347<sup>th</sup> Ave./SE Jennings Rd. SE 352<sup>nd</sup> Ave.: Washougal City Limits to SE 20<sup>th</sup> St. (RM-2 to C-2 Classification)

## BEFORE (NOW)

## AFTER (RECOMMENDED)



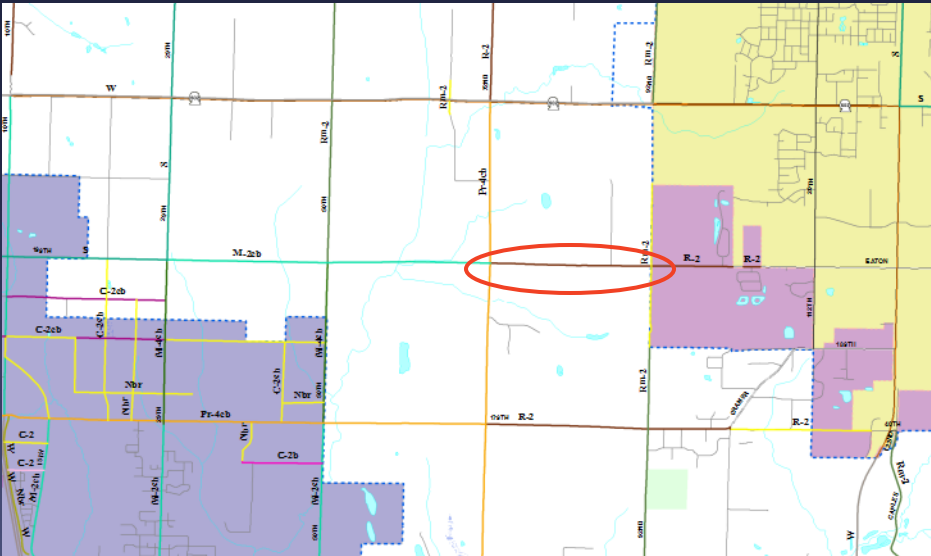


# NE 199<sup>th</sup> St.

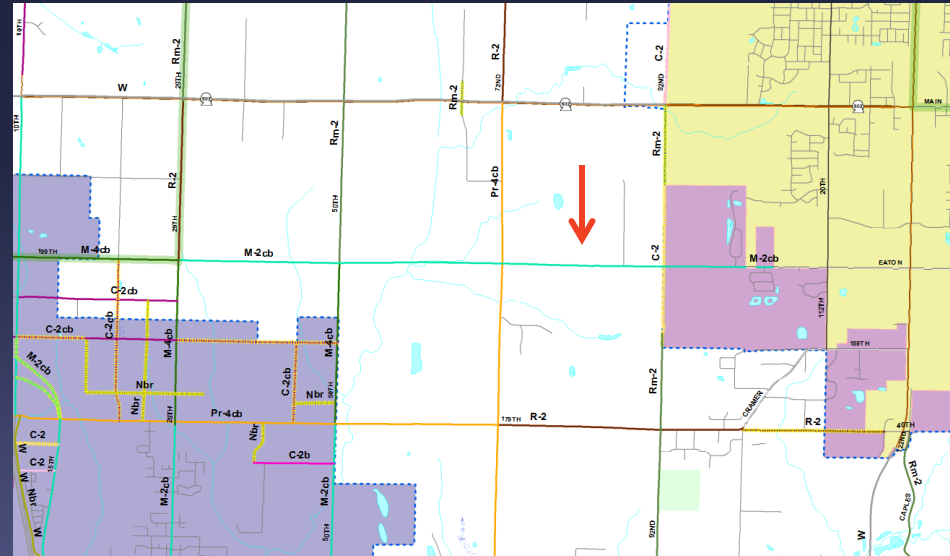
NE 72<sup>nd</sup> Ave to Battle Ground City Limit near 26<sup>th</sup> St. (R-2 to M-2cb)

**Reason for revision:** Upgrade to Urban standards connecting two UGBs

**BEFORE (NOW)**



**AFTER (RECOMMENDED)**



# Questions



Matt Hermen

Planner III

(360)397-2280 X4343

[Matt.Hermen@clark.wa.gov](mailto:Matt.Hermen@clark.wa.gov)

