

# PROEBSTEL

## Neighborhood Association



**Federal, state and county officials have said the Central Impact Target Area at Camp Bonneville will never be open to the public due to the danger of unexploded ordnance.**

## County appoints Camp Bonneville advisory group

### New citizen panel toured grounds in late November

Clark County has formed a Camp Bonneville advisory panel to offer comment regarding the safety and future of the former 3,840-acre U.S. Army training facility and firing range.

An hour-long introductory meeting was held in late August and the members toured the camp in late November.

The Army owned and operated the camp from 1909 to 1985. It was transferred to Clark County in 2006 via a federal conservation conveyance.

The camp is in the boundaries of the Proebstel Neighborhood Association.

The camp has been closed to the public for decades.

More than \$70 million have been spent to clean up unexploded munitions, groundwater and other environmental hazards.

The seven members of the group are:

- Ann Palkovich Shaw, a retired college professor with extensive archeological field work. She has a doctorate degree in archaeology.

- Greg Shaw, a retired federal government employee. The Shaws own 28 acres contiguous to Camp Bonneville on the east side.

- Stephen Jones, a land owner adjacent to Camp Bonneville. Jones is a local businessman.

- Tom Dennison, a sergeant and Clark County Sheriff's Office employee since 1999.

- Mary Lennox, a resident near Camp Bonneville since 2004 who previously lived adjacent to Camp Withycombe, an Oregon National Guard facility in Oregon. She is retired from IBM.

- Michael Conway, an engineering project manager who lives just west of Camp Bonneville.

- Allen Thomas, a retired newspaper natural resources reporter and page designer who also lives west of the camp.

The advisory group meetings are open to the public and available online. Announcements of meetings can be found on Clark County's Camp Bonneville web page.

## Neighborhood association to meet on Dec. 12

### County's next growth plan to be discussed

Clark County's upcoming Comprehensive Growth Management Plan update will be explained when the Proebstel Neighborhood Association meets on Dec. 12.

The group's third meeting of 2023 will begin at 6:30 p.m. at Proebstel Church, 18702 N.E. Fourth Plain Blvd.

Jose Alvarez of the Clark County Department of Community Planning will be the guest speaker.

The meeting also will include a report from the county sheriffs office and neighborhood emergency preparedness.

The Zoom link for the meeting is <https://bit.ly/ProebstelNHA-12-12-2023>.

# State adds Jones Creek parcel to Yacolt forest

## Most of the 640-acre acquisition was burned in the Nakia Creek Fire of October 2022

A 640-acre parcel of forest on Larch Mountain has been purchased by the state Board of Natural Resources for addition to the Yacolt Burn State Forest.

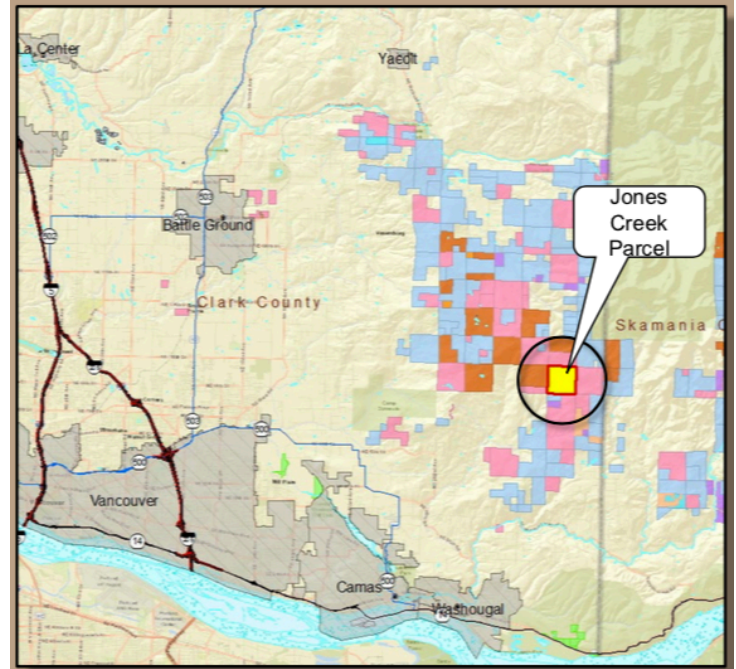
The state paid \$855,000 for the property. About 75 percent of the property was burned during the Nakia Creek Fire in October 2022. DNR plans to spend \$115,000 reforesting the burned-over portions of the property.

The Nakia Creek Fire burned 1,918 acres in Clark County.

“This purchase is an investment that protects this area from development and an important step to keep working forests working in Southwest Washington,” said Commissioner of Public Lands Hilary Franz.

The land was an inholding within the Larch Block, the westernmost portion of the Yacolt Burn State Forest.

The parcel will be put into DNR’s Land Bank, where it will be held until it is designated to support a specific trust. The land bank essentially is a holding category for desirable properties acquired by DNR waiting to become trust lands and former trust lands waiting to be sold.



# Camas gets grant for Green Mountain purchase

## Fifty-five acres on former volcanic cone are contiguous to PNA’s southern boundary

A 55-acre parcel of forest uplands, including the Green Mountain volcanic cone, will be acquired by the City of Camas to be included in a conservation greenbelt.

The land is contiguous to a portion of the Proebstel Neighborhood Association’s south border.

**“and has the potential to connect regionally to Camp Bonneville and to the Lake-to-lake future trails system.”**

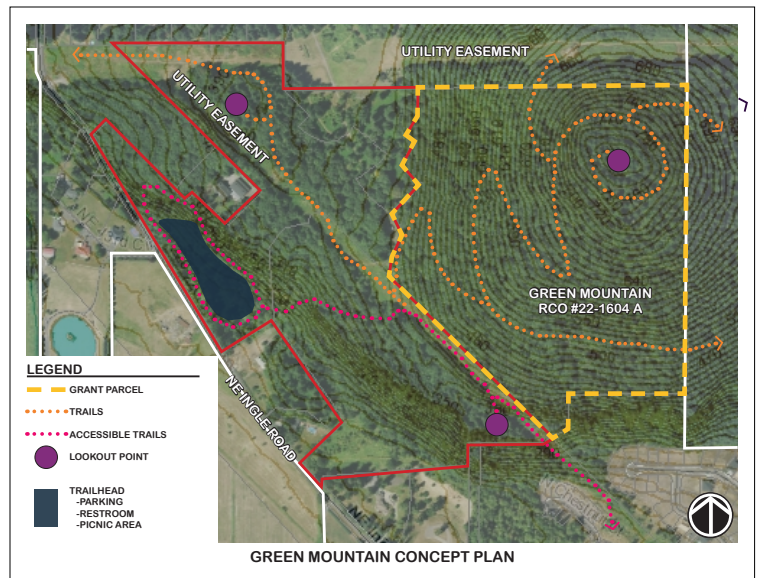
— Washington Recreation Conservation Office

facilities, trails and viewpoints,” according to the RCO’s announcement of the grant award.

“These features will be an integral part of the city’s trail network system that connects to the Lacamas Lake trail system, and has the potential to connect regionally to Camp

Washington’s Recreation Conservation Office announced in late July it will award a state grant of \$1.25 million to be paired with \$2.6 million from Camas to acquire the land.

“Future development is anticipated to include such things as trailheads and parking, picnic



Bonneville, and to the Lake-to-Lake future trails system,” RCO said.

Green Mountain rises to 804 feet in elevation. The 55-acre parcel includes “opportunities for scenic viewpoints which affords outstanding views of the surrounding landscape including a vista to Mount Hood,” the Recreation Conservation Office said.

# Coalition drafts “vision plan” for Silver Star Mountain trails

## Document makes suggestions to improve the scenic peak’s trail network

A “vision plan” for Silver Star Mountain in the Gifford Pinchot National Forest just northeast of the Proebstel Neighborhood Association has been completed by a working group of government land agencies and nonprofit trail advocacy organizations.

The plan can be viewed online at [silver\\_star\\_vision\\_plan\\_20230630.pdf](#)

Silver Star is in the far southwest corner of the Gifford Pinchot forest and bordered by Washington Department of Natural Resources land on the west, south and east plus private land to the south.

Silver Star is a ridge connecting Silver Star Mountain, Little Baldy and



## Hikers get a 360-degree view from the summit of Silver Star Mountain.

Bluff Mountain. Ridges and peak in the area are steep with many rocky outcrops, bluffs, talus slopes and waterfalls.

Its open meadows and rocky slopes provide an alpine environment

at a relatively low 4,000 feet of elevation.

The Forest Service, in its 1990 management plan, designated the ridge and associated valleys as a Special Interest Area. Motorized vehicles are not allowed.

Silver Star has 11.7 miles of trail or closed road re-purposed as trail.

The 33-page vision plan makes recommendations where new trails could be considered to improve the overall trail network and reduce congestion and negative impacts.

The document divides Silver Star into three areas with recommendations for each.

However, any specific new trail building will require additional study to follow state and federal requirements for environmental analysis and public comment.

## Neighborhood notes

### No round-about coming at Fourth Plain Road, NE 199th Avenue

Rumors of a roundabout coming on state Highway 500 at Northeast 199th Street are unfounded, the Washington State Department of Transportation says.

“There is no funded project that we know of to put in a roundabout at that intersection,” said Kelly Hanahan of the WSDOT office in Southwest Washington.

“Our surveyors went out several years ago (our project team thinks it was prior to the pandemic) when the WSDOT Traffic Office asked us to look at a concept there,” she added.

### Subdivision proposed at NE 212th, NE119th

A five-lot subdivision is being planned at the northeast corner of the intersection of Northeast 212th Avenue and Northeast 119th Street.

According to documents from the

Clark County Department of Community Development, the applicant is the Nylund Revocable Living Trust, 19816 N.E. Larkin Road, Battle Ground.

### Who we are...

**Boundaries** – The association is part of the Clark County neighborhood program. The boundaries are quite expansive and include much more than Proebstel. Livingston Mountain, Green Mountain Camp Bonneville and

Northeast Rawson Road are in the boundaries. There are 3,053 households within the boundaries.

**Meetings** – The group meets intermittently at Proebstel Church, 18702 NE Fourth Plain Road. Meetings are announced via email and on the county’s web site.

### Email address:

[proebstel.na2@gmail.com](mailto:proebstel.na2@gmail.com)

**Website:** <https://clark.wa.gov/county-manager/proebstel>

**Board members** – Kirk VanGelder, president; Jared Lester, vice president; Ann Shaw, secretary; Wendy McCullough, Allen Thomas, at-large.