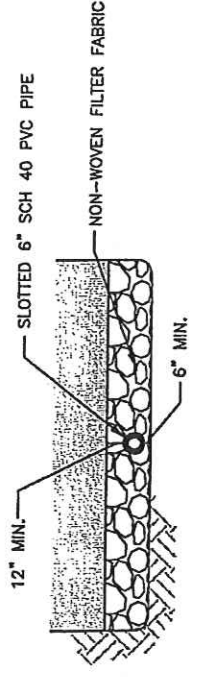
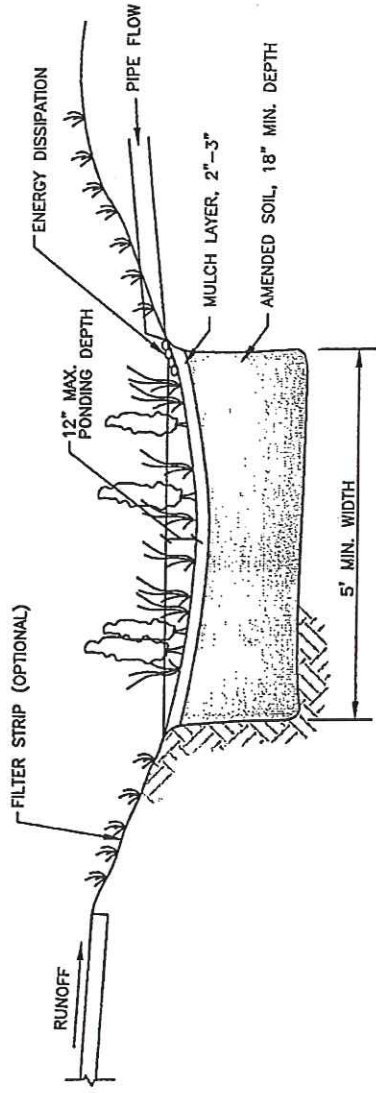




APPENDIX **A**



Low Impact Development Details



OPTIONAL UNDER DRAIN FOR POORLY DRAINED SOILS, SEE NOTE 3

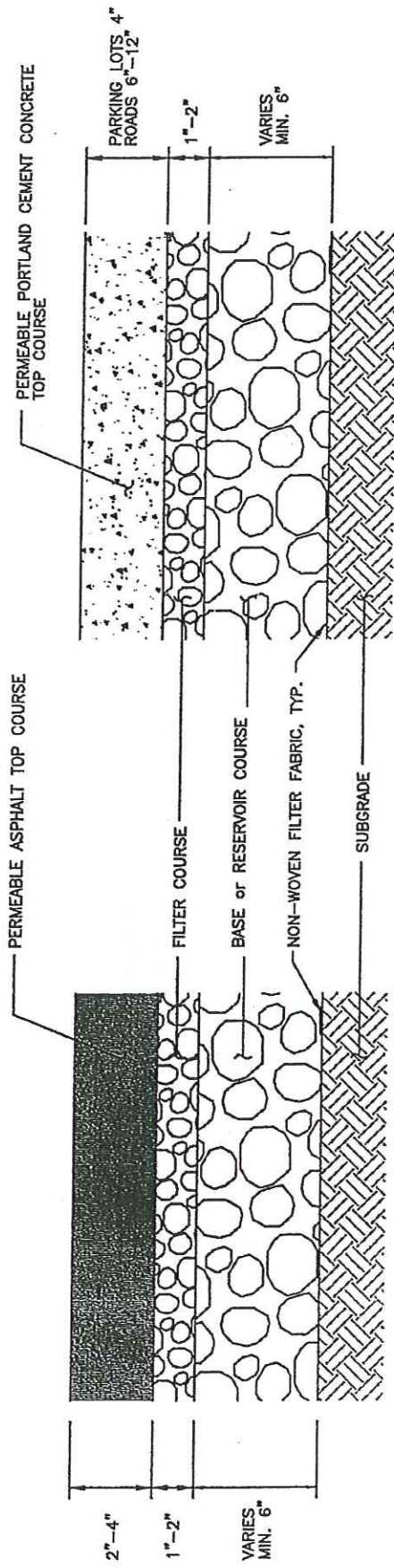
NOTES:

1. SIDE SLOPE WITHIN BIORETENTION AREA SHALL BE NO STEEPER THAN 3 HORIZONTAL TO 1 VERTICAL.
2. PROVIDE OVERFLOW FOR PONDING EXCEEDING 6 INCHES.
3. UNDER DRAIN MAY BE REQUIRED. SEE LID MANUAL FOR UNDER DRAIN CRITERIA.
4. SEE LID MANUAL FOR PLANTING REQUIREMENTS.

ADAPTED FROM PSAT

DRAFT RAIN GARDEN

NOT FOR CONSTRUCTION



ASPHALT

PORTLAND CEMENT CONCRETE

NOTES:

1. 5% MAXIMUM SLOPE FOR POROUS PAVEMENT.
2. MIX DESIGN FOR POROUS ASPHALT AND POROUS CONCRETE SHALL BE SUBMITTED TO THE COUNTY FOR APPROVAL.

ADAPTED FROM PSAT

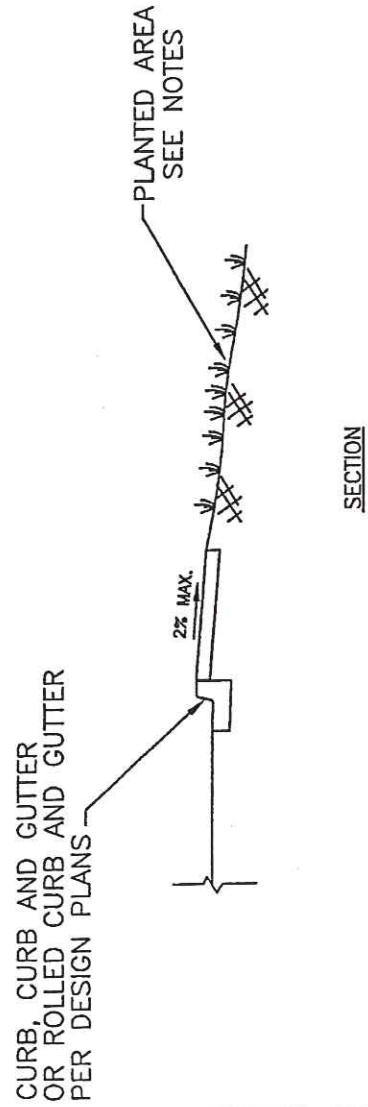
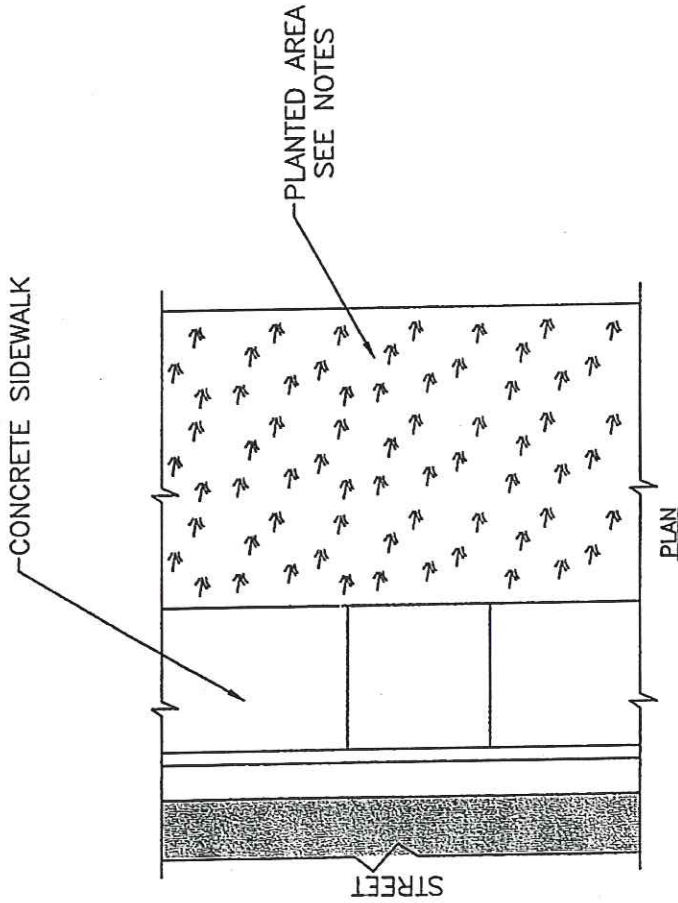
DRAFT POROUS PAVEMENT

NOT FOR CONSTRUCTION

NOTES

UNDISTURBED NATIVE SOIL WITH WELL ESTABLISHED NATIVE VEGETATION, OR ADDITIONAL LID BMP FACILITY, OR PLANTED SOIL AMENDMENTS. SOIL AMENDMENTS NECESSARY IF ONSITE SOILS ARE POORLY DRAINED OR IF NATIVE SOILS ARE DISTURBED IN A MANNER THAT REDUCES INFILTRATION RATES.

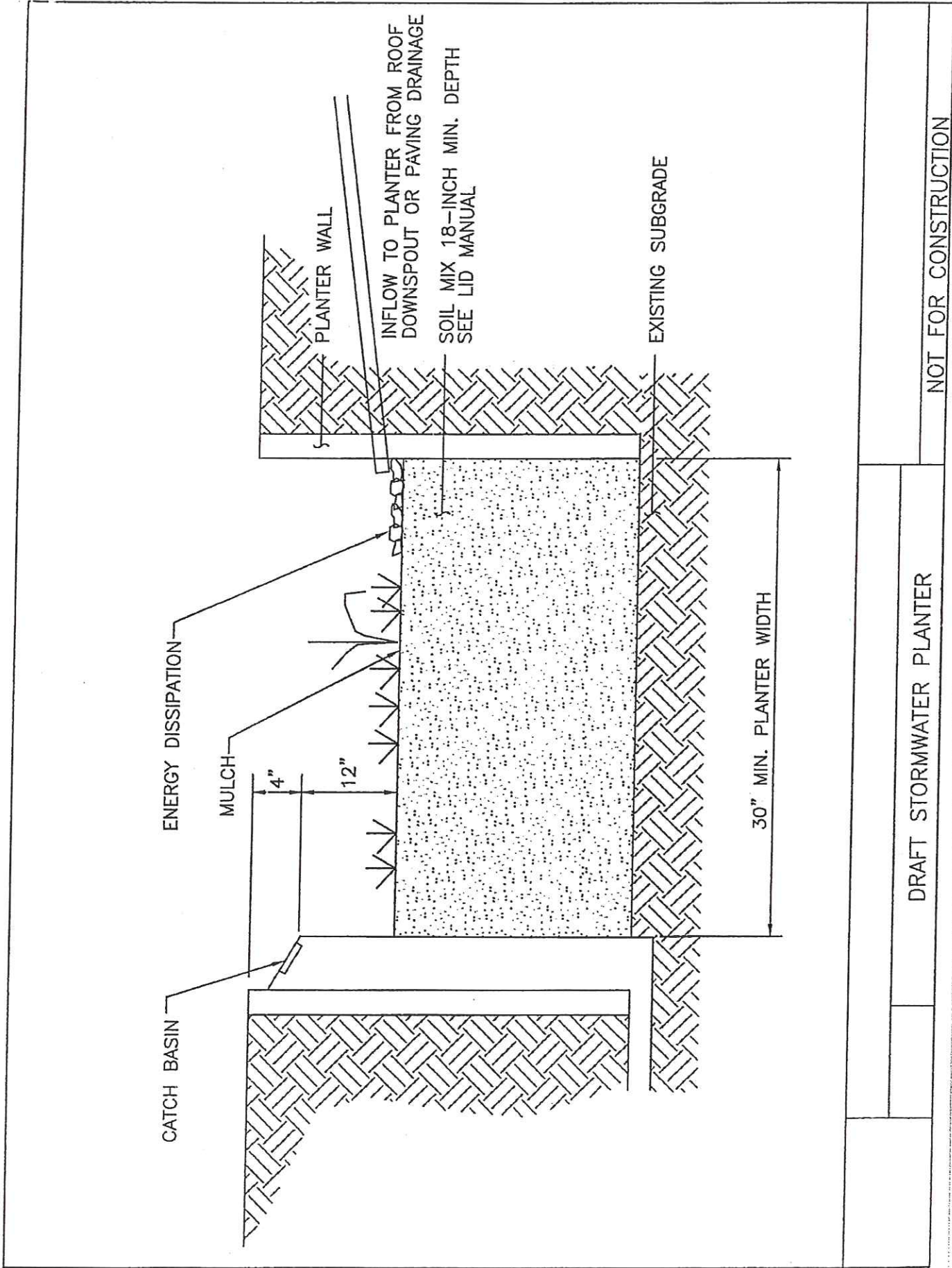
IF PLANTING AMENDED SOILS THE FOLLOWING SEED MIX SHALL BE USED:
40% TURF-TYPE RYE
40% FESCUE
10% WHITE DUTCH CLOVER
10% COLONIAL BENTGRASS



ADAPTED FROM PSAT

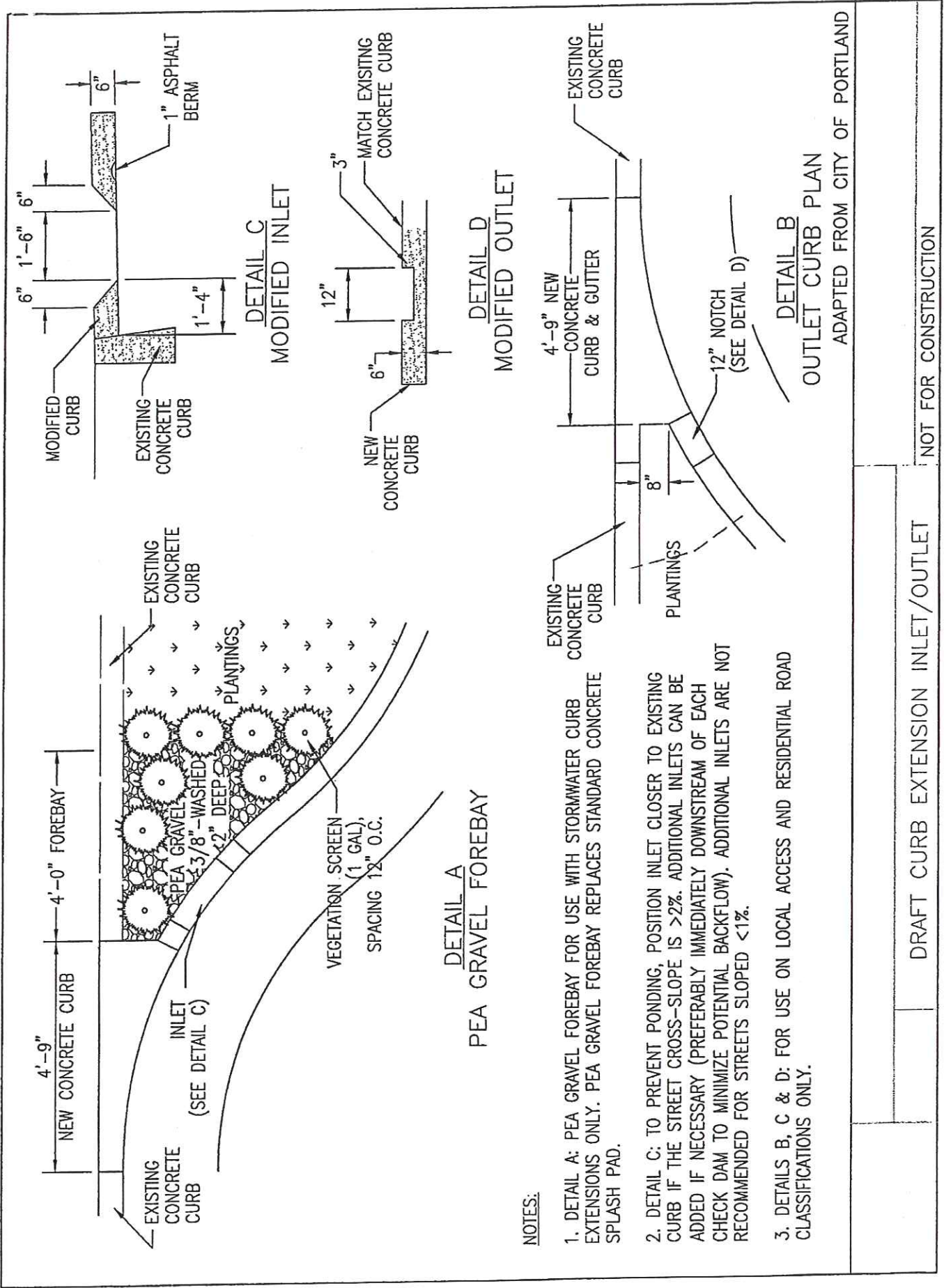
DRAFT REVERSE SLOPED SIDEWALKS

NOT FOR CONSTRUCTION



DRAFT STORMWATER PLANTER

NOT FOR CONSTRUCTION



NOTES:

1. DETAIL A: PEA GRAVEL FOREBAY FOR USE WITH STORMWATER CURB EXTENSIONS ONLY. PEA GRAVEL FOREBAY REPLACES STANDARD CONCRETE SPLASH PAD.
2. DETAIL C: TO PREVENT PONDING, POSITION INLET CLOSER TO EXISTING CURB IF THE STREET CROSS-SLOPE IS >2%. ADDITIONAL INLETS CAN BE ADDED IF NECESSARY (PREFERABLY IMMEDIATELY DOWNSTREAM OF EACH CHECK DAM TO MINIMIZE POTENTIAL BACKFLOW). ADDITIONAL INLETS ARE NOT RECOMMENDED FOR STREETS SLOPED <1%.
3. DETAILS B, C & D: FOR USE ON LOCAL ACCESS AND RESIDENTIAL ROAD CLASSIFICATIONS ONLY.

ADAPTED FROM CITY OF PORTLAND

