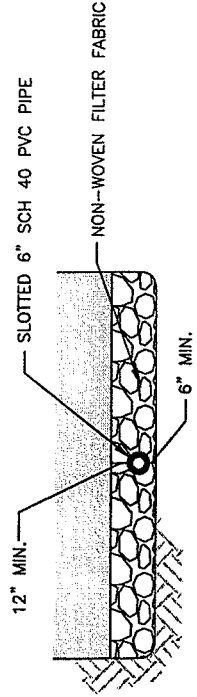
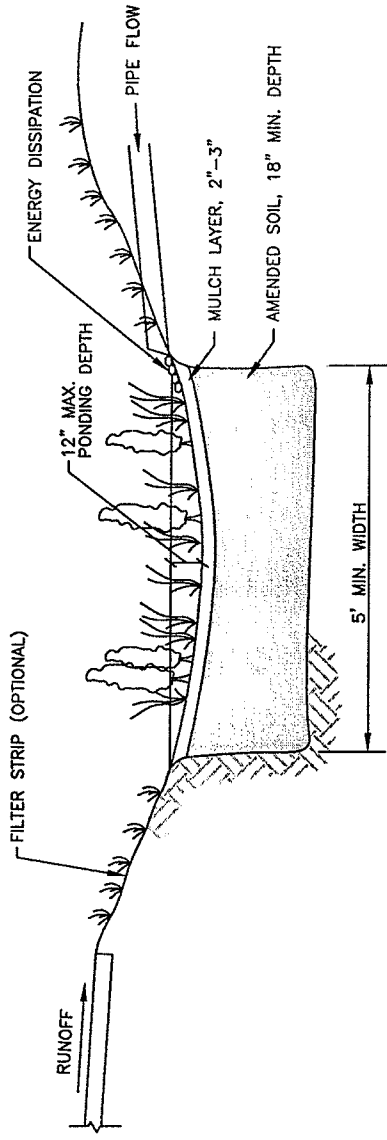


## Appendix D: LID Details



OPTIONAL UNDER DRAIN FOR POORLY DRAINED SOILS, SEE NOTE 3

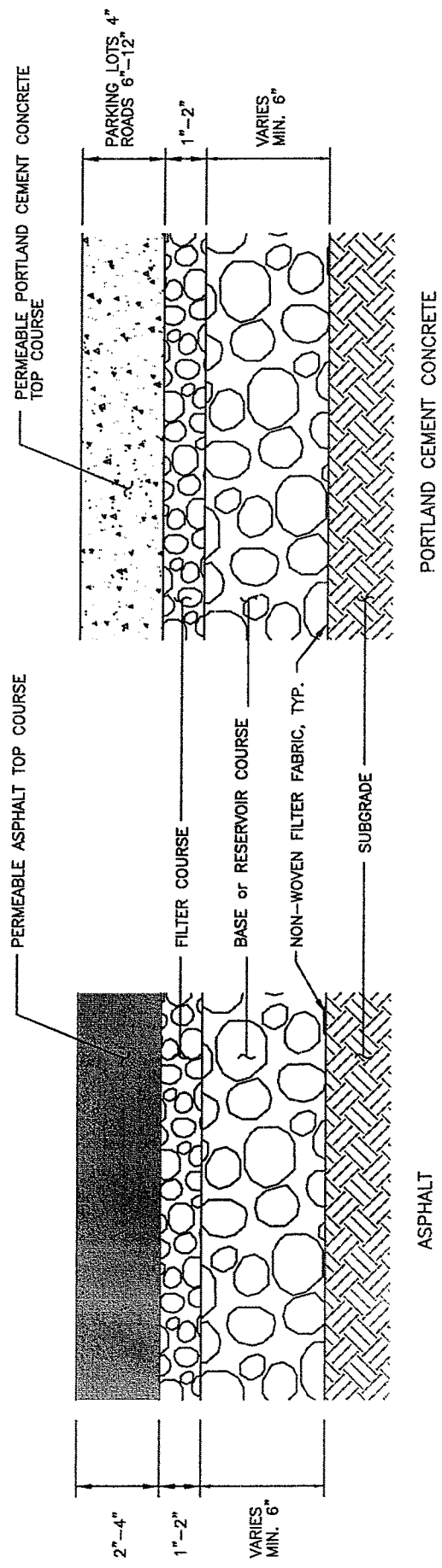
NOTES:

1. SIDE SLOPE WITHIN BIOTENTION AREA SHALL BE NO STEEPER THAN 3 HORIZONTAL TO 1 VERTICAL.
2. PROVIDE OVERFLOW FOR PONDING EXCEEDING 6 INCHES.
3. UNDER DRAIN MAY BE REQUIRED. SEE LID MANUAL FOR UNDER DRAIN CRITERIA.
4. SEE LID MANUAL FOR PLANTING REQUIREMENTS.

ADAPTED FROM PSAT

DRAFT RAIN GARDEN

NOT FOR CONSTRUCTION



NOTES:

1. 5% MAXIMUM SLOPE FOR POROUS PAVEMENT.
2. MIX DESIGN FOR POROUS ASPHALT AND POROUS CONCRETE SHALL BE SUBMITTED TO THE COUNTY FOR APPROVAL.

ADAPTED FROM PSAT

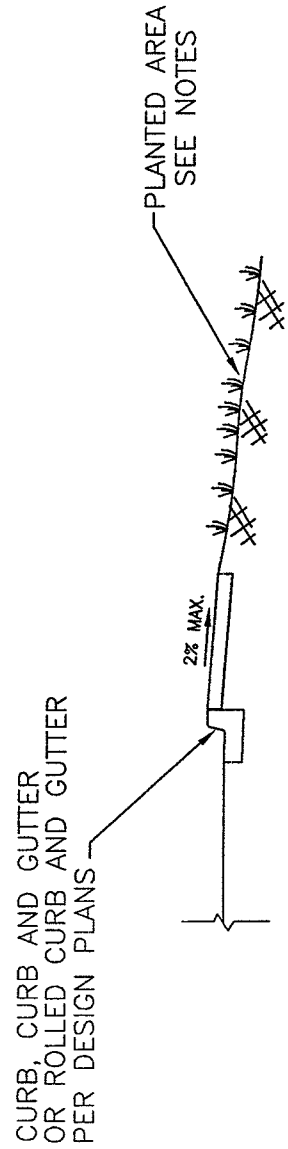
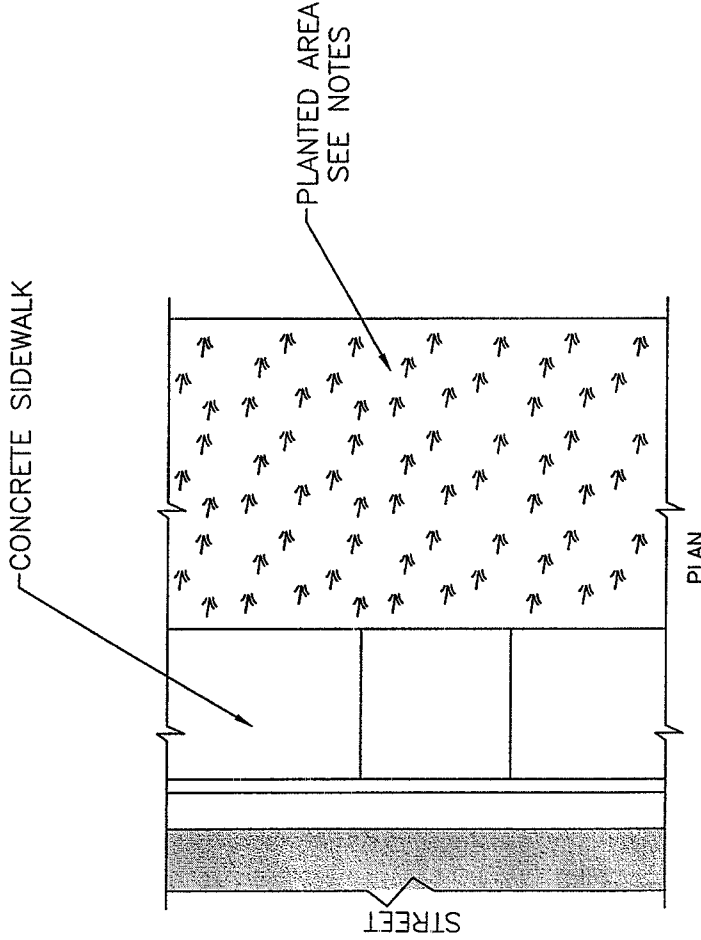
DRAFT POROUS PAVEMENT

NOT FOR CONSTRUCTION

NOTES

UNDISTURBED NATIVE SOIL WITH WELL ESTABLISHED NATIVE VEGETATION, OR ADDITIONAL LID BMP FACILITY, OR PLANTED SOIL AMMENDMENTS. SOIL AMMENDMENTS NECESSARY IF ONSITE SOILS ARE POORLY DRAINED OR IF NATIVE SOILS ARE DISTURBED IN A MANNER THAT REDUCES INFILTRATION RATES.

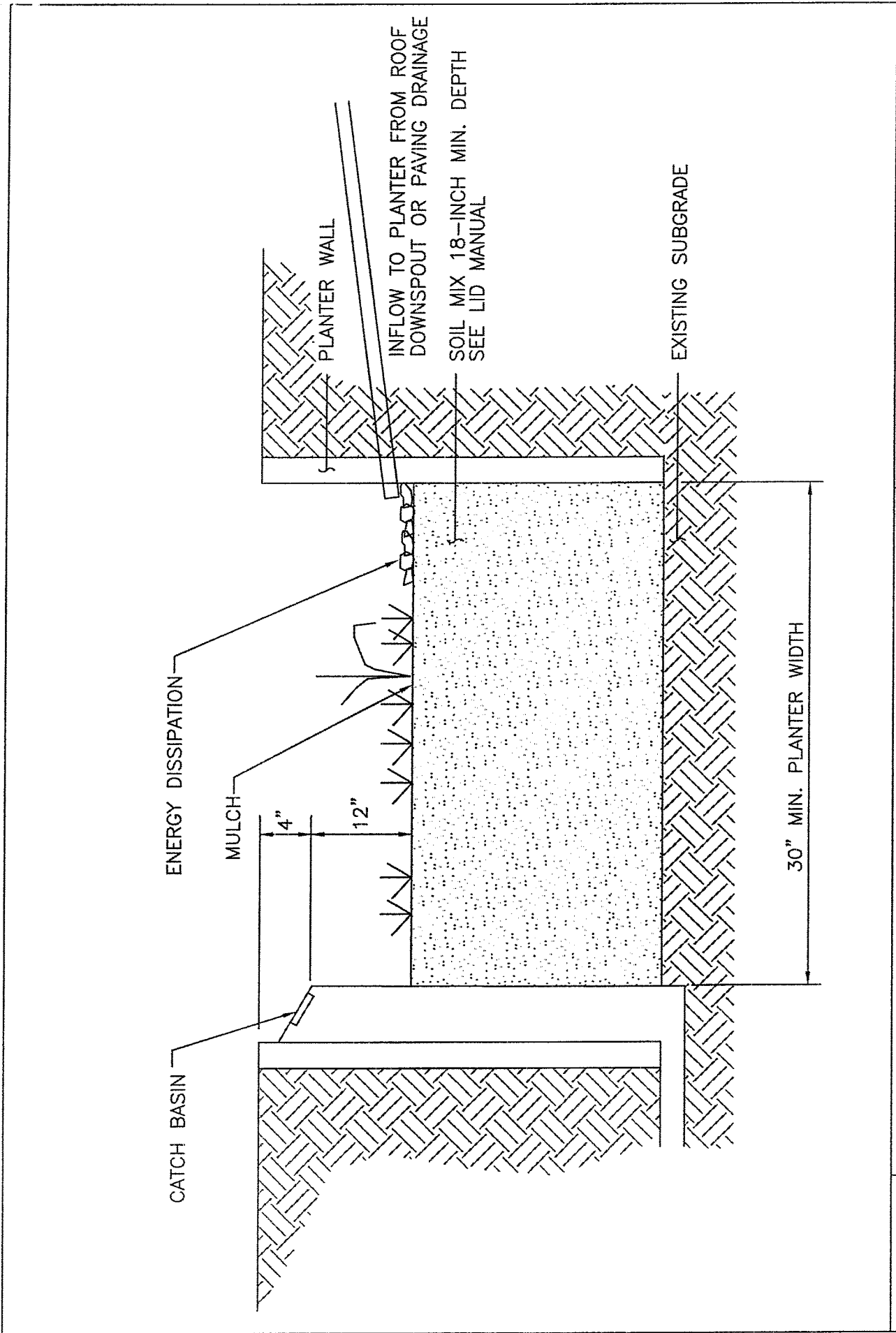
IF PLANTING AMENDED SOILS THE FOLLOWING SEED MIX SHALL BE USED:  
 40% TURF-TYPE RYE  
 40% FESCUE  
 10% WHITE DUTCH CLOVER  
 10% COLONIAL BENTGRASS



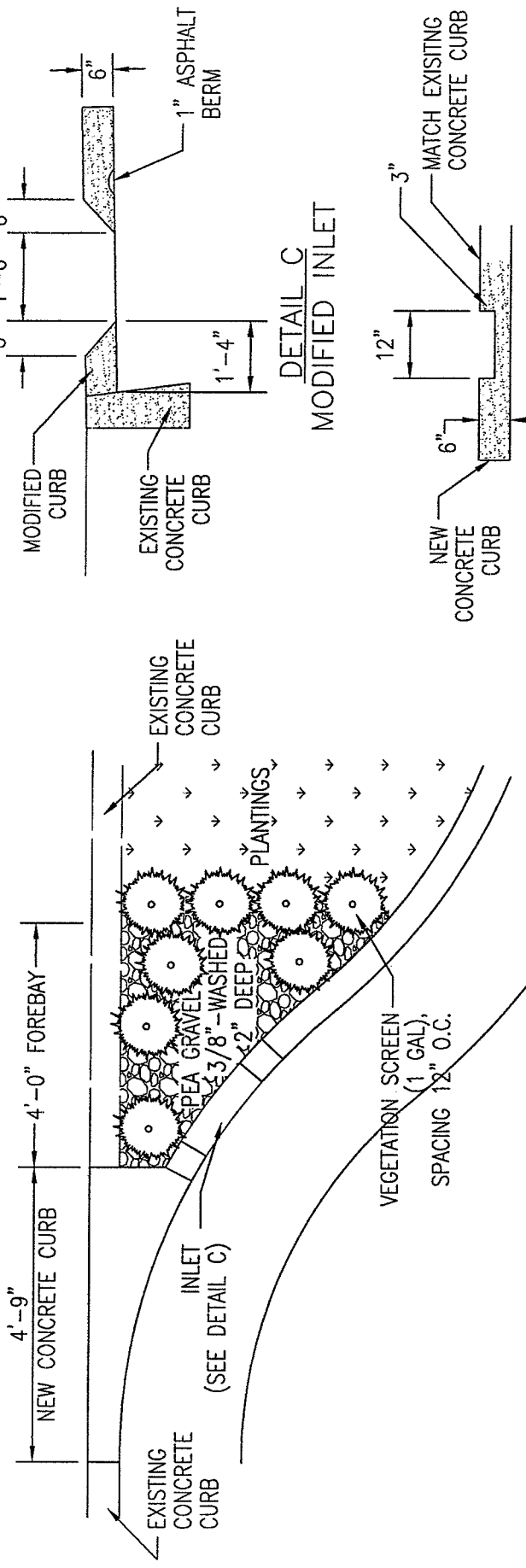
ADAPTED FROM PSAT

DRAFT REVERSE SLOPED SIDEWALKS

NOT FOR CONSTRUCTION



	DRAFT STORMWATER PLANTER
NOT FOR CONSTRUCTION	



**DETAIL A**  
PEA GRAVEL FOREBAY

**NOTES:**

1. DETAIL A: PEA GRAVEL FOREBAY FOR USE WITH STORMWATER CURB EXTENSIONS ONLY. PEA GRAVEL FOREBAY REPLACES STANDARD CONCRETE SPLASH PAD.
2. DETAIL C: TO PREVENT PONDING, POSITION INLET CLOSER TO EXISTING CURB IF THE STREET CROSS-SLOPE IS >2%. ADDITIONAL INLETS CAN BE ADDED IF NECESSARY (PREFERABLY IMMEDIATELY DOWNSTREAM OF EACH CHECK DAM TO MINIMIZE POTENTIAL BACKFLOW). ADDITIONAL INLETS ARE NOT RECOMMENDED FOR STREETS SLOPED <1%.
3. DETAILS B, C & D: FOR USE ON LOCAL ACCESS AND RESIDENTIAL ROAD CLASSIFICATIONS ONLY.

**DETAIL B**  
OUTLET CURB PLAN

ADAPTED FROM CITY OF PORTLAND