

Clark County Volunteer Monitoring Resource Center

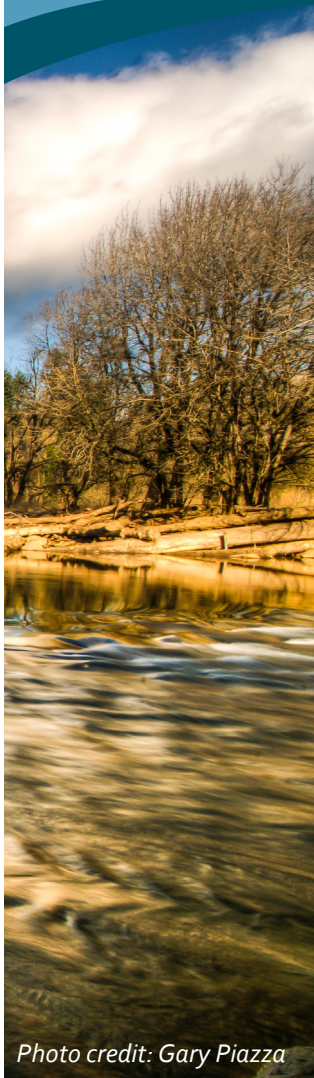


Photo credit: Gary Piazza

The Clark County Volunteer Monitoring Resource Center is a service of the Clean Water Division. It includes a library as well as water quality monitoring equipment for loan. Use of the materials is open to the general public, such as teachers, environmental organizations and local governmental agencies. While Clark County does not run a volunteer program at this time, these resources are available to interested citizens who are working to protect their local waterways.

Utilize this form to coordinate the type of materials you would like to borrow. Contact **Ian Wigger at (360) 397-2121 x 4282** for assistance.

Provide your contact information (Print):

Name: _____ Phone No. _____

Address: _____

City: _____, WA Zip Code: _____

Email: _____

Best time to contact you: Day(s) _____ Time: _____

Dates of use: Start - _____ Return - _____

LIBRARY

check which books you need to borrow

- Field Manual for Water Quality Monitoring:** an environmental education program for schools
- Riparian and Aquatic Ecosystem Monitoring:** a manual of field and lab procedures
- The Volunteer Monitor's Guide to Quality Assurance Project Plans**
- Streamkeeps Field Guide:** stream monitoring methods
- Adopt a Stream:** a NW handbook
- A Citizen's Guide to Understanding and Monitoring Lakes and Streams**
- Guide to Pacific Northwest Aquatic Invertebrates** (Oregon DEQ)
- Stream Bugs as Biomonitors:** Guide to Pacific Northwest macroinvertebrate monitoring (Xerces Society)
- The Lake Pocket Book**
- Management of Lakes and Reservoirs**
- Handbook for Wetlands Conservation and Sustainability**

For more information contact:

Clean Water Division
(360) 397-2121
cleanwater@clark.wa.gov



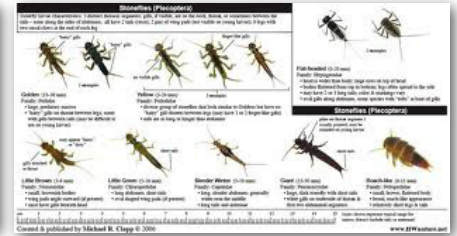
EQUIPMENT / RESOURCES

check which materials you need to borrow



BIOLOGICAL MONITORING

- MACROINVERTEBRATE COLLECTION KIT:** Nets, buckets, and bottles
- FIELD GUIDES:** Macroinvertebrate identification
- INTERPRETATION MATERIALS:** Identify stream health based on the bugs found



WATER CHEMISTRY MONITORING

- METERS:** pH, conductivity, temperature, dissolved oxygen and turbidity
- TEMPERATURE DATA LOGGERS:** Continuous in-stream monitoring
- AVAILABLE LABORATORIES:** To perform water quality analysis and results interpretation; fecal coliform density and nutrient loading



PHYSICAL HABITAT ASSESSMENT

- STREAM CHANNEL CHARACTERISTICS:** Methods, tools and equipment for measurements (e.g. pebbles, pools, woody debris)
- VEGETATION COVER:** Tools and procedures for measurements along corridor

LAKE MONITORING

- SECCHI DISKS:** Lake clarity
- GRAB SAMPLE EQUIPMENT:** Up to depths of 70 feet



HYDROLOGIC MONITORING

- VELOCITY METER AND TOP-SETTING ROD:** Streamflow
- METHODS AND PROCEDURES:** Streamflow measurement



PROTECTIVE GEAR

- WADERS / KNEE BOOTS**
- NEOPRENE GLOVES**
- FIRST AID KITS**
- SAFETY VESTS**



Clark County Public Works
P.O. Box 9810
Vancouver, WA 98660
(360) 397-2121

www.clark.wa.gov/stormwater

