



**PROVIDENCE ACADEMY  
MECHANICAL & ELECTRICAL UPGRADES**

400 E Evergreen Blvd

**DRAWING INDEX**

- HR-01 | COVER
- HR-02 | EXISTING SITE PLAN
- HR-03 | DETAIL PLAN: SITE WORK AREA #1
- HR-04 | DETAIL PLAN: SITE WORK AREA #2
- HR-05 | BASEMENT PLAN: EXTERIOR BUILDING MODIFICATIONS
- HR-06 | FIRST FLOOR PLAN: EXTERIOR BUILDING MODIFICATIONS
- HR-07 | ROOF LEVEL PLAN: EXTERIOR BUILDING MODIFICATIONS
- HR-08 | EXTERIOR ELEVATION: NORTHWEST AREA LOWER LEVEL
- HR-09 | EXTERIOR ELEVATION: SOUTHWEST AREA, LOWER LEVEL
- HR-10 | EXTERIOR ELEVATION: FIRST LEVEL TOILET ROOMS
- HR-11 | EXTERIOR ELEVATION: NORTHWEST ROOF
- HR-12 | EXTERIOR ELEVATION: NORTHEAST ROOF
- HR-13 | EXTERIOR ELEVATION: NORTH WING EAST SIDE
- HR-14 | LOUVER PRODUCT INFORMATION



A: FROM REQUIRED VIEW CORRIDOR



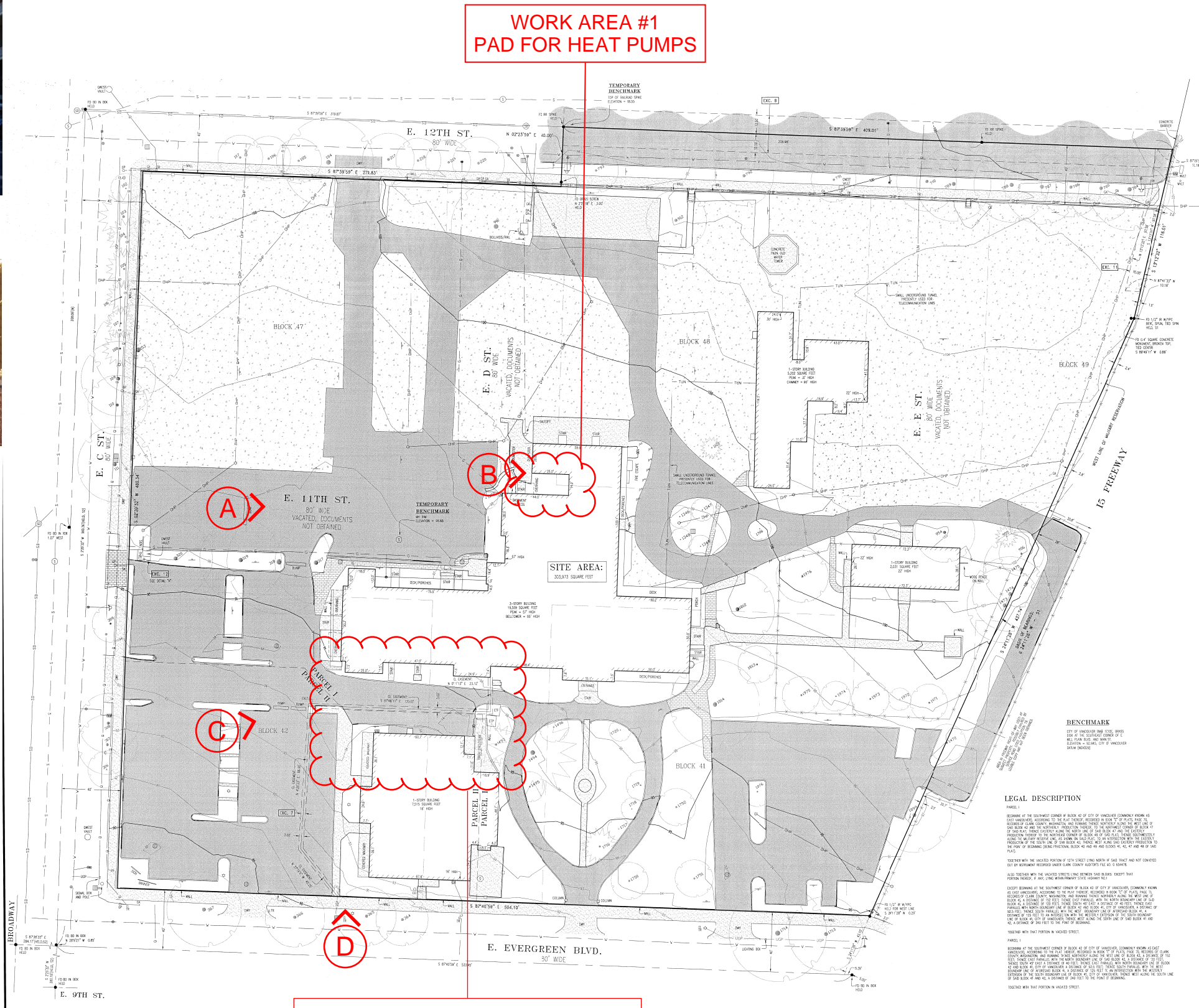
B: INTO ALCOVE

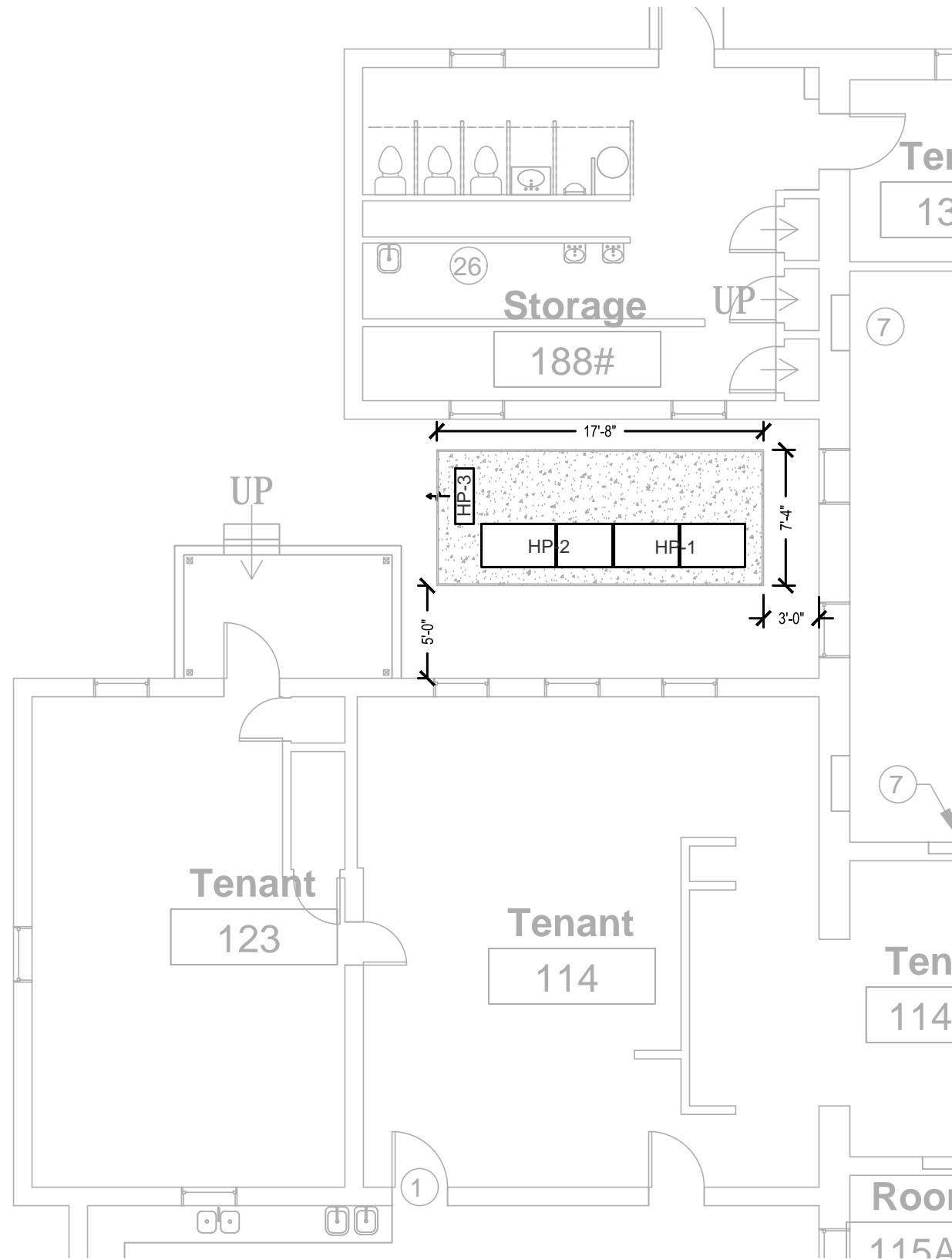


C: OF SOUTHWEST CORNER



D: FROM EVERGREEN BLVD

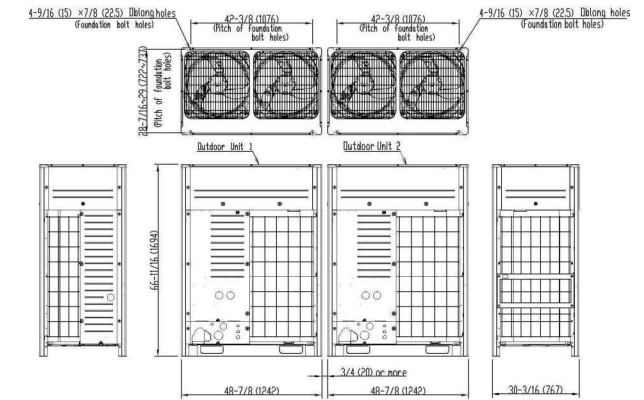




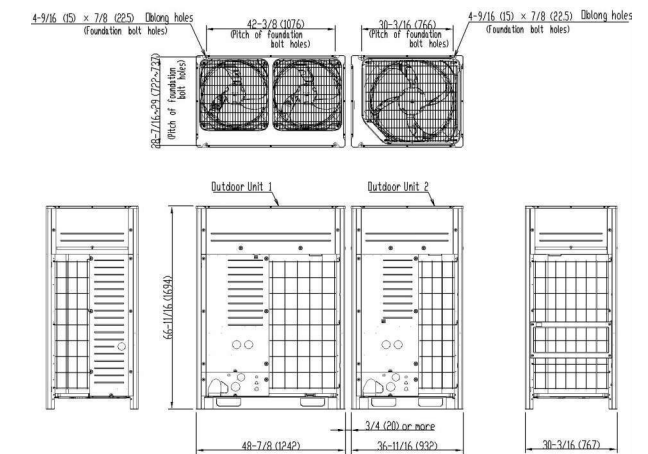
**PLAN: EQUIPMENT PAD WITH HEAT PUMPS**



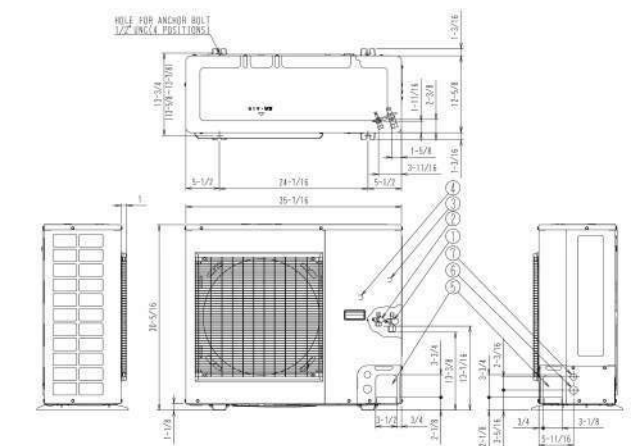
**HEAT PUMP 1 (HP-1)**  
 HEIGHT: 66-11/16"  
 WIDTH: 36-11/16" + 48-7/8" = 85-9/16"  
 DEPTH: 30-3/16"



**HEAT PUMP 2 (HP-2)**  
 HEIGHT: 66-11/16"  
 WIDTH: 48-7/8" + 48-7/8" = 97-3/4"  
 DEPTH: 30-3/16"



**HEAT PUMP 3 (HP-3)**  
 HEIGHT: 30-5/16"  
 WIDTH: 35-7/16"  
 DEPTH: 12-5/8"

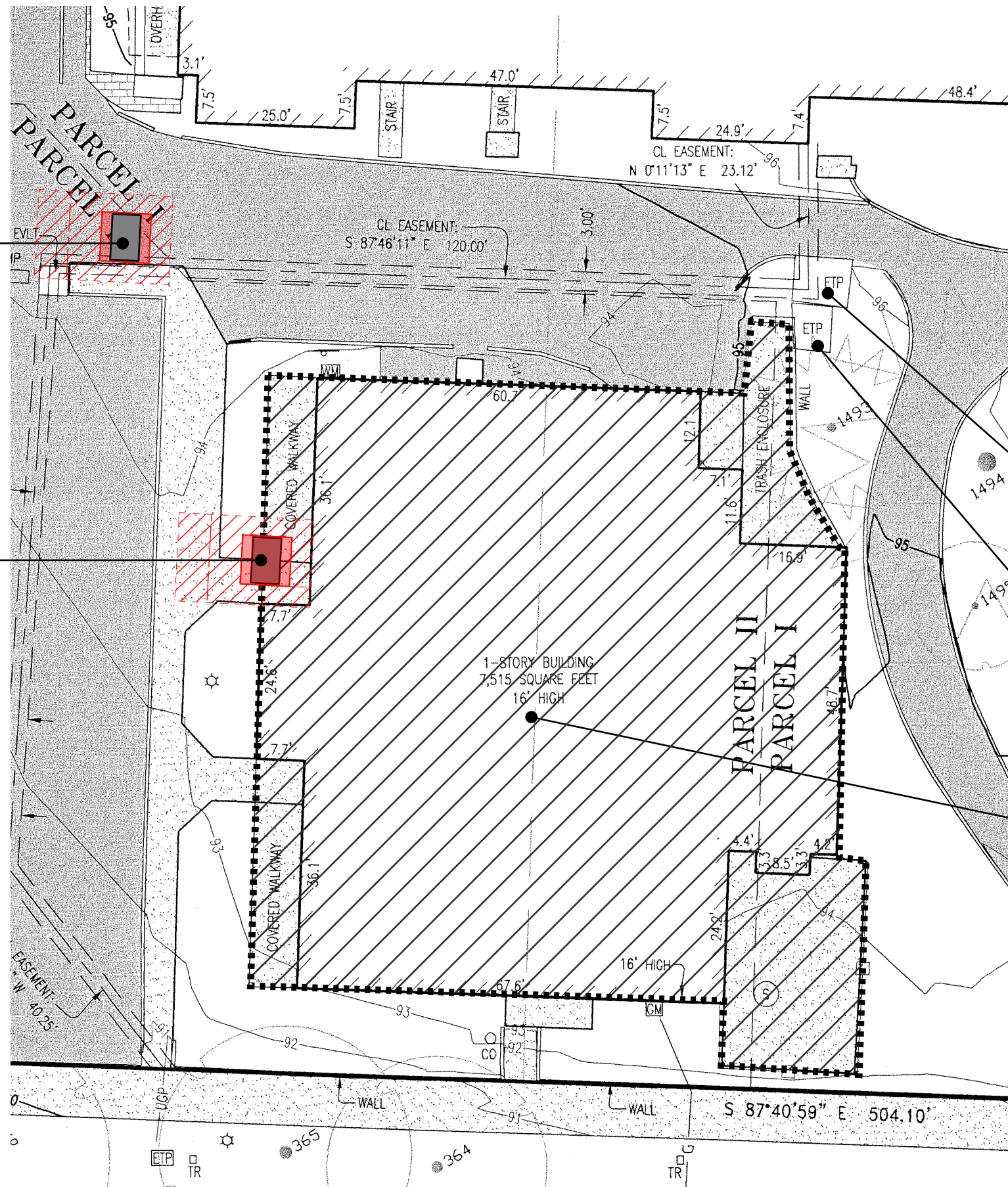


ALTERNATE TRANSFORMER LOCATION  
IF DEMOLITION OF RESTAURANT AND  
CLEARING OF SITE NOT COMPLETED BY  
28 FEBRUARY 2019

PREFERRED TRANSFORMER LOCATION  
CONTINGENT ON DEMOLITION AND  
CLEARING OF RESTAURANT SITE



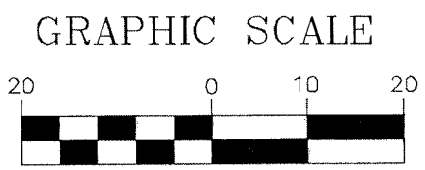
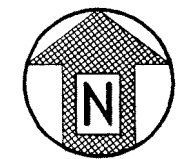
**PROPOSED THREE-PHASE  
PAD-MOUNTED TRANSFORMER**  
HEIGHT: 64"  
WIDTH: 89"  
DEPTH: 57"  
CONCRETE MOUNTING PAD: 96"x96"

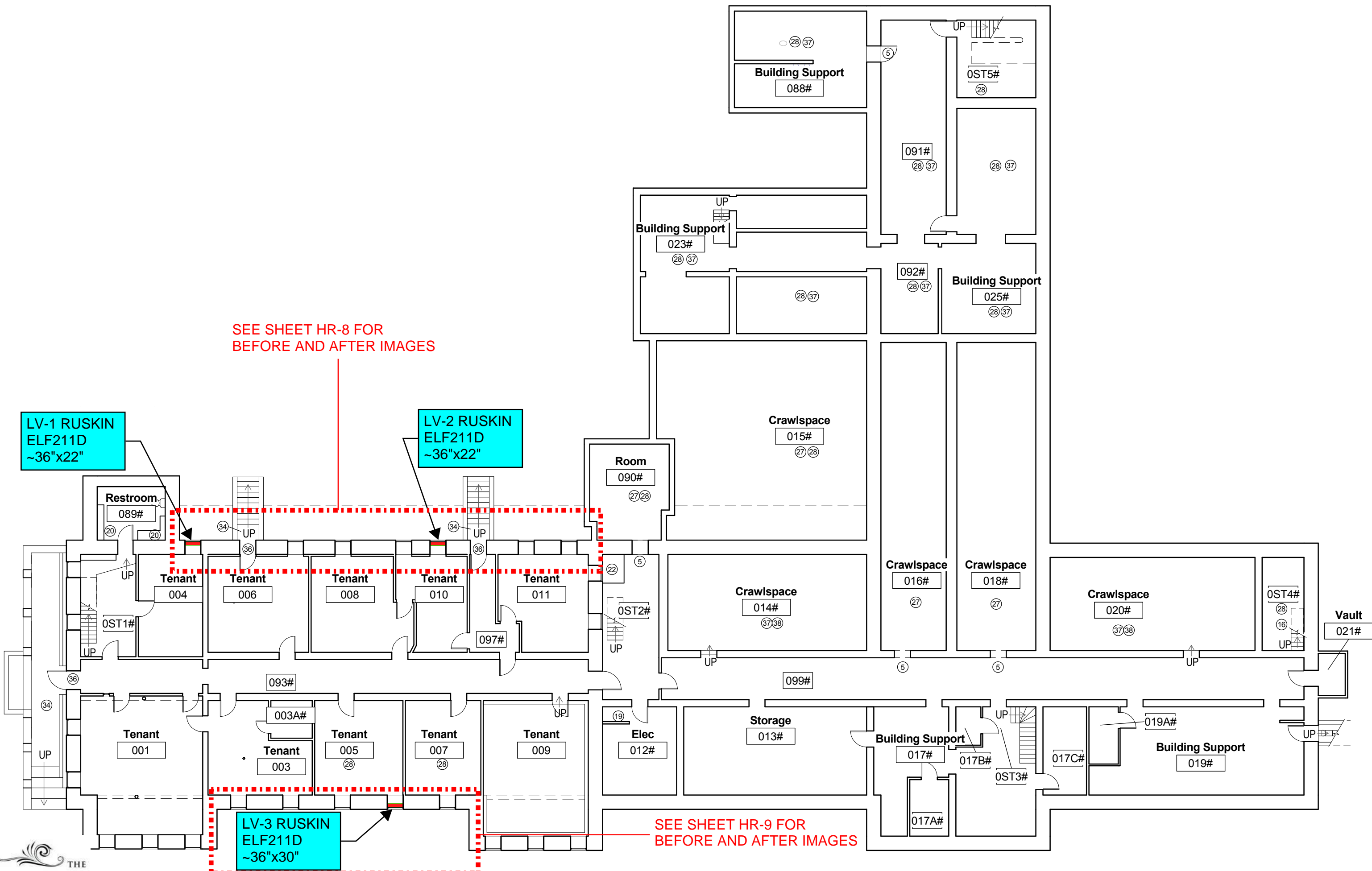


EXISTING ACADEMY  
ELECTRICAL TRANSFORMER:  
TO BE DEMOLISHED AND BE  
REPLACED WITH SOIL AND  
MULCH

EXISTING RESTAURANT  
ELECTRICAL TRANSFORMER;  
PROPOSED TO REMAIN  
THROUGH CONSTRUCTION OF  
HOUSING PROJECT

EXISTING RESTAURANT BUILDING  
(TO BE DEMOLISHED AND REPLACED  
WITH SOIL AND GRASS PER PENDING  
APPLICATION "LUP-69248")





SEE SHEET HR-8 FOR BEFORE AND AFTER IMAGES

SEE SHEET HR-9 FOR BEFORE AND AFTER IMAGES

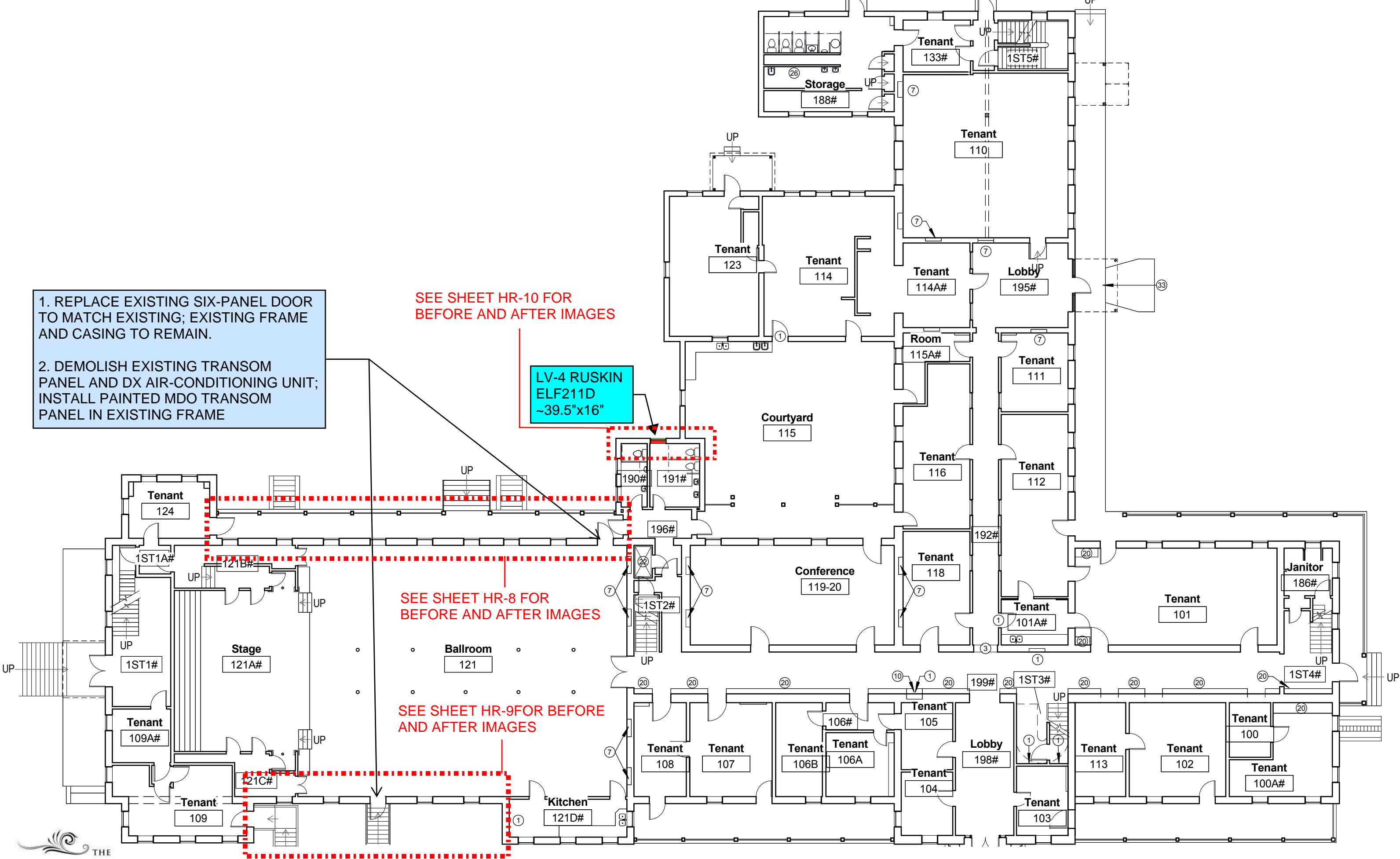
1. REPLACE EXISTING SIX-PANEL DOOR TO MATCH EXISTING; EXISTING FRAME AND CASING TO REMAIN.
2. DEMOLISH EXISTING TRANSOM PANEL AND DX AIR-CONDITIONING UNIT; INSTALL PAINTED MDO TRANSOM PANEL IN EXISTING FRAME

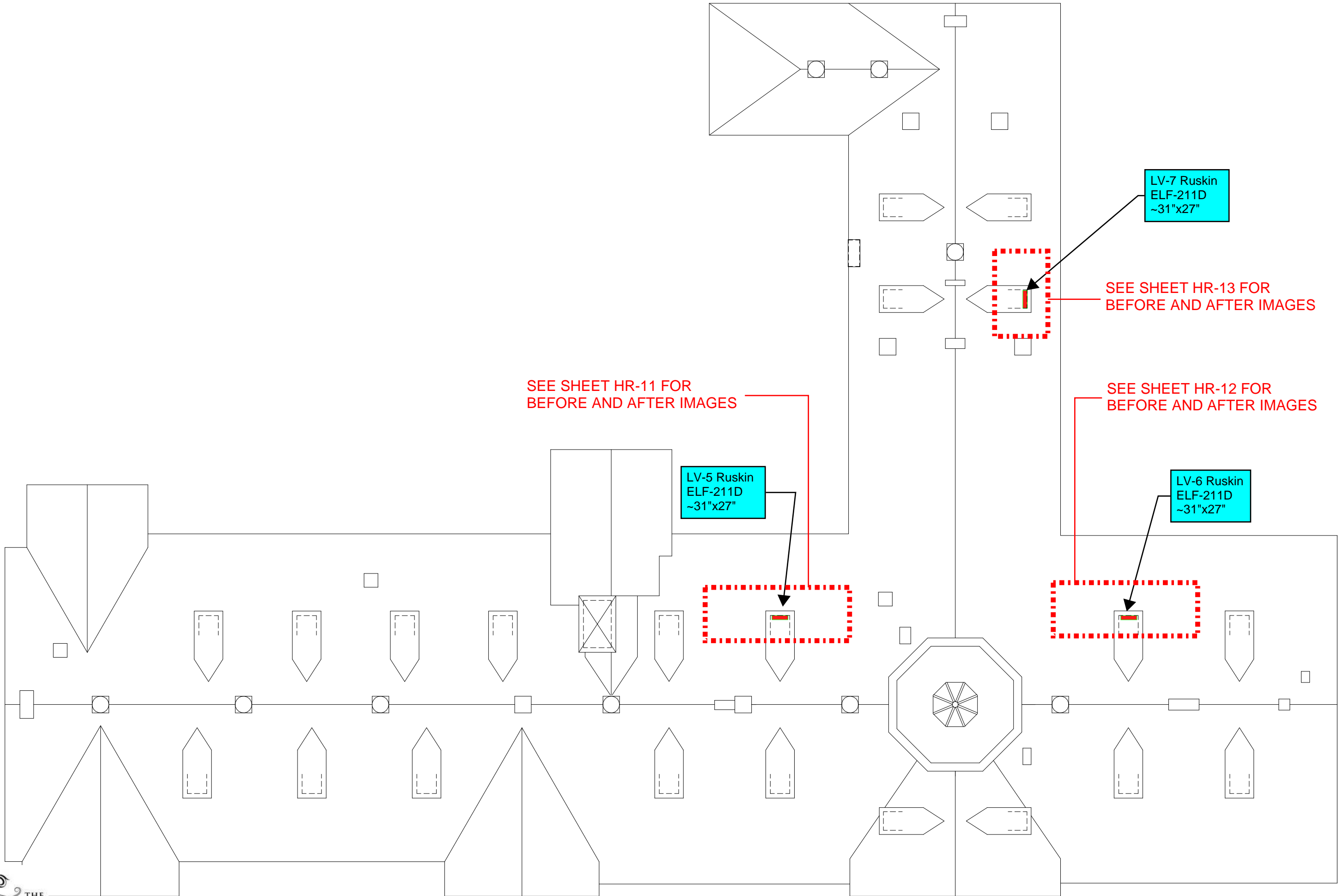
SEE SHEET HR-10 FOR BEFORE AND AFTER IMAGES

LV-4 RUSKIN  
ELF211D  
~39.5"x16"

SEE SHEET HR-8 FOR BEFORE AND AFTER IMAGES

SEE SHEET HR-9 FOR BEFORE AND AFTER IMAGES





SEE SHEET HR-11 FOR  
BEFORE AND AFTER IMAGES

SEE SHEET HR-13 FOR  
BEFORE AND AFTER IMAGES

SEE SHEET HR-12 FOR  
BEFORE AND AFTER IMAGES

LV-5 Ruskin  
ELF-211D  
~31"x27"

LV-7 Ruskin  
ELF-211D  
~31"x27"

LV-6 Ruskin  
ELF-211D  
~31"x27"



**EXISTING**



↑  
REMOVE AC UNIT FROM  
TRANSOM; REPLACE WITH  
PAINTED MDO PANEL

↑  
LV-2 INSTALLED  
BEHIND EXISTING  
STEPS

↑  
LV-1 INSTALLED  
BEHIND EXISTING  
LATTICE

**AFTER REMOVING AC UNIT AND INSTALLING LOUVERS**





**EXISTING**



REMOVE AC UNIT FROM  
TRANSOM; REPLACE WITH  
PAINTED MDO PANEL

LV-3 INSTALLED  
BEHIND EXISTING  
STEPS

**AFTER REMOVING AC UNIT AND INSTALLING LOUVER**



**EXISTING**



AFTER REPLACING  
TRANSOM WINDOW  
WITH LV-4

**AFTER INSTALLING LOUVER**



**EXISTING**



AFTER REPLACING  
DORMER WINDOW  
WITH LV-5

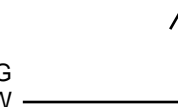
**AFTER INSTALLING LOUVER**



**EXISTING**



AFTER REPLACING  
DORMER WINDOW  
WITH LV-6



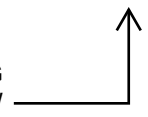
**AFTER INSTALLING LOUVER**



**EXISTING**



AFTER REPLACING  
DORMER WINDOW  
WITH LV-7



**AFTER INSTALLING LOUVER**

## ELF211D DRAINABLE THIN LINE STATIONARY LOUVER EXTRUDED ALUMINUM

RUSKIN finishes enhance product appearance to blend with other colors selected.

These same finishes provide extended weathering resistance similar to adjacent building surfaces. RUSKIN provides most finishes available to architects and engineers. The standard finishes described herein represent those finishes usually selected, specified, or required for most applications.

### STANDARD CONSTRUCTION

#### FRAME

2" (51) deep 6063T5 extruded aluminum, .060" (1.5) nominal wall thickness. Downspouts and caulking surfaces provided.

#### BLADES

6063T5 extruded aluminum, .060" (1.5) nominal wall thickness. Drainable blades are positioned at 45° angle and spaced approximately 27/16" (62) center to center.

#### SCREEN

3/4" x .051" (19 x 1.3) expanded, flattened aluminum bird screen in removable frame. Screen adds approximately 1/2" (13) to louver depth.

#### FINISH

Mill.

#### MINIMUM SIZE

6"w x 10"h (152 x 254).

#### APPROXIMATE SHIPPING WEIGHT

2 lbs. per sq. ft. (9.8 kg/m<sup>2</sup>).

#### MAXIMUM FACTORY ASSEMBLY SIZE

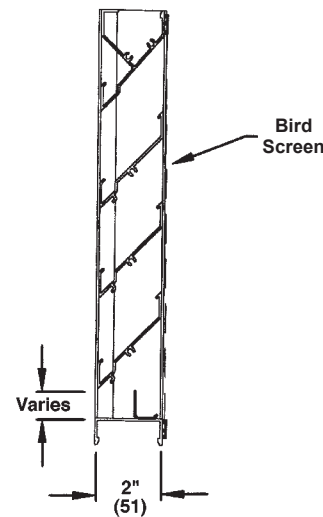
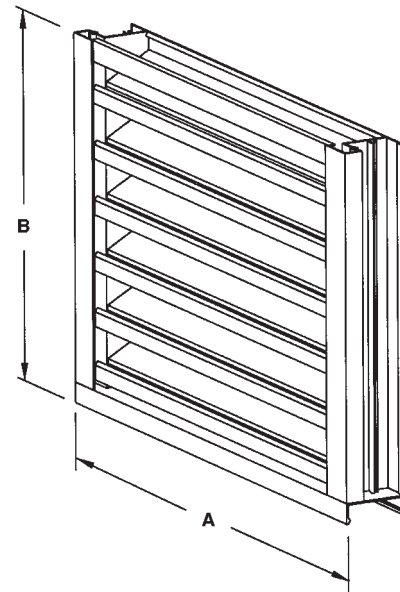
Shall be 75 sq. ft. (7m<sup>2</sup>) per section, not to exceed 120"w x 90"h (3048 x 2286) or 90"w x 120"h (2286 x 3048).

Louvers larger than the maximum factory assembly size will require field assembly of smaller sections.

#### SUPPORTS

Louvers may be provided with rear mounted Hidden Vertical Blade Supports that increase overall louver depth depending on louver size, assembly configuration or wind-load.

Consult Ruskin for additional information.



### FEATURES

The ELF211D offers:

- 38% Free Area.
- Published performance ratings based on testing in accordance with AMCA Publication 511.
- High performance frame system with drainable head collects and removes water to provide excellent water penetration performance.
- Drain gutter in each blade minimizes water cascade between blades.
- Architecturally styled, hidden mullions allowing continuous blade appearance up to 120" (3048).
- All aluminum construction for low maintenance and high resistance to corrosion.

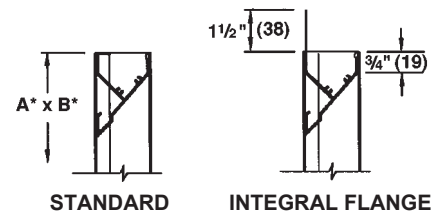
### VARIATIONS

Variations to the basic design of the louver are available at additional cost. They include:

- Extended sill.
- Hinged frame.
- Front or rear security bars.
- Filter racks.
- Installation angles.
- A variety of bird and insect screens.
- Selection of finishes: prime coat, baked enamel (modified fluoropolymer), epoxy, Acrodize, Kynar, clear and color anodize. (Some variation in anodize color consistency is possible.)

Consult Ruskin for other special requirements.

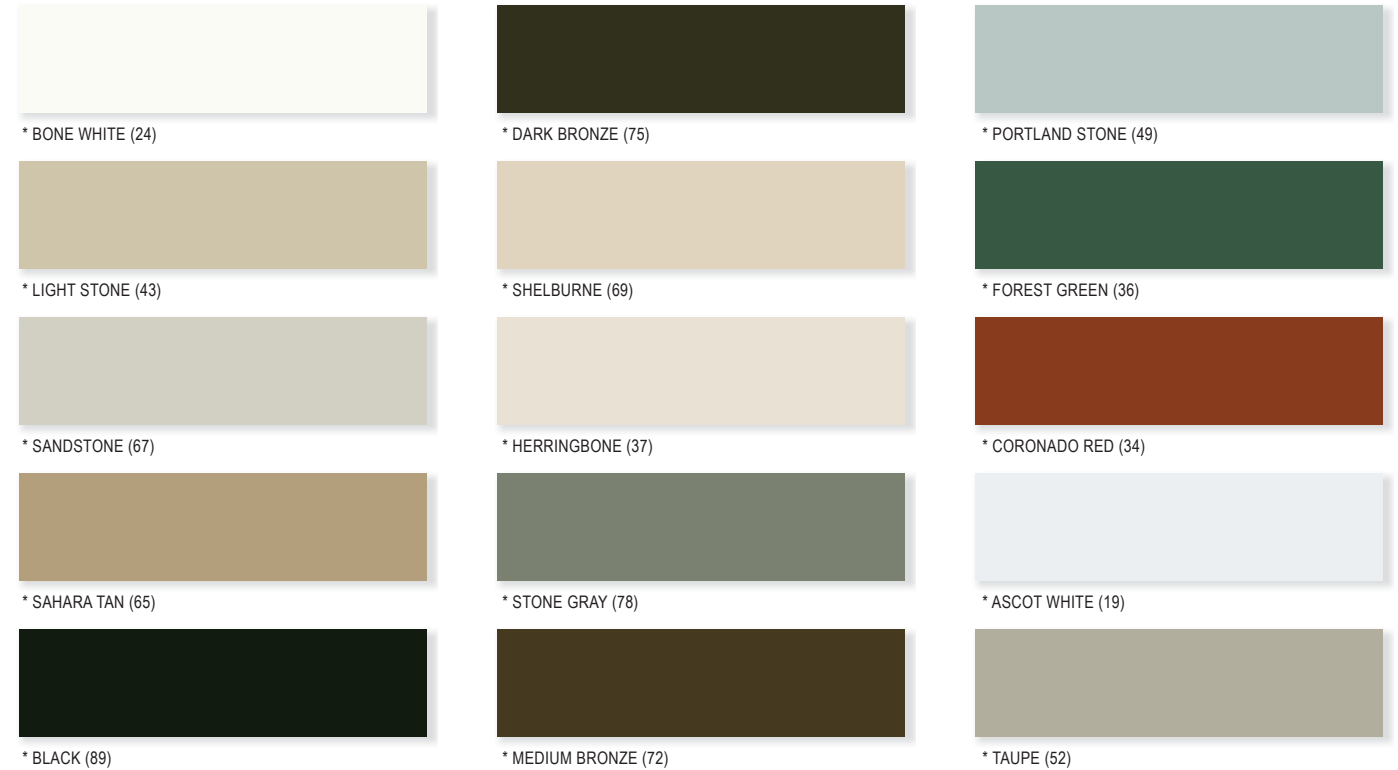
### FRAME CONSTRUCTION



## Finishes and Color Guide

### 2 Coat - 50% and 70% PVDF - Standard Colors

The 15 colors below are available in 2 Coat (50% PVDF) or 2 Coat (70% PVDF) finishes only.



## Pearledize 70 and Pearledize 50 Standard Colors

The 9 colors below are available in Pearledize 70, Pearledize 50, Clear or Color Anodize finishes only, and may be more expensive than the 50% and 70% PVDF colors shown above. Italicized color names and codes are available in Anodized Finish.

