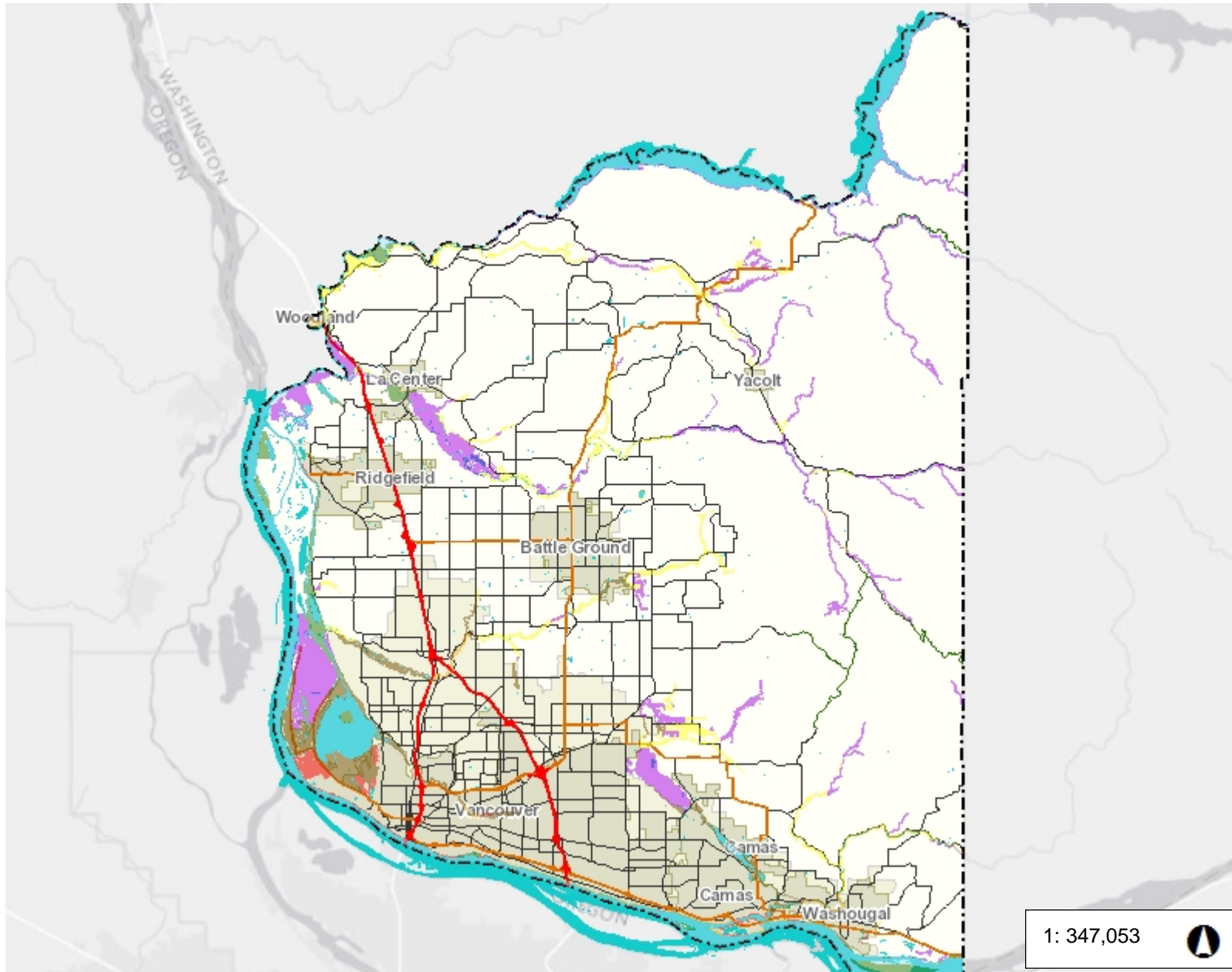
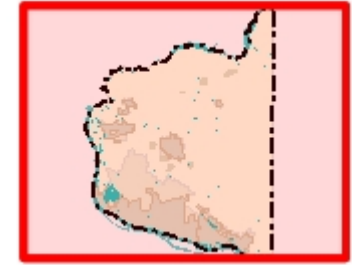




Clark County Shoreline Designations

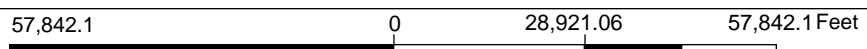


Legend

Shoreline Designations

- Aquatic
- Natural
- Urban Conservancy
- Medium Intensity
- High Intensity
- Rural Conservancy Residential
- Rural Conservancy Resource Land
- Cities Boundaries
- Urban Growth Boundaries

1: 347,053



WGS_1984_Web_Mercator_Auxiliary_Sphere
Clark County, WA. GIS - <http://gis.clark.wa.gov>

This map was generated by Clark County's "MapsOnline" website. Clark County does not warrant the accuracy, reliability or timeliness of any information on this map, and shall not be held liable for losses caused by using this information.

Notes:

The Clark County Shoreline Master Program applies to all of the shorelands and waters within the unincorporated Clark County limits that fall under the jurisdiction of Chapter 90.58 RCW.