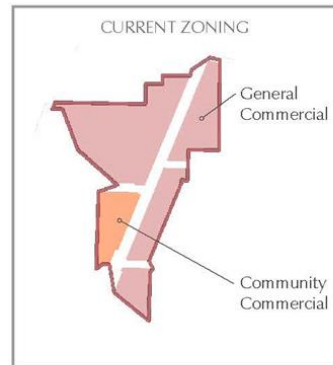


EXHIBIT 2

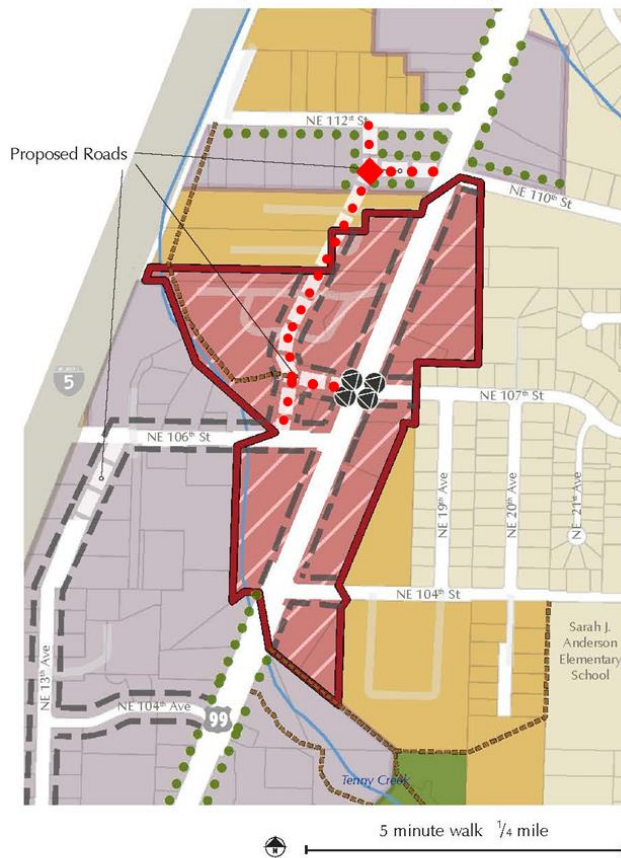
2.1.2 Tenny Creek COMMONS



Tenny Creek Commons is envisioned as a compact neighborhood center emphasizing a variety of multifamily uses and supporting small scale retail uses. Redevelopment will be configured to use Tenny Creek as an amenity and provide enhanced environmental conditions.



Tenny Creek Commons Overlay



LEGEND

- Activity Center Overlay 4
4 story height limit*
- Mixed-Use Street type
- Landscape Street type

* Six stories are permitted for vertical mixed-use.

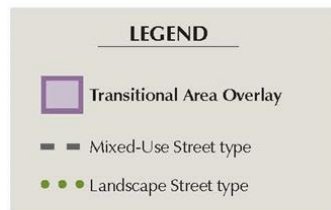
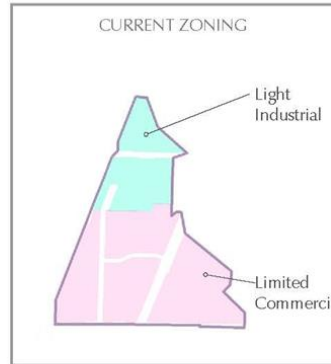
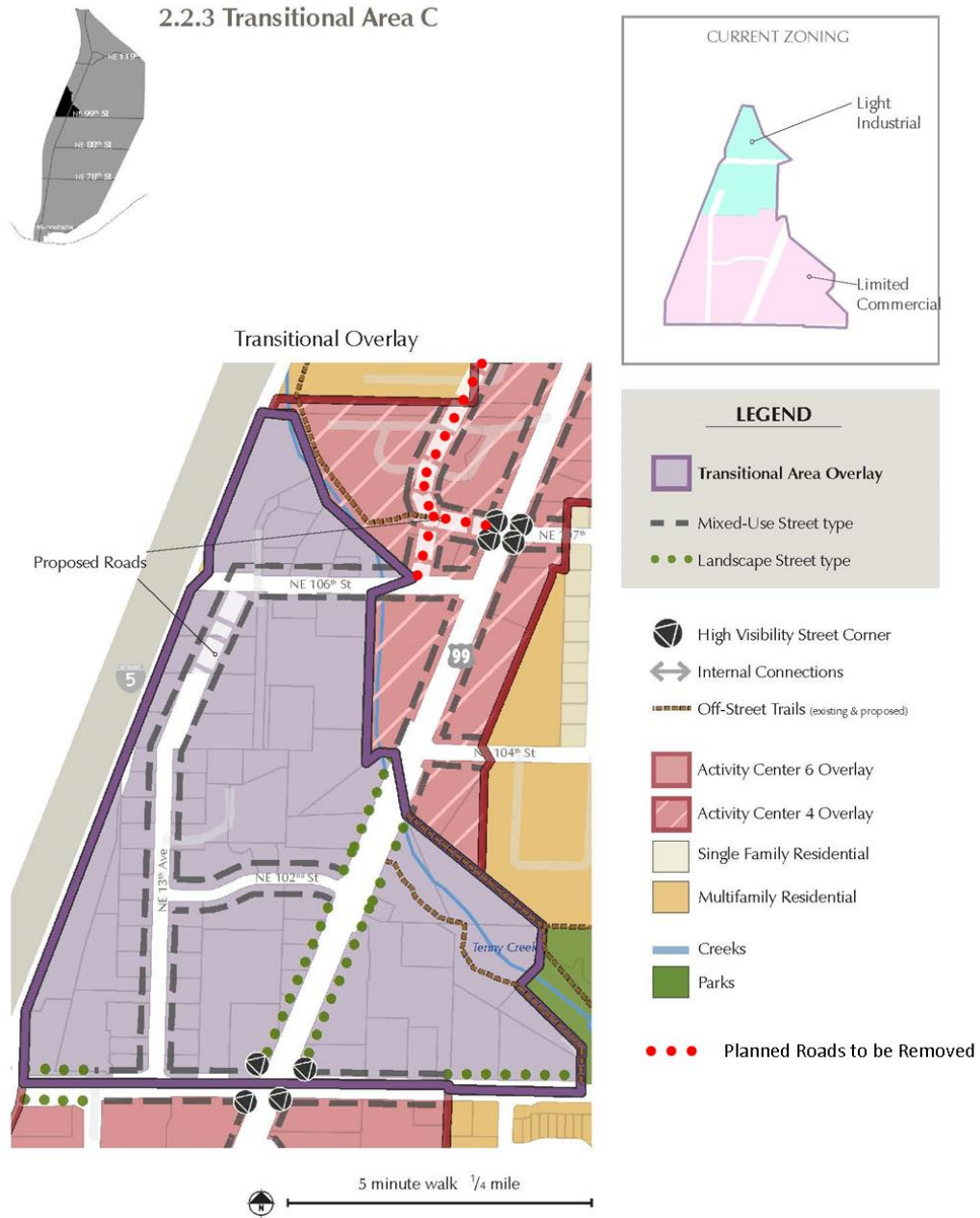
- High Visibility Street Corner
- Internal Connections
- Off-Street Trails (existing & proposed)

- Transitional Overlay
- Single Family Residential
- Multifamily Residential

- Creeks
- Parks

- Planned roads to be removed

2.2.3 Transitional Area C



The map shows the coastline of Antarctica with several sampling stations marked. The stations are labeled as NE 119, NE 99° S, NE 00° S, and NE 70° S. The station NE 119 is located in the northernmost part of the area, while NE 70° S is the southernmost. The stations NE 99° S and NE 00° S are located between NE 119 and NE 70° S. The coastline of Antarctica is shown as a solid line, and the sampling stations are marked with dots.

