

Freight Rail Dependent Uses

County Council work session— July 18, 2018



Jose Alvarez and Oliver Orjiako, Community Planning

Agenda

- FRDUAC Final Recommendations
 - Revised Overlay map
 - Amendment process for overlay map revisions
 - Cross references
- Next Steps



Revised Overlay Map

Proposed a definition of adjacent to include parcels within 1 mile of rail line

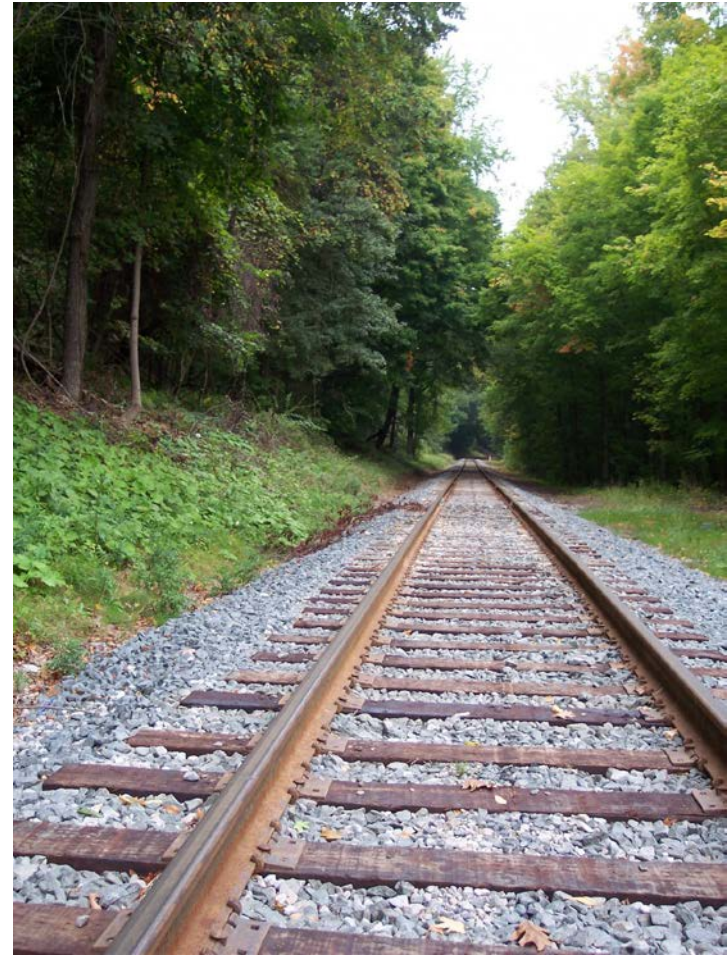
- Annual comprehensive plan map amendment
- Additional environmental analysis on areas not currently studied



Amendment Process for Overlay Map

Added language to CCC 40.560.010 Plan Amendment Procedures

- Expansion or creation of a new overlay is an annual review
- Removal of parcel(s) from overlay is a docket request.
- New overlay area requires a minimum of 100 acres and petition of 60% of property owners.
- Railroad advisory board to be notified and consulted of any proposed amendment.



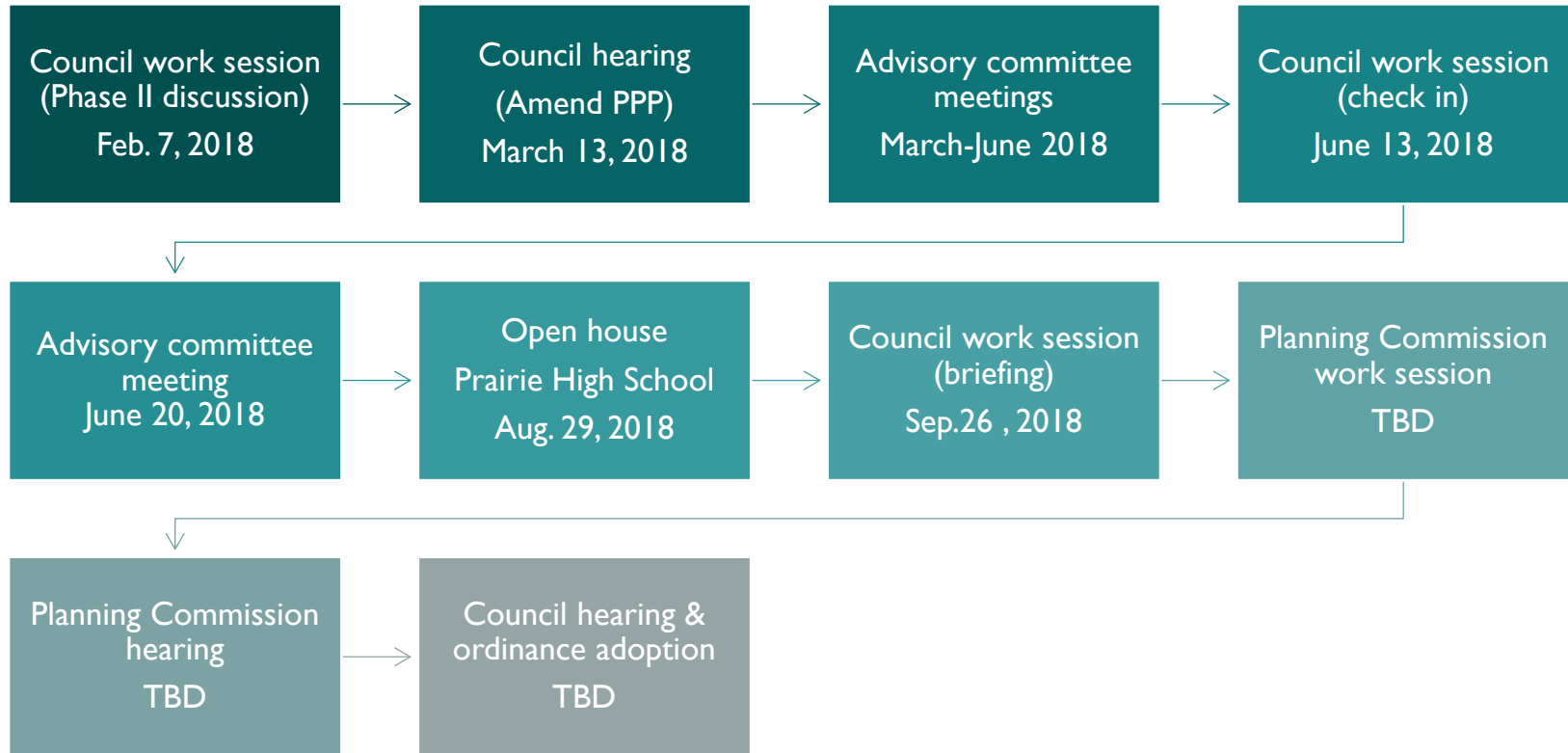
Cross References

Proposed code amendments to the following sections for cross referencing with new Freight Rail Dependent Use code section.

- CCC 40.320.010 Landscaping Standards
- CCC 40.340.010 Parking and Loading Standards
- CCC 40.520.040 Site Plan Review



Phase II Schedule



Thank you!

Comments and questions

Clark County Community Planning

Clark County Public Service Center

1300 Franklin Street • PO Box 5000

Vancouver, WA 98666-5000

