



## Clark County Jail

# Operational, Functional, and Physical Limitations

**Presented by:**

Chuck Atkins, Sheriff

Ric Bishop, Chief Deputy

DLR Group, Architecture Engineering Planning Interiors



## Introduction

Sheriff Atkins

## Historic Overview

Chief Bishop

- Clark County Main Jail and Jail Work Center
- 2012 – Inmate Suicides: BOCC - \$546,000
- 2013 – Change in Philosophy from Custody to Corrections
- 2014 – Corrections Programs through Reentry and Community Partners: BOCC - \$430,000 (on-going biennial appropriation)
- 2015 – Smoke Pours from East Side of Jail Exhaust Vent: BOCC - \$250,000
- 2015 – Sheriff Requests Holistic Assessment of Jail System: BOCC - \$300,000
- 2016 – Suicide Mitigation Continues: BOCC - \$833,000

## Introduction of DLR Group



## Needs Assessment Scope

The Focus

Incarceration Rates

Capacity

Operational Assessment

Facility Assessment

Space Needs Assessment



# The Focus

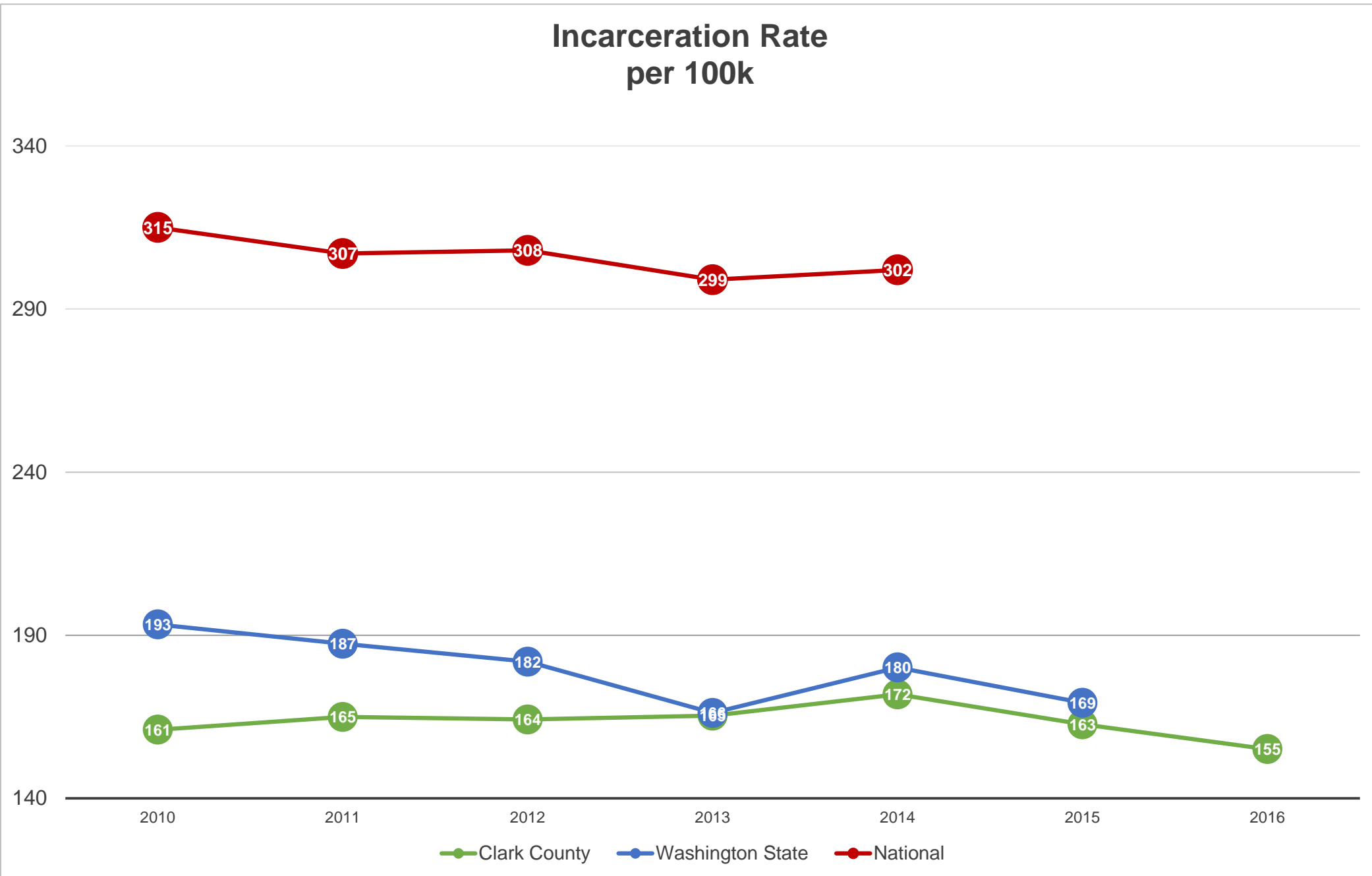


JWC

Jail



## Incarceration Rate per 100k





## Challenges - Capacity

Current Capacity – 793 beds with 120 closed beds

Need the right beds in the right location

| Calculation Method | Offender Population | Bed Need | Design/Estimating Range |
|--------------------|---------------------|----------|-------------------------|
| Method I           | 1,050               | 1,260    | 1,197 – 1,323           |
| Method II          | 1,367               | 1,640    | 1,558 – 1,722           |
| Method III         | 924                 | 1,109    | 1,054 – 1,165           |

Note: Projections are to year 2036

## Classification Types

Medium (levels 4-5-6)

Maximum (levels 7-8-9)

Assessment (levels TBD)

Medical (all levels)

ATR (Adult Transition & Reentry: levels 1-2-3)



## Operational Assessment

### Positive Components

- Staff
- Programs
- JWC

### Intake

- Detox – Overcrowded and inadequate.
- Vehicular Sally –Not large enough for the volume
- Staff area – a single custody staff space also serves as temporary storage for property.
- Medical access – minimally adequate.
- Offender Property – locker system is inadequate

### Programs

- Limited space does not allow all offenders access to programs
- Space limits the number of programs
- Space limits the number of volunteers
- Lack of passive supervision

### Housing

- Limited sight lines lead to observational issues.
- Housing is not to current ACA Standards.
- Overcrowding and lack of assessment space

### Medical

- Limited storage and office space
- Limited exam rooms
- Divided physical plant

### Transport

- Inadequate space at the vehicular sally.
- Court transport space location is good, space allocation and set-up is inadequate.
- Space lacking to plan/coordinate/schedule transports



## Facility Assessment – Overview

### Good Condition

- Structure
- Exterior Enclosure
- Chiller & Boilers
- Civil Components

### Plumbing

- Aging detention fixtures: Not water efficient
- Valves/Fittings: Obsolete/End of life
- Sanitary lines failing: Replace/repair
- Difficulty sealing chase floors to mitigate leaks

### HVAC

- Solar hot water system: Redesign
- Air Handlers: End of life = Replace
- Ductwork: Leaking fiberboard = Replace

### Furnishings

- Detention Furnishings: Worn
- Public Furnishings: Worn

### Exterior Doors

- End of Life = Replace

### Interior Finishes

- Worn and at End of Life
- High Effort: Repaint detention area walls
- High Effort: Upgrade shower and wet area systems/finishes
- Detention Doors/Hardware: End of life

### Elevator Cab Finishes

- End of Life = Replace

### Furnishings

- Detention Furnishings: Worn
- Public Furnishings: Worn

### Electrical

- Upgrade E-Power Transfer Switch
- Replace Branch Panels:
- Lighting: Renovate/Replace with LED
- Inmate Areas: Add AFCI Breakers with panel replacements





## Space Needs Assessment

|                                   | GSF            |
|-----------------------------------|----------------|
| Sheriff's Administration          | 20,333         |
| Records                           | 17,046         |
| Jail Administration               | 18,062         |
| HQ                                | 1,840          |
| Jail Operations                   | 3,256          |
| Jail Operations Support           | 9,295          |
| District Court Probation Services | 15,170         |
| Health Services                   | 10,849         |
| Intake & Release                  | 22,063         |
| Inmate Housing                    | 135,829        |
| Re-Entry                          | 9,642          |
| Adult Transition & Re-entry       | 50,717         |
| Community                         | 28,039         |
| Jail Industries                   | 21,995         |
| Facilities                        | 2,427          |
| Court Suite                       | 10,000         |
| <b>Total</b>                      | <b>366,564</b> |

Existing Building Square Footage = 124,318  
(excluding JWC)



## Trends in 21<sup>st</sup> Century Jails

- Direct Supervision
- Natural Daylight
- Normative/less institutional colors and furniture
- PREA compliance
- Suicide mitigation (physical plant)
- Suicide mitigation (programs and services)
- Smaller housing pods
- Mixed personal visitation modes (non-contact, video, phone)
- Mixed professional visitation modes (non-contact, video, phone)
- Appropriate number of single cells (at least 10%)
- Appropriate number of cells for classification and peaking
- Intake services include medical and mental health screenings
- Assessment process for appropriate classification
- Special needs offender management other than solitary confinement
- Officer training program – appropriate space to provide classroom and physical training
- Outcome accountability
- Program availability and meaningfulness
- Reentry programs - Meaningful community services connections developed during reentry programming
- Leveraging technology appropriately
- Best Practice Based Operational policies and metrics
- Triage & diversion of low level offenders who are mentally ill and/or chemically dependent to appropriate care facilities.



## Modern Jail Spaces - Booking



Serves 802 beds



Serves 1,396 beds



## Clark County – Booking





## Modern Jail Spaces – Intake Housing





## Clark County – Intake Housing





## Modern Jail Spaces – Staff Support Areas





## Clark County – Staff Support Areas







## Modern Jail Spaces – Security and Control





## Clark County – Security and Control



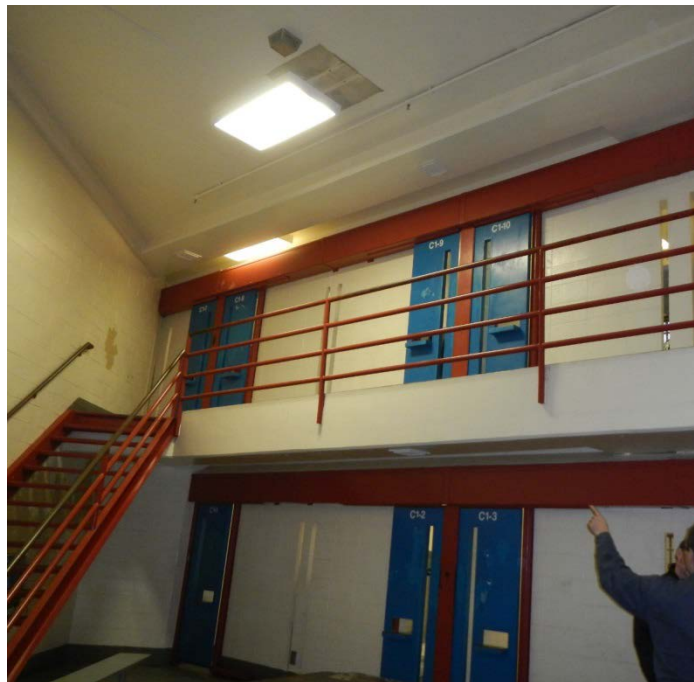


## Modern Jail Spaces - Inmate Housing





## Clark County – Inmate Housing





## Questions & Board Input