

# Freight Rail Dependent Uses

County Council work session— June 13, 2018



Jose Alvarez and Oliver Orjiako, Community Planning

# Agenda

- Freight Rail Dependent Use Code Update
  - Use list
  - Development standards
- Discussion Items
  - Adjacent definition and new map
  - Sewer
  - Environmental review
- Next Steps





# Freight Rail Dependent Uses

---

## Phase II – Charge to advisory committee

The Council has charged the Freight Rail Dependent Use Advisory Committee to consider and recommend development regulations related to freight rail dependent uses to be adopted in 2018. The committee will review the oil classifications in RCW 90.56.010, exclude energy products and chemicals deemed hazardous, build a list of uses from the bulk commodities that make up over 90% of rail freight, and use definition of Freight Rail Dependent Uses in ESB 5517 with particular emphasis on the terms “dependent on” and “makes use” of to refine list.



# Freight Rail Dependent Uses

## Phase II – Title 40 Development Code Amendments

- Use list
- Development standards
- Amendment process for map revisions similar to Rural Center expansion
- Cross-reference other code sections and reference FRDU overlay

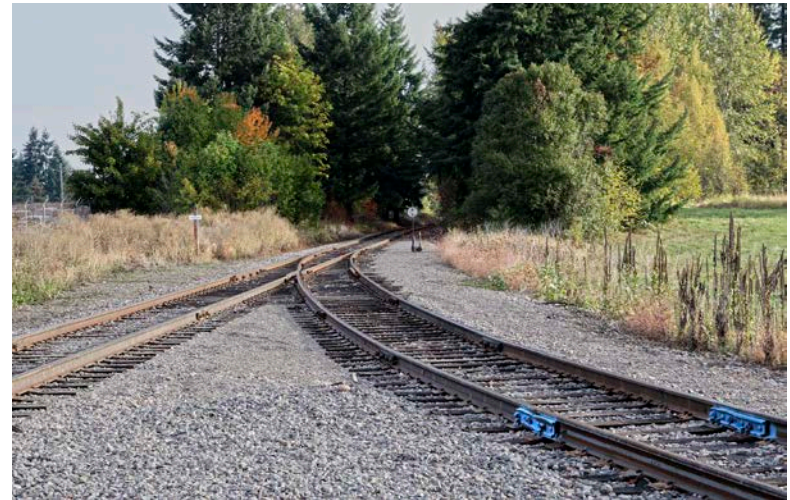


# Discussion Item – Revised Map

---

Proposed a definition of adjacent to include parcels within 1 mile of rail line

- Annual comprehensive plan map amendment
- Additional environmental analysis on areas not currently studied



# Discussion Item – Sewer

---

Proposed amendment to allow sewer outside of a UGA to serve Freight Rail Dependent Use (FRDU) Overlay

- Amend CCC40.370.010 to allow a sewer exception to serve FRDU Overlay
- Amend comprehensive plan policies

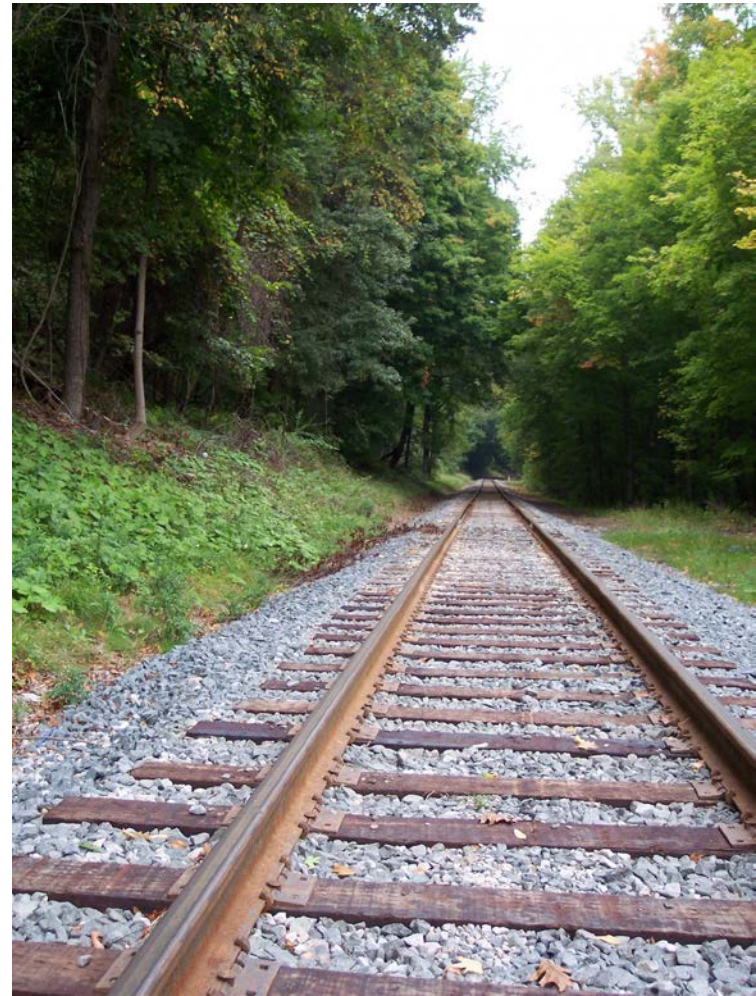


# Discussion Item - Environmental Review

---

The proposal adds new areas for additional study under SEPA:

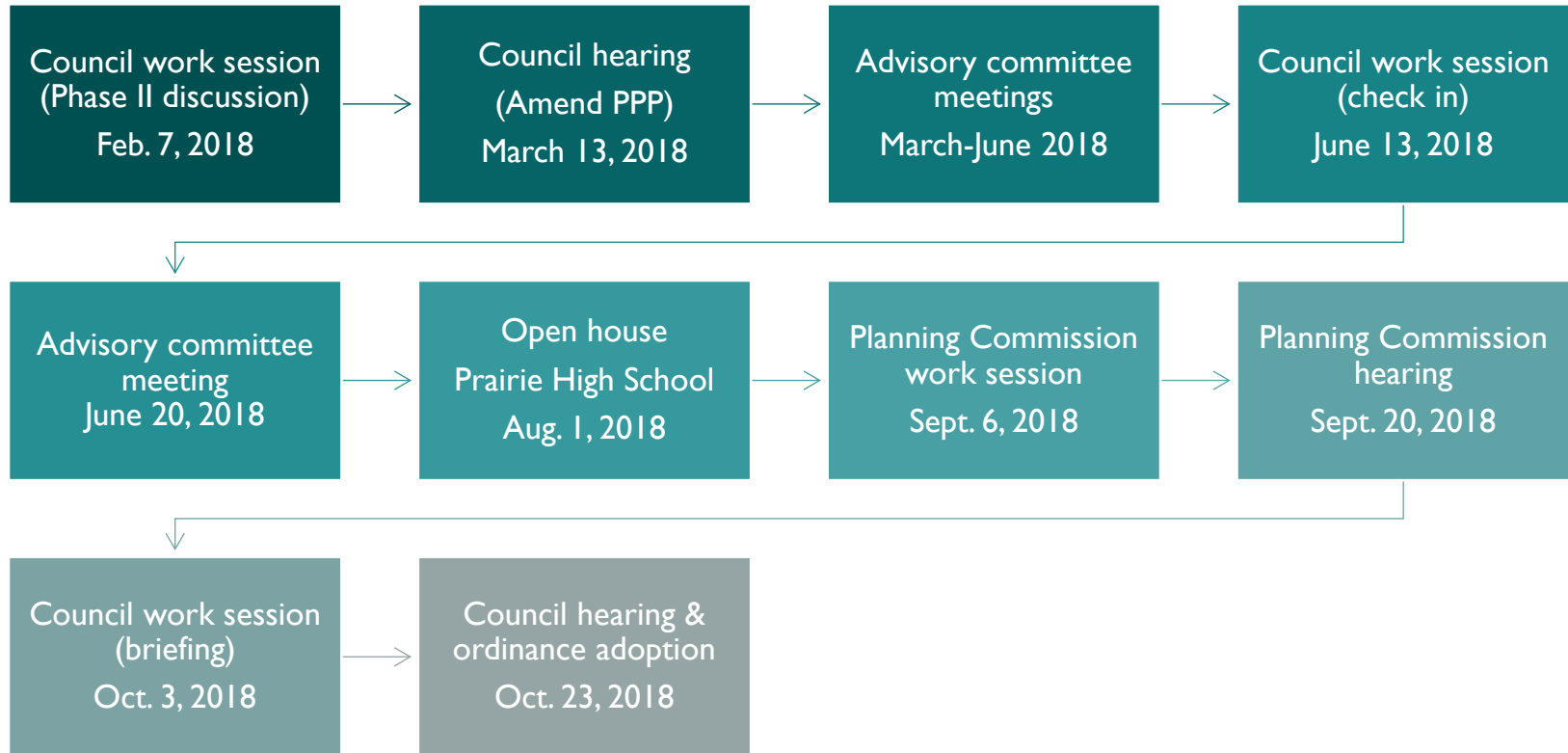
- New overlay map
- New use list items not included in previous work
- Schedule/fiscal note unknown





# Phase II Schedule (does not include discussion items)

---





# Thank you!

## Comments and questions

Clark County Community Planning

Clark County Public Service Center

1300 Franklin Street • PO Box 5000

Vancouver, WA 98666-5000

