

MACKENZIE.

DESIGN DRIVEN | CLIENT FOCUSED

Clark County Sheriff's Office

Preliminary Needs Assessment

Clark County Sheriff's Department

June 6th, 2018





OUR HISTORY. OUR FUTURE. OUR PROMISE.

The values of our founder, Tom Mackenzie, remain the hallmarks of our firm.

Upon this foundation we have, steadily and intentionally, built leaders in architecture, interiors, engineering, and planning, focused on delivering the highest level of design excellence in service to our clients.

This mark is our signature and our promise.

CONTENTS

INTRODUCTION

PROJECT TEAM	III
PROJECT INTRODUCTION	V
EXECUTIVE SUMMARY	VI
NEXT STEPS	X

PROGRAM VALIDATION

PROGRAMMING SUMMARY (OPTION A)	02-03
PROGRAMMING SUMMARY (OPTION B)	02-04
PROGRAMMING SUMMARY (OPTION C)	02-05
SPACE STANDARDS	02-06

PRECEDENT FACILITIES

FACILITY COMPARISON TABLE	03-03
---------------------------	-------

PROJECT COST DEVELOPMENT

COST SUMMARY	04-03
FACILITY COST FORECAST	04-04
PROJECT COST ESTIMATE	04-05

APPENDIX A: NARRATIVES FOR BASIS OF COST

APPENDIX B: COST DOCUMENTS

THIS PAGE INTENTIONALLY LEFT BLANK

INTRODUCTION



THIS PAGE INTENTIONALLY LEFT BLANK

PROJECT TEAM

CLARK COUNTY SHERIFF'S OFFICE

- Chuck E. Atkinds - Sheriff
- Mike Cooke - Undersheriff
- John Chapman - Enforcement Branch Chief Deputy
- Darin Rouhier - Finance Manager



MACKENZIE

- Jeff Humphreys - Project Principal
- Adrienne Clifford - Architectural Designer



COTRUCTION FOCUS INC.

- Steve Gunn - Cost Estimator



THIS PAGE INTENTIONALLY LEFT BLANK

PROJECT INTRODUCTION

The Clark County Sheriff's Department is seeking to relocate part or all of their staff, who have outgrown their current facility. As detailed throughout this report, the replacement facility will be designed in an effort to better meet Clark County's needs and goals; provide a more efficient operational model and layout; better align with the current space demand for the Department; and allow for future staff, facility growth and operational changes.

Clark County selected Mackenzie to assist with an evaluation of existing and future space needs; work with staff to validate the building space-needs program for a replacement facility; and provide a conceptual cost estimate for the building that will be presented to the County for further consideration.

Mackenzie, which was established in 1960 and is based in Portland, Oregon with offices in Vancouver and Seattle WA, provides an integrated design approach to projects, including architecture, structural engineering, landscape architecture, civil engineering, land use planning, transportation planning and interior design services. Mackenzie's Public Projects team specializes in municipal and emergency response facility design, space needs evaluations, and bond campaign assistance. In the past decade, Mackenzie has worked on publicly funded projects in Oregon and Washington for more than 50 counties and municipalities, providing design and engineering services for more than 50 fire facilities, 20 police facilities and seven municipal office buildings.

The project has been conceived as a build-out to meet the 30-year needs of the Sheriff's Office. The new facility would be approximately 47,000 - 105,000 square feet, with the ability to expand the facility to meet the 30-year needs of Clark County. An estimate of anticipated project costs, inclusive of construction, consultant, and owner costs required to fund the project has been provided based on scheme A,B and C.

The information contained within this report provides a detailed overview of Mackenzie's work with the Clark County Sheriff's Office. All steps involved in this process have been documented and organized based on the associated task, and are contained within the pages of this report for the County's consideration. Recommendations for next steps have been outlined at the end of the Executive Summary.

EXECUTIVE SUMMARY

Public facility design, specifically Sheriff's Offices, are unique in that the building and all of its functions are tools integral to the effective and efficient enhancement of department operations and safety. Sheriff Office design focuses on functionality, and its critical role in meeting the stringent requirements associated with protection and security of the building, its staff, and the community served. Jurisdictional, state, and federal criteria for safety, security, and operational procedures drive these requirements and invariably impact design considerations. These criteria ensure that this facility not only is able to improve operational efficiency on a day-to-day basis, but is capable of evolving over the life of the building, resisting and responding to emergency events, providing critical services for the citizens of Clark County, enhancing the built environment of the surrounding area with a strong civic presence, and encouraging investment in the county.

We understand that the Clark County Sheriff's Office is in need of replacing existing facilities that they currently occupy to more suitably accommodate their current staff while better meeting the operational goals of the Clark County Sheriff's Office. The following report encompasses the primary tasks requested by the Clark County Sheriff's Office to determine the feasibility of a replacement facility in meeting the criteria stated above including:

- 1.) Program Validation
- 2.) Cost Development

Process and Methodology

Mackenzie employed programming, communication, consensus-building, and goal-setting techniques to ensure that the final report meets the expectations of the stakeholders involved in the process. Using extensive public project experience and lessons learned on previous projects, the team provided architectural services to meet the project objectives and deliverables.

Mackenzie worked with key staff within the Sheriff's Office throughout the programming process to support and strengthen dialogue between the Design Team and the Agency. The process encompassed the following tasks, each of which have been documented within this report.

Task #1: Program Validation

Mackenzie worked closely with the Clark County Sheriff's Office staff to better understand the current space needs and those projected based on a 30-year growth forecast. Mackenzie developed three programs for three separate potential scenarios that accommodate a variety of the groups included in the programming exercise to determine if consolidating all relevant groups within a new facility or consolidating the minimum number of groups as dictated by the Sheriff's Office should be included. The three scenarios are as follows:

- **Option A** - Combines the following departments/functions into one centralized facility:

- Community Room and Classroom,
- Sheriff Support Functions,
- Enforcement Branch Chief Deputy,
- Special Events,

Patrol,
Investigations,
Special Operations.

The remaining departments would remain in their current facilities.

■ **Option B** - Combines the following departments into one centralized facility:

Community Room,
Classroom,
Information Technology,
Human Resources,
Finance,
Risk,
Sheriff Administration,
Sheriff Headquarters,
Records Division,
Public Disclosure,
Sheriff Support Functions,
Special Events,
Patrol,
Investigations,
Special Operations.

Evidence and Logistics would remain in their current facility.

■ **Option C** - Combines all departments into one centralized facility (Not Corrections):

Community Room,
Classroom,
Information Technology,
Human Resources,
Finance,
Risk,
Sheriff Administration,
Sheriff Headquarters,
Records Division,
Public Disclosure,
Evidence and Logistics,
Sheriff Support Functions,
Special Events,
Patrol,
Investigations,
Special Operations.

The critical needs of the Agency identified during the programming exercise included a Community Room with Emergency Operations Center functions and seating for up to 55 people at tables; a secure classroom for training of up to 75 people at tables; more space for all departments except for the Drug Task Force, which was the only department with more than adequate space for current needs and future growth; back-up power; and workspace available to volunteer staff, among other programmed spaces.

Mackenzie utilized a series of space standards to validate the space allocations. The team developed three program matrixes, one for each Option, which identified the required spaces, their approximate size, and the amenities and equipment within each space. After development of these documents and prior to gaining Agency staff approval, Mackenzie reviewed the findings with Commanders and Department Managers to clarify any questions or comments brought up over the course of the programming process. As a comparison tool, Mackenzie has provided project information on similarly sized Sheriff's Offices and Police facilities.

Evaluation of the spaces needs program determined that a facility of approximately 46,485 to 105,107 square feet would be necessary at the end of the 30-year forecast window, depending on which departments are moved to the new centralized facility. Mackenzie determined that the approximately 91,500 square feet of existing facilities are undersized by about 13%. This number includes the drug task force, which is currently oversized by approximately 44%, or 3,544 sf. Since this space cannot currently be used by any other department, it can be subtracted from the existing area to get a more accurate understanding of the existing area to get a more accurate understanding of the existing facility deficiencies, which are undersized by approximately 16.4% using this method. In conjunction with facility projections, it was determined that the parking provided for staff, operational vehicles, and public parking are greatly undersized. Projections indicate a demand of 65 public parking stalls, 15 staff parking stalls, 47 secure parking stalls, as well as parking for specialty vehicles such as boats, armored vehicles, trailers, jet skis, and gators.

Mackenzie further validated the growth projections and space needs by comparing the program to similar jurisdictions and newly constructed facilities in the region (see Precedent Facilities for trending spreadsheet).

Task #2: Cost Development

Based on the final Program Options, Construction Focus, Inc. has developed a Statement of Probable Cost for the three new facility Options. These cost projections are comprised of the opinion of costs related to the anticipated raw construction costs and general contractor margins based on a publicly funded project requiring prevailing wage rates for construction.

In conjunction with the development of the construction costs, Mackenzie has prepared high level cost forecasts for consultant costs, including architectural/engineering fees, construction management fees, special inspections, surveys, and geotechnical inspections. Mackenzie has also included high level potential owner costs, including fixtures, furnishings and equipment; lockers and shelving; moving costs; and applicable permit fees. A final cost matrix has been prepared that provides a comprehensive look at all anticipated costs associated with the project, summarized to reflect the construction cost, consultant costs, and owner costs.

Cost Summary Table

		OPTION A	OPTION B	OPTION C
CLARK COUNTY SHERIFF	Construction Cost - Building and Site	\$16,980,924	\$23,516,802	\$31,523,016
	TOTAL CONSTRUCTION COST			
	Contingency	\$3,396,185	\$4,703,360	\$6,304,603
	Escalation	\$1,018,855	\$1,411,008	\$1,891,381
	General Conditions	\$1,604,697	\$2,222,338	\$2,978,925
	Profit & Overhead	\$1,380,040	\$1,911,210	\$2,561,876
	Performance Bond and Insurance	\$731,421	\$1,012,942	\$1,357,794
	Sales Tax	\$1,426,398	\$1,975,411	\$2,647,933
	Total Consultant Cost	\$3,122,481	\$4,283,598	\$5,724,091
	Total Owner Cost	\$3,329,164	\$4,020,449	\$5,277,013
	TOTAL PROJECT COST RANGE	\$31,563,767	\$43,081,708	\$57,618,699

NEXT STEPS

Recommendations:

Mackenzie is aware that the Clark County Council has established a commission to investigate the need for replacing or renovating the aging Clark County Jail. We believe that the commission should be provided with this report as potential recommendations on the jail project may be dependent on relocating current services currently housed in the jail facility. A jail replacement or remodel might depend on the adoption of options outlined in this report.

Existing facility observation and previous studies show indications that the Clark County Sheriff's Office is effectively utilizing the existing facilities and available space to the greatest extent possible. However, evaluation of the combined facilities in comparison to the projected needs for a new centralized facility indicate that the Agency's current square footages are insufficient in comparison to modern, recently constructed facilities. Additionally, staffing increases in the coming years will continue to tax the existing facilities and equipment resulting in increased operational, maintenance and leasing costs over multiple facilities, sites and parking lots. Further, the current facilities utilized for the Drug Task Force, Property and Evidence and Major Crimes Unit were not designed or built to serve as essential facilities and, consequently, reflect structures with shorter life spans than those of a purpose-built structure. Based on considerations of square footage requirements for staffing, expanded operational costs, limited life span of existing facilities and inefficiencies in operation, we recognize and recommend consideration of a new centralized facility to be constructed within the next few years. With this in mind, we recommend the following next steps, with timelines reflecting a build out of five years from now.

- Confirm preferred approach option for new centralized facility (Option A, B or C).
- Identify subject sites for consideration.
- Conduct site analysis of subject site(s) under consideration for new Sheriff facility.
- Purchase or develop agreement for purchase of selected property for new Sheriff facility.
- Conduct conceptual design of new sheriff facility and identify development costs.
- Identify funding strategy for selected project strategy.

Considerations:

There are inherent advantages to relocating the Sheriff's Office facilities to a remote site from the existing jail facility in downtown City of Vancouver.

- From an operations standpoint, it will be much more efficient to be located in a centralized facility, rather than having the different functions located in more than five separate buildings for staff, storage of equipment and gear at various locations across the County and in the City of Vancouver.
- Relocated Administration, Records, Property and Evidence and Major Crimes Unit will free up desirable land for redevelopment in the downtown core (including expansion and/or remodel of existing jail).
- Move the Sheriff closer to response/service area and allow for more convenient access from the public to Sheriff staff and services.

PROGRAM VALIDATION



THIS PAGE INTENTIONALLY LEFT BLANK

PROGRAMMING SUMMARY (OPTION A)

NEW HEADQUARTERS

SPACE USE	2019	2049
Public Function & Facility Core	13,481 SF	13,481 SF
Sheriff Support Functions	9,609 SF	9,609 SF
Sheriff Administration	385 SF	385 SF
Special Events	1,495 SF	1,735 SF
Sheriff Patrol Division	6,021 SF	6,021 SF
Sheriff Investigations	8,548 SF	8,923 SF
Sherriff Special Operations	6,011 SF	6,331 SF
TOTAL (includes 25 % Circulation)	45,550 SF	46,485 SF
PARKING		
Public Parking	10,530 SF (65 Stalls)	10,530 SF (65 Stalls)
Secure Sheriff Parking - uncovered	26,000 SF (13 Stalls)	26,000 SF (13 Stalls)
Secure Sheriff Parking - Covered - Carport	13,000 SF (65 Stalls)	13,000 SF (65 Stalls)
Secure Sheriff Parking - Enclosed	5,400 SF (26 Stalls)	5,400 SF (26 Stalls)
TOTAL SITE REQUIREMENTS WITH TWO-STORY BUILDING (includes 185 % Circulation)	118,432 SF	118,908 SF

* See executive summary for additional option descriptions and full program information can be found in Appendix A.

PROGRAMMING SUMMARY (OPTION B)

NEW SHERIFF'S OFFICE (EXCLUDING EVIDENCE)

SPACE USE	2019	2049
Public Function & Facility Core	13,481 SF	13,481 SF
Information Technology	1,500 SF	1,500 SF
Human Resource	1,880 SF	1,880 SF
Finance	1,250 SF	1,250 SF
Risk	325 SF	325 SF
Sheriff Administration	3,398 SF	3,398 SF
Sherriff Headquarters	2,393 SF	2,543 SF
Records Division	6,220 SF	6,220 SF
Public Disclosure	2,440 SF	2,440 SF
Sheriff Support Functions	9,796 SF	9,796 SF
Special Events	1,495 SF	1,735 SF
Sheriff Patrol Division	6,021 SF	6,021 SF
Sheriff Investigations	8,548 SF	8,923 SF
Sheriff Special Operations	6,011 SF	6,331 SF
TOTAL (includes 25 % Circulation)	64,758 SF	65,843 SF
PARKING		
Public Parking	10,530 SF (65 Stalls)	10,530 SF (65 Stalls)
Secure Sheriff Parking - uncovered	46,000 SF (23 Stalls)	46,000 SF (23 Stalls)
Secure Sheriff Parking - Covered - Carport	18,600 SF (93 Stalls)	18,600 SF (93 Stalls)
Secure Sheriff Parking - Enclosed	5,400 SF (26 Stalls)	5,400 SF (26 Stalls)
TOTAL SITE REQUIREMENTS WITH TWO-STORY BUILDING (includes 180 % Circulation)	134,758 SF	135,300 SF

* See executive summary for additional option descriptions and full program information can be found in Appendix A.

PROGRAMMING SUMMARY (OPTION C)

NEW SHERIFF'S OFFICE (INCLUDING EVIDENCE)

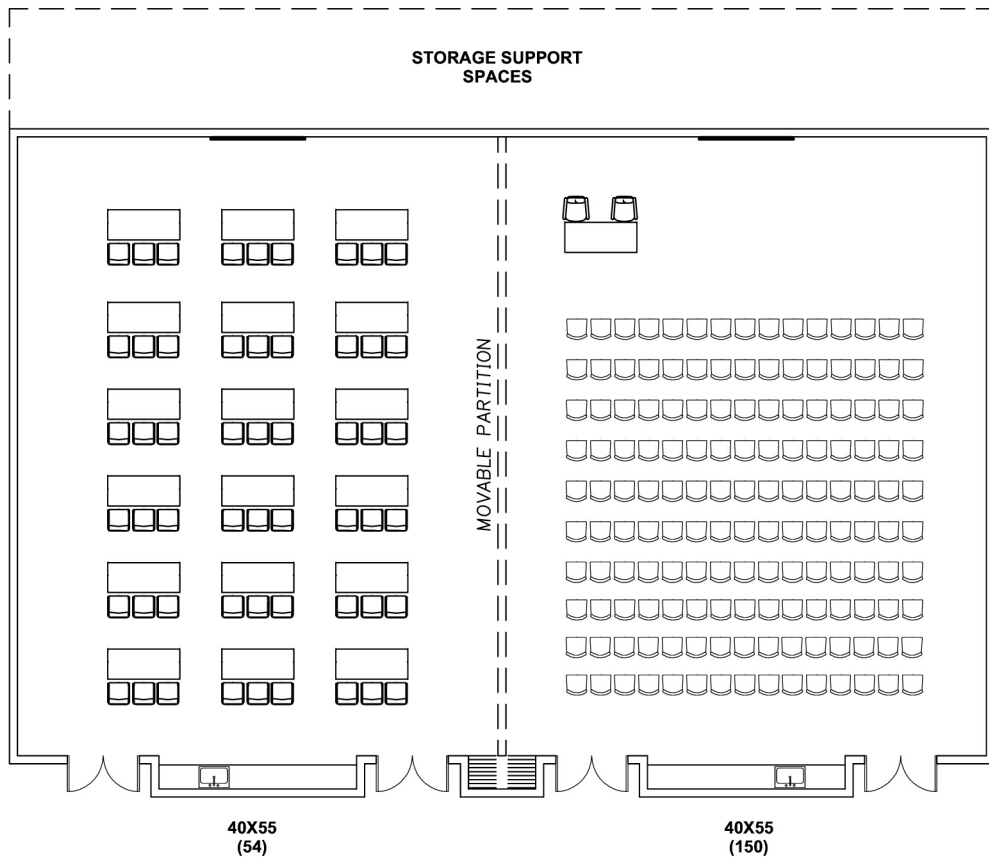
SPACE USE	2019	2049
Public Function & Facility Core	13,481 SF	13,481 SF
Information Technology	1,500 SF	1,500 SF
Human Resource	1,880 SF	1,880 SF
Finance	1,250 SF	1,250 SF
Risk	325 SF	325 SF
Sheriff Administration	3,398 SF	3,398 SF
Sherriff Headquarters	2,393 SF	2,543 SF
Records Division	6,220 SF	6,220 SF
Public Disclosure	2,440 SF	2,440 SF
Evidence & Logistics	39,850 SF	39,850 SF
Sheriff Support Functions	9,796 SF	9,796 SF
Special Events	1,495 SF	1,735 SF
Sheriff Patrol Division	5,436 SF	5,436 SF
Sheriff Investigations	8,548 SF	8,923 SF
Sheriff Special Operations	6,011 SF	6,331 SF
TOTAL (includes 25 % Circulation)	104,022 SF	105,107SF
PARKING		
Public Parking	10,530 SF (65 Stalls)	10,530 SF (65 Stalls)
Secure Sheriff Parking - uncovered	46,000 SF (23 Stalls)	46,000 SF (23 Stalls)
Secure Sheriff Parking - Covered - Carport	18,600 SF (93 Stalls)	18,600 SF (93 Stalls)
Secure Sheriff Parking - Enclosed	5,400 SF (26 Stalls)	5,400 SF (26 Stalls)
TOTAL SITE REQUIREMENTS WITH TWO STORY-BUILDING (includes 195 % Circulation)	183,599 SF	186,550 SF

* See executive summary for additional option descriptions and full program information can be found in Appendix A.

SPACE STANDARDS

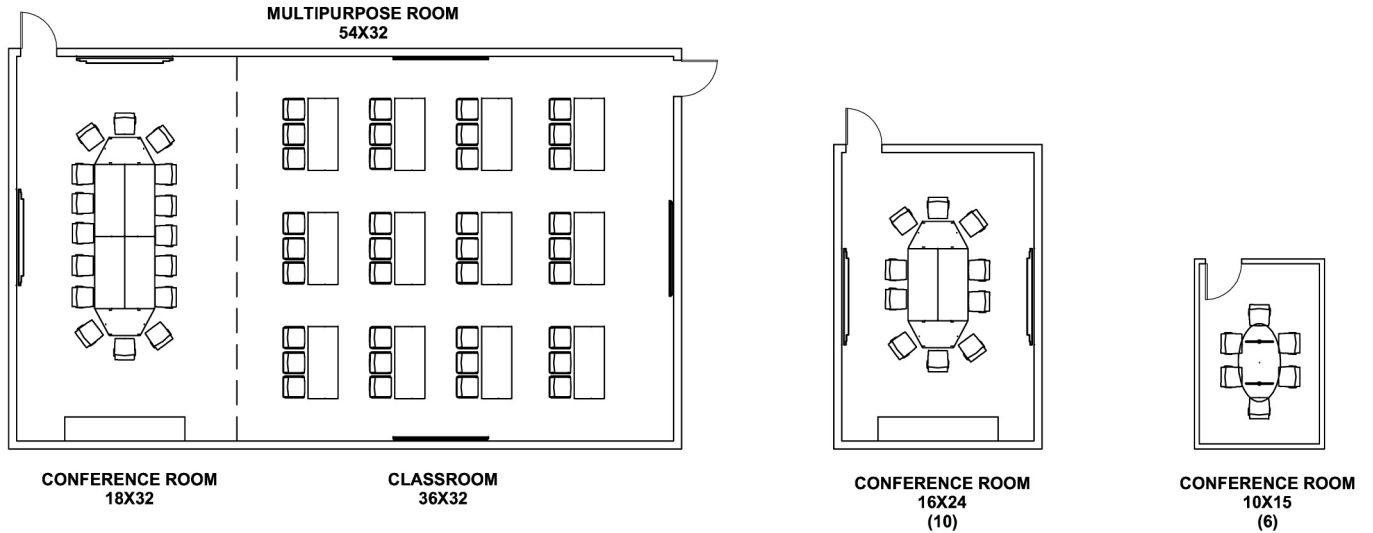
Based on existing emergency response facilities, past experience and general architectural standards, space standards have been developed and depicted to aid in efficiently comparing sizes for offices, support spaces, and primary functions unique to this particular type of facility. These space standards have been utilized in the development and validation of identified program elements.

The following layouts are provided for reference, and to indicate baseline dimensions and room layouts for discussion during the programming process. Actual room dimensions often adjust during the plan development task to account for special adjacencies and other design parameters.



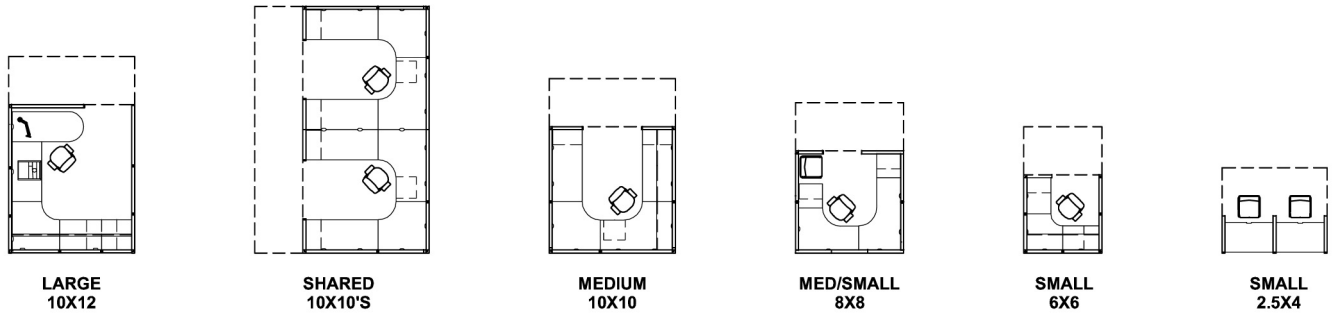
TRAINING CLASSROOM LAYOUTS

Scale 1/16" = 1'-0"



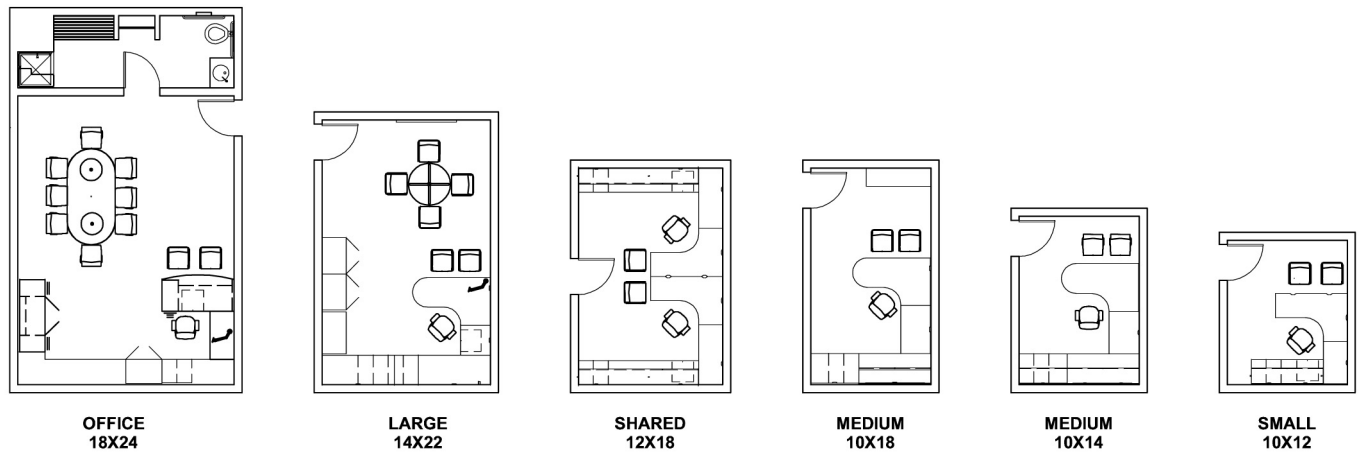
TYPICAL CONFERENCE LAYOUTS

Scale 1/16" = 1'-0"



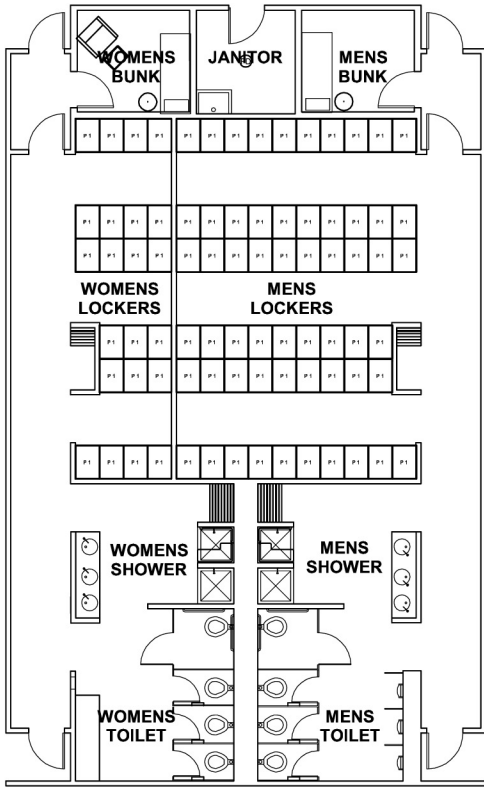
TYPICAL CUBICLE LAYOUTS

Scale 1/16" = 1'-0"

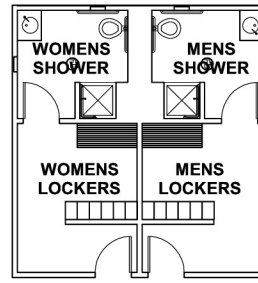


TYPICAL OFFICE LAYOUTS

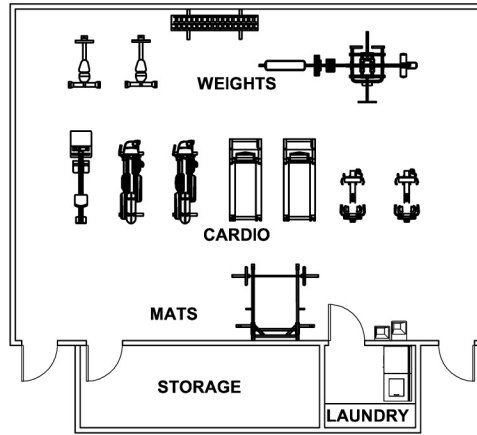
Scale 1/16" = 1'-0"



DUTY LOCKER ROOM / SHOWER ROOM



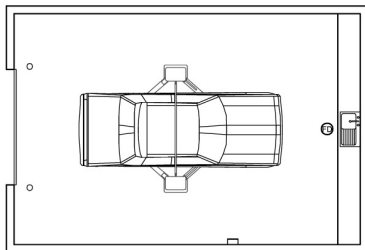
LOCKER ROOM / SHOWER ROOM



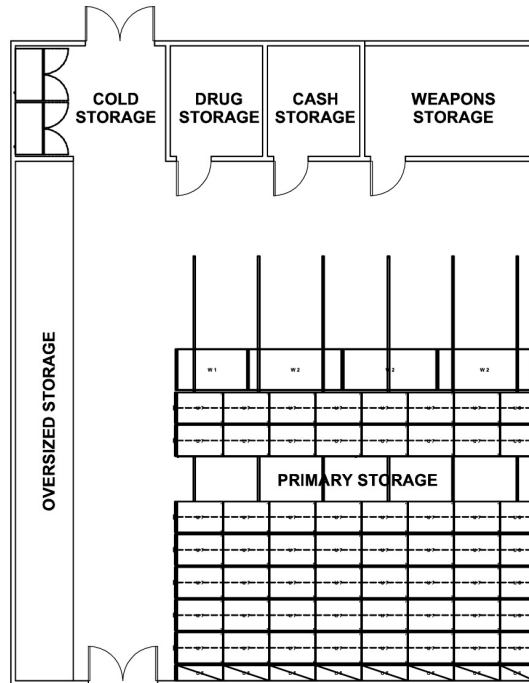
FITNESS

LOCKER / FITNESS LAYOUTS

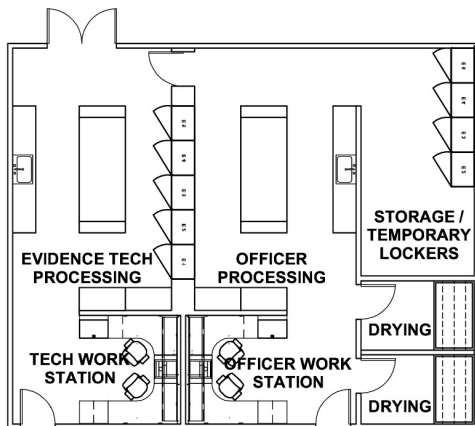
Scale 1/16" = 1'-0"



EVIDENCE VEHICLE GARAGE
20X30



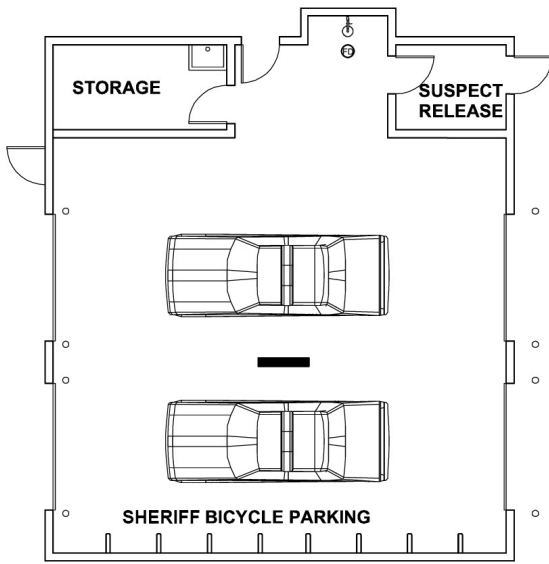
EVIDENCE STORAGE
45X75



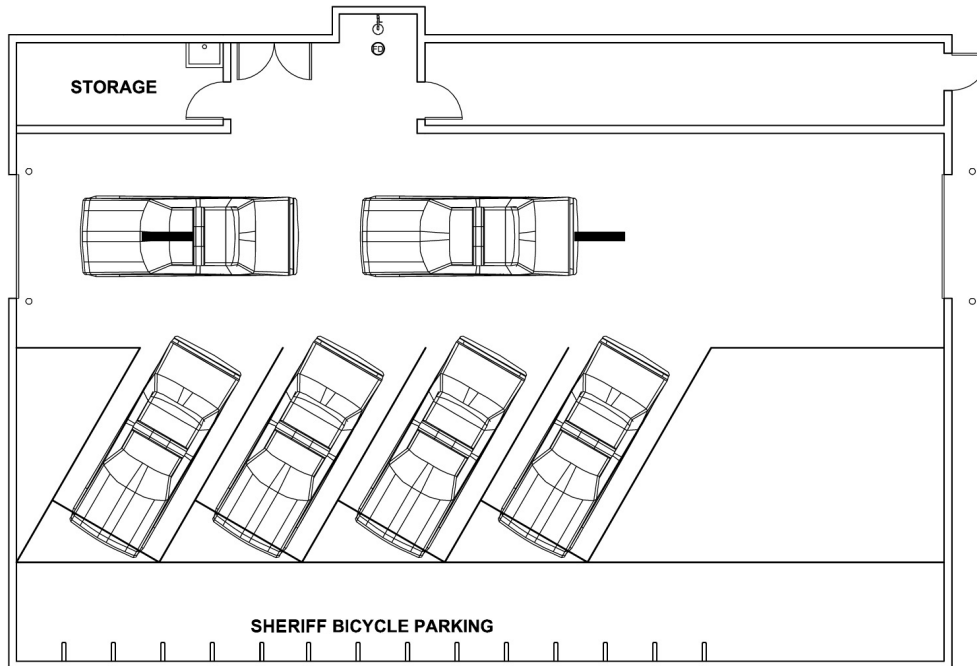
EVIDENCE PROCESSING

PROPERTY / EVIDENCE SPACE LAYOUTS

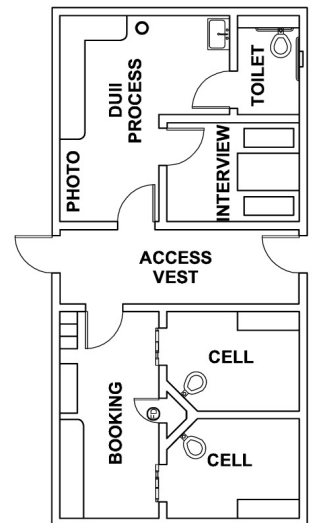
Scale 1/16" = 1'-0"



TWO VEHICLE SALLYPORT
35X40



MULTI VEHICLE SALLYPORT
50X75 (65X75 W/ TWO-WIDE DRIVE)



SUSPECT PROCESSING -
2X HOLDING CELLS

SALLYPORT / SUSPECT PROCESSING LAYOUTS

Scale 1/16" = 1'-0"

THIS PAGE INTENTIONALLY LEFT BLANK

PRECEDENT FACILITIES



THIS PAGE INTENTIONALLY LEFT BLANK

FACILITY COMPARISON TABLE

Sheriff/Police Office	Population Size ^G (2017)	Service Area ^G (Sq Mile)	Construction Cost per SF Construction Cost with Inflation ^I	Sheriff/Police Dept SF	Total Staff	Sworn Officers	SF per Staff	SF per Officer
Clark - Opt A ^{E, F}	474,643	629 mi ²	\$540.22/sf	46,485 sf	155	146	300 sf	318 sf
Clark - Opt B ^{E, F}	474,643	629 mi ²	\$528.19/sf	65,843 sf	328	146	200 sf	451 sf
Clark - Opt C ^{E, F}	474,643	629 mi ²	\$443.53/sf	105,107 sf	337	146	312 sf	720 sf
Clackamas (1999)	412,672	1870 mi ²	INFORMATION NOT AVAILABLE	81,359 sf	446	337	182 sf	241 sf
Washington (1998)	588,957	724 mi ²	INFORMATION NOT AVAILABLE	336,600 sf	586	416	574 sf	809 sf
Albany (2015)	53,503	18 mi ²	\$308 /sf \$357 /sf	35,290 sf ^E	99	67	356 sf	527 sf
Beaverton ^{H, F} (FUTURE)	97,514	19 mi ²	\$424/sf	75,000 sf	276	221	272 sf	339 sf
Bellevue ^{B, C} (2006)	14,444	32 mi ²	\$273 /sf \$490 /sf	93,000 sf	209	173	445 sf	538 sf
Canby (2012)	17,759	4 mi ²	\$229 /sf \$307 /sf	25,000 sf	28	24	893 sf	1042 sf
Eugene (2012)	168,916	44 mi ²	\$257 /sf \$344 /sf	66,000 sf	308	185	214 sf	357 sf
Hillsboro ^{H, F} (FUTURE)	106,894	24 mi ²	\$310 /sf	105,000 sf	341	263	308 sf	399 sf
Springfield ^B (2008)	62,353	16 mi ²	\$205 /sf \$334 /sf	86,935 sf	118	65	737 sf	1,338 sf
Tacoma ^A (2005)	213,418	50 mi ²	\$249 /sf \$470 /sf	92,500 sf ^A	421	378	220 sf	245 sf
Vancouver ^A (2004-2007)	175,673	47 mi ²	\$166 /sf \$329 /sf	93,060 sf ^D	205	184	454 sf	506 sf
West Linn (2014)	26,703	8 mi ²	\$278 /sf \$338 /sf	18,871 sf	35	32	539 sf	589 sf
Average Statistics (All but Clark County)			\$370 /sf	92,385 sf	256	195	433 sf	578 sf

^A City uses precinct model.

^B Facility is a justice center or shared civic facility.

^C Facility is a remodel and/or expansion.

^D Total square footage of all police precinct facilities.

^E Based on Projected Program.

^F Based on most current available estimate

^G Based on <https://www.census.gov/>

^H Currently in design phase

^I 5% per year up to 2018

* Population and staff figures based on 'Uniform Crimes Report - 2011'; compiled by the FBI. <<http://www.fbi.gov/about-us/cjis/ucr/crime-in-the-u.s./2011/crime-in-the-u.s.-2011/tables/table-78-1/view>>

THIS PAGE INTENTIONALLY LEFT BLANK

PROJECT COST DEVELOPMENT



THIS PAGE INTENTIONALLY LEFT BLANK

COST SUMMARY

Following completion of the conceptual design, Mackenzie evaluated cost impacts of the Sheriff facility to meet Department needs for the next 30 years. The following cost summary outlines the estimated total development cost, including construction costs, design costs and owner costs.

Development costs of a project are not limited to construction costs alone and require consideration of other variables. These variables differ between new construction and renovation or expansion, and invariably change from one project to the next depending on site conditions, existing building conditions, building codes, seismic zones and the environment of the construction industry. Differences between estimates arise depending on the design approach, construction costs, and design and engineering costs. Owner costs for furniture, fixtures and equipment are often constant, based on a predetermined budget set by the Department. When a budget is not known, a price per sf allowance is added as a placeholder. New construction can often differ substantially due to the single variable of land acquisition. This cost, coupled with higher construction costs, often leads to this being a more expensive option.

Construction costs reflect the raw costs incurred by a general contractor for overhead and profit, bonding and insurance, securing of materials

		OPTION A	OPTION B	OPTION C
CLARK COUNTY SHERIFF	Construction Cost - Building and Site	\$16,980,924	\$23,516,802	\$31,523,016
	TOTAL CONSTRUCTION COST			
	Contingency	\$3,396,185	\$4,703,360	\$6,304,603
	Escalation	\$1,018,855	\$1,411,008	\$1,891,381
	General Conditions	\$1,604,697	\$2,222,338	\$2,978,925
	Profit & Overhead	\$1,380,040	\$1,911,210	\$2,561,876
	Performance Bond and Insurance	\$731,421	\$1,012,942	\$1,357,794
	Sales Tax	\$1,426,398	\$1,975,411	\$2,647,933
	Total Consultant Cost	\$3,122,481	\$4,283,598	\$5,724,091
	Total Owner Cost	\$3,329,164	\$4,020,449	\$5,277,013
TOTAL PROJECT COST RANGE	\$31,563,767	\$43,081,708	\$57,618,699	

and general construction of the site and building. In addition to the identified construction costs, a design contingency is recommended to ensure dollars are carried through construction for owner changes, design omissions, unforeseen conditions or jurisdictional requirements, among others. A Construction Cost contingency has been calculated in the Project Cost Summaries, shown on the following pages.

Consultant costs reflect the costs incurred for project management and design of the project from concept through construction administration. Though design fees can vary, these costs are generally factored using a fee based on the construction costs for the project. In addition to architectural and engineering services, costs include marketing materials and required services such as topographical surveys and special inspections. A contingency is provided for this category for any unforeseen or additionally requested design services throughout the project.

Owner costs reflect the costs generally incurred directly by the owner throughout the project. This includes all items the owner may wish to contract separately from the general construction of the project. Additional owner-related costs include relocation into the new facility, legal documentation and counsel for project documents and issuances, and jurisdictional fees associated with design review and building permits. A contingency is provided in this category for any unforeseen or undefined costs not currently represented.

The Permit Fees reflect a preliminary estimate of the fees which will be assessed by the governing jurisdiction. This information is based on the information available at the date of the report, and the actual fees may vary at the time of permit application or issuance. For the purposes of this estimate, any fees that are expected to be credited back once the permit is issued have been removed from the summary.

The following project cost estimate examines the construction values of the (3) program options.

FACILITY COST FORECAST

The table below provides a holistic overview of the full cost, with the cost breakdown of Clark County Sheriff Options A-C shown simultaneously for reference.

The details of construction, consultant, and owner cost for each facility can be found in the Project Cost Summary on the next page and Statement of Probable Cost found in the corresponding report.

	SHERIFF OPTION A	SHERIFF OPTION B	SHERIFF OPTION C
Site Req. (SF)	118,908 SF	135,300 SF	186,550 SF
Building Size (SF)	46,485 SF	65,843 SF	105,107 SF
Construction Cost*	\$25,112,122	\$34,777,660	\$46,617,595
Consultant Cost	\$3,122,481	\$4,283,598	\$5,724,091
Owner Cost	\$3,329,164	\$4,020,449	\$5,277,013
Total Project Cost	\$31,563,767	\$43,081,708	\$57,618,699

PROJECT COST ESTIMATE

Clark County Sheriff's Office

Project Cost Summary Comparison

Pre-Design

	NEW BUILDING RANGE			Comments
	Option A	Option B	Option C	
	CFI Probable Cost 4/26/18	CFI Probable Cost 4/26/18	CFI Probable Cost 4/26/18	
Construction Cost of Facility				
Building Hardcost	\$16,980,924	\$23,516,802	\$31,523,016	
Sitework Hardcost	\$0	\$0	\$0	Included in building hardcost above
Right of Way Improvements Hardcost	\$0 ⁵	\$0 ⁵	\$0 ⁵	Excluded
Demolition of Existing Structure	\$0 ⁵	\$0 ⁵	\$0 ⁵	Excluded
Margins				
Contingency	\$3,396,185	\$4,703,360	\$6,304,603	20% Allowance
Escalation	\$1,018,855	\$1,411,008	\$1,891,381	5.00% Allowance 1 year of Escalation
General Conditions	\$1,604,697	\$2,222,338	\$2,978,925	7.5% of GC cost
Overhead & Profit (General Contracting)	\$1,380,040	\$1,911,210	\$2,561,876	6.0% of GC cost
Bonds & Insurance	\$731,421	\$1,012,942	\$1,357,794	3.0% of GC cost
Sales Tax	\$1,426,398 ¹	\$1,975,411 ¹	\$2,647,933 ¹	8.40% Clark County Sales Tax for Hardcosts
Subtotal	\$25,112,122	\$34,777,660	\$46,617,595	
Total Construction Costs	\$25,112,122	\$34,777,660	\$46,617,595	
	\$540.22 /sf	\$528.19 /sf	\$443.53 /sf	
Consultants Costs				
A/E Design and Construction - Base	\$2,511,212	\$3,477,766	\$4,661,759	Allowance
A/E LEED Design and Documentation	\$0	\$0	\$0	Excluded
Reimbursables	\$60,000	\$60,000	\$60,000	Allowance
Owner's Project Manager	\$251,121.22	\$347,776.60	\$466,175.95	1% Allowance
Marketing Materials	\$0	\$0	\$0	Excluded
Topo and Boundary Survey	\$12,000	\$12,000	\$12,000	Allowance
Special Inspections	\$35,000	\$45,000	\$75,000	Allowance
Geotechnical Services	\$30,000	\$35,000	\$40,000	Allowance
Environmental Services	\$0 ⁵	\$0 ⁵	\$0 ⁵	N/A
Hazardous Material Survey/Testing/Mitigation Specs	\$0 ⁵	\$0 ⁵	\$0 ⁵	Excluded
Air-Barrier Testing	\$5,300	\$7,200	\$9,800	Allowance Required in the State of Washington
Arborist	\$0 ⁵	\$0 ⁵	\$0 ⁵	Excluded
Subtotal - Consultants	\$2,904,633	\$3,984,743	\$5,324,735	
Consultants Contingency	\$217,848	\$298,856	\$399,355	7.5% of Consultant costs
Total Consultants Costs	\$3,122,481	\$4,283,598	\$5,724,091	
	\$67.17 /sf	\$65.06 /sf	\$54.46 /sf	
Owner Costs				
Land Acquisition	\$0 ⁵	\$0 ⁵	\$0 ⁵	Excluded
Fixtures, Furniture & Equipment (FF&E)	\$836,730	\$1,185,174	\$1,891,926	\$18.00 per sf Allowance
Appliances	\$20,000	\$25,000	\$30,000	Allowance
Lockers/Storage	\$265,000 ³	\$265,000 ³	\$265,000 ³	Allowance
Shelving (High Density)	\$1,045,000 ⁴	\$1,045,000 ⁴	\$1,045,000 ⁴	Allowance
Fitness Equipment	\$40,000	\$40,000	\$40,000	Allowance
Telephone/Data/AV/Security Equipment	\$92,970	\$131,686	\$210,214	\$2.00 per sf Allowance
LEED Registration	\$0	\$0	\$0	Excluded
Moving Allowance	\$200,000	\$300,000	\$400,000	Allowance
Temporary Facilities	\$0	\$0	\$0	N/A
Permit Fees	\$317,216 ²	\$418,281 ²	\$606,319 ²	Based on % of Construction Costs
Radio Antenna	\$40,000	\$40,000	\$40,000	Allowance
Subtotal - Owner Costs	\$2,856,916	\$3,450,141	\$4,528,459	
Owner Contingency	\$214,269	\$258,761	\$339,634	7.5% of Owner Costs
Sales Tax	\$257,980 ¹	\$311,548 ¹	\$408,920 ¹	8.40% Clark County Sales Tax
Total Owner Costs	\$3,329,164	\$4,020,449	\$5,277,013	
	\$71.62 /sf	\$61.06 /sf	\$50.21 /sf	
Total Project Cost	\$31,563,767	\$43,081,708	\$57,618,699	
	\$679.01 /sf	\$654.31 /sf	\$548.19 /sf	
	NEW BUILDING RANGE			
Building Size (SF):	46,485	65,843	105,107	

Notes

- 1 Assumes Highest Rate in Clark County (Vancouver, Camas, Washougal, Battleground, or Ridgefield)
- 2 Assumes Transportation Impact Fee is applied at the Office rate.
- 3 Assumes 85 personnel lockers and 6 banks of Property/Evidence storage lockers (each bank with 3 lockers tall; assume 2 refrigerated units)
- 4 Assumes 8,000 SF of High Density Storage at Property and Evidence Storage (8 ft tall) and 1,600 SF of High Density Storage (8 ft tall) at Records
- 5 Unknown Site; after site is determined, costs may be associated with this item.

THIS PAGE INTENTIONALLY LEFT BLANK

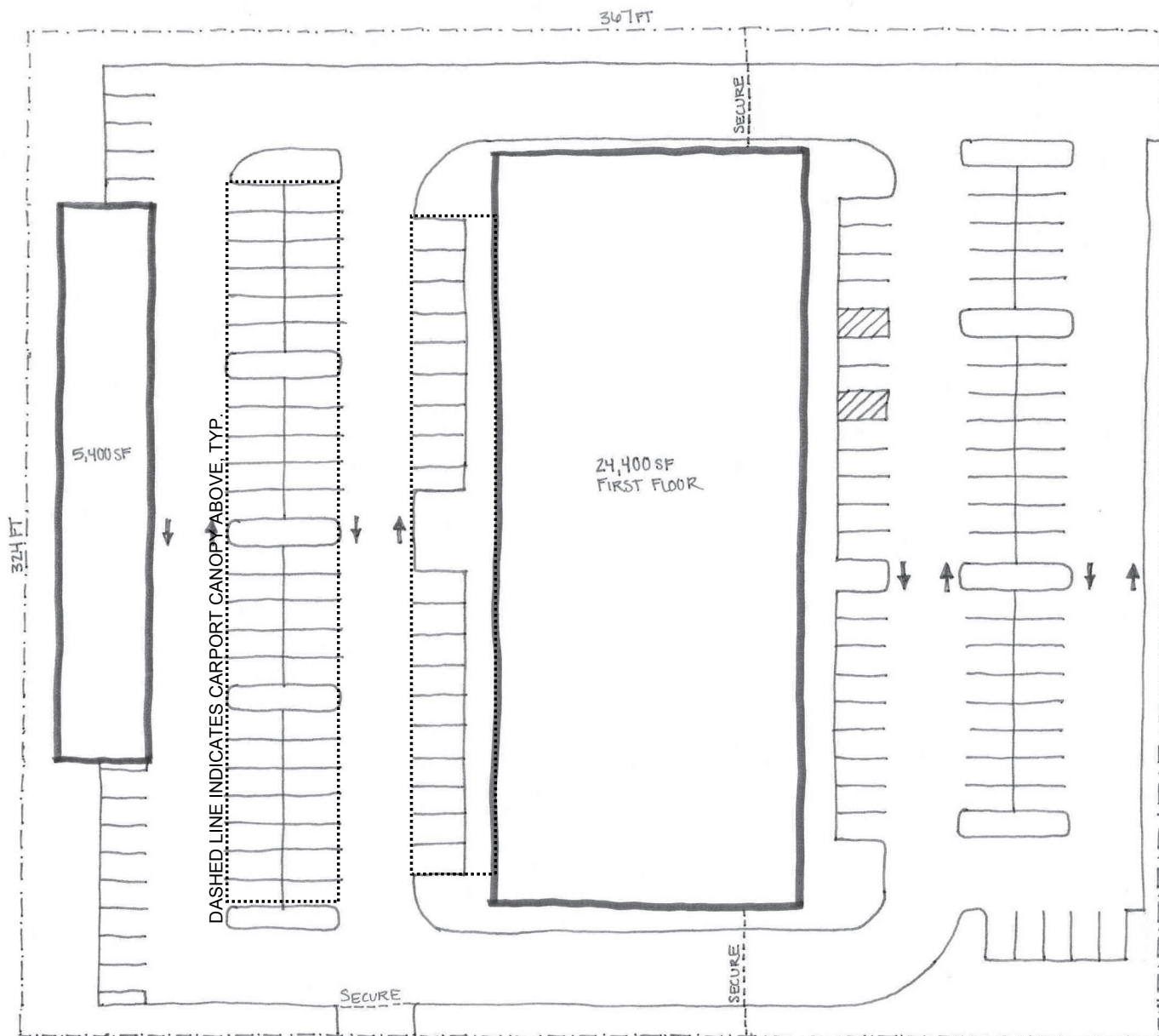
APPENDIX A: NARRATIVES FOR BASIS OF COST

A large, light gray arrow graphic that originates from the top left and points towards the bottom right, spanning most of the page's width and height.

THIS PAGE INTENTIONALLY LEFT BLANK

HYPOTHETICAL SITE PLAN FOR PRICING

OPTION A



Note: Hypothetical site does not take into account zoning requirements for minimum setbacks, open areas, or landscape requirements.

SPACE REQUIREMENTS SUMMARY

OPTION A

Space / Room Use	Staffing Requirements			Space Requirements			Space Size			Total Required Square Footage			Updated 04/16/18	Comments
	Exist	2019	2049	Exist	2019	2049	W	L	Area	Exist	2019	2049		
Department: Clark County Sheriff's Department Space Requirements Summary														
Public Functions & Facility Core	0	0	0							11,969	13,481	13,481	13,481	
Sheriff's Department	208	211	225							22,928	32,069	32,619	33,004	
TOTAL	208	211	225							34,897	45,550	46,100	46,485	

Department: Clark County Sheriff's Department Site Requirements Summary														
Public Functions & Facility Core	0	0	0							11,969	13,481	13,481	13,481	*Staffing Requirements Include Volunteers
Sheriff Support Functions	0	0	0							5,865	9,609	9,609	9,609	
Sheriff Administration	1	1	1							195	385	385	385	
Special Events	70	70	77							754	1,495	1,735	1,735	
Sheriff Patrol Division	88	88	88							2,743	6,021	6,021	6,021	
Sheriff Investigations	21	24	27							11,100	8,548	8,923	8,923	
Sheriff Special Operations	29	29	33							2,466	6,011	6,331	6,331	
Unallocated Existing Areas/Circulation	0	0	0							6,775	0	0	0	
TOTAL	209	212	226							35,092	45,550	46,485	46,485	
TOTAL EXTERIOR REQUIREMENTS										50,855	95,657	95,657	95,657	
TOTAL SITE REQUIREMENTS: One-Story Option										85,947	141,207	142,142	142,142	
TOTAL SITE REQUIREMENTS: Two-Story Option										118,432	118,900	118,900	118,900	

- Existing SF have been calculated from the existing West Precinct and East Precinct plans, provided by Clark County Sheriff's Office

Space / Room Use	Staffing Requirements			Space Requirements			Space Size			Total Required Square Footage			Updated 04/16/18	Comments
	Exist	2019	2049	Exist	2019	2049	W	L	Area	Exist	2019	2049		
Areas of Revision														
Public Functions & Facility Core				0	0	0	0	0	0	0	0	0	0	
Sheriff Support Functions				0	0	0	0	0	0	0	0	0	0	
Special Events				0	0	0	0	0	0	0	0	0	0	
Patrol Division				0	0	0	0	0	0	0	0	0	0	
Sheriff Investigations				0	0	0	0	0	0	0	0	0	0	
Sheriff Special Operations				0	0	0	0	0	0	0	0	0	0	
Unallocated Existing Areas/Circulation				0	0	0	0	0	0	0	0	0	0	
TOTAL SQUARE FOOTAGE (2018 Revisions)													0	

Space / Room Use	Staffing Requirements			Space Requirements			Space Size			Total Required Square Footage			Updated 04/16/18	Comments
	Exist	2019	2049	Exist	2019	2049	W	L	Area	Exist	2019	2049		
Department: Public Functions & Facility Core														
Public Lobby														
Entry Vestibule	0	0	0	0	1	1	14	18	252	140	252	252	252	PUBLIC 911 phone
Public Lobby Waiting Area	0	0	0	1	1	1	30	45	1350	2,000	1,350	1,350	1,350	PUBLIC; 10-25 people; high traffic seating, TV/Monitor adequate lighting (Existing includes all three facilities)
Community Room / EOC	0	0	0	0	1	1	38	60	2280	0	2,280	2,280	2,280	Seating for 50-55 People at Tables; off public lobby; Scheduled Public Use (SECURE) EOC Functions, docking stations; possible temp partition w/ acoustic separation down the middle; kitchenette/sink/coffee
EOC Storage (work stations)	0	0	0	0	1	1	4	30	120	0	120	120	120	SECURE work stations around at perimeter w/ HAM Radio connections/storage; computer docking
Chair Storage (Community Room)	0	0	0	0	1	1	15	20	300	0	300	300	300	PUBLIC; tables and chairs
AV Closet	0	0	0	0	2	2	8	8	64	0	128	128	128	(1) for Community Room and (1) for Classroom
Classroom/Training	0	0	0	0	1	1	38	72	2736	1,900	2,736	2,736	2,736	SECURE Seating for 60-75 People at Tables
Training Storage (Classroom)	0	0	0	0	1	1	15	25	375	150	375	375	375	SECURE; training equipment, tables, chairs, mats
Lobby Information	0	0	0	0	1	1	2	6	12	0	12	12	12	PUBLIC Includes forms, info, translator, resources
Display Area	0	0	0	0	1	1	2	6	12	0	12	12	12	PUBLIC Pamphlets/Plaques/Photos/Etc.
Report Taking Room	0	0	0	0	1	1	10	14	140	320	140	140	140	PUBLIC Dual access from Reception Covert camera & microphone.
Public Restrooms / Men's & Women's / Unisex	0	0	0	2	3	3	12	25	300	400	900	900	900	PUBLIC
Vending Vestibule	0	0	0	0	1	1	10	12	120	105	120	120	120	PUBLIC Includes vending, drinking fountain, pay phone
Group Total	0	0	0		16					5,015	8,725	8,725	8,725	
Facility Core														
Janitor	0	0	0	1	2	2	6	8	48	225	96	96	96	1x per floor; assumes 2 floors
Stairway	0	0	0	2	4	4	12	20	240	900	960	960	960	2x per floor; assumes 2 floors
Elevator	0	0	0	0	1	1	6	8	48	100	48	48	48	1 Secure/public, Front and Rear; access control
Elevator Equipment Room	0	0	0	0	1	1	5	6	30	30	30	30	30	Adjacent Elevator
Mechanical Shaft	0	0	0	0	2	2	5	10	50	215	100	100	100	
Server Room	0	0	0	1	0	0	12	16	192	0	0	0	0	Included in IT program
Electrical Room / Mech. Room	0	0	0	5	2	2	18	20	360	2,850	720	720	720	1x per floor; 4'x4' room for data switches and routers in locked box or chain link fence
Communications Room	0	0	0	1	2	2	5	5	25	70	50	50	50	
Sprinkler Riser Room	0	0	0	1	1	1	7	8	56	170	56	56	56	
Group Total	0	0	0		15					4,560	2,060	2,060	2,060	
SUBTOTAL	0	0	0							9,575	10,785	10,785	10,785	
GENERAL CIRCULATION (25%)										2,394	2,696	2,696	2,696	
TOTAL SQUARE FOOTAGE (Public Functions & Facility Core)										11,969	13,481	13,481	13,481	

Space / Room Use	Staffing Requirements			Space Requirements			Space Size			Total Required Square Footage			Updated 04/16/18	Comments
	Exist	2019	2049	Exist	2019	2049	W	L	Area	Exist	2019	2049		
Department: Support Functions														
Restrooms/Showers/Lockers														
Men's Restroom	0	0	0	2	4	4	12	25	300	485	1,200	1,200	1,200	3x vanities, 3x urinals, 2x toilets; Assumes 2x per floor, with 2 floors; one w/in locker room
Men's Shower Room	0	0	0	1	1	1	10	20	200	320	200	200	200	3x Showers (1 ADA)
Men's Locker Room	0	0	0	0	50	50	2	6	12	1,050	600	600	600	50x Lockers - Includes Records & Admin Staff Includes 10x day-use lockers; weapon lockup
Women's Restroom	0	0	0	2	4	4	12	25	300	485	1,200	1,200	1,200	3x vanities, 3x toilets; Assumes 2x per floor w/2 floors one w/in locker room
Women's Shower Room	0	0	0	1	1	1	10	20	200	250	200	200	200	3x Showers (1 ADA)
Women's Locker Room	0	0	0	1	35	35	2	6	12	300	420	420	420	35x Lockers - Includes Records & Admin Staff Includes 10x day-use lockers; weapon lockup
Unisex Restrooms	0	0	0	5	3	3	8	9	72	275	216	216	216	One per floor (assumes 2 floors) Includes 1x for DTF Suite
First Aid Station	0	0	0	0	2	2	2	2	4	0	8	8	8	Located within each locker room
Boot Polish Station	0	0	0	0	2	2	2	3	6	0	12	12	12	Located within each locker room
Wellness/Nursing/Quiet	0	0	0	0	2	2	10	10	100	0	200	200	200	Adjacent locker rooms 1 per floor, not gender specific
Drying Closet	0	0	0	0	2	2	4	6	24	0	48	48	48	One per locker room
Group Total	0	0	0		106					3,165	4,304	4,304	4,304	
Fitness														
Training / Fitness / Cardio / Weights	0	0	0	1	1	1	35	50	1750	1,500	1,750	1,750	1,750	Weights/Machines; shared with all departments
Fitness Storage	0	0	0	0	1	1	10	15	150	0	150	150	150	Storage of mats/other equipment
Linen Storage	0	0	0	0	0	0	0	0	0	0	0	0	0	Included in Laundry
Laundry	0	0	0	0	1	1	10	5	50	0	50	50	50	W/D closet; near or off of fitness room
Group Total	0	0	0		3					1,500	1,950	1,950	1,950	
Shared														
Mud Room Vestibule	0	0	0	0	1	1	15	25	375	0	375	375	375	Access from secured parking w/ auto slide doors Includes equipment storage cubbies, 50x
Supply Storage	0	0	0	0	1	1	10	15	150	0	150	150	150	Shared Supply Closet
Hazmat Cabinet	0	0	0	0	1	1	2	4	8	0	8	8	8	Cabinet within storage
Break Room	0	0	0	0	1	1	30	30	900	1,200	900	900	900	Room for 6-8x people, various seating options Coffee areas each floor (Smaller Break room for A)
Kitchen / Food Prep / Vending	0	0	0	0	1	1	0	0	0	0	0	0	0	Reff/Freezer, Microwave, oven, D/W, commercial sink stove; Included in Breakroom SF
Common Space (HUB)	0	0	0	0	0	0	20	20	400	0	0	0	0	Included in Breakroom/Circulation
Group Total	0	0	0		5					1,200	1,433	1,433	1,433	
SUBTOTAL	0	0	0							5,865	7,687	7,687	7,687	
GENERAL CIRCULATION (25%)										0	1,922	1,922	1,922	
TOTAL SQUARE FOOTAGE (Support Functions)										5,865	9,609	9,609	9,609	

Space / Room Use	Staffing Requirements			Space Requirements			Space Size			Total Required Square Footage			Updated 04/16/18	Comments
	Exist	2019	2049	Exist	2019	2049	W	L	Area	Exist	2019	2049		
Department: Sheriff Administration														
Sheriff Administration														
Enforcement Branch Chief Deputy	1	1	1	1	1	1	14	22	308	195	308	308	308	L. (Private) Office; room for meeting with up to 4 people
Group Total	1	1	1		1					195	308	308	308	
SUBTOTAL	1	1	1							195	308	308	308	
GENERAL CIRCULATION (25%)										0	77	77	77	
TOTAL SQUARE FOOTAGE (Sheriff Admin)										195	385	385	385	

Space / Room Use	Staffing Requirements			Space Requirements			Space Size			Total Required Square Footage			Updated 04/16/18	Comments
	Exist	2019	2049	Exist	2019	2049	W	L	Area	Exist	2019	2049		
Department: Special Events														
Special Events														
Special Events Commander Office	1	1	1	1	1	1	12	18	216	270	216	216	216	L. Office (Private); small table, guest chairs, desk, credenza
Special Events Storage/Supplies	0	0	0	1	1	1	8	10	80	8	80	80	80	W/Shelving
Recruiting Sergeant	1	1	3	1	1	1	12	18	216	0	216	216	216	M. Office (Private); desk, credenza, guest seating
Recruiting Storage/Supply	0	0	0	1	1	1	8	10	80	0	80	80	80	W/Shelving
Recruitment Conference	0	0	0	0	1	1	10	12	120	0	120	120	120	Near Entrance for easy citizen access
<i>Group Total</i>	2	2	4			5				278	712	712	712	
Outreach/SRO Suite														
Community Outreach Sergeant	1	1	1	1	1	1	10	12	120	0	120	120	120	S. Office (Private); desk, credenza, guest seating
Community Outreach Officers	1	1	4	1	1	4	8	8	64	464	64	256	256	OPEN; (4) workstations @ 8x8 Visitor table and chairs
Community Outreach Storage	0	0	0	0	1	1	10	12	120	12	120	120	120	Storage for Fair Booth, Outreach, Ice Machine, Santa's Posse; Off outreach office & near access points/exits
SRO's	6	6	8	2	2	2	6	6	36	0	72	72	72	S. Cubes; open workspace, transitory work
Volunteers	60	60	60	0	3	3	6	6	36	0	108	108	108	S. Cubes; open workspace Up to 60 volunteers
<i>Group Total</i>	68	68	73			11				476	484	676	676	
SUBTOTAL	70	70	77							754	1,196	1,388	1,388	
GENERAL CIRCULATION (25%)										0	299	347	347	
TOTAL SQUARE FOOTAGE (Special Event Functions)										754	1,495	1,735	1,735	

Space / Room Use	Staffing Requirements			Space Requirements			Space Size			Total Required Square Footage			Updated 04/16/18	Comments
	Exist	2019	2049	Exist	2019	2049	W	L	Area	Exist	2019	2049		
Department: Patrol Division														
Patrol Division														
Patrol Division Commander	1	1	1	1	1	1	12	18	216	252	216	216	216	L.OFFICE; table and chairs for small mtgs Locate near Patrol Sgts and Bullpen Office
Patrol - Sergeants	12	12	12	2	6	6	12	18	216	504	1,296	1,296	1,296	(2) Sergeants per Office Near/Open to Report Writing Bullpen Office
Patrol Officers	75	75	75	0	0	0	0	0	0	0	0	0	0	Space allocated under Report Writing Room 38 per shift
Patrol Special Event Storage	0	0	0	0	1	1	10	10	100	0	100	100	100	Storage for Patrol Special Event Gear
Patrol Briefing Room	0	0	0	1	1	1	30	25	750	610	750	750	750	Equipped w/ audio/video equipment Room for 8-18x people; Table w/ extra chairs
Report Writing Room	0	0	0	8	12	12	8	8	64	835	768	768	768	OPEN (75 Patrol) 12x Shared/shift small workstations; standing capable desks w/ integral file cabinets, storage, docking stations
Patrol Phone Room	0	0	0	0	1	1	5	6	30	0	30	30	30	w/ workstation; for private conversations away from open report writing room
File Area	0	0	0	0	6	6	2	5	10	40	60	60	60	Within Report Writing Room Cabinet space
Large Evidence Room	0	0	0	1	1	1	18	26	468	210	468	468	468	Includes Evidence Lockers and Officer Processing (Options A and B)
Group Total	88	88	88			29				2,451	3,688	3,688	3,688	
Armory/Weapons														
Armory/ammunition/weapons	0	0	0	1	1	1	20	22	440	130	440	440	440	Workstations (x4) w/power bench, storage, gun safe, room for (2) mechanics; tool chests Shared with Special Ops; section off with Chain Link
Ammunition Storage	0	0	0	0	0	0	0	0	0	0	0	0	0	SECURE Located within Armory
Weapons Maintenance	0	0	0	0	0	0	0	0	0	0	0	0	0	SECURE Located adjacent or w/in Armory
Group Total	0	0	0			1				130	440	440	440	
Booking														
Intox / DUI / In Custody Processing	0	0	0	0	1	1	12	18	216	0	216	216	216	
Soft Interview Room	0	0	0	2	4	4	10	10	100	162	400	400	400	Equipped w/ audio/video equipment Hard room w/mtl door w/thumb turn lock; close to detect. One separated from others; not near break room
Unisex Toilet	0	0	0	0	1	1	6	8	48	0	48	48	48	Penal quality fixtures and remote flush
Temporary Animal Services Kennel	0	0	0	0	1	1	5	5	25	0	25	25	25	Water, drainage, hose bib
Group Total	0	0	0			7				162	689	689	689	
SUBTOTAL	88	88	88							2,743	4,817	4,817	4,817	
GENERAL CIRCULATION (25%)										0	1,204	1,204	1,204	
TOTAL SQUARE FOOTAGE (Patrol)										2,743	6,021	6,021	6,021	

Space / Room Use	Staffing Requirements			Space Requirements			Space Size			Total Required Square Footage			Updated 04/16/18	Comments
	Exist	2019	2049	Exist	2019	2049	W	L	Area	Exist	2019	2049		
Department: Investigations														
Major Crimes Unit (MCU)														
Suite; Reports to Investigations Commander														
MCU Sergeant	1	1	1	1	1	1	10	12	120	0	120	120	120	S. Office (Private); desk, computer, files
MCU Detective	7	10	10	7	10	10	8	8	64	0	640	640	640	M/S. Cube; open workstations w/in suite
Supplies/Copy	0	0	0	0	1	1	8	10	80	0	80	80	80	Copy Machine, supplies, cabinets, countertops
MCU Evidence Tech Station	1	1	1	0	1	1	12	18	216	0	216	216	216	W/in MCU suite
MCU Digital Evidence Detective Workstation	1	1	1	0	1	1	12	16	192	0	192	192	192	Counters around perimeter; workspace; extra cooling
MCU Evidence Processing/Storage	0	0	0	1	1	1	26	30	780	0	780	780	780	W/in MCU suite
MCU Interview Rooms	0	0	0	2	2	2	10	10	100	0	200	200	200	Audio/Visual; soft interview; 3-4 people
MCU Briefing	0	0	0	1	1	1	16	25	400	0	400	400	400	7-10 People at one time
MCU Storage	0	0	0	0	1	1	8	8	64	0	64	64	64	Storage for Food, Bottled Water, etc. for up to 72 hours in emergency; small closet with lock
Existing MCU Building Area	0	0	0	0	0	0	0	0	0	3,100	0	0	0	Existing Building SF; includes all areas above and circulation
Group Total	10	13	13			19					3,100	2,692	2,692	2,692
Drug Task Force														
Investigations Commander	1	1	1	1	1	1	14	22	308	0	308	308	308	L. Office; small meeting capabilities
Financial Investigators	2	2	2	2	2	2	14	22	308	0	616	616	616	L. Office; small meeting capabilities; storage; paper
Detectives	5	5	8	5	5	8	10	10	100	0	500	800	800	Open Office with M. Cubes (10x10)
Sergeant	1	1	1	1	1	1	10	18	180	0	180	180	180	M. Office w/visitor chairs
Administrative Assistants	2	2	2	2	2	2	10	14	140	0	280	280	280	M. Office
K9 Training Room	0	0	0	1	1	1	12	12	144	0	144	144	144	Space for K-9 training, exercises, and gear
Conference/Briefing Room	0	0	0	1	1	1	18	40	720	0	720	720	720	20 -24 people seated; up to 30-40 people sitting/standing
Vehicle Maintenance Storage	0	0	0	1	1	1	10	12	120	0	120	120	120	Car maintenance, tools, batteries
Washer/Dryer	0	0	0	1	1	1	5	10	50	0	50	50	50	W/D Closet
Faraday Box	0	0	0	0	0	0	2	2	4	0	0	0	0	Box can be located within evidence, set on a counter no special room needed
Evidence Lockers	0	0	0	1	3	3	2	3	6	0	18	18	18	Lockers for Temporary Evidence Storage
Cash Safe (Evidence)	0	0	0	1	1	1	2	3	6	0	6	6	6	Safe for Cash Storage
Evidence Processing	0	0	0	1	1	1	14	20	280	0	280	280	280	Workspace for evidence processing; adjacent evidence lockers
Break Room/Kitchen	0	0	0	1	1	1	15	18	270	0	270	270	270	Need separate break space from the rest of the Sheriff's Office; kitchen with fridge/freezer, microwave, commercial sink; tables and chairs
Gear Storage	0	0	0	1	1	1	10	12	120	0	120	120	120	secure cabinets
Secure File Storage	0	0	0	1	1	1	12	15	180	0	180	180	180	Secure; sep alarm;
Archive Storage	0	0	0	1	1	1	10	12	120	0	120	120	120	Secure; sep alarm; 10 years of records
Storage	0	0	0	1	1	1	10	12	120	0	120	120	120	Adjacent to Secure File Storage; stats, bills, etc. Additional Storage
Server	0	0	0	0	0	0	0	0	0	0	0	0	0	(1) Rack- Included with IT in Sheriff's Office Server Room
Copy/Print/Supply	0	0	0	1	1	1	10	10	100	0	100	100	100	Needs to be in secure location; no after hours access by cleaning staff
Mailboxes	0	0	0	1	14	14	1	1	1	0	14	14	14	14x mailboxes
Existing Facilities	0	0	0	0	0	0	0	0	0	8,000	0	0	0	All existing DTF spaces above area included here. (Includes circulation)
Group Total	11	11	14			43					8,000	4,146	4,446	4,446
SUBTOTAL	21	24	27								11,100	6,838	7,138	7,138
GENERAL CIRCULATION (25%)											0	1,710	1,785	1,785
TOTAL SQUARE FOOTAGE (Investigations)											11,100	8,548	8,923	8,923

Space / Room Use	Staffing Requirements			Space Requirements			Space Size			Total Required Square Footage			Updated 04/16/18	Comments
	Exist	2019	2049	Exist	2019	2049	W	L	Area	Exist	2019	2049		
Department: Special Operations														
Tactical Detectives Unit (TDU) / UASI														
<i>Near IT</i>														
Tactical Detectives Unit (TDU) Detectives	4	4	8	4	4	8	8	8	64	683	256	512	512	M./S. Cubes in TDU Suite
Tactical Detectives Unit (TDU) Sergeant	1	1	1	1	1	1	10	14	140	170	140	140	140	M. Office (Private)
Tactical Detectives Unit (TDU) Storage	0	0	0	1	1	1	14	20	280	0	280	280	280	Electronics; storage for cameras, tools, equipment
Tactical Detectives Unit (TDU) Server	0	0	0	0	0	0	10	10	100	169	0	0	0	1x rack; included in IT Server Space
TDU Server Workstation	0	0	0	1	1	1	12	16	192	0	192	192	192	M/S Cube for workspace off of Server Room Extra A/C; adjacent to IT and Server Room
Urban Areas Security Initiative (UASI/Drones)	0	0	0	1	1	1	10	12	120	0	120	120	120	Computer storage for video equipment, drones; tied to TDU storage
Group Total	5	5	9			12					1,022	988	1,244	1,244
K-9 Unit														
<i>Reports to Patrol Sergeant</i>														
K-9 Master Handler	1	1	1	1	1	1	10	12	120	0	120	120	120	S. Office; workstation and storage for K-9 equip
K-9 Workstation	3	3	3	2	2	2	8	8	64	0	128	128	128	M./S. Cube
K-9 Records and Equipment	0	0	0	1	1	1	12	20	240	260	240	240	240	K-9 Storage; equipment; K-9 grooming station shelves for dog gear, food storage
K-9 Drying Room	0	0	0	0	1	1	5	5	25	0	25	25	25	Drying room for bite suits
K-9 Kennel	0	0	0	2	2	2	5	5	25	0	50	50	50	(2) Kennels
Group Total	4	4	4			7				260	563	563	563	
Traffic														
<i>Suite with Marine and CVE</i>														
Traffic Investigators	4	4	4	4	4	4	8	8	64	0	256	256	256	M./S. Cube; open workstations; combined with Marine and CVE in Suite
Traffic Sergeant	1	1	1	1	1	1	10	14	140	0	140	140	140	M. Office (Private)
Group Total	5	5	5			5				0	396	396	396	
Marine														
<i>Suite with Traffic and CVE</i>														
Marine Deputies	4	4	4	4	4	4	8	8	64	0	256	256	256	M./S. Cubes; open workstations combined with Traffic and CVE in Suite
Marine Sergeant	1	1	1	1	1	1	10	14	140	0	140	140	140	M. Office (Private)
Marine Storage	0	0	0	1	1	1	10	10	100	0	100	100	100	Storage for equipment; leaflets, flyers, stickers, life jackets, buoys
Group Total	5	5	5			6				0	496	496	496	
<i>*Marine is currently off site; no existing areas are known.</i>														
Commercial Vehicles (CVE)														
<i>Suite with Marine and Traffic</i>														
Commercial Vehicles (CVE)	1	1	1	1	1	1	8	8	64	0	64	64	64	M./S. Cube; open workstation combined with Traffic and Marine in Suite (spends most of time in field)
Group Total	1	1	1			1				0	64	64	64	
SWAT, TEMS, Negotiations														
Special Weapons and Tactics (SWAT) Office	1	1	1	1	1	1	10	14	140	0	140	140	140	M. Office (Private)
SWAT Workstation	1	1	1	1	1	1	8	8	64	0	64	64	64	M./S. Cube; open workstation off of Special Ops
Special Weapons and Tactics (SWAT) Storage	0	0	0	1	1	1	10	12	120	0	120	120	120	Equipment storage
Negotiators and TEMS	6	6	6	2	2	2	8	8	64	0	128	128	128	M/S Cubes; away from patrol Report Writing; suite Cubes shared between Negotiators and TEMS
Shared Conference Room/ Training for Tact. Medics	0	0	0	0	1	1	18	26	468	0	468	468	468	Conf Room for 10 people; counter space
Training Records	0	0	0	0	1	1	8	8	64	0	64	64	64	Workstation for storage of training records
Group Total	8	8	8			7				0	984	984	984	

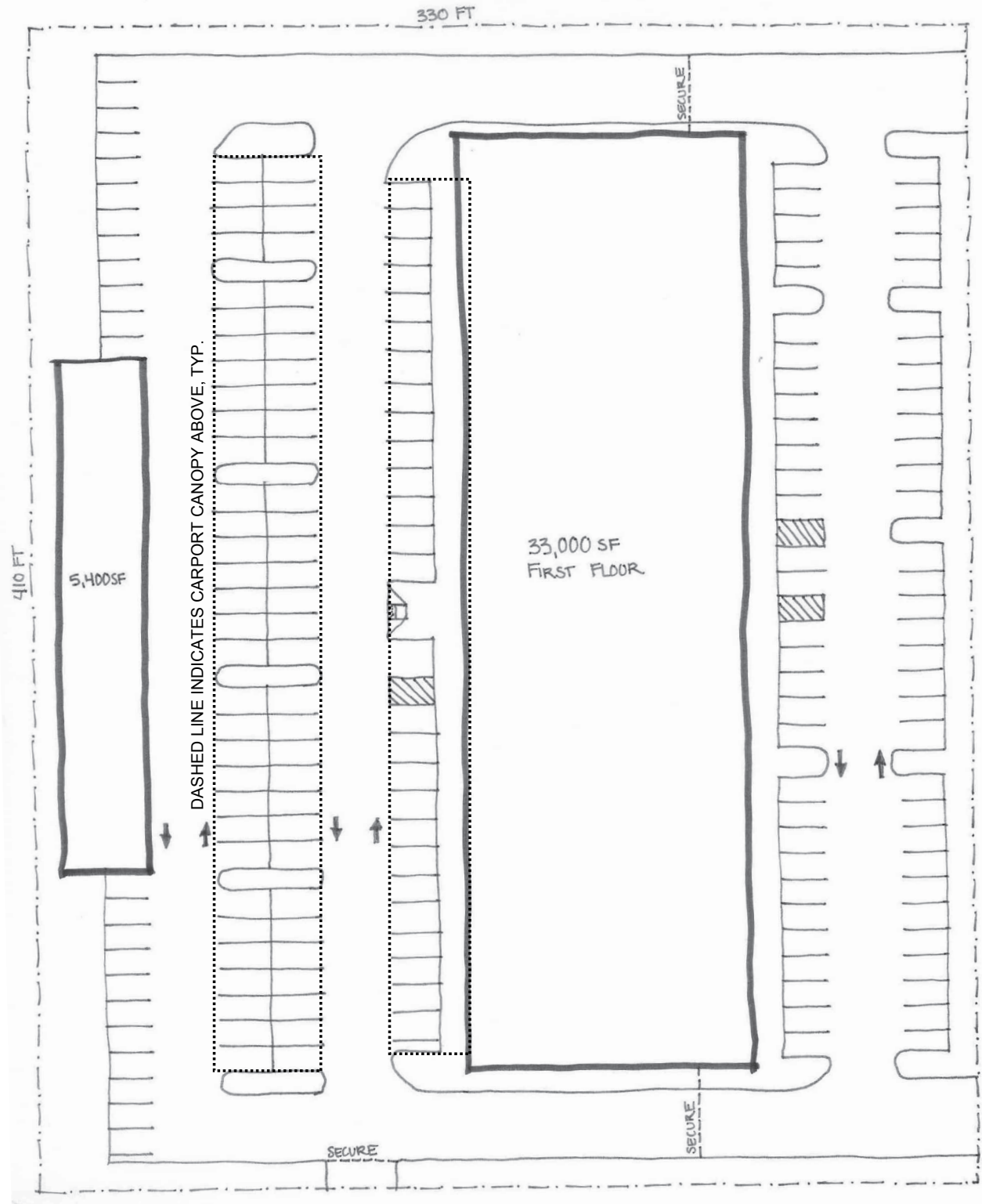
Space / Room Use	Staffing Requirements			Space Requirements			Space Size			Total Required Square Footage			Updated 04/16/18	Comments
	Exist	2019	2049	Exist	2019	2049	W	L	Area	Exist	2019	2049		
Special Operations Commander														
Special Operations Commander	1	1	1	1	1	1	14	22	308	285	308	308	308	L. Office (Private) desk; space for small table/chairs; storage
<i>Group Total</i>	1	1	1			1				285	308	308	308	
Special Ops Support Spaces														
MRT Storage	0	0	0	1	1	1	8	16	128	64	128	128	128	Storage for chemical agents, magazine, less lethal ammo, etc.
Air Support Unit (ASU)	0	0	0	0	0	0	0	0	0	0	0	0	0	No Space Needs
Copy/Supply/Work	0	0	0	1	2	2	12	16	192	370	384	384	384	Copy Machine; workspace; counter w/ island; cabinets x2 locations; share w/ Patrol and Events
Armory	0	0	0	0	0	0	20	22	440	50	0	0	0	Workstations (x4) w/power bench, storage, gun safe, room for (2) mechanics; tool chests
Conference Room	0	0	0	1	1	1	16	30	480	405	480	480	480	Shared and Included in Patrol 10-12 People
Explosives	0	0	0	2	2	2	3	3	9	10	18	18	18	Share w/Patrol and Events Located in MRT Storage
<i>Group Total</i>	0	0	0			6				899	1,010	1,010	1,010	Share w/Patrol and Events
SUBTOTAL	29	29	33							2,466	4,809	5,065	5,065	
GENERAL CIRCULATION (25%)										0	1,202	1,266	1,266	
TOTAL SQUARE FOOTAGE (Special Operations)										2,466	6,011	6,331	6,331	

Space / Room Use	Staffing Requirements			Space Requirements			Space Size			Total Required Square Footage			Updated 04/16/18	Comments	
	Exist	2019	2049	Exist	2019	2049	W	L	Area	Exist	2019	2049			
Department: Unallocated Existing Spaces/Circulation															
These spaces are located on the floor plans given, but existing use is unknown and needs to be confirmed.															
Unallocated Existing Spaces															
East Precinct Unallocated Spaces	0	0	0	1	1	1	0	0	0	0	0	0	0	0	Not applicable for Option A
East Precinct Existing Circulation	0	0	0	1	1	1	0	0	0	0	0	0	0	0	Not applicable for Option A
Existing West Precinct Building Circulation (Patrol, Special Ops, and Special Events)	0	0	0	0	0	0	0	0	0	6,775	0	0	0	0	Existing Circulation Area at West Precinct
<i>Group Total</i>	0	0	0							6,775	0	0	0		
SUBTOTAL	0	0	0							6,775	0	0	0		
GENERAL CIRCULATION (25%)										0	0	0	0		
TOTAL SQUARE FOOTAGE (Unknown Spaces)										6,775	0	0	0		

Space / Room Use	Staffing Requirements			Space Requirements			Space Size			Total Required Square Footage			Updated 04/16/18	Comments	
	Exist	2019	2049	Exist	2019	2049	W	L	Area	Exist	2019	2049			
Department: Site Requirements															
Public Parking															
Public Parking - Sheriff's Office	0	0	0	0	30	30	9	18	162	0	4,860	4,860	4,860	PUBLIC	
Public Parking - Community Rm/Training	0	0	0	0	35	35	9	18	162	0	5,670	5,670	5,670	PUBLIC	
Group Total						65				0	10,530	10,530	10,530		
Secured Parking															
Personal Vehicle Parking	0	0	0	5	15	15	10	20	200	1,000	3,000	3,000	3,000	Conduit for future elect. charging station Prefer secured staff parking; enough for shift overlaps	
DTF Personal Parking	0	0	0	20	20	20	10	20	200	4,000	4,000	4,000	4,000	Secure; provide 2-3 min. covered spaces	
Squad Vehicle Parking (Traffic, Marine, Patrol)	0	0	0	30	43	43	10	20	200	6,000	8,600	8,600	8,600	squad vehicle spaces; Sheltered parking Power, WIFI required	
TDU Cool Cars	0	0	0	4	4	4	10	20	200	800	800	800	800	Covered/Enclosed is preferable	
MCU Van	0	0	0	1	1	1	10	20	200	200	200	200	200	Secure, enclosed	
MRT Van	0	0	0	1	1	1	10	20	200	200	200	200	200	Secure; doesn't need to be covered Power required	
Bearcat Armored Vehicle Parking	0	0	0	2	2	2	14	24	336	672	672	672	672	Secure/Enclosed; power required	
Boat Storage (Including Inflatables)	0	0	0	4	4	4	14	35	490	1,960	1,960	1,960	1,960	Secure/Enclosed	
Gator Storage	0	0	0	4	4	4	8	12	96	384	384	384	384	Need (2) flatbed trailer spaces Secure/Covered; can be stored outside	
Jet Ski Storage	0	0	0	2	2	2	14	6	84	168	168	168	168	Secure/Enclosed; includes jet ski trailer; 2 on one trailer side by side	
Mobile Response Team Trailer Parking	0	0	0	1	1	1	12	30	360	360	360	360	360	Power required	
Search and Rescue Team Trailer Parking	0	0	0	1	1	1	12	30	360	360	360	360	360	Power required	
Speed Trailer	0	0	0	1	1	1	12	25	300	300	300	300	300	Power required	
Explorer's Trailer	0	0	0	1	1	1	12	25	300	300	300	300	300	Covered; can be stored outside	
DTF Raid Van	0	0	0	1	1	1	10	20	200	200	200	200	200	Secure/Covered; power required	
K-9 Equipment Trailer	0	0	0	1	1	1	12	25	300	300	300	300	300	Covered; can be stored outside	
Bomb Trailer	0	0	0	1	1	1	12	20	240	240	240	240	240	Power required; dual axle heavy tank w/arm; covered currently stored at VPD West;	
Bomb Truck (Chevy Truck)	0	0	0	1	1	1	10	20	200	200	200	200	200		
Emergency Generator	0	0	0	0	1	1	12	20	240	0	240	240	240	240	Includes 4'-0" clearances, concrete pad req'd
Trash/Recycling	0	0	0	1	2	2	10	20	200	200	400	400	400	400	Verify trash requirements w/ provider
Break Room Patio	0	0	0	0	1	1	10	15	150	0	150	150	150	150	Secure enclosed space off Break Room
Group Total	0	0	0			108				17,844	23,034	23,034	23,034		
SUBTOTAL	0	0	0			173				17,844	33,564	33,564	33,564		
GENERAL CIRCULATION (185%)										33,011	62,093	62,093	62,093		
TOTAL SQUARE FOOTAGE (Site Requirements)										50,855	95,657	95,657	95,657		

HYPOTHETICAL SITE PLAN FOR PRICING

OPTION B



Note: Hypothetical site does not take into account zoning requirements for minimum setbacks, open areas, or landscape requirements.

SPACE REQUIREMENTS SUMMARY

OPTION B

Space / Room Use	Staffing Requirements			Space Requirements			Space Size			Total Required Square Footage			Updated 04/16/18	Comments
	Exist	2019	2049	Exist	2019	2049	W	L	Area	Exist	2019	2049		
Department: Clark County Sheriff's Department Space Requirements Summary														
Public Functions & Facility Core	0	0	0							11,969	13,481	13,481	13,481	
Sheriff's Department	283	300	327							44,609	51,276	52,361	52,361	
TOTAL	283	300	327							56,578	64,758	65,843	65,843	

Department: Clark County Sheriff's Department Site Requirements Summary														
Public Functions & Facility Core	0	0	0							11,969	13,481	13,481	13,481	
Information Technology	4	4	4							633	1,500	1,500	1,500	
Human Resources	4	5	5							1,030	1,880	1,880	1,880	
Finance	8	8	8							1,097	1,250	1,250	1,250	
Risk	1	2	2							110	325	325	325	
Sheriff Administration	7	7	7							1,905	3,398	3,398	3,398	
Sheriff Headquarters	16	18	19							800	2,393	2,543	2,543	
Records Division	27	36	40							3,852	6,220	6,220	6,220	
Public Disclosure	7	8	16							639	2,440	2,440	2,440	
Sheriff Support Functions	0	0	0							5,865	9,796	9,796	9,796	
Special Events	70	70	77							754	1,495	1,735	1,735	*Staffing Requirements Include Volunteers
Sheriff Patrol Division	88	88	88							2,743	6,021	6,021	6,021	
Sheriff Investigations	21	24	27							11,100	8,548	8,923	8,923	
Sheriff Special Operations	30	30	34							2,466	6,011	6,331	6,331	
Unallocated Existing Areas/Circulation	0	0	0							11,615	0	0	0	
TOTAL BUILDING	283	300	327							56,578	64,758	65,843	65,843	
TOTAL EXTERIOR REQUIREMENTS										49,963	102,379	102,379	102,379	
TOTAL SITE REQUIREMENTS: Single-Story Option										106,541	167,137	168,222	168,222	
TOTAL SITE REQUIREMENTS: Two-Story Option										134,758	135,300	135,300	135,300	

- Existing SF have been calculated from the existing West Precinct and East Precinct plans, provided by Clark County Sheriff's Office

Space / Room Use	Staffing Requirements			Space Requirements			Space Size			Total Required Square Footage			Updated 04/16/18	Comments
	Exist	2019	2049	Exist	2019	2049	W	L	Area	Exist	2019	2049		
Areas of Revision														
Public Functions & Facility Core				0	0	0	0	0	0	0	0	0	0	
Information Technology				0	0	0	0	0	0	0	0	0	0	
Human Resources				0	0	0	0	0	0	0	0	0	0	
Finance				0	0	0	0	0	0	0	0	0	0	
Risk Manager				0	0	0	0	0	0	0	0	0	0	
Sheriff Administration				0	0	0	0	0	0	0	0	0	0	
Sheriff Headquarters				0	0	0	0	0	0	0	0	0	0	
Records Division				0	0	0	0	0	0	0	0	0	0	
Sheriff Public Disclosure				0	0	0	0	0	0	0	0	0	0	
Sheriff Support Functions				0	0	0	0	0	0	0	0	0	0	
Special Events				0	0	0	0	0	0	0	0	0	0	
Patrol Division				0	0	0	0	0	0	0	0	0	0	
Sheriff Investigations				0	0	0	0	0	0	0	0	0	0	
Sheriff Special Operations				0	0	0	0	0	0	0	0	0	0	
TOTAL SQUARE FOOTAGE (2018 Revisions)													0	0

Space / Room Use	Staffing Requirements			Space Requirements			Space Size			Total Required Square Footage			Updated 04/16/18	Comments
	Exist	2019	2049	Exist	2019	2049	W	L	Area	Exist	2019	2049		
Department: Public Functions & Facility Core														
Public Lobby														
Entry Vestibule	0	0	0	0	1	1	14	18	252	140	252	252	252	PUBLIC 911 phone
Public Lobby Waiting Area	0	0	0	1	1	1	30	45	1350	2,000	1,350	1,350	1,350	PUBLIC; 10-25 people; high traffic seating, TV/Monitor adequate lighting (Existing includes all three facilities)
Community Room / EOC	0	0	0	0	1	1	38	60	2280	0	2,280	2,280	2,280	Seating for 50-55 People at Tables; off public lobby; Scheduled Public Use (SECURE) EOC Functions, docking stations; possible temp partition w/ acoustic separation down the middle; kitchenette/sink/coffee
EOC Storage (work stations)	0	0	0	0	1	1	4	30	120	0	120	120	120	SECURE work stations around at perimeter w/ HAM Radio connections/storage; computer docking
Chair Storage (Community Room)	0	0	0	0	1	1	15	20	300	0	300	300	300	PUBLIC; tables and chairs
AV Closet	0	0	0	0	2	2	8	8	64	0	128	128	128	(1) for Community Room and (1) for Classroom
Classroom/Training	0	0	0	0	1	1	38	72	2736	1,900	2,736	2,736	2,736	SECURE Seating for 60-75 People at Tables
Training Storage (Classroom)	0	0	0	0	1	1	15	25	375	150	375	375	375	SECURE; training equipment, tables, chairs, mats
Lobby Information	0	0	0	0	1	1	2	6	12	0	12	12	12	PUBLIC Includes forms, info, translator, resources
Display Area	0	0	0	0	1	1	2	6	12	0	12	12	12	PUBLIC Pamphlets/Plaques/Photos/Etc.
Report Taking Room	0	0	0	0	1	1	10	14	140	320	140	140	140	PUBLIC Dual access from Reception Covert camera & microphone.
Public Restrooms / Men's & Women's / Unisex	0	0	0	2	3	3	12	25	300	400	900	900	900	PUBLIC
Vending Vestibule	0	0	0	0	1	1	10	12	120	105	120	120	120	PUBLIC Includes vending, drinking fountain, pay phone
Group Total	0	0	0			16				5,015	8,725	8,725	8,725	
Facility Core														
Janitor	0	0	0	1	2	2	6	8	48	225	96	96	96	1x per floor; assumes 2 floors
Stairway	0	0	0	2	4	4	12	20	240	900	960	960	960	2x per floor; assumes 2 floors
Elevator	0	0	0	0	1	1	6	8	48	100	48	48	48	1 Secure/public, Front and Rear; access control
Elevator Equipment Room	0	0	0	0	1	1	5	6	30	30	30	30	30	Adjacent Elevator
Mechanical Shaft	0	0	0	0	2	2	5	10	50	215	100	100	100	
Server Room	0	0	0	1	0	0	12	16	192	0	0	0	0	Included in IT program
Electrical Room / Mech. Room	0	0	0	5	2	2	18	20	360	2,850	720	720	720	1x per floor; 4'x4' room for data switches and routers in locked box or chain link fence
Communications Room	0	0	0	1	2	2	5	5	25	70	50	50	50	
Sprinkler Riser Room	0	0	0	1	1	1	7	8	56	170	56	56	56	
Group Total	0	0	0			15				4,560	2,060	2,060	2,060	
SUBTOTAL	0	0	0							9,575	10,785	10,785	10,785	
GENERAL CIRCULATION (25%)										2,394	2,696	2,696	2,696	
TOTAL SQUARE FOOTAGE (Public Functions & Facility Core)										11,969	13,481	13,481	13,481	

Space / Room Use	Staffing Requirements			Space Requirements			Space Size			Total Required Square Footage			Updated 04/16/18	Comments
	Exist	2019	2049	Exist	2019	2049	W	L	Area	Exist	2019	2049		
Department: Information Technology														
<i>Near TDU</i>														
Information Technology														
IT Technician Offices	3	3	3	3	3	3	10	12	120	390	360	360	360	S. Office
Information Systems Mgr.	1	1	1	1	1	1	10	14	140	243	140	140	140	M.OFFICE
Server Room	0	0	0	0	1	1	12	20	240	0	240	240	240	OPEN; 4 racks with clearances and small work space need generator/UPS support (sep from County Telecom) Extra heavy heating/cooling/power (1) TDU rack, (1) bodycam rack, (1) dept rack; (1) DTF rack
Storage	0	0	0	0	1	1	10	10	100	0	100	100	100	Storage for extra parts/equipment
Work Room	0	0	0	0	1	1	14	20	280	0	280	280	280	Workspace for equipment, tools; heavy cooling
Supply	0	0	0	0	1	1	8	10	80	0	80	80	80	Built-ins, Counter
Copy/Print	0	0	0	0	0	0	0	0	0	0	0	0	0	Shared space
<i>Group Total</i>	4	4	4			8				633	1,200	1,200	1,200	
SUBTOTAL	4	4	4							633	1,200	1,200	1,200	
GENERAL CIRCULATION (25%)										0	300	300	300	
TOTAL SQUARE FOOTAGE (IT)										633	1,500	1,500	1,500	

Space / Room Use	Staffing Requirements			Space Requirements			Space Size			Total Required Square Footage			Updated 04/16/18	Comments
	Exist	2019	2049	Exist	2019	2049	W	L	Area	Exist	2019	2049		
Department: Human Resources														
<i>Can share a suite with Finance and Risk</i>														
Human Resources														
HR Manager	1	1	1	1	1	1	12	18	216	100	216	216	216	L. (Private) Office; small table with chairs
HR Support Positions	1	2	2	1	2	2	10	12	120	620	240	240	240	L. Cubes x2 in open work area
HR Analyst	2	2	2	2	2	2	10	14	140	125	280	280	280	M. (Private) Offices
HR Secure File	0	0	0	1	1	1	10	20	200	185	200	200	200	SECURE; Room for 16-18 Lateral File Cabinets
Group Total	4	5	5			6					1,030	936	936	936

Shared/Support Spaces														
Supplies	0	0	0	1	1	1	8	8	64	0	64	64	64	Shared with Finance & Risk
Work Room/Copy/Print	0	0	0	1	1	1	10	12	120	0	120	120	120	Shared with Finance and Risk; counter space; storage;
Conference	0	0	0	1	1	1	16	24	384	0	384	384	384	Shared with Finance & Risk (10 people)
Group Total	0	0	0			3				0	568	568	568	
SUBTOTAL	4	5	5							1,030	1,504	1,504	1,504	
GENERAL CIRCULATION (25%)										0	376	376	376	
TOTAL SQUARE FOOTAGE (HR)										1,030	1,880	1,880	1,880	

Department: Finance														
<i>Can share a suite with HR and Risk</i>														
Finance														
Workstations	6	6	6	6	6	6	10	12	120	850	720	720	720	L. Cubes in Open Office
Finance Manager	1	1	1	1	1	1	10	14	140	122	140	140	140	M.OFFICE
Assistant Manager	1	1	1	1	1	1	10	14	140	65	140	140	140	M.OFFICE
Active Archive Storage	0	0	0	0	0	0	0	0	0	60	0	0	0	SECURE; Shelves included in HR File above
Archive (Records)	0	0	0	0	0	0	0	0	0	0	0	0	0	Included in Records
Group Total	8	8	8			8				1,097	1,000	1,000	1,000	

Shared/Support Spaces														
Supplies	0	0	0	1	1	1	0	0	0	0	0	0	0	Shared with HR & Risk (Included above)
Work Room	0	0	0	1	1	1	0	0	0	0	0	0	0	Shared with HR & Risk (Included above)
Conference	0	0	0	1	1	1	0	0	0	0	0	0	0	Shared with HR & Risk (Included above)
Group Total	0	0	0			3				0	0	0	0	
SUBTOTAL	8	8	8							1,097	1,000	1,000	1,000	
GENERAL CIRCULATION (25%)										0	250	250	250	
TOTAL SQUARE FOOTAGE (Finance)										1,097	1,250	1,250	1,250	

Space / Room Use	Staffing Requirements			Space Requirements			Space Size			Total Required Square Footage			Updated 04/16/18	Comments	
	Exist	2019	2049	Exist	2019	2049	W	L	Area	Exist	2019	2049			
Department: Risk Management															
<i>Shares a Suite with HR and Finance</i>															
Risk Management															
Risk Manager	1	1	1	1	1	1	10	14	140	110	140	140	140	M. (Private) Office	
Risk Work Station	0	1	1	0	1	1	10	12	120	0	120	120	120	S. OFFICE (Private or Cube)	
Group Total	1	2	2			2				110	260	260	260		
Shared/Support Spaces															
Supplies	0	0	0	1	1	1	0	0	0	0	0	0	0	0	Shared with HR & Risk (Included above)
Work Room	0	0	0	1	1	1	0	0	0	0	0	0	0	0	Shared with HR & Risk (Included above)
Conference	0	0	0	1	1	1	0	0	0	0	0	0	0	0	Shared with HR & Risk (Included above)
Group Total	0	0	0			3				0	0	0	0	0	
SUBTOTAL	1	2	2							110	260	260	260		
GENERAL CIRCULATION (25%)										0	65	65	65		
TOTAL SQUARE FOOTAGE (Risk)										110	325	325	325		

Space / Room Use	Staffing Requirements			Space Requirements			Space Size			Total Required Square Footage			Updated 04/16/18	Comments
	Exist	2019	2049	Exist	2019	2049	W	L	Area	Exist	2019	2049		
Department: Sheriff Administration														
<i>Suite</i>														
Sheriff Administration														
Administrative Lobby/Waiting	0	0	0	1	1	1	15	18	270	170	270	270	270	Security Glass; seating
Sheriff	1	1	1	1	1	1	14	22	308	260	308	308	308	L. (Private) Office; room for meeting with up to 4 people
Undersheriff	1	1	1	1	1	1	18	26	468	205	468	468	468	XL. (Private) Office; room for meeting with up to 8 people
Enforcement Branch Chief Deputy	1	1	1	1	1	1	14	22	308	195	308	308	308	L. (Private) Office; room for meeting with up to 4 people
Civil Branch Chief Deputy	1	1	1	1	1	1	14	22	308	215	308	308	308	L. (Private) Office; room for meeting with up to 4 people
Receptionist	2	2	2	2	2	2	10	12	120	120	240	240	240	OPEN (2x) Large workstations, near lobby/waiting
Administrative Assistant	1	1	1	1	1	1	10	12	120	300	120	120	120	S. (Private) Office; centrally located; near Sheriff and Undersheriff
Administrative Copy/Print/Work Room	0	0	0	1	1	1	12	18	216	175	216	216	216	Shared Copy/Work/Print space
Administrative Conference Room	0	0	0	1	1	1	16	30	480	265	480	480	480	Meeting space for 12-16 people
Group Total	7	7	7				10			1,905	2,718	2,718	2,718	
SUBTOTAL	7	7	7							1,905	2,718	2,718	2,718	
GENERAL CIRCULATION (25%)										0	680	680	680	
TOTAL SQUARE FOOTAGE (Sheriff Admin)										1,905	3,398	3,398	3,398	
Department: Sheriff Headquarters														
Internal Affairs														
<i>Suite</i>														
Internal Affairs Sergeants	2	2	2	1	2	2	12	18	216	82	432	432	432	L. Office (Private) desk, computer, files Locate off Patrol Sgt Bullpen Office
Internal Affairs Support Staff	0	1	1	0	1	1	8	8	64	225	64	64	64	M./S. Cube for support staff Open to work area
Supplies/Copy/Work	0	0	0	0	1	1	8	10	80	90	80	80	80	Copy Machine, supplies, cabinets, countertops
IA Interview Room	0	0	0	0	1	1	10	15	150	0	150	150	150	Conference table, 4-6 people; audio/visual - video recording
Group Total	2	3	3				5			397	726	726	726	
CALEA														
<i>Suite - Near IA or Training</i>														
CALEA Sergeant/PIO	1	1	1	1	1	1	10	12	120	0	120	120	120	S. Office (Private) Desk, computer, files, TV w/ access to Cable
CALEA Support	1	1	1	1	1	1	8	8	64	0	64	64	64	M./S. Cube (open workstation)
Group Total	2	2	2				2			0	184	184	184	
Training and Backgrounds														
<i>Suite</i>														
Backgrounds Investigators	3	4	4	3	4	4	10	12	120	275	480	480	480	S. Office (Private)
Training Sergeants	2	2	3	2	2	3	10	12	120	64	240	360	360	S. Office (Private)
Training Support	1	1	1	1	1	1	8	8	64	64	64	64	64	M./S. Cube (open workstation)
Training Workstations	6	6	6	6	6	6	2.5	4	10	0	60	60	60	Small desks w/computers where students can set their things down for the day, check emails; report writing style open workstations
Group Total	12	13	14				14			403	844	964	964	
Shared Support Spaces														
Copy/Print/Work	0	0	0	2	2	2	8	10	80	0	160	160	160	Shared and dispersed at convenient locations for HQ
Group Total	0	0	0				2			0	160	160	160	
SUBTOTAL	16	18	19							800	1,914	2,034	2,034	
GENERAL CIRCULATION (25%)										0	479	509	509	
TOTAL SQUARE FOOTAGE (Headquarters)										800	2,393	2,543	2,543	

Space / Room Use	Staffing Requirements			Space Requirements			Space Size			Total Required Square Footage			Updated 04/16/18	Comments
	Exist	2019	2049	Exist	2019	2049	W	L	Area	Exist	2019	2049		
Department: Sheriff Records Division														
<i>Currently also oversees jail records; if Sheriff's office moves, Jail records to remain in building.</i>														
Records														
Public Reception (Service Counter) and Lobby	0	2	2	1	1	1	15	30	450	0	450	450	450	OPEN; (2) service counters/windows sep for privacy Secure w/ bullet resistant glazing & paneling ADA counter; 2x stations (with computers) SECURE Window document pass through
Criminal Records Supervisor	3	5	6	3	3	3	10	12	120	82	360	360	360	S. OFFICE or L. CUBE Windows to observe records and front desk
Criminal Records Support Specialists	17	18	18	6	6	6	8	8	64	2,365	384	384	384	OPEN (6 people per shift) 8x8 work stations with layout area, bulpen
Warrants Supervisor	1	2	2	1	2	2	10	12	120	0	240	240	240	S. OFFICE or L. CUBE Windows to observe warrants and front desk
Warrants Support Specialists	4	6	8	4	8	8	8	8	64	0	512	512	512	OPEN 8x8 work stations with layout area, bulpen
Records Program Manager	1	1	1	1	1	1	10	18	180	110	180	180	180	M. OFFICE (Private)
Case Management Sergeant	1	1	1	1	1	1	10	12	120	180	120	120	120	M. OFFICE (Private); off of Records
Copy/Print/Work Room	0	0	0	1	1	1	12	18	216	225	216	216	216	(2) copiers, work table, storage Shared with Public Disclosure
Records Storage - Confidential	0	0	0	1	1	1	12	14	168	0	168	168	168	Compact shelving; off of Archive with sep. secure access climate controlled
Records Storage - Archive	0	0	0	1	1	1	40	40	1600	890	1,600	1,600	1,600	Compact shelving; key card access; climate control
Records Storage - Active	0	0	0	1	1	1	12	25	300	0	300	300	300	Digital records; same room as active; includes finance High density storage
Archivist	0	1	2	1	1	1	12	18	216	0	216	216	216	Shared Office with up to 2 workstations
Supply Storage	0	0	0	1	1	1	8	10	80	0	80	80	80	Adjacent to Files, Copy and Reception. Shared with Public Disclosure
Small Shared Conf. Space	0	0	0	0	1	1	10	15	150	0	150	150	150	Shift Briefing/Conference Space for Supervisors Up to 6 people; Shared w/ public disclosure
Group Total	27	36	40			29					3,852	4,976	4,976	4,976
SUBTOTAL	27	36	40								3,852	4,976	4,976	4,976
GENERAL CIRCULATION (25%)											0	1,244	1,244	1,244
TOTAL SQUARE FOOTAGE (Records)											3,852	6,220	6,220	6,220

Department: Public Disclosure														
<i>Enclosed Suite, near Records</i>														
Public Disclosure														
Public Disclosure Manager Office	1	1	1	1	1	1	10	14	140	125	140	140	140	M. Office (Private) Guest seating; book shelf, overhead cabinets, printer, side table
Supervisor	1	1	1	1	1	1	10	12	120	64	120	120	120	S. Office (Private) desk; guest chair; book-shelf; cabinets
Program Assistant	1	1	2	1	1	1	12	18	216	140	216	216	216	Shared Office for future growth; desk, guest chairs, bookshelf, cabinets
Support Specialist II	4	2	4	4	2	2	12	18	216	260	432	432	432	L. Office (Shared); desks, guest chairs, cabinets, copier 2 people per office
Support Specialist III	0	3	3	0	2	2	12	18	216	0	432	432	432	L. Office (Shared); desks, guest chairs, cabinets, copier 2 people per office
Body Cam Technician	0	0	5	0	1	1	18	24	432	0	432	432	432	L. Office (Shared); equipment stor; work space; desks storage; cabinets; guest chairs; 5x Cubes
Storage/Copy/Print	0	0	0	0	1	1	0	0	0	0	0	0	0	0 Shared with Records, included above
Archive Boxes	0	0	0	0	0	0	5	10	50	50	0	0	0	0 SECURE; Included in Records Archive
Records Viewing Room	0	0	0	0	1	1	10	18	180	0	180	180	180	SECURE; one door for entry from secure area, one door for entry from public; fixed counter to divide secure/public Onsite inspection of public records; electrical outlets
Group Total	7	8	16			10					639	1,952	1,952	1,952
SUBTOTAL	7	8	16								639	1,952	1,952	1,952
GENERAL CIRCULATION (25%)											0	488	488	488
TOTAL SQUARE FOOTAGE (Public Disclosure)											639	2,440	2,440	2,440

Space / Room Use	Staffing Requirements			Space Requirements			Space Size			Total Required Square Footage			Updated 04/16/18	Comments
	Exist	2019	2049	Exist	2019	2049	W	L	Area	Exist	2019	2049		
Department: Support Functions														
Restrooms/Showers/Lockers														
Men's Restroom	0	0	0	2	4	4	12	25	300	485	1,200	1,200	1,200	3x vanities, 3x urinals, 2x toilets; Assumes 2x per floor, with 2 floors; one w/in locker room
Men's Shower Room	0	0	0	1	1	1	10	20	200	320	200	200	200	3x Showers (1 ADA)
Men's Locker Room	0	0	0	0	50	50	2	6	12	1,050	600	600	600	50x Lockers - Includes Records & Admin Staff Includes 10x day-use lockers; weapon lockup
Women's Restroom	0	0	0	2	4	4	12	25	300	485	1,200	1,200	1,200	3x vanities, 3x toilets; Assumes 2x per floor w/2 floors one w/in locker room
Women's Shower Room	0	0	0	1	1	1	10	20	200	250	200	200	200	3x Showers (1 ADA)
Women's Locker Room	0	0	0	1	35	35	2	6	12	300	420	420	420	35x Lockers - Includes Records & Admin Staff Includes 10x day-use lockers; weapon lockup
Unisex Restrooms	0	0	0	5	3	3	8	9	72	275	216	216	216	One per floor (assumes 2 floors) Includes 1x for DTF Suite
First Aid Station	0	0	0	0	2	2	2	2	4	0	8	8	8	Located within each locker room
Boot Polish Station	0	0	0	0	2	2	2	3	6	0	12	12	12	Located within each locker room
Wellness/Nursing/Quiet	0	0	0	0	2	2	10	10	100	0	200	200	200	Adjacent locker rooms 1 per floor, not gender specific
Drying Closet	0	0	0	0	2	2	4	6	24	0	48	48	48	One per locker room
Group Total	0	0	0			106				3,165	4,304	4,304	4,304	
Fitness														
Training / Fitness / Cardio / Weights	0	0	0	1	1	1	35	50	1750	1,500	1,750	1,750	1,750	Weights/Machines
Fitness Storage	0	0	0	0	1	1	10	15	150	0	150	150	150	Storage of mats/other equipment
Linen Storage	0	0	0	0	0	0	0	0	0	0	0	0	0	Included in Laundry
Laundry	0	0	0	0	1	1	10	5	50	0	50	50	50	W/D closet; near or off of fitness
Group Total	0	0	0			3				1,500	1,950	1,950	1,950	
Shared														
Mud Room Vestibule	0	0	0	0	1	1	15	25	375	0	375	375	375	Access from secured parking w/ auto slide doors Includes equipment storage cubbies, 50x
Supply Storage	0	0	0	0	1	1	10	15	150	0	150	150	150	Shared Supply Closet
Hazmat Cabinet	0	0	0	0	1	1	2	4	8	0	8	8	8	Cabinet within storage
Break Room	0	0	0	0	1	1	30	35	1050	1,200	1,050	1,050	1,050	Room for 6-8x people, various seating options Coffee areas each floor
Kitchen / Food Prep / Vending	0	0	0	0	1	1	0	0	0	0	0	0	0	Ref/Freezer, Microwave, oven, D/W, commercial sink stove; Included in Breakroom SF
Common Space (HUB)	0	0	0	0	0	0	20	20	400	0	0	0	0	Included in Breakroom/Circulation
Group Total	0	0	0			5				1,200	1,583	1,583	1,583	
SUBTOTAL	0	0	0							5,865	7,837	7,837	7,837	
GENERAL CIRCULATION (25%)										0	1,959	1,959	1,959	
TOTAL SQUARE FOOTAGE (Support Functions)										5,865	9,796	9,796	9,796	

Space / Room Use	Staffing Requirements			Space Requirements			Space Size			Total Required Square Footage			Updated 04/16/18	Comments
	Exist	2019	2049	Exist	2019	2049	W	L	Area	Exist	2019	2049		
Department: Special Events														
Special Events														
Special Events Commander Office	1	1	1	1	1	1	12	18	216	270	216	216	216	L. Office (Private); small table, guest chairs, desk, credenza
Special Events Storage/Supplies	0	0	0	1	1	1	8	10	80	8	80	80	80	W/Shelving
Recruiting Sergeant	1	1	3	1	1	1	12	18	216	0	216	216	216	M. Office (Private); desk, credenza, guest seating
Recruiting Storage/Supply	0	0	0	1	1	1	8	10	80	0	80	80	80	W/Shelving
Recruitment Conference	0	0	0	0	1	1	10	12	120	0	120	120	120	Near Entrance for easy citizen access
<i>Group Total</i>	2	2	4			5				278	712	712	712	
Outreach/SRO Suite														
Community Outreach Sergeant	1	1	1	1	1	1	10	12	120	0	120	120	120	S. Office (Private); desk, credenza, guest seating
Community Outreach Officers	1	1	4	1	1	4	8	8	64	464	64	256	256	OPEN; (4) workstations @ 8x8 Visitor table and chairs
Community Outreach Storage	0	0	0	0	1	1	10	12	120	12	120	120	120	Storage for Fair Booth, Outreach, Ice Machine, Santa's Posse; Off outreach office & near access points/exits
SRO's	6	6	8	2	2	2	6	6	36	0	72	72	72	S. Cubes; open workspace, transitory work
Volunteers	60	60	60	0	3	3	6	6	36	0	108	108	108	S. Cubes; open workspace Up to 60 volunteers
<i>Group Total</i>	68	68	73			11				476	484	676	676	
SUBTOTAL	70	70	77							754	1,196	1,388	1,388	
GENERAL CIRCULATION (25%)										0	299	347	347	
TOTAL SQUARE FOOTAGE (Special Event Functions)										754	1,495	1,735	1,735	

Space / Room Use	Staffing Requirements			Space Requirements			Space Size			Total Required Square Footage			Updated 04/16/18	Comments
	Exist	2019	2049	Exist	2019	2049	W	L	Area	Exist	2019	2049		
Department: Patrol Division														
Patrol Division														
Patrol Division Commander	1	1	1	1	1	1	12	18	216	252	216	216	216	L.OFFICE; table and chairs for small mtgs Locate near Patrol Sgts and Bullpen Office
Patrol - Sergeants	12	12	12	2	6	6	12	18	216	504	1,296	1,296	1,296	(2) Sergeants per Office Near/Open to Report Writing Bullpen Office
Patrol Officers	75	75	75	0	0	0	0	0	0	0	0	0	0	Space allocated under Report Writing Room 38 per shift
Patrol Special Event Storage	0	0	0	0	1	1	10	10	100	0	100	100	100	Storage for Patrol Special Event Gear
Patrol Briefing Room	0	0	0	1	1	1	30	25	750	610	750	750	750	Equipped w/ audio/video equipment Room for 8-18x people; Table w/ extra chairs
Report Writing Room	0	0	0	8	12	12	8	8	64	835	768	768	768	OPEN (75 Patrol) 12x Shared/shift small workstations; standing capable desks w/ integral file cabinets, storage, docking stations
Patrol Phone Room	0	0	0	0	1	1	5	6	30	0	30	30	30	w/ workstation; for private conversations away from open report writing room
File Area	0	0	0	0	6	6	2	5	10	40	60	60	60	Within Report Writing Room Cabinet space
Large Evidence Room	0	0	0	1	1	1	18	26	468	210	468	468	468	Includes Evidence Lockers and Officer Processing (Options A and B)
Group Total	88	88	88			29				2,451	3,688	3,688	3,688	
Armory/Weapons														
Armory/ammunition/weapons	0	0	0	1	1	1	20	22	440	130	440	440	440	Workstations (x4) w/power bench, storage, gun safe, room for (2) mechanics; tool chests Shared with Special Ops; section off with Chain Link
Ammunition Storage	0	0	0	0	0	0	0	0	0	0	0	0	0	SECURE Located within Armory
Weapons Maintenance	0	0	0	0	0	0	0	0	0	0	0	0	0	SECURE Located adjacent or w/in Armory
Group Total	0	0	0			1				130	440	440	440	
Booking														
Intox / DUI / In Custody Processing	0	0	0	0	1	1	12	18	216	0	216	216	216	
Soft Interview Room	0	0	0	2	4	4	10	10	100	162	400	400	400	Equipped w/ audio/video equipment Hard room w/mtl door w/thumb turn lock; close to detect. One separated from others; not near break room
Unisex Toilet	0	0	0	0	1	1	6	8	48	0	48	48	48	Penal quality fixtures and remote flush
Temporary Animal Services Kennel	0	0	0	0	1	1	5	5	25	0	25	25	25	Water, drainage, hose bib
Group Total	0	0	0			7				162	689	689	689	
SUBTOTAL	88	88	88							2,743	4,817	4,817	4,817	
GENERAL CIRCULATION (25%)										0	1,204	1,204	1,204	
TOTAL SQUARE FOOTAGE (Patrol)										2,743	6,021	6,021	6,021	

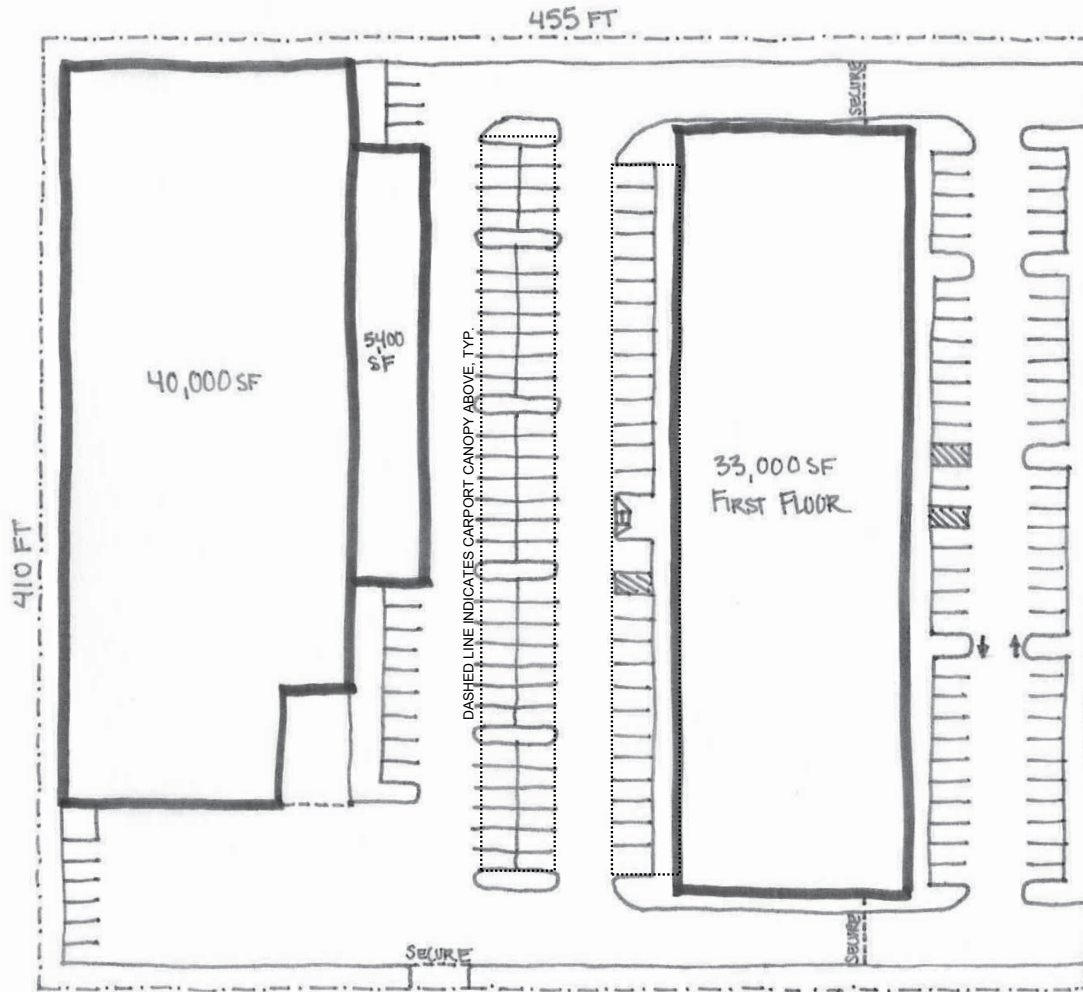
Space / Room Use	Staffing Requirements			Space Requirements			Space Size			Total Required Square Footage			Updated 04/16/18	Comments
	Exist	2019	2049	Exist	2019	2049	W	L	Area	Exist	2019	2049		
Department: Investigations														
Major Crimes Unit (MCU)														
<i>Suite; Reports to Investigations Commander</i>														
MCU Sergeant	1	1	1	1	1	1	10	12	120	0	120	120	120	S. Office (Private); desk, computer, files
MCU Detective	7	10	10	7	10	10	8	8	64	0	640	640	640	M/S. Cube; open workstations w/in suite
Supplies/Copy	0	0	0	0	1	1	8	10	80	0	80	80	80	Copy Machine, supplies, cabinets, countertops
MCU Evidence Tech Station	1	1	1	0	1	1	12	18	216	0	216	216	216	W/in MCU suite
MCU Digital Evidence Detective Workstation	1	1	1	0	1	1	12	16	192	0	192	192	192	Counters around perimeter; workspace; extra cooling
MCU Evidence Processing/Storage	0	0	0	1	1	1	26	30	780	0	780	780	780	W/in MCU suite
MCU Interview Rooms	0	0	0	2	2	2	10	10	100	0	200	200	200	Audio/Visual; soft interview; 3-4 people
MCU Briefing	0	0	0	1	1	1	16	25	400	0	400	400	400	7-10 People at one time
MCU Storage	0	0	0	0	1	1	8	8	64	0	64	64	64	Storage for Food, Bottled Water, etc. for up to 72 hours in emergency; small closet with lock
Existing MCU Building Area	0	0	0	0	0	0	0	0	0	3,100	0	0	0	Existing Building SF; includes all areas above (Includes Circulation)
Group Total	10	13	13			19				3,100	2,692	2,692	2,692	
Drug Task Force														
Investigations Commander	1	1	1	1	1	1	14	22	308	0	308	308	308	L. Office; small meeting capabilities
Financial Investigators	2	2	2	2	2	2	14	22	308	0	616	616	616	L. Office; small meeting capabilities; storage; paper
Detectives	5	5	8	5	5	8	10	10	100	0	500	800	800	Open Office with M. Cubes (10x10)
Sergeant	1	1	1	1	1	1	10	18	180	0	180	180	180	M. Office w/visitor chairs
Administrative Assistants	2	2	2	2	2	2	10	14	140	0	280	280	280	M. Office
K9 Training Room	0	0	0	1	1	1	12	12	144	0	144	144	144	Space for K-9 training, exercises, and gear
Conference/Briefing Room	0	0	0	1	1	1	18	40	720	0	720	720	720	20 -24 people seated; up to 30-40 people sitting/standing
Vehicle Maintenance Storage	0	0	0	1	1	1	10	12	120	0	120	120	120	Car maintenance, tools, batteries
Washer/Dryer	0	0	0	1	1	1	5	10	50	0	50	50	50	W/D Closet
Faraday Box	0	0	0	0	0	0	2	2	4	0	0	0	0	Box can be located within evidence, set on a counter no special room needed
Evidence Lockers	0	0	0	1	3	3	2	3	6	0	18	18	18	Lockers for Temporary Evidence Storage
Cash Safe (Evidence)	0	0	0	1	1	1	2	3	6	0	6	6	6	Safe for Cash Storage
Evidence Processing	0	0	0	1	1	1	14	20	280	0	280	280	280	Workspace for evidence processing; adjacent evidence lockers
Break Room/Kitchen	0	0	0	1	1	1	15	18	270	0	270	270	270	Need separate break space from the rest of the Sheriff's Office; kitchen with fridge/freezer, microwave, commercial sink; tables and chairs
Gear Storage	0	0	0	1	1	1	10	12	120	0	120	120	120	secure cabinets
Secure File Storage	0	0	0	1	1	1	12	15	180	0	180	180	180	Secure; sep alarm;
Archive Storage	0	0	0	1	1	1	10	12	120	0	120	120	120	Secure; sep alarm; 10 years of records
Storage	0	0	0	1	1	1	10	12	120	0	120	120	120	Adjacent to Secure File Storage; stats, bills, etc.
Server	0	0	0	0	0	0	0	0	0	0	0	0	0	(1) Rack- Included with IT in Sheriff's Office Server Room
Copy/Print/Supply	0	0	0	1	1	1	10	10	100	0	100	100	100	Needs to be in secure location; no after hours access by cleaning staff
Mailboxes	0	0	0	1	14	14	1	1	1	0	14	14	14	14x mailboxes
Existing Facilities	0	0	0	0	0	0	0	0	0	8,000	0	0	0	All existing DTF spaces above are included here. (Includes Circulation)
Group Total	11	11	14			43				8,000	4,146	4,446	4,446	
SUBTOTAL	21	24	27							11,100	6,838	7,138	7,138	
GENERAL CIRCULATION (25%)										0	1,710	1,785	1,785	
TOTAL SQUARE FOOTAGE (Investigations)										11,100	8,548	8,923	8,923	

Space / Room Use	Staffing Requirements			Space Requirements			Space Size			Total Required Square Footage			Updated 04/16/18	Comments
	Exist	2019	2049	Exist	2019	2049	W	L	Area	Exist	2019	2049		
Department: Special Operations														
Tactical Detectives Unit (TDU) / UASI														
<i>Near IT</i>														
Tactical Detectives Unit (TDU) Detectives	4	4	8	4	4	8	8	8	64	683	256	512	512	M/S. Cubes in TDU Suite
Tactical Detectives Unit (TDU) Sergeant	1	1	1	1	1	1	10	14	140	170	140	140	140	M. Office (Private)
Tactical Detectives Unit (TDU) Storage	0	0	0	1	1	1	14	20	280	0	280	280	280	Electronics; storage for cameras, tools, equipment
Tactical Detectives Unit (TDU) Server	0	0	0	0	0	0	10	10	100	169	0	0	0	1x rack; included in IT Server Space
TDU Server Workstation	1	1	1	1	1	1	12	16	192	0	192	192	192	M/S Cube for workspace off of Server Room
Urban Areas Security Initiative (UASI/Drones)	0	0	0	1	1	1	10	12	120	0	120	120	120	Extra A/C; adjacent to IT and Server Room Computer storage for video equipment, drones; tied to TDU storage
Group Total	6	6	10			12				1,022	988	1,244	1,244	
K-9 Unit														
<i>Reports to Patrol Sergeant</i>														
K-9 Master Handler	1	1	1	1	1	1	10	12	120	0	120	120	120	S. Office; workstation and storage for K-9 equip
K-9 Workstation	3	3	3	2	2	2	8	8	64	0	128	128	128	M/S. Cube
K-9 Records and Equipment	0	0	0	1	1	1	12	20	240	260	240	240	240	K-9 Storage; equipment; K-9 grooming station shelves for dog gear, food storage
K-9 Drying Room	0	0	0	0	1	1	5	5	25	0	25	25	25	Drying room for bite suits
K-9 Kennel	0	0	0	2	2	2	5	5	25	0	50	50	50	(2) Kennels
Group Total	4	4	4			7				260	563	563	563	
Special Operations Commander														
<i>Suite with Traffic and CVE</i>														
Traffic Sergeant	1	1	1	1	1	1	10	14	140	0	140	140	140	M. Office (Private)
Special Operations Commander	1	1	1	1	1	1	14	22	308	285	308	308	308	L. Office (Private) desk; space for small table/chairs; storage
Group Total	5	5	5			5				285	308	308	308	
Group Total	1	1	1			1				285	308	308	308	
Marine														
<i>Suite with Traffic and CVE</i>														
Special Ops Support Spaces														
<i>Marine Deputies</i>														
MRT Storage	4	4	4	4	4	4	8	8	64	0	256	256	256	M/S. Cubes; open workstations combined with Traffic and CVE in Suite
Marine Sergeant	0	0	0	1	1	1	10	14	140	64	140	140	140	Storage for chemical agents, magazine, less lethal ammo, etc.
Air Support Unit (ASU)	0	0	0	0	0	0	0	0	0	0	0	0	0	No Space Needs
Marine Storage	0	0	0	1	1	1	10	10	100	0	100	100	100	Storage for equipment; leaflets, flyers, stickers, life jackets, buoys
Copy/Supply/Work	0	0	0	1	2	2	12	16	192	370	384	384	384	Copy Machine; workspace; counter w/ island; cabinets
Group Total	5	5	5			8				496	496	496	496	x2 locations; share w/ Patrol and Events
<i>Marine is currently off site; no existing areas are known.</i>														
Commercial Vehicles (CVE)														
<i>Suite with Marine and Traffic</i>														
Commercial Vehicles (CVE)	1	1	1	1	1	1	8	8	64	0	64	64	64	M/S. Cube; open workstation combined with Traffic and Marine in Suite (spends most of time in field)
Group Total	1	1	1			1				0	64	64	64	
SWAT, TEMS, Negotiations														
Special Weapons and Tactics (SWAT) Office	1	1	1	1	1	1	10	14	140	0	140	140	140	M. Office (Private)
SWAT Workstation	1	1	1	1	1	1	8	8	64	0	64	64	64	M/S.. Cube; open workstation off of Special Ops
Special Weapons and Tactics (SWAT) Storage	0	0	0	1	1	1	10	12	120	0	120	120	120	Equipment storage
Negotiations and TEMS	6	6	6	2	2	2	8	8	64	0	128	128	128	M/S Cubes; away from patrol Report Writing; suite Cubes shared between Negotiations and TEMS
Shared Conference Room/ Training for Tact. Medics	0	0	0	0	1	1	18	26	468	0	468	468	468	Conf Room for 10 people; counter space
Training Records	0	0	0	0	1	1	8	8	64	0	64	64	64	Workstation for storage of training records
Group Total	8	8	8			7				0	984	984	984	

Space / Room Use	Staffing Requirements			Space Requirements			Space Size			Total Required Square Footage			Updated 04/16/18	Comments
	Exist	2019	2049	Exist	2019	2049	W	L	Area	Exist	2019	2049		
Department: Unallocated Existing Spaces/Circulation														
These spaces are located on the floor plans given, but existing use is unknown and needs to be confirmed.														
Unallocated Existing Spaces														
East Precinct Unallocated Spaces	0	0	0	1	1	1	0	0	0	3,000	0	0	0	Unknown Office, Conference, and Storage Space
East Precinct Existing Circulation	0	0	0	1	1	1	0	0	0	1,840	0	0	0	
Existing West Precinct Building Circulation (Patrol, Special Ops, and Special Events)	0	0	0	0	0	0	0	0	0	6,775	0	0	0	Existing Circulation Area at West Precinct
<i>Group Total</i>	0	0	0							11,615	0	0	0	
SUBTOTAL	0	0	0							11,615	0	0	0	
GENERAL CIRCULATION (25%)										0	0	0	0	
TOTAL SQUARE FOOTAGE (Unknown Spaces)										11,615	0	0	0	

HYPOTHETICAL SITE PLAN FOR PRICING

OPTION C



Note: Hypothetical site does not take into account zoning requirements for minimum setbacks, open areas, or landscape requirements.

OPTION C
CLARK COUNTY SHERIFF'S OFFICE
4/16/2018

SPACE REQUIREMENTS SUMMARY

OPTION C

Space / Room Use	Staffing Requirements			Space Requirements			Space Size			Total Required Square Footage			Updated 04/16/18	Comments
	Exist	2019	2049	Exist	2019	2049	W	L	Area	Exist	2019	2049		
Department: Clark County Sheriff's Department Space Requirements Summary														
Public Functions & Facility Core	0	0	0							11,969	13,481	13,481	13,481	
Sheriff's Department	302	323	351							67,872	90,541	91,626	91,626	
TOTAL	302	323	351							79,841	104,022	105,107	105,107	

Department: Clark County Sheriff's Department Site Requirements Summary														
Public Functions & Facility Core	0	0	0							11,969	13,481	13,481	13,481	
Information Technology	4	4	4							633	1,500	1,500	1,500	
Human Resources	4	5	5							1,030	1,880	1,880	1,880	
Finance	8	8	8							1,097	1,250	1,250	1,250	
Risk	1	2	2							110	325	325	325	
Sheriff Administration	7	7	7							1,905	3,398	3,398	3,398	
Sheriff Headquarters	26	31	32							800	2,393	2,543	2,543	
Records Division	27	36	40							3,852	6,220	6,220	6,220	
Public Disclosure	7	8	16							639	2,440	2,440	2,440	
Evidence & Logistics	9	10	11							34,878	39,850	39,850	39,850	
Sheriff Support Functions	0	0	0							5,865	9,796	9,796	9,796	
Special Events	70	70	77							754	1,495	1,735	1,735	*Staffing Requirements Include Volunteers
Sheriff Patrol Division	88	88	88							2,743	5,436	5,436	5,436	
Sheriff Investigations	21	24	27							11,100	8,548	8,923	8,923	
Sheriff Special Operations	30	30	34							2,466	6,011	6,331	6,331	
Unallocated Existing Areas/Circulation	0	0	0							11,615	0	0	0	
TOTAL BUILDING	302	323	351							91,456	104,022	105,107	105,107	
TOTAL EXTERIOR REQUIREMENTS										54,699	111,663	114,200	114,200	
TOTAL SITE REQUIREMENTS: Single-Story Option										146,155	215,686	219,308	219,308	
TOTAL SITE REQUIREMENTS: Two-Story Option (w/Single Story Evidence)										183,599	186,679	186,679	186,679	
TOTAL SITE REQUIREMENTS: Three-Story Option										146,337	149,236	149,236	149,236	

- Existing SF have been calculated from the existing West Precinct and East Precinct plans, provided by Clark County Sheriff's Office

Space / Room Use	Staffing Requirements			Space Requirements			Space Size			Total Required Square Footage			Updated 04/16/18	Comments
	Exist	2019	2049	Exist	2019	2049	W	L	Area	Exist	2019	2049		
Areas of Revision														
Public Functions & Facility Core				0	0	0	0	0	0	0	0	0	0	
Information Technology				0	0	0	0	0	0	0	0	0	0	
Human Resources				0	0	0	0	0	0	0	0	0	0	
Finance				0	0	0	0	0	0	0	0	0	0	
Risk Manager				0	0	0	0	0	0	0	0	0	0	
Sheriff Administration				0	0	0	0	0	0	0	0	0	0	
Sheriff Headquarters				0	0	0	0	0	0	0	0	0	0	
Records Division				0	0	0	0	0	0	0	0	0	0	
Sheriff Public Disclosure				0	0	0	0	0	0	0	0	0	0	
Evidence & Logistics				0	0	0	0	0	0	0	0	0	0	
Sheriff Support Functions				0	0	0	0	0	0	0	0	0	0	
Special Events				0	0	0	0	0	0	0	0	0	0	
Patrol Division				0	0	0	0	0	0	0	0	0	0	
Sheriff Investigations				0	0	0	0	0	0	0	0	0	0	
Sheriff Special Operations				0	0	0	0	0	0	0	0	0	0	
TOTAL SQUARE FOOTAGE (2018 Revisions)													0	0

Space / Room Use	Staffing Requirements			Space Requirements			Space Size			Total Required Square Footage			Updated 04/16/18	Comments
	Exist	2019	2049	Exist	2019	2049	W	L	Area	Exist	2019	2049		
Department: Public Functions & Facility Core														
Public Lobby														
Entry Vestibule	0	0	0	0	1	1	14	18	252	140	252	252	252	PUBLIC 911 phone
Public Lobby Waiting Area	0	0	0	1	1	1	30	45	1350	2,000	1,350	1,350	1,350	PUBLIC; 10-25 people; high traffic seating, TV/Monitor adequate lighting (Existing includes all three facilities)
Community Room / EOC	0	0	0	0	1	1	38	60	2280	0	2,280	2,280	2,280	Seating for 50-55 People at Tables; off public lobby; Scheduled Public Use (SECURE)
EOC Storage (work stations)	0	0	0	0	1	1	4	30	120	0	120	120	120	EOC Functions, docking stations; possible temp partition w/ acoustic separation down the middle; kitchenette/sink/coffee
Chair Storage (Community Room)	0	0	0	0	1	1	15	20	300	0	300	300	300	SECURE work stations around at perimeter w/ HAM Radio connections/storage; computer docking
AV Closet	0	0	0	0	2	2	8	8	64	0	128	128	128	PUBLIC; tables and chairs
Classroom/Training	0	0	0	0	1	1	38	72	2736	1,900	2,736	2,736	2,736	(1) for Community Room and (1) for Classroom
Training Storage (Classroom)	0	0	0	0	1	1	15	25	375	150	375	375	375	SECURE Seating for 60-75 People at Tables
Lobby Information	0	0	0	0	1	1	2	6	12	0	12	12	12	SECURE; training equipment, tables, chairs, mats
Display Area	0	0	0	0	1	1	2	6	12	0	12	12	12	PUBLIC Includes forms, info, translator, resources
Report Taking Room	0	0	0	0	1	1	10	14	140	320	140	140	140	PUBLIC Pamphlets/Plaques/Photos/Etc.
Public Restrooms / Men's & Women's / Unisex	0	0	0	2	3	3	12	25	300	400	900	900	900	PUBLIC Dual access from Reception Covert camera & microphone.
Vending Vestibule	0	0	0	0	1	1	10	12	120	105	120	120	120	PUBLIC Includes vending, drinking fountain, pay phone
Group Total	0	0	0		16					5,015	8,725	8,725	8,725	
Facility Core														
Janitor	0	0	0	1	2	2	6	8	48	225	96	96	96	1x per floor; assumes 2 floors
Stairway	0	0	0	2	4	4	12	20	240	900	960	960	960	2x per floor; assumes 2 floors
Elevator	0	0	0	0	1	1	6	8	48	100	48	48	48	1 Secure/public, Front and Rear; access control
Elevator Equipment Room	0	0	0	0	1	1	5	6	30	30	30	30	30	Adjacent Elevator
Mechanical Shaft	0	0	0	0	2	2	5	10	50	215	100	100	100	
Server Room	0	0	0	1	0	0	12	16	192	0	0	0	0	Included in IT program
Electrical Room / Mech. Room	0	0	0	5	2	2	18	20	360	2,850	720	720	720	1x per floor; 4'x4' room for data switches and routers in locked box or chain link fence
Communications Room	0	0	0	1	2	2	5	5	25	70	50	50	50	
Sprinkler Riser Room	0	0	0	1	1	1	7	8	56	170	56	56	56	
Group Total	0	0	0		15					4,560	2,060	2,060	2,060	
SUBTOTAL	0	0	0							9,575	10,785	10,785	10,785	
GENERAL CIRCULATION (25%)										2,394	2,696	2,696	2,696	
TOTAL SQUARE FOOTAGE (Public Functions & Facility Core)										11,969	13,481	13,481	13,481	

Space / Room Use	Staffing Requirements			Space Requirements			Space Size			Total Required Square Footage			Updated 04/16/18	Comments
	Exist	2019	2049	Exist	2019	2049	W	L	Area	Exist	2019	2049		
Department: Information Technology														
<i>Near TDU</i>														
Information Technology														
IT Technician Offices	3	3	3	3	3	3	10	12	120	390	360	360	360	S. Office
Information Systems Mgr.	1	1	1	1	1	1	10	14	140	243	140	140	140	M.OFFICE
Server Room	0	0	0	0	1	1	12	20	240	0	240	240	240	SECURE; 4 racks with clearances and small work space need generator/UPS support (sep from County Telecom) Extra heavy heating/cooling/power (1) TDU rack, (1) bodycam rack, (1) dept rack; (1) DTF rack
Storage	0	0	0	0	1	1	10	10	100	0	100	100	100	Storage for extra parts/equipment
Work Room	0	0	0	0	1	1	14	20	280	0	280	280	280	Workspace for equipment, tools; heavy cooling
Supply	0	0	0	0	1	1	8	10	80	0	80	80	80	Built-ins, Counter
Copy/Print	0	0	0	0	0	0	0	0	0	0	0	0	0	Shared space
<i>Group Total</i>	4	4	4			8				633	1,200	1,200	1,200	
SUBTOTAL	4	4	4							633	1,200	1,200	1,200	
GENERAL CIRCULATION (25%)										0	300	300	300	
TOTAL SQUARE FOOTAGE (IT)										633	1,500	1,500	1,500	

Space / Room Use	Staffing Requirements			Space Requirements			Space Size			Total Required Square Footage			Updated 04/16/18	Comments
	Exist	2019	2049	Exist	2019	2049	W	L	Area	Exist	2019	2049		

Department: Human Resources

Can share a suite with Finance and Risk

Human Resources														
HR Manager	1	1	1	1	1	1	12	18	216	100	216	216	216	L. (Private) Office; small table with chairs
HR Support Positions	1	2	2	1	2	2	10	12	120	620	240	240	240	L. Cubes x2 in open work area
HR Analyst	2	2	2	2	2	2	10	14	140	125	280	280	280	M. (Private) Offices
HR Secure File	0	0	0	1	1	1	10	20	200	185	200	200	200	SECURE; Room for 16-18 Lateral File Cabinets
Group Total	4	5	5			6					1,030	936	936	936

Shared/Support Spaces

Supplies	0	0	0	1	1	1	8	8	64	0	64	64	64	Shared with Finance & Risk
Work Room/Copy/Print	0	0	0	1	1	1	10	12	120	0	120	120	120	Shared with Finance and Risk; counter space; storage;
Conference	0	0	0	1	1	1	16	24	384	0	384	384	384	Shared with Finance & Risk (10 people)
Group Total	0	0	0			3				0	568	568	568	
SUBTOTAL	4	5	5								1,030	1,504	1,504	1,504
GENERAL CIRCULATION (25%)										0	376	376	376	
TOTAL SQUARE FOOTAGE (HR)										1,030	1,880	1,880	1,880	

Department: Finance

Can share a suite with HR and Risk

Finance														
Workstations	6	6	6	6	6	6	10	12	120	850	720	720	720	L. Cubes in Open Office
Finance Manager	1	1	1	1	1	1	10	14	140	122	140	140	140	M.OFFICE
Assistant Manager	1	1	1	1	1	1	10	14	140	65	140	140	140	M.OFFICE
Active Archive Storage	0	0	0	0	0	0	0	0	0	60	0	0	0	SECURE; Shelves included in HR File above
Archive (Records)	0	0	0	0	0	0	0	0	0	0	0	0	0	Included in Records
Group Total	8	8	8			8				1,097	1,000	1,000	1,000	

Shared/Support Spaces

Supplies	0	0	0	1	1	1	0	0	0	0	0	0	0	0	Shared with HR & Risk (Included above)
Work Room	0	0	0	1	1	1	0	0	0	0	0	0	0	0	Shared with HR & Risk (Included above)
Conference	0	0	0	1	1	1	0	0	0	0	0	0	0	0	Shared with HR & Risk (Included above)
Group Total	0	0	0			3				0	0	0	0	0	
SUBTOTAL	8	8	8							1,097	1,000	1,000	1,000		
GENERAL CIRCULATION (25%)										0	250	250	250		
TOTAL SQUARE FOOTAGE (Finance)										1,097	1,250	1,250	1,250		

Space / Room Use	Staffing Requirements			Space Requirements			Space Size			Total Required Square Footage			Updated 04/16/18	Comments	
	Exist	2019	2049	Exist	2019	2049	W	L	Area	Exist	2019	2049			
Department: Risk Management															
<i>Shares a Suite with HR and Finance</i>															
Risk Management															
Risk Manager	1	1	1	1	1	1	10	14	140	110	140	140	140	M. (Private) Office	
Risk Work Station	0	1	1	0	1	1	10	12	120	0	120	120	120	S. OFFICE (Private or Cube)	
<i>Group Total</i>	1	2	2			2				110	260	260	260		
Shared/Support Spaces															
Supplies	0	0	0	1	1	1	0	0	0	0	0	0	0	0	Shared with HR & Risk (Included above)
Work Room	0	0	0	1	1	1	0	0	0	0	0	0	0	0	Shared with HR & Risk (Included above)
Conference	0	0	0	1	1	1	0	0	0	0	0	0	0	0	Shared with HR & Risk (Included above)
<i>Group Total</i>	0	0	0			3				0	0	0	0	0	
SUBTOTAL	1	2	2							110	260	260	260		
GENERAL CIRCULATION (25%)										0	65	65	65		
TOTAL SQUARE FOOTAGE (Risk)										110	325	325	325		

Space / Room Use	Staffing Requirements			Space Requirements			Space Size			Total Required Square Footage			Updated 04/16/18	Comments
	Exist	2019	2049	Exist	2019	2049	W	L	Area	Exist	2019	2049		
Department: Sheriff Administration														
<i>Suite</i>														
Sheriff Administration														
Administrative Lobby/Waiting	0	0	0	1	1	1	15	18	270	170	270	270	270	Security Glass; seating
Sheriff	1	1	1	1	1	1	14	22	308	260	308	308	308	L. (Private) Office; room for meeting with up to 4 people
Undersheriff	1	1	1	1	1	1	18	26	468	205	468	468	468	XL. (Private) Office; room for meeting with up to 8 people
Enforcement Branch Chief Deputy	1	1	1	1	1	1	14	22	308	195	308	308	308	L. (Private) Office; room for meeting with up to 4 people
Civil Branch Chief Deputy	1	1	1	1	1	1	14	22	308	215	308	308	308	L. (Private) Office; room for meeting with up to 4 people
Receptionist	2	2	2	2	2	2	10	12	120	120	240	240	240	OPEN (2x) Large workstations, near lobby/waiting
Administrative Assistant	1	1	1	1	1	1	10	12	120	300	120	120	120	S. (Private) Office; centrally located; near Sheriff and Undersheriff
Administrative Copy/Print/Work Room	0	0	0	1	1	1	12	18	216	175	216	216	216	Shared Copy/Work/Print space
Administrative Conference Room	0	0	0	1	1	1	16	30	480	265	480	480	480	Meeting space for 12-16 people
Group Total	7	7	7				10			1,905	2,718	2,718	2,718	
SUBTOTAL	7	7	7							1,905	2,718	2,718	2,718	
GENERAL CIRCULATION (25%)										0	680	680	680	
TOTAL SQUARE FOOTAGE (Sheriff Admin)										1,905	3,398	3,398	3,398	
Department: Sheriff Headquarters														
<i>Suite</i>														
Internal Affairs														
Internal Affairs Sergeants	2	2	2	1	2	2	12	18	216	82	432	432	432	L. Office (Private) desk, computer, files Locate off Patrol Sgt Bullpen Office
Internal Affairs Support Staff	0	1	1	0	1	1	8	8	64	225	64	64	64	M./S. Cube for support staff Open to work area
Supplies/Copy/Work	0	0	0	0	1	1	8	10	80	90	80	80	80	Copy Machine, supplies, cabinets, countertops
IA Interview Room	0	0	0	0	1	1	10	15	150	0	150	150	150	Conference table, 4-6 people; audio/visual - video recording
Group Total	2	3	3				5			397	726	726	726	
CALEA														
<i>Suite - Near IA or Training</i>														
CALEA Sergeant/PIO	1	1	1	1	1	1	10	12	120	0	120	120	120	S. Office (Private) Desk, computer, files, TV w/ access to Cable
CALEA Support	1	1	1	1	1	1	8	8	64	0	64	64	64	M./S. Cube (open workstation)
Group Total	2	2	2				2			0	184	184	184	
Training and Backgrounds														
<i>Suite</i>														
Backgrounds Investigators	3	4	4	3	4	4	10	12	120	275	480	480	480	S. Office (Private)
Training Sergeants	2	2	3	2	2	3	10	12	120	64	240	360	360	S. Office (Private)
Training Support	1	1	1	1	1	1	8	8	64	64	64	64	64	M./S. Cube (open workstation)
Training Workstations	6	6	6	6	6	6	2.5	4	10	0	60	60	60	Small desks w/computers where students can set their things down for the day, check emails; report writing style open workstations
Group Total	12	13	14				14			403	844	964	964	
Shared Support Spaces														
Copy/Print/Work	0	0	0	2	2	2	8	10	80	0	160	160	160	Shared and dispersed at convenient locations for HQ
Group Total	0	0	0				2			0	160	160	160	
SUBTOTAL	26	31	32							800	1,914	2,034	2,034	
GENERAL CIRCULATION (25%)										0	479	509	509	
TOTAL SQUARE FOOTAGE (Headquarters)										800	2,393	2,543	2,543	

Space / Room Use	Staffing Requirements			Space Requirements			Space Size			Total Required Square Footage			Updated 04/16/18	Comments
	Exist	2019	2049	Exist	2019	2049	W	L	Area	Exist	2019	2049		
Department: Sheriff Records Division														
<i>Currently also oversees jail records; if Sheriff's office moves, Jail records to remain in building.</i>														
Records														
Public Reception (Service Counter) and Lobby	0	2	2	1	1	1	15	30	450	0	450	450	450	OPEN; (2) service counters/windows sep for privacy Secure w/ bullet resistant glazing & paneling ADA counter; 2x stations (with computers) SECURE Window document pass through
Criminal Records Supervisor	3	5	6	3	3	3	10	12	120	82	360	360	360	S. OFFICE or L. CUBE Windows to observe records and front desk
Criminal Records Support Specialists	17	18	18	6	6	6	8	8	64	2,365	384	384	384	OPEN (6 people per shift) 8x8 work stations with layout area, bulpen
Warrants Supervisor	1	2	2	1	2	2	10	12	120	0	240	240	240	S. OFFICE or L. CUBE Windows to observe warrants and front desk
Warrants Support Specialists	4	6	8	4	8	8	8	8	64	0	512	512	512	OPEN 8x8 work stations with layout area, bulpen
Records Program Manager	1	1	1	1	1	1	10	18	180	110	180	180	180	M. OFFICE (Private)
Case Management Sergeant	1	1	1	1	1	1	10	12	120	180	120	120	120	M. OFFICE (Private); off of Records
Copy/Print/Work Room	0	0	0	1	1	1	12	18	216	225	216	216	216	(2) copiers, work table, storage Shared with Public Disclosure
Records Storage - Confidential	0	0	0	1	1	1	12	14	168	0	168	168	168	Compact shelving; off of Archive with sep. secure access climate controlled
Records Storage - Archive	0	0	0	1	1	1	40	40	1600	890	1,600	1,600	1,600	Compact shelving; key card access; climate control Digital records; same room as active; includes finance
Records Storage - Active	0	0	0	1	1	1	12	25	300	0	300	300	300	High density storage
Archivist	0	1	2	1	1	1	12	18	216	0	216	216	216	Shared Office with up to 2 workstations
Supply Storage	0	0	0	1	1	1	8	10	80	0	80	80	80	Adjacent to Files, Copy and Reception. Shared with Public Disclosure
Small Shared Conf. Space	0	0	0	0	1	1	10	15	150	0	150	150	150	Shift Briefing/Conference Space for Supervisors Up to 6 people; Shared w/ public disclosure
Group Total	27	36	40			29				3,852	4,976	4,976	4,976	
SUBTOTAL	27	36	40							3,852	4,976	4,976	4,976	
GENERAL CIRCULATION (25%)										0	1,244	1,244	1,244	
TOTAL SQUARE FOOTAGE (Records)										3,852	6,220	6,220	6,220	

Department: Public Disclosure														
<i>Enclosed Suite, near Records</i>														
Public Disclosure														
Public Disclosure Manager Office	1	1	1	1	1	1	10	14	140	125	140	140	140	M. Office (Private) Guest seating; book shelf, overhead cabinets, printer, side table
Supervisor	1	1	1	1	1	1	10	12	120	64	120	120	120	S. Office (Private) desk; guest chair; book-shelf; cabinets
Program Assistant	1	1	2	1	1	1	12	18	216	140	216	216	216	Shared Office for future growth; desk, guest chairs, bookshelf, cabinets
Support Specialist II	4	2	4	4	2	2	12	18	216	260	432	432	432	L. Office (Shared); desks, guest chairs, cabinets, copier 2 people per office
Support Specialist III	0	3	3	0	2	2	12	18	216	0	432	432	432	L. Office (Shared); desks, guest chairs, cabinets, copier 2 people per office
Body Cam Technician	0	0	5	0	1	1	18	24	432	0	432	432	432	L. Office (Shared); equipment stor; work space; desks storage; cabinets; guest chairs; 5x Cubes
Storage/Copy/Print	0	0	0	0	1	1	0	0	0	0	0	0	0	Shared with Records, included above
Archive Boxes	0	0	0	0	0	0	5	10	50	50	0	0	0	SECURE; included in Records Archive
Records Viewing Room	0	0	0	0	1	1	10	18	180	0	180	180	180	SECURE; one door for entry from secure area, one door for entry from public; fixed counter to divide secure/public Onsite inspection of public records; electrical outlets
Group Total	7	8	16			10				639	1,952	1,952	1,952	
SUBTOTAL	7	8	16							639	1,952	1,952	1,952	
GENERAL CIRCULATION (25%)										0	488	488	488	
TOTAL SQUARE FOOTAGE (Public Disclosure)										639	2,440	2,440	2,440	

Space / Room Use	Staffing Requirements			Space Requirements			Space Size			Total Required Square Footage			Updated 04/16/18	Comments
	Exist	2019	2049	Exist	2019	2049	W	L	Area	Exist	2019	2049		
Department: Evidence and Logistics														
On Average about 55,000 items in evidence storage; would like to centralize Evidence, but keep processing at Jail; ALL SPACES ON FIRST FLOOR														
Support Space														
Front Desk Area	0	0	0	1	1	1	10	10	100	190	100	100	100	SECURE door to Viewing, Evidence, and Logistics
Break Room	0	0	0	1	0	0	0	0	0	500	0	0	0	Relocated to Share with All Departments
Evidence Conference Room	0	0	0	1	1	1	16	24	384	0	384	384	384	Meetings for up to 10 people
Restrooms	0	0	0	2	2	2	10	10	100	200	200	200	200	Boots storage; shelves
Copier/Supply Room	0	0	0	1	1	1	10	18	180	150	180	180	180	Cabinets (upper & lower); counters; supply storage
Data Room	0	0	0	0	1	1	10	10	100	0	100	100	100	Data, Telephone, Network Equipment (Currently located in Copy room)
Manager's Office	1	1	1	1	1	1	14	22	308	168	308	308	308	Comfy Chairs, Coffee Table, File Cabinets
Group Total	1	1	1							1,208	1,272	1,272	1,272	

Evidence														
Lobby	0	0	0	1	1	1	12	18	216	95	216	216	216	Separate from Logistics; Public and Employee entrances; sep off lobby; bullet resistant glazing
Property Viewing/Return Room	0	0	0	0	1	1	12	18	216	0	216	216	216	Large table for viewings, large door, scale, locked on one side, ring to open door from lobby (SECURE)
Evidence Technician Offices	4	5	5	1	1	1	20	40	800	395	800	800	800	OPEN (5) workstations; files; printer; file cabinets; secure; secure windows
Indoor Vehicle Impound Lot	0	0	0	1	1	1	70	150	10,500	10,000	10,500	10,500	10,500	Door to work room (for smells) w/ window to corridor
Seized cars pending search warrants	0	0	0	3	3	3	10	20	200	0	600	600	600	36 Vehicles Average (this size fits 45 standard sized vehicles - 3 rows of 15)
Evidence - Drug Storage	0	0	0	1	1	1	22	55	1210	1,035	1,210	1,210	1,210	SECURE; off of Evidence Storage Room
Evidence Storage - Drying				1	0	0	15	12	180	0	0	0	0	SECURE; SF located within drug storage room floor drain, FRP @ walls, hanging rods
Evidence Processing - Officer				0	1	1	29	30	870	210	870	870	870	SECURE (currently at West Precinct and MCU)
Technician Work Room (Lab)	0	0	0	0	1	1	29	30	870	0	870	870	870	Cardkey access, evidence lockers, SS work area
Evidence Files - Active	0	0	0	0	0	0	0	0	0	0	0	0	0	Evidence Tech Processing area; SS island at center, Fume hood, drying closet, temp evidence lockers, utility sink, finger printing table, counters/storage
Evidence Storage - General	0	0	0	1	1	1	40	410	16,400	16,000	16,400	16,400	16,400	SECURE Located in open area of Property Technicians
Refrigerated/Freezer Storage				0	2	2	6	6	36	36	72	72	72	SECURE (One Central location) Accessible through Technician Work Room; High density compact shelving; High windows w/ secure bars
Weapons Storage				1	1	1	36	21	756	756	756	756	756	SECURE (prefer walk in refrigerator and freezer) Within Evidence Storage room; Refrigerator/Freezer
Cash/Jewelry Storage				1	0	0	6	6	36	30	0	0	0	SECURE; vault w/in Evidence Storage Room
Oversized Item Storage				1	0	0	5	60	300	0	0	0	0	SECURE; included in Evidence Storage Room SF
Flammable Locker Space				0	1	1	2	4	8	8	8	8	8	SECURE - Locker in Evidence Storage Room
Supply Storage				0	0	0	2	8	16	0	0	0	0	SECURE - Cabinet; SF included in evidence tech area
Bicycle Storage - Impound				0	0	0	7	20	140	0	0	0	0	SECURE; currently included in Indoor Vehicle Impound
Group Total	4	5	5							28,470	32,086	32,086	32,086	Included in Indoor Vehicle Impound Lot SF

Logistics														
Logistics Lobby	0	0	0	0	1	1	12	18	216	0	216	216	216	Separate entrance/lobby from Evidence
Logistics Office	2	2	3	1	1	1	12	18	216	150	216	216	216	SHARED; Working files; research; staff work areas windows
Cadet Office	2	2	2	1	1	1	0	0	0	0	0	0	0	OPEN; desks, chairs, table space in Logistics Uniform Storage room (space included below); windows
Logistics Uniform/Storage Room	0	0	0	1	1	1	15	31	465	450	465	465	465	Accept deliveries; outfit employees, maintain files, cadet desks, equipment disbursement
Logistics Warehouse	0	0	0	1	1	1	40	115	4,600	4,000	4,600	4,600	4,600	SECURE; Store supplies, uniforms, equipment, ammo, personal protection, firearms; NEED (1) loading dock
Fitting Rooms	0	0	0	0	2	2	5	5	25	0	50	50	50	High windows with security bars
Group Total	4	4	5							4,600	5,331	5,331	5,331	Changing Rooms for uniform issuance
SUBTOTAL	9	10	11							34,278	38,689	38,689	38,689	
GENERAL CIRCULATION (3% Reduced)										600	1,161	1,161	1,161	
TOTAL SQUARE FOOTAGE (Evidence and Logistics)										34,878	39,850	39,850	39,850	

Space / Room Use	Staffing Requirements			Space Requirements			Space Size			Total Required Square Footage			Updated 04/16/18	Comments
	Exist	2019	2049	Exist	2019	2049	W	L	Area	Exist	2019	2049		
Department: Support Functions														
Restrooms/Showers/Lockers														
Men's Restroom	0	0	0	2	4	4	12	25	300	485	1,200	1,200	1,200	3x vanities, 3x urinals, 2x toilets; Assumes 2x per floor, with 2 floors; one w/in locker room
Men's Shower Room	0	0	0	1	1	1	10	20	200	320	200	200	200	3x Showers (1 ADA)
Men's Locker Room	0	0	0	0	50	50	2	6	12	1,050	600	600	600	50x Lockers - Includes Records & Admin Staff Includes 10x day-use lockers; weapon lockup
Women's Restroom	0	0	0	2	4	4	12	25	300	485	1,200	1,200	1,200	3x vanities, 3x toilets; Assumes 2x per floor w/2 floors one w/in locker room
Women's Shower Room	0	0	0	1	1	1	10	20	200	250	200	200	200	3x Showers (1 ADA)
Women's Locker Room	0	0	0	1	35	35	2	6	12	300	420	420	420	35xLockers - Includes Records & Admin Staff Includes 10x day-use lockers; weapon lockup
Unisex Restrooms	0	0	0	5	3	3	8	9	72	275	216	216	216	One per floor (assumes 2 floors) Includes 1x for DTF Suite
First Aid Station	0	0	0	0	2	2	2	2	4	0	8	8	8	Located within each locker room
Boot Polish Station	0	0	0	0	2	2	2	3	6	0	12	12	12	Located within each locker room
Wellness/Nursing/Quiet	0	0	0	0	2	2	10	10	100	0	200	200	200	Adjacent locker rooms 1 per floor, not gender specific
Drying Closet	0	0	0	0	2	2	4	6	24	0	48	48	48	One per locker room
Group Total	0	0	0		106					3,165	4,304	4,304	4,304	
Fitness														
Training / Fitness / Cardio / Weights	0	0	0	1	1	1	35	50	1750	1,500	1,750	1,750	1,750	Weights/Machines
Fitness Storage	0	0	0	0	1	1	10	15	150	0	150	150	150	Storage of mats/other equipment
Linen Storage	0	0	0	0	0	0	0	0	0	0	0	0	0	Included in Laundry
Laundry	0	0	0	0	1	1	10	5	50	0	50	50	50	W/D closet; near or off of fitness
Group Total	0	0	0		3					1,500	1,950	1,950	1,950	
Shared														
Mud Room Vestibule	0	0	0	0	1	1	15	25	375	0	375	375	375	Access from secured parking w/ auto slide doors Includes equipment storage cubbies, 50x
Supply Storage	0	0	0	0	1	1	10	15	150	0	150	150	150	Shared Supply Closet
Hazmat Cabinet	0	0	0	0	1	1	2	4	8	0	8	8	8	Cabinet within storage
Break Room	0	0	0	0	1	1	30	35	1050	1,200	1,050	1,050	1,050	Room for 6-8x people, various seating options Coffee areas each floor
Kitchen / Food Prep / Vending	0	0	0	0	1	1	0	0	0	0	0	0	0	Reff/Freezer, Microwave, oven, D/W, commercial sink stove; Included in Breakroom SF
Common Space (HUB)	0	0	0	0	0	0	20	20	400	0	0	0	0	Included in Breakroom/Circulation
Group Total	0	0	0		5					1,200	1,583	1,583	1,583	
SUBTOTAL	0	0	0							5,865	7,837	7,837	7,837	
GENERAL CIRCULATION (25%)										0	1,959	1,959	1,959	
TOTAL SQUARE FOOTAGE (Support Functions)										5,865	9,796	9,796	9,796	

Space / Room Use	Staffing Requirements			Space Requirements			Space Size			Total Required Square Footage			Updated 04/16/18	Comments
	Exist	2019	2049	Exist	2019	2049	W	L	Area	Exist	2019	2049		
Department: Special Events														
Special Events														
Special Events Commander Office	1	1	1	1	1	1	12	18	216	270	216	216	216	L. Office (Private); small table, guest chairs, desk, credenza
Special Events Storage/Supplies	0	0	0	1	1	1	8	10	80	8	80	80	80	W/Shelving
Recruiting Sergeant	1	1	3	1	1	1	12	18	216	0	216	216	216	M. Office (Private); desk, credenza, guest seating
Recruiting Storage/Supply	0	0	0	1	1	1	8	10	80	0	80	80	80	W/Shelving
Recruitment Conference	0	0	0	0	1	1	10	12	120	0	120	120	120	Near Entrance for easy citizen access
Group Total	2	2	4			5				278	712	712	712	
Outreach/SRO Suite														
Community Outreach Sergeant	1	1	1	1	1	1	10	12	120	0	120	120	120	S. Office (Private); desk, credenza, guest seating
Community Outreach Officers	1	1	4	1	1	4	8	8	64	464	64	256	256	OPEN; (4) workstations @ 8x8 Visitor table and chairs
Community Outreach Storage	0	0	0	0	1	1	10	12	120	12	120	120	120	Storage for Fair Booth, Outreach, Ice Machine, Santa's Posse; Off outreach office & near access points/exits
SRO's	6	6	8	2	2	2	6	6	36	0	72	72	72	S. Cubes; open workspace, transitory work
Volunteers	60	60	60	0	3	3	6	6	36	0	108	108	108	S. Cubes; open workspace Up to 60 volunteers
Group Total	68	68	73			11				476	484	676	676	
SUBTOTAL	70	70	77							754	1,196	1,388	1,388	
GENERAL CIRCULATION (25%)										0	299	347	347	
TOTAL SQUARE FOOTAGE (Special Event Functions)										754	1,495	1,735	1,735	

Space / Room Use	Staffing Requirements			Space Requirements			Space Size			Total Required Square Footage			Updated 04/16/18	Comments
	Exist	2019	2049	Exist	2019	2049	W	L	Area	Exist	2019	2049		
Department: Patrol Division														
Patrol Division														
Patrol Division Commander	1	1	1	1	1	1	12	18	216	252	216	216	216	L.OFFICE; table and chairs for small mtgs Locate near Patrol Sgts and Bulpen Office
Patrol - Sergeants	12	12	12	2	6	6	12	18	216	504	1,296	1,296	1,296	(2) Sergeants per Office Near/Open to Report Writing Bulpen Office
Patrol Officers	75	75	75	0	0	0	0	0	0	0	0	0	0	Space allocated under Report Writing Room 38 per shift
Patrol Special Event Storage	0	0	0	0	1	1	10	10	100	0	100	100	100	Storage for Patrol Special Event Gear
Patrol Briefing Room	0	0	0	1	1	1	30	25	750	610	750	750	750	Equipped w/ audio/video equipment Room for 8-18x people; Table w/ extra chairs
Report Writing Room	0	0	0	8	12	12	8	8	64	835	768	768	768	OPEN (75 Patrol) 12x Shared/shift small workstations; standing capable desks w/ integral file cabinets, storage, docking stations
Patrol Phone Room	0	0	0	0	1	1	5	6	30	0	30	30	30	w/ workstation; for private conversations away from open report writing room
File Area	0	0	0	0	6	6	2	5	10	40	60	60	60	Within Report Writing Room Cabinet space
Large Evidence Room	0	0	0	0	0	0	18	26	468	210	0	0	0	Centralized Evidence for Option C, no space needed
Group Total	88	88	88			28				2,451	3,220	3,220	3,220	
Armory/Weapons														
Armory/ammunition/weapons	0	0	0	1	1	1	20	22	440	130	440	440	440	Workstations (x4) w/power bench, storage, gun safe, room for (2) mechanics; tool chests Shared with Special Ops; section off with Chain Link
Ammunition Storage	0	0	0	0	0	0	0	0	0	0	0	0	0	SECURE Located within Armory
Weapons Maintenance	0	0	0	0	0	0	0	0	0	0	0	0	0	SECURE Located adjacent or w/in Armory
Group Total	0	0	0			1				130	440	440	440	
Booking														
Intox / DUI / In Custody Processing	0	0	0	0	1	1	12	18	216	0	216	216	216	
Soft Interview Room	0	0	0	2	4	4	10	10	100	162	400	400	400	Equipped w/ audio/video equipment Hard room w/mtl door w/thumb turn lock; close to detect. One separated from others; not near break room
Unisex Toilet	0	0	0	0	1	1	6	8	48	0	48	48	48	Penal quality fixtures and remote flush
Temporary Animal Services Kennel	0	0	0	0	1	1	5	5	25	0	25	25	25	Water, drainage, hose bib
Group Total	0	0	0			7				162	689	689	689	
SUBTOTAL	88	88	88							2,743	4,349	4,349	4,349	
GENERAL CIRCULATION (25%)										0	1,087	1,087	1,087	
TOTAL SQUARE FOOTAGE (Patrol)										2,743	5,436	5,436	5,436	

Space / Room Use	Staffing Requirements			Space Requirements			Space Size			Total Required Square Footage			Updated 04/16/18	Comments
	Exist	2019	2049	Exist	2019	2049	W	L	Area	Exist	2019	2049		
Department: Investigations														
Major Crimes Unit (MCU)														
<i>Suite; Reports to Investigations Commander</i>														
MCU Sergeant	1	1	1	1	1	1	10	12	120	0	120	120	120	S. Office (Private); desk, computer, files
MCU Detective	7	10	10	7	10	10	8	8	64	0	640	640	640	M./S. Cube; open workstations w/in suite
Supplies/Copy	0	0	0	0	1	1	8	10	80	0	80	80	80	80 Copy Machine, supplies, cabinets, countertops
MCU Evidence Tech Station	1	1	1	0	1	1	12	18	216	0	216	216	216	W/in MCU suite
MCU Digital Evidence Detective Workstation	1	1	1	0	1	1	12	16	192	0	192	192	192	Counters around perimeter; workspace; extra cooling
MCU Evidence Processing/Storage	0	0	0	1	1	1	26	30	780	0	780	780	780	W/in MCU suite
MCU Interview Rooms	0	0	0	2	2	2	10	10	100	0	200	200	200	Audio/Visual; soft interview; 3-4 people
MCU Briefing	0	0	0	1	1	1	16	25	400	0	400	400	400	7-10 People at one time
MCU Storage	0	0	0	0	1	1	8	8	64	0	64	64	64	Storage for Food, Bottled Water, etc. for up to 72 hours in emergency; small closet with lock
Existing MCU Building Area	0	0	0	0	0	0	0	0	0	3,100	0	0	0	Existing Building SF; includes all areas above (Includes Circulation)
Group Total	10	13	13			19				3,100	2,692	2,692	2,692	
Drug Task Force														
Investigations Commander	1	1	1	1	1	1	14	22	308	0	308	308	308	L. Office; small meeting capabilities
Financial Investigators	2	2	2	2	2	2	14	22	308	0	616	616	616	L. Office; small meeting capabilities; storage; paper
Detectives	5	5	8	5	5	8	10	10	100	0	500	800	800	800 Open Office with M. Cubes (10x10)
Sergeant	1	1	1	1	1	1	10	18	180	0	180	180	180	M. Office w/visitor chairs
Administrative Assistants	2	2	2	2	2	2	10	14	140	0	280	280	280	M. Office
K9 Training Room	0	0	0	1	1	1	12	12	144	0	144	144	144	Space for K-9 training, exercises, and gear
Conference/Briefing Room	0	0	0	1	1	1	18	40	720	0	720	720	720	20-24 people seated; up to 30-40 people sitting/standing
Vehicle Maintenance Storage	0	0	0	1	1	1	10	12	120	0	120	120	120	Car maintenance, tools, batteries
Washer/Dryer	0	0	0	1	1	1	5	10	50	0	50	50	50	W/D Closet
Faraday Box	0	0	0	0	0	0	2	2	4	0	0	0	0	0 Box can be located within evidence, set on a counter no special room needed
Evidence Lockers	0	0	0	1	3	3	2	3	6	0	18	18	18	18 Lockers for Temporary Evidence Storage
Cash Safe (Evidence)	0	0	0	1	1	1	2	3	6	0	6	6	6	6 Safe for Cash Storage
Evidence Processing	0	0	0	1	1	1	14	20	280	0	280	280	280	280 Workspace for evidence processing; adjacent evidence lockers
Break Room/Kitchen	0	0	0	1	1	1	15	18	270	0	270	270	270	270 Need separate break space from the rest of the Sheriff's Office; kitchen with fridge/freezer, microwave, commercial sink; tables and chairs
Gear Storage	0	0	0	1	1	1	10	12	120	0	120	120	120	120 secure cabinets
Secure File Storage	0	0	0	1	1	1	12	15	180	0	180	180	180	180 Secure; sep alarm;
Archive Storage	0	0	0	1	1	1	10	12	120	0	120	120	120	120 Secure; sep alarm; 10 years of records
Storage	0	0	0	1	1	1	10	12	120	0	120	120	120	120 Adjacent to Secure File Storage; stats, bills, etc.
Server	0	0	0	0	0	0	0	0	0	0	0	0	0	0 (1) Rack- Included with IT in Sheriff's Office Server Room
Copy/Print/Supply	0	0	0	1	1	1	10	10	100	0	100	100	100	100 Needs to be in secure location; no after hours access by cleaning staff
Mailboxes	0	0	0	1	14	14	1	1	1	0	14	14	14	14 14x mailboxes
Existing Facilities	0	0	0	0	0	0	0	0	0	8,000	0	0	0	0 All existing DTF spaces above are included here. (Includes Circulation)
Group Total	11	11	14			43				8,000	4,146	4,446	4,446	
SUBTOTAL	21	24	27							11,100	6,838	7,138	7,138	
GENERAL CIRCULATION (25%)										0	1,710	1,785	1,785	
TOTAL SQUARE FOOTAGE (Investigations)										11,100	8,548	8,923	8,923	

Space / Room Use	Staffing Requirements			Space Requirements			Space Size			Total Required Square Footage			Updated 04/16/18	Comments
	Exist	2019	2049	Exist	2019	2049	W	L	Area	Exist	2019	2049		
Department: Special Operations														
Tactical Detectives Unit (TDU) / UASI														
<i>Near IT</i>														
Tactical Detectives Unit (TDU) Detectives	4	4	8	4	4	8	8	8	64	683	256	512	512	M./S. Cubes in TDU Suite
Tactical Detectives Unit (TDU) Sergeant	1	1	1	1	1	1	10	14	140	170	140	140	140	M. Office (Private)
Tactical Detectives Unit (TDU) Storage	0	0	0	1	1	1	14	20	280	0	280	280	280	Electronics; storage for cameras, tools, equipment
Tactical Detectives Unit (TDU) Server	0	0	0	0	0	0	10	10	100	169	0	0	0	1x rack; included in IT Server Space
TDU Server Workstation	1	1	1	1	1	1	12	16	192	0	192	192	192	M/S Cube for workspace off of Server Room Extra A/C; adjacent to IT and Server Room
Urban Areas Security Initiative (UASI/Drones)	0	0	0	1	1	1	10	12	120	0	120	120	120	Computer storage for video equipment, drones; tied to TDU storage
Group Total	6	6	10			12					1,022	988	1,244	1,244
K-9 Unit														
<i>Reports to Patrol Sergeant</i>														
K-9 Master Handler	1	1	1	1	1	1	10	12	120	0	120	120	120	S. Office; workstation and storage for K-9 equip
K-9 Workstation	3	3	3	1	2	2	8	8	64	0	128	128	128	M./S. Cube
K-9 Records and Equipment	0	0	0	1	1	1	12	20	240	260	240	240	240	K-9 Storage; equipment; K-9 grooming station shelves for dog gear, food storage
K-9 Drying Room	0	0	0	0	1	1	5	5	25	0	25	25	25	Drying room for bite suits
K-9 Kennel	0	0	0	2	2	2	5	5	25	0	50	50	50	(2) Kennels
Group Total	4	4	4			7				260	563	563	563	
Traffic														
<i>Suite with Marine and CVE</i>														
Traffic Investigators	4	4	4	4	4	4	8	8	64	0	256	256	256	M./S. Cube; open workstations; combined with Marine and CVE in Suite
Traffic Sergeant	1	1	1	1	1	1	10	14	140	0	140	140	140	M. Office (Private)
Group Total	5	5	5			5				0	396	396	396	
Marine														
<i>Suite with Traffic and CVE</i>														
Marine Deputies	4	4	4	4	4	4	8	8	64	0	256	256	256	M./S. Cubes; open workstations combined with Traffic and CVE in Suite
Marine Sergeant	1	1	1	1	1	1	10	14	140	0	140	140	140	M. Office (Private)
Marine Storage	0	0	0	1	1	1	10	10	100	0	100	100	100	Storage for equipment; leaflets, flyers, stickers, life jackets, buoys
Group Total	5	5	5			6				0	496	496	496	
<i>*Marine is currently off site; no existing areas are known.</i>														
Commercial Vehicles (CVE)														
<i>Suite with Marine and Traffic</i>														
Commercial Vehicles (CVE)	1	1	1	1	1	1	8	8	64	0	64	64	64	M./S. Cube; open workstation combined with Traffic and Marine in Suite (spends most of time in field)
Group Total	1	1	1			1				0	64	64	64	
SWAT, TEMS, Negotiations														
Special Weapons and Tactics (SWAT) Office	1	1	1	1	1	1	10	14	140	0	140	140	140	M. Office (Private)
SWAT Workstation	1	1	1	1	1	1	8	8	64	0	64	64	64	M./S.. Cube; open workstation off of Special Ops
Special Weapons and Tactics (SWAT) Storage	0	0	0	1	1	1	10	12	120	0	120	120	120	Equipment storage
Negotiations and TEMS	6	6	6	2	2	2	8	8	64	0	128	128	128	M/S Cubes; away from patrol Report Writing; suite Cubes shared between Negotiations and TEMS
Shared Conference Room/ Training for Tact. Medics	0	0	0	0	1	1	18	26	468	0	468	468	468	Conf Room for 10 people; counter space
Training Records	0	0	0	0	1	1	8	8	64	0	64	64	64	Workstation for storage of training records
Group Total	8	8	8			7				0	984	984	984	

Space / Room Use	Staffing Requirements			Space Requirements			Space Size			Total Required Square Footage			Updated 04/16/18	Comments
	Exist	2019	2049	Exist	2019	2049	W	L	Area	Exist	2019	2049		
Special Operations Commander														
Special Operations Commander	1	1	1	1	1	1	14	22	308	285	308	308	308	L. Office (Private) desk; space for small table/chairs; storage
<i>Group Total</i>	1	1	1			1				285	308	308	308	
Special Ops Support Spaces														
MRT Storage	0	0	0	1	1	1	8	16	128	64	128	128	128	Storage for chemical agents, magazine, less lethal ammo, etc.
Air Support Unit (ASU)	0	0	0	0	0	0	0	0	0	0	0	0	0	No Space Needs
Copy/Supply/Work	0	0	0	1	2	2	12	16	192	370	384	384	384	Copy Machine; workspace; counter w/ island; cabinets x2 locations; share w/ Patrol and Events
Armory	0	0	0	0	0	0	20	22	440	50	0	0	0	Workstations (x4) w/power bench, storage, gun safe, room for (2) mechanics; tool chests Shared and Included in Patrol
Conference Room	0	0	0	1	1	1	16	30	480	405	480	480	480	10-12 People Share w/Patrol and Events
Explosives	0	0	0	2	2	2	3	3	9	10	18	18	18	Located in MRT Storage
<i>Group Total</i>	0	0	0			6				899	1,010	1,010	1,010	
SUBTOTAL	30	30	34							2,466	4,809	5,065	5,065	
GENERAL CIRCULATION (25%)										0	1,202	1,266	1,266	
TOTAL SQUARE FOOTAGE (Special Operations)										2,466	6,011	6,331	6,331	

Space / Room Use	Staffing Requirements			Space Requirements			Space Size			Total Required Square Footage			Updated 04/16/18	Comments
	Exist	2019	2049	Exist	2019	2049	W	L	Area	Exist	2019	2049		
Department: Unallocated Existing Spaces/Circulation														
These spaces are located on the floor plans given, but existing use is unknown and needs to be confirmed.														
Unallocated Existing Spaces														
East Precinct Unallocated Spaces	0	0	0	1	1	1	0	0	0	3,000	0	0	0	Unknown Office, Conference, and Storage Space
East Precinct Existing Circulation	0	0	0	1	1	1	0	0	0	1,840	0	0	0	East Precinct
Existing West Precinct Building Circulation (Patrol, Special Ops, and Special Events)	0	0	0	0	0	0	0	0	0	6,775	0	0	0	Existing Circulation Area at West Precinct
<i>Group Total</i>	0	0	0							11,615	0	0	0	
SUBTOTAL	0	0	0							11,615	0	0	0	
GENERAL CIRCULATION (25%)										0	0	0	0	
TOTAL SQUARE FOOTAGE (Unknown Spaces)										11,615	0	0	0	

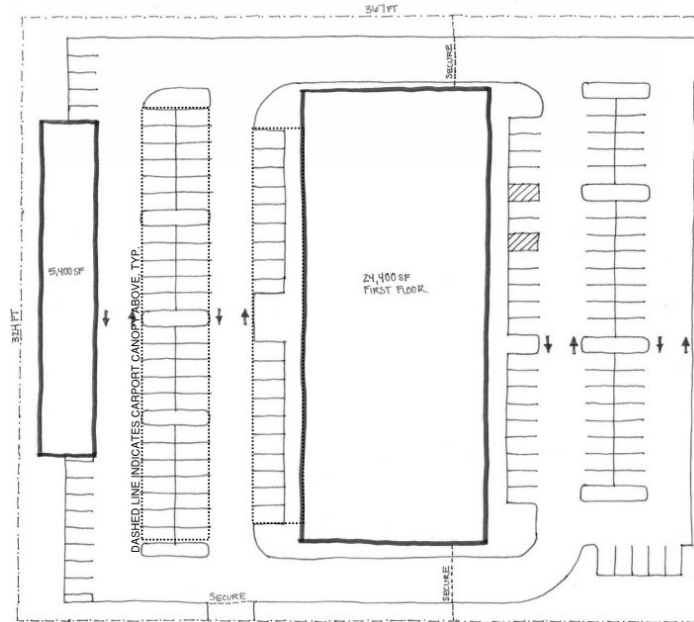
Space / Room Use	Staffing Requirements			Space Requirements			Space Size			Total Required Square Footage			Updated 04/16/18	Comments
	Exist	2019	2049	Exist	2019	2049	W	L	Area	Exist	2019	2049		
Department: Site Requirements														
Public Parking														
Public Parking - Sheriff's Office	0	0	0	0	30	30	9	18	162	0	4,860	4,860	4,860	PUBLIC
Public Parking - Community Rm/Training	0	0	0	0	30	35	9	18	162	0	4,860	5,670	5,670	PUBLIC
Group Total						65				0	9,720	10,530	10,530	
Secured Parking														
Personal Vehicle Parking	0	0	0	5	35	35	10	20	200	1,000	7,000	7,000	7,000	Conduit for future elect. charging station Prefer secured staff parking; enough for shift overlaps
DTF Parking	0	0	0	20	20	20	10	20	200	4,000	4,000	4,000	4,000	Secure; provide 2-3 min. covered spaces
Squad Vehicle Parking (Traffic, Marine, Patrol)	0	0	0	30	45	45	10	20	200	6,000	9,000	9,000	9,000	squad vehicle spaces; Sheltered parking Power, WIFI required
TDU Cool Cars	0	0	0	4	4	4	10	20	200	800	800	800	800	Covered/Enclosed is preferable
MCU Van	0	0	0	1	1	1	10	20	200	200	200	200	200	Secure, enclosed
MRT Van	0	0	0	1	1	1	10	20	200	200	200	200	200	Secure; doesn't need to be covered Power required
Evidence Van (Small Van)	0	0	0	1	1	1	10	20	200	200	200	200	200	Located Near Evidence , enclosed
Logistics SUV (Expedition)	0	0	0	1	1	1	10	20	200	200	200	200	200	Located Near Logistics , enclosed
Forklift	0	0	0	1	1	2	10	5	50	50	50	100	100	Located Near Logistics , enclosed; need electrical
Scissor Lift	0	0	0	1	1	1	10	20	200	200	200	200	200	Located Near Logistics , enclosed; need electrical
Pallet Jack	0	0	0	2	2	2	4	6	24	48	48	48	48	Located Near Logistics , enclosed
Bearcat Armored Vehicle Parking	0	0	0	2	2	2	14	24	336	672	672	672	672	Secure/Enclosed; power required
Boat Storage (Including Inflatables)	0	0	0	4	4	4	14	35	490	1,960	1,960	1,960	1,960	Secure/Enclosed
Gator Storage	0	0	0	4	4	4	8	12	96	384	384	384	384	Need (2) flatbed trailer spaces Secure/Covered; can be stored outside
Jet Ski Storage	0	0	0	2	2	2	14	6	84	168	168	168	168	Secure/Enclosed; includes jet ski trailer; 2 on one trailer side by side
Mobile Response Team Trailer Parking	0	0	0	1	1	1	12	30	360	360	360	360	360	Power required
Search and Rescue Team Trailer Parking	0	0	0	1	1	1	12	30	360	360	360	360	360	Power required
Speed Trailer	0	0	0	1	1	1	12	25	300	300	300	300	300	Power required
Explorer's Trailer	0	0	0	1	1	1	12	25	300	300	300	300	300	Covered; can be stored outside
DTF Raid Van	0	0	0	1	1	1	10	20	200	200	200	200	200	Secure/Covered; power required
K-9 Equipment Trailer	0	0	0	1	1	1	12	25	300	300	300	300	300	Covered; can be stored outside
Bomb Trailer	0	0	0	1	1	1	12	20	240	240	240	240	240	Power required; dual axle heavy tank w/arm; covered currently stored at VPD West;
Bomb Truck (Chevy Truck)	0	0	0	1	1	1	10	20	200	200	200	200	200	
Emergency Generator	0	0	0	0	1	1	12	20	240	0	240	240	240	Includes 4'-0" clearances, concrete pad req'd
Trash/Recycling	0	0	0	1	2	2	10	20	200	200	400	400	400	Verify trash requirements w/ provider
Break Room Patio	0	0	0	0	1	1	10	15	150	0	150	150	150	Secure enclosed space off Break Room
Group Total	0	0	0			137				18,542	28,132	28,182	28,182	
SUBTOTAL	0	0	0			202				18,542	37,852	38,712	38,712	
GENERAL CIRCULATION (195%)										36,157	73,811	75,488	75,488	
TOTAL SQUARE FOOTAGE (Site Requirements)										54,699	111,663	114,200	114,200	

APPENDIX B: COST DOCUMENTS

A large, light gray arrow graphic that originates from the bottom left corner and points diagonally upwards and to the right, extending towards the top right corner of the page. The arrow is composed of a single continuous shape.

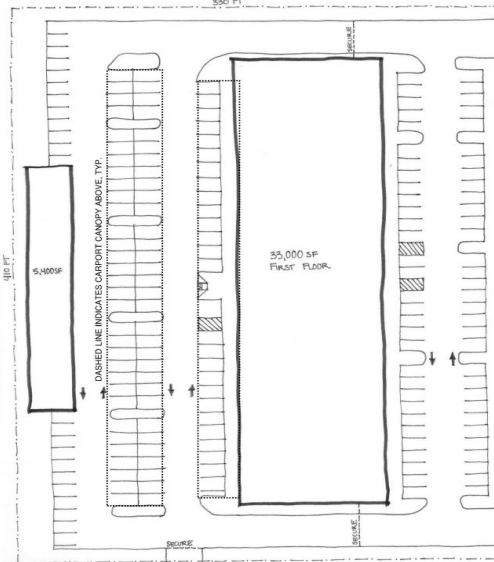
THIS PAGE INTENTIONALLY LEFT BLANK

CLARK COUNTY SHERIFF'S OFFICE OPTION A Statement of Probable Cost



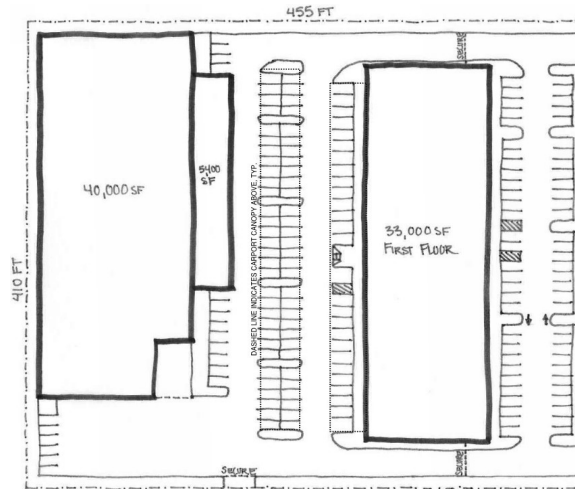
	UNIT AREA		\$/UNIT	TOTAL \$
Mob, survey, clearing, grubbing, erosion control	67,128	SF	\$0.60	40,277
Site excavation dig & haul off-site	2,100	BCY	\$27.00	\$56,692
Structural fill crushed rock	4,190	TN	\$24.00	100,558
Main building sheriff's office	46,485	SF	\$300.00	\$13,945,500
Secondary building secure vehicle storage	5,400	SF	\$185.00	\$999,000
Parking cover carport canopy	14,500	SF	\$90.00	\$1,305,000
Parking lot asphalt/curbs	1,074	TN	\$94.30	101,281
Plaza color conc/water feature/benches	2,500	SF	\$30.00	75,000
Sidewalk base rock + concrete	5,600	SF	\$11.50	\$64,400
Landscaping planters/lawn	20,000	SF	\$4.60	92,000
Utilities allowance	118,908	SF	\$1.20	\$142,690
Demo site allowance	118,908	SF	\$0.25	\$29,727
Security fencing 8'-chain-link/pvc coated/slats	900	LF	\$32.00	\$28,800
Abatement -not included -				
Street improvements -not included -				
Special foundations -not included -				
SUBTOTAL				16,980,924
			Contingency: 20.00%	3,396,185
			Inflation (1 year): 5.00%	1,018,855
OPTION A TOTAL				21,395,964

CLARK COUNTY SHERIFF'S OFFICE OPTION B Statement of Probable Cost



	UNIT AREA		\$/UNIT	TOTAL \$
Mob, survey, clearing, grubbing, erosion control	73,128	SF	\$0.60	43,877
Site excavation dig & haul off-site	2,364	BCY	\$27.00	\$63,833
Structural fill crushed rock	4,995	TN	\$24.00	119,880
Main building sheriff's office/admin	65,843	SF	\$300.00	\$19,752,900
Secondary building secure vehicle storage	5,400	SF	\$185.00	\$999,000
Parking cover carport canopy	21,500	SF	\$90.00	\$1,935,000
Parking lot asphalt/curbs	1,182	TN	\$94.30	111,457
Plaza color conc/water feature/benches	2,500	SF	\$30.00	75,000
Sidewalk base rock + concrete	8,500	SF	\$11.50	\$97,750
Landscaping planters/lawn	20,000	SF	\$4.60	92,000
Utilities allowance	135,300	SF	\$1.20	\$162,360
Demo site allowance	135,300	SF	\$0.25	\$33,825
Security fencing 8'-chain-link/pvc coated/slats	935	LF	\$32.00	\$29,920
Abatement -not included -				
Street improvements -not included -				
Special foundations -not included -				
SUBTOTAL				23,516,802
Contingency:			20.00%	4,703,360
Inflation (1 year):			5.00%	1,411,008
OPTION B TOTAL				29,631,171

CLARK COUNTY SHERIFF'S OFFICE OPTION C Statement of Probable Cost



	UNIT AREA		\$/UNIT	TOTAL \$
Mob, survey, clearing, grubbing, erosion control	77,424	SF	\$0.60	46,454
Site excavation dig & haul off-site	2,568	BCY	\$27.00	\$69,333
Structural fill crushed rock	7,828	TN	\$24.00	187,878
Main building sheriff's office/admin	65,257	SF	\$300.00	\$19,577,100
Secondary building evidence/logistics	39,850	SF	\$200.00	\$7,970,000
Secondary building secured vehicle storage	5,400	SF	\$185.00	\$999,000
Parking cover carport canopy	21,500	SF	\$90.00	\$1,935,000
Parking lot asphalt/curbs	1,233	TN	\$94.30	116,303
Plaza color conc/water feature/benches	2,500	SF	\$30.00	75,000
Sidewalk base rock + concrete	11,500	SF	\$11.50	\$132,250
Landscaping planters/lawn	23,000	SF	\$4.60	105,800
Utilities allowance	186,550	SF	\$1.20	\$223,860
Demo site allowance	186,550	SF	\$0.25	\$46,638
Security fencing 8'-chain-link/pvc coated/slats	1,200	LF	\$32.00	\$38,400
Abatement -not included -				
Street improvements -not included -				
Special foundations -not included -				
SUBTOTAL				31,523,016
		Contingency:	20.00%	6,304,603
		Inflation (1 year):	5.00%	1,891,381
OPTION C TOTAL				39,719,001

THIS PAGE INTENTIONALLY LEFT BLANK

MACKENZIE.

For more information please contact:

Jeff Rhys Humphreys
Director of Architecture
JHumphreys@mcknze.com

RiverEast Center | 1515 SE Water Ave., Suite 100 | Portland, OR 97214
503.224.9560 | mcknze.com
Portland, OR ■ Vancouver, WA ■ Seattle, WA