

Official SAMPLE Ballot
General and Special Election
November 06, 2018

Clark County, Washington

Precinct *SAMPLE*

Note to Voters

This sample ballot contains **all** measures that will appear in the November 6, 2018 General & Special Election. Only measures that apply to **your** precinct will appear on your ballot.

For this election, no postage is required when returning your ballot.

Seven 24-hr drop boxes are open beginning October 20 until 8:00 pm on Election Day.

Additional assistance is available to any voter who is unable to vote their ballot due to disability. Special voting equipment is available at the Clark County Elections Office for those wishing to vote their ballot without assistance.

For more information about voting or voter registration contact the Elections Department.

Who donates to campaigns?

View contributors for candidates and measures
Public Disclosure Commission
www.pdc.wa.gov
Toll Free (877) 601-2828

Instructions



Correct

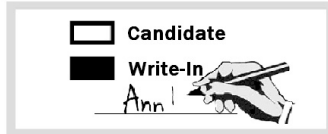


Incorrect

Use a blue or black pen to completely fill in the box to the left of your choice.

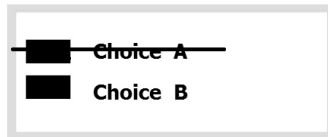
Vote for one choice for each contest or ballot measure. If you vote for more than one choice for that contest or ballot measure, no votes will be counted for that contest or ballot measure.

To vote for a write-in candidate:



Completely fill in the box to the left of the words "Write-in" and write the name of the candidate on the line.

To correct a mistake:



Draw a line through the entire candidate's name or measure choice as shown above. You then have the option of marking another choice.

Who donates to campaigns?

View contributors for candidates and measures
Public Disclosure Commission
www.pdc.wa.gov
Toll Free (877) 601-2828

WHEN RETURNING YOUR BALLOT

Postage is prepaid for this election. No postage is required when mailing your ballot. Ballots need to be mailed on or before Election Day, Tuesday, November 6. Your ballot must be postmarked no later than Election Day, so check the pick-up schedule on the mailbox or confirm Election Day hours with the post office.

If you return your ballot to a drop site location, it must be returned by 8:00 pm on Tuesday, November 6, for it to be counted.

▼ Begin Voting Here ▼

State Measures

Initiatives to the People

Initiative Measure No. 1631

Initiative Measure No. 1631 concerns pollution. This measure would charge pollution fees on sources of greenhouse gas pollutants and use the revenue to reduce pollution, promote clean energy, and address climate impacts, under oversight of a public board.

Should this measure be enacted into law?

- Yes
- No

Initiative Measure No. 1634

Initiative Measure No. 1634 concerns taxation of certain items intended for human consumption. This measure would prohibit new or increased local taxes, fees, or assessments on raw or processed foods or beverages (with exceptions), or ingredients thereof, unless effective by January 15, 2018, or generally applicable.

Should this measure be enacted into law?

- Yes
- No

Sample Ballot 12002910100087

900000001120

Sample Ballot

2973031280

Vote Both Sides

Official SAMPLE Ballot
General and Special Election
November 06, 2018

Clark County, Washington

Precinct *SAMPLE*

Initiative Measure No. 1639
Initiative Measure No. 1639 concerns firearms. This measure would require increased background checks, training, age limitations, and waiting periods for sales or delivery of semiautomatic assault rifles; criminalize noncompliant storage upon unauthorized use; allow fees; and enact other provisions.

Should this measure be enacted into law?
 Yes
 No

Initiatives to the Legislature

Initiative Measure No. 940
Initiative Measure No. 940 concerns law enforcement. This measure would require law enforcement to receive violence de-escalation, mental-health, and first-aid training, and provide first-aid; and change standards for use of deadly force, adding a "good faith" standard and independent investigation.

Should this measure be enacted into law?
 Yes
 No

Advisory Votes

Advisory Vote No. 19
Engrossed Second Substitute
Senate Bill 6269
The legislature expanded, without a vote of the people, the oil spill response and administration taxes to crude oil or petroleum products received by pipeline, costing \$13,000,000 over ten years for government spending.

This tax increase should be:
 Repealed
 Maintained

READ: Each candidate for partisan office may state a political party that he or she prefers. A candidate's preference does not imply that the candidate is nominated or endorsed by the party, or that the party approves of or associates with that candidate.

Initiatives to the Legislature

U.S. Senator
Vote For One
 Maria Cantwell
(Prefers Democratic Party)
 Susan Hutchison
(Prefers Republican Party)
 Write-in

U.S. Representative
3rd Congressional District
Vote For One
 Jaime Herrera Beutler
(Prefers Republican Party)
 Carolyn Long
(Prefers Democratic Party)
 Write-in

State Legislative Partisan Offices

State Representative
14th Legislative District - Position No. 1
Vote For One
 Chris Corry
(Prefers Republican Party)
 Sasha Bentley
(Prefers Democratic Party)
 Write-in

State Representative
14th Legislative District - Position No. 2
Vote For One
 Gina Mosbrucker
(Prefers Republican Party)
 Liz Hallock
(Prefers Democratic Party)
 Write-in

State Representative
17th Legislative District - Position No. 1
Vote For One
 Vicki Kraft
(Prefers Republican Party)
 Tanisha Harris
(Prefers Democratic Party)
 Write-in

State Representative
17th Legislative District - Position No. 2
Vote For One
 Paul Harris
(Prefers Republican Party)
 Damion E Jiles, Sr.
(Prefers Democratic Party)
 Write-in

Sample Ballot 12002910200094

900000001217

Sample Ballot

2973031280

Vote Both Sides

Official SAMPLE Ballot
General and Special Election
November 06, 2018

Clark County, Washington

Precinct *SAMPLE*



Sample Ballot22002910300086

900000001120



Sample Ballot

2973031280



State Representative
18th Legislative District - Position No. 1
Vote For One

- Brandon Vick
(Prefers Republican Party)
- Chris Thobaben
(Prefers Democratic Party)
- Write-in

State Representative
18th Legislative District - Position No. 2
Vote For One

- Kathy Gillespie
(Prefers Democratic Party)
- Larry A. Hoff
(Prefers Republican Party)
- Write-in

State Representative
20th Legislative District - Position No. 1
Vote For One

- Richard DeBolt
(Prefers GOP Party)
- John Thompson
(Prefers Democratic Party)
- Write-in

State Representative
20th Legislative District - Position No. 2
Vote For One

- Ed Orcutt
(Prefers Republican Party)
- Brennan Bailey
(Prefers Democratic Party)
- Write-in

State Representative
49th Legislative District - Position No. 1
Vote For One

- Sharon Wylie
(Prefers Democratic Party)
- Write-in

State Representative
49th Legislative District - Position No. 2
Vote For One

- Monica Jurado Stonier
(Prefers Democratic Party)
- Write-in

County Partisan Offices

County Assessor
Vote For One

- Peter Van Nortwick
(Prefers Republican Party)
- Darren Wertz
(Prefers Republican Party)
- Write-in

County Auditor
Vote For One

- Greg Kimsey
(Prefers GOP Party)
- Write-in

County Clerk
Vote For One

- Barbara L. Melton
(Prefers Democratic Party)
- Scott G Weber
(Prefers Republican Party)
- Write-in

**County Council
Chair (At-Large)**
Vote For One

- Eileen Quiring
(Prefers Republican Party)
- Eric K. Holt
(Prefers Democratic Party)
- Write-in

**County Council
Councilor - District No. 1**
Vote For One

- Temple Lentz
(Prefers Democratic Party)
- Jeanne E. Stewart
(Prefers Republican Party)
- Write-in

**County Council
Councilor - District No. 2**
Vote For One

- Julie Olson
(Prefers Republican Party)
- Elisabeth Veneman
(Prefers Republican Party)
- Write-in

County Prosecuting Attorney
Vote For One

- Tony Golik
(Prefers Democratic Party)
- Write-in

County Sheriff
Vote For One

- Chuck E. Atkins
(Prefers Republican Party)
- Write-in

County Treasurer
Vote For One

- Alishia Topper
(States No Party Preference)
- Robert Hinds
(States No Party Preference)
- Write-in

Vote Both Sides

Official SAMPLE Ballot
General and Special Election
November 06, 2018

Clark County, Washington

Precinct *SAMPLE*

**State Supreme Court
Nonpartisan Offices**

State Supreme Court
Justice - Position No. 2
Vote For One
 Susan Owens
 Write-in

State Supreme Court
Justice - Position No. 8
Vote For One
 Nathan Choi
 Steve Gonzalez
 Write-in

State Supreme Court
Justice - Position No. 9
Vote For One
 Sheryl Gordon McCloud
 Write-in

Continue Voting on the Other Side

State Court of Appeals
Division 2, District 3
Judge - Position No. 1
Vote For One
 Rich Melnick
 Write-in

**County District Court
Nonpartisan Offices**

District Court
Judge - Department No. 1
Vote For One
 Kristen L. Parcher
 Write-in

District Court
Judge - Department No. 2
Vote For One
 Chad E. Sleight
 Write-in

District Court
Judge - Department No. 3
Vote For One
 Darvin J. Zimmerman
 Write-in

District Court
Judge - Department No. 4
Vote For One
 Sonya Langsdorf
 Write-in

District Court
Judge - Department No. 5
Vote For One
 Kelli E. Osler
 Write-in

District Court
Judge - Department No. 6
Vote For One
 John P. Hagensen
 Write-in

Local Nonpartisan Offices

City of Vancouver
Council - Position No. 1
Unexpired Three Year Term
Vote For One
 Laurie Lebowsky
 Sarah Fox
 Write-in

Public Utility District No. 1 of
Clark County
Commissioner - District No. 1
Vote For One
 Jim Malinowski
 Sherry Erickson
 Write-in

Local Measure

City of Washougal
Proposition No. 8
**Adoption of the Council/Manager
Form of Government within the
City of Washougal**

Shall the City of Washougal adopt the
Council/Manager form of government
and abandon the Council/Mayor form
of government? The adoption of the
Council/Manager form of government
would not affect the City's eligibility to
be governed under Title 35A of the
Revised Code of Washington.

For Adoption of the
Council/Manager Form
of Government
 Against Adoption of the
Council/Manager Form
of Government

Sample Ballot 22002910400093
900000001217

Sample Ballot

2973031280

Vote Both Sides

Official **SAMPLE** Ballot
 General and Special Election
 November 06, 2018

Clark County, Washington

Precinct **SAMPLE**

Local Measure

**Green Mountain
 School District No. 103
 Proposition No. 1**
 Capital Levy to Modernize, Renovate and
 Improve Green Mountain School

The Board of Directors of Green Mountain
 School District No. 103 adopted
 Resolution No. 2018-08, concerning a
 proposition for a levy for capital
 improvements. This proposition would
 authorize the District to levy the following
 excess taxes, on all taxable property
 within the District, to modernize, renovate
 and improve Green Mountain School
 (upgrading sidewalks, HVAC, lighting,
 bathrooms, fire alarm, parking lot;
 replacing roof, windows, doors;
 renovating cottage; installing covered
 play area):

Collection Year	Estimated Levy Rate/\$1,000 Assessed Value	Levy Amount
2019	\$1.35	\$250,000
2020	\$1.23	\$250,000
2021	\$1.12	\$250,000
2022	\$1.01	\$250,000
2023	\$0.93	\$250,000

all as provided in Resolution No. 2018-08.

Should this proposition be approved?

- Levy...Yes
- Levy...No

Local Measure

**East County Fire and Rescue
 Proposition No. 2
 Multiple Year Levy Lid Lift**
 The Board of East County Fire and
 Rescue adopted Resolution No.
 241-07172018 concerning a proposition
 to maintain and adequately fund District
 operations.

In order to maintain fire protection and
 emergency medical services and provide
 for firefighter safety, this proposition
 authorizes the District to restore its
 regular property tax levy to \$1.50 per
 \$1,000.00 of assessed valuation for
 collection in 2019 and authorizes annual
 increases of up to 6% for each of the
 succeeding five years. The maximum
 allowable levy in 2023 shall serve as the
 base for subsequent levy limitations as
 provided by Chapter 84.55 RCW.

Should this proposition be:

- Approved
- Rejected

End of Ballot

Sample Ballot32002910500085

900000001120

Sample Ballot

2973031280



Sample Ballot32002910600092

900000001314



This page intentionally left blank



2973031280

Sample Ballot