

MMWR Publication

October 25, 2017
Board of Health Meeting
Clark County Public Health

Derel Glashower, MPH
Epidemiologist





MMWR

- **MMWR = Morbidity and Mortality Weekly Report**
- Weekly online journal and “the voice of CDC”
- Widely read
 - 250,000 electronic subscribers
 - Website receives >23 million page views
- Rankings
 - 2nd in the subject category of Public, Environmental & Occupational Health
 - 1st of top 20 publications in Epidemiology

CDC = Centers for Disease Control and Prevention

Source of information: <https://www.cdc.gov/mmwr/about.html>



Clark County MMWR Report

Morbidity and Mortality Weekly Report (MMWR)

[CDC](#) > [MMWR](#)

Notes from the Field: Outbreak of Campylobacter jejuni Associated with Consuming Undercooked Chicken Liver Mousse – Clark County, Washington, 2016

Weekly / September 29, 2017 / 66(38);1027

Derel Glashower, MPH¹; Jennifer Snyder¹; Diane Welch, MS¹; Shannon McCarthy¹ ([View author affiliations](#))

<https://www.cdc.gov/mmwr/volumes/66/wr/mm6638a4.htm>

Article Metrics

Views equals page views
plus PDF downloads

Views: 1,896



Content of MMWR Report

Outbreak Details

- **Outbreak of *Campylobacter jejuni* in 2016**
 - 5 sick people identified
 - First reported by an illness complaint
 - All ate chicken liver mousse from a restaurant
 - Chicken livers were likely being undercooked
 - “Fingerprinting” of *Campylobacter* showed relatedness to samples from a previous chicken liver pate outbreak in OR



Content of MMWR Report

Public Health Action

- **Public Health Actions**
 - Closed the restaurant
 - Educated restaurant staff
 - Conducted study to identify the source of illness
 - Looked for more ill people*
 - Screened for ill restaurant workers*

*Not included in MMWR Publication



Value of this MMWR Report

- Highlights the value of illness complaint systems
- Shares information with the global Public Health community
- Demonstrates Clark County's outbreak response capabilities
- Good publication experience for the Public Health team

Influenza Update

October 25, 2017
Board of Health Meeting
Clark County Public Health

Derel Glashower, MPH
Epidemiologist

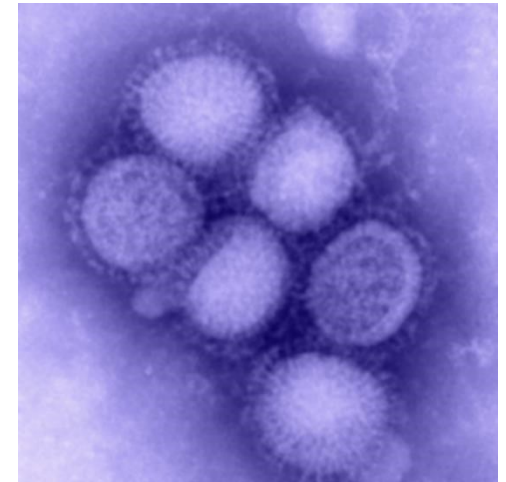




Influenza

What is it?

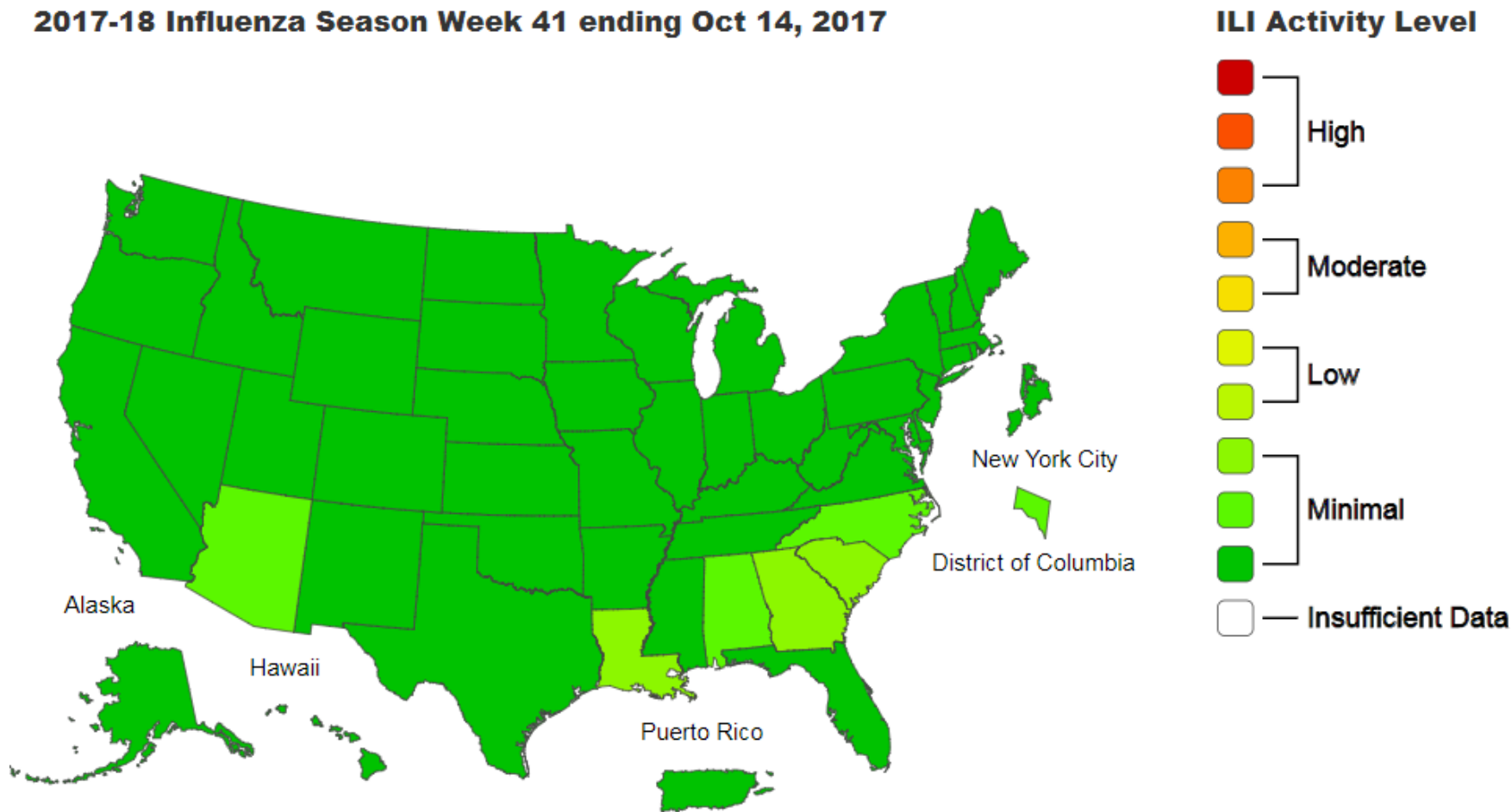
- Virus
 - 2 types – A and B
 - Antibiotics don't work
- Circulates every winter in the Northern Hemisphere
- Causes respiratory symptoms
 - Fever, cough, sore throat
- It's NOT:
 - The cold
 - A diarrheal illness





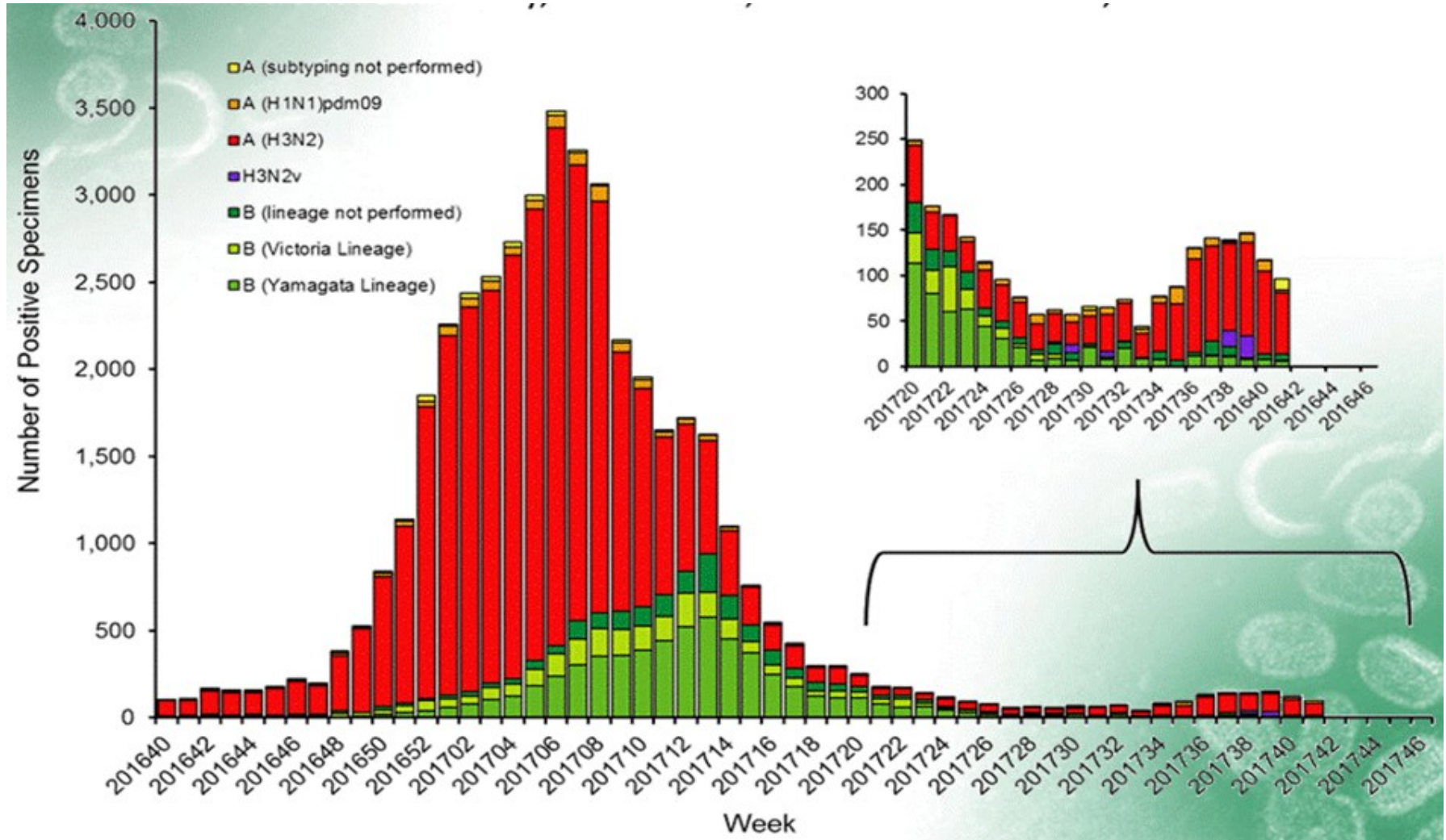
Influenza Surveillance *USA*

2017-18 Influenza Season Week 41 ending Oct 14, 2017





Influenza Surveillance USA





Influenza Surveillance *USA*

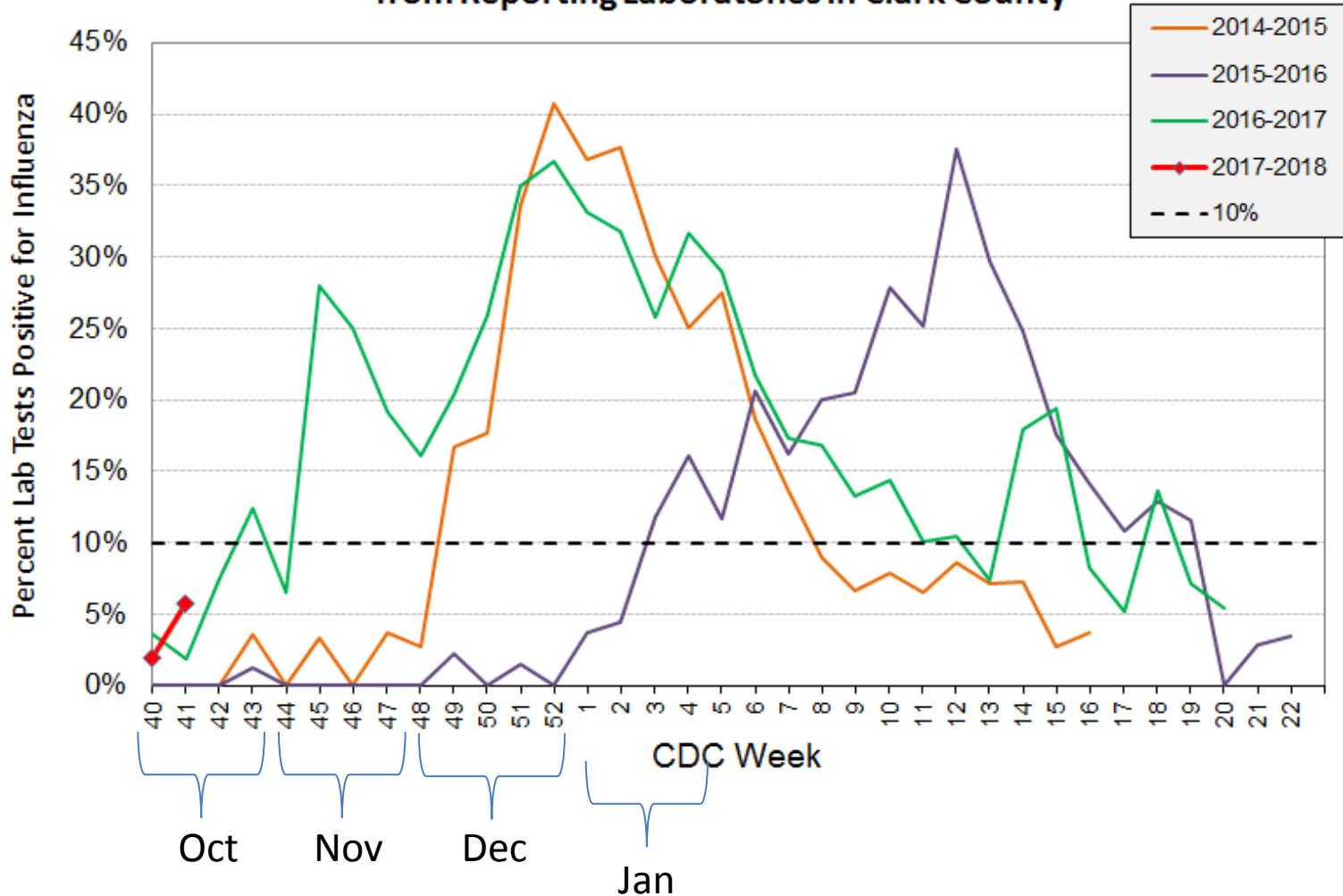
- Not much influenza activity in the USA (yet)
- H3N2 predominates
- Most typed H3N2 viruses are from clades contained in the seasonal vaccine
 - Suggests vaccine may be a good match to circulating viruses



Influenza Surveillance

Clark County

**Positivity Rate of Influenza Tests by Week
from Reporting Laboratories in Clark County**





Influenza Surveillance

Clark County

- Not much influenza activity (yet)
- 1 ILI outbreak in congregate setting
- 11 flu cases reported as of October 14
 - 10 A
 - 1 B



Influenza

What is Clark County Doing?

- Surveillance for Influenza
 - Weekly Reports posted on the web
- Educating Healthcare Providers
- News Releases and Social Media
 - Encourage vaccine and prevention measures
- Preparing Provider Advisories





Influenza

Actions Everyone Can Take

- Get vaccinated
 - Anyone >6 months of age
- Cover coughs and sneezes
- Wash hands often
- Stay home when sick
- Seek appropriate care





Questions

Derel Glashower, MPH, CPH

Clark County Public Health, Communicable Disease Program

derel.glashower@clark.wa.gov

(360) 397-8003