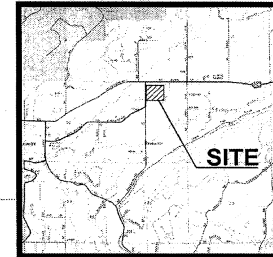


EXHIBIT A

AMBOY BAPTIST CHURCH

A Site Located In The N.E. ¼, Sec. 15, T. 5 N., R. 3 E., W.M.



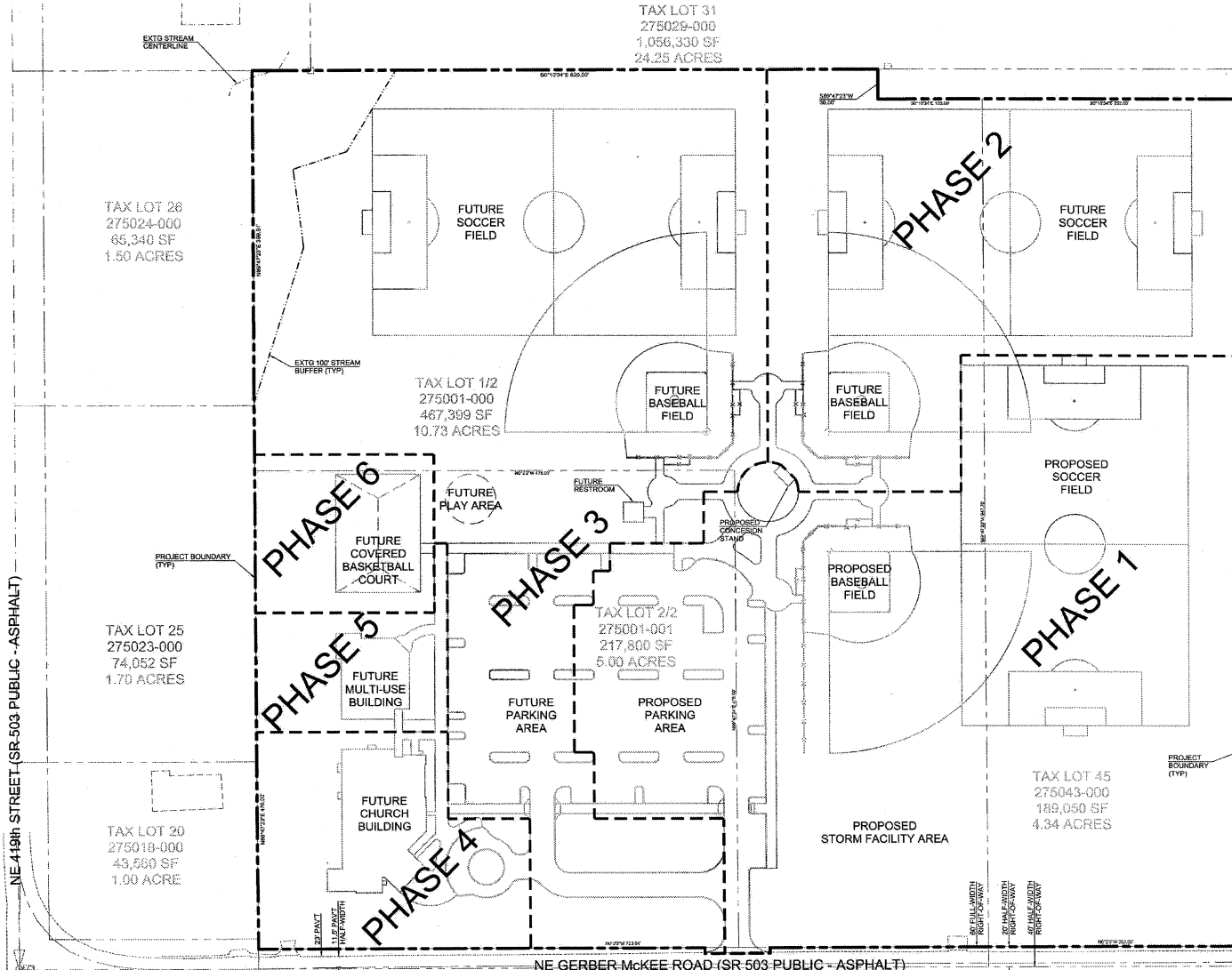
VICINITY MAP
NOT TO SCALE

TAX LOT 41
275039-000
577,606 SF
13.26 ACRES

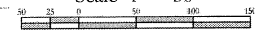
PHASING NOTES

- PHASE 1**
Baseball field/Soccer field 1 with associated 110 parking spaces and paths.
Build in 2010.
- PHASE 2**
Baseball field/Soccer field 2.
Build in 2011.
- PHASE 3**
Baseball field/Soccer field 3 with additional 88 parking spaces and paths.
Build in 2012.
- PHASE 4**
11,000 SF Church Building with associated paths and plaza.
Build in 2013.
- PHASE 5**
5,000 SF Multi-use Building with associated paths.
Build in 2014.
- PHASE 6**
Covered Basketball court with associated paths.
Build in 2015.

Phasing dates are shown as approximate only. Actual dates may be adjusted based on needs and available financing.



Scale 1" = 50'



300 W. 6th Street
Bellevue, WA 98007
206.466.4400
www.hdgdesign.com



PRELIMINARY PHASING PLAN FOR:
AMBOY BAPTIST CHURCH
A SITE LOCATED IN CLARK COUNTY, WASHINGTON

DESIGNED:	MEH
DRAWN:	CAD
CHECKED:	JAN
SCALE:	H: N/A V: N/A
	JULY 07, 2009 2821
SHEET	

SP3.0

E:\Planning\Projects\2011\Cad\Plan\10-000\Project\SP3.0.dwg, 7/13/2009, 4:12:21 PM, .epc