

THE LOWLANDS ON MOUNT JAGGY

PRELIMINARILY APPROVED AS LOTS OF GIDDINESS

1. ALL STORMWATER FACILITIES OUTSIDE OF COUNTY RIGHT-OF-WAY OR COUNTY PROPERTIES SHALL BE PRIVATELY OWNED AND OPERATED UNLESS OTHERWISE NOTED.

2. ~~ALL PRIVATE STORMWATER FACILITIES SERVING AN INDIVIDUAL LOT SHALL BE THE RESPONSIBILITY OF THE LOT OWNER.~~

All private stormwater facilities serving only a single lot shall be the responsibility of the lot owner.

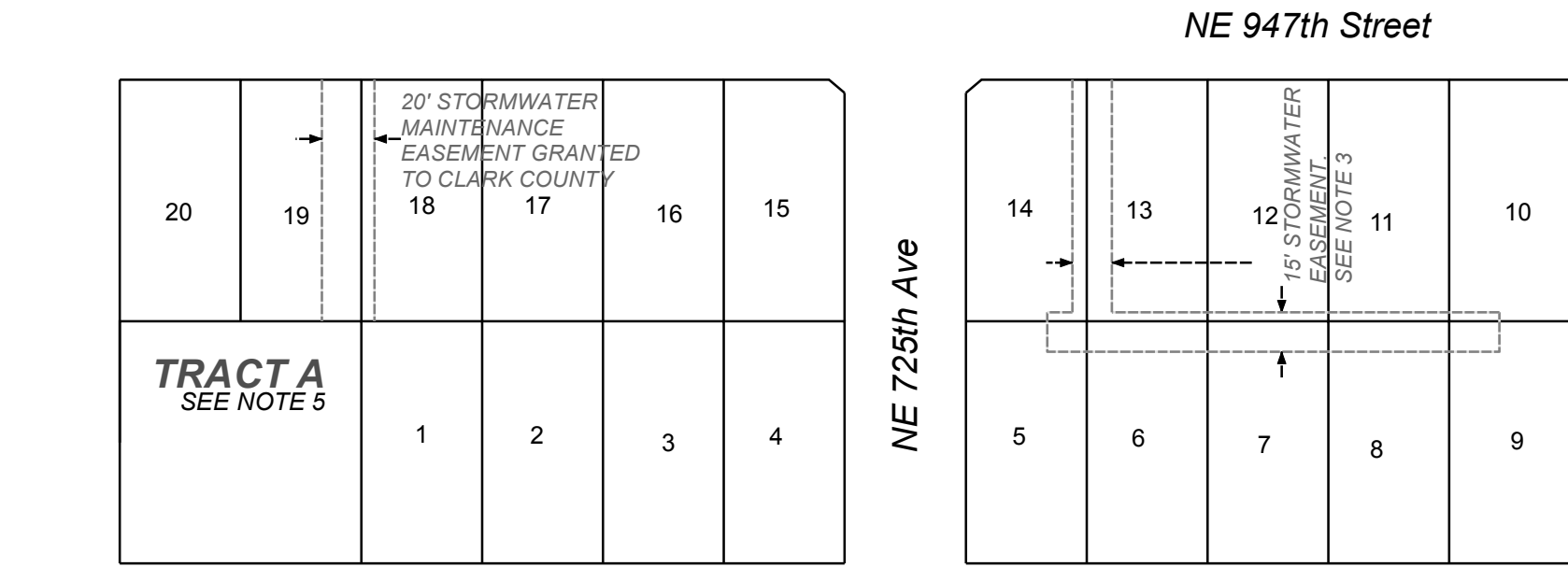
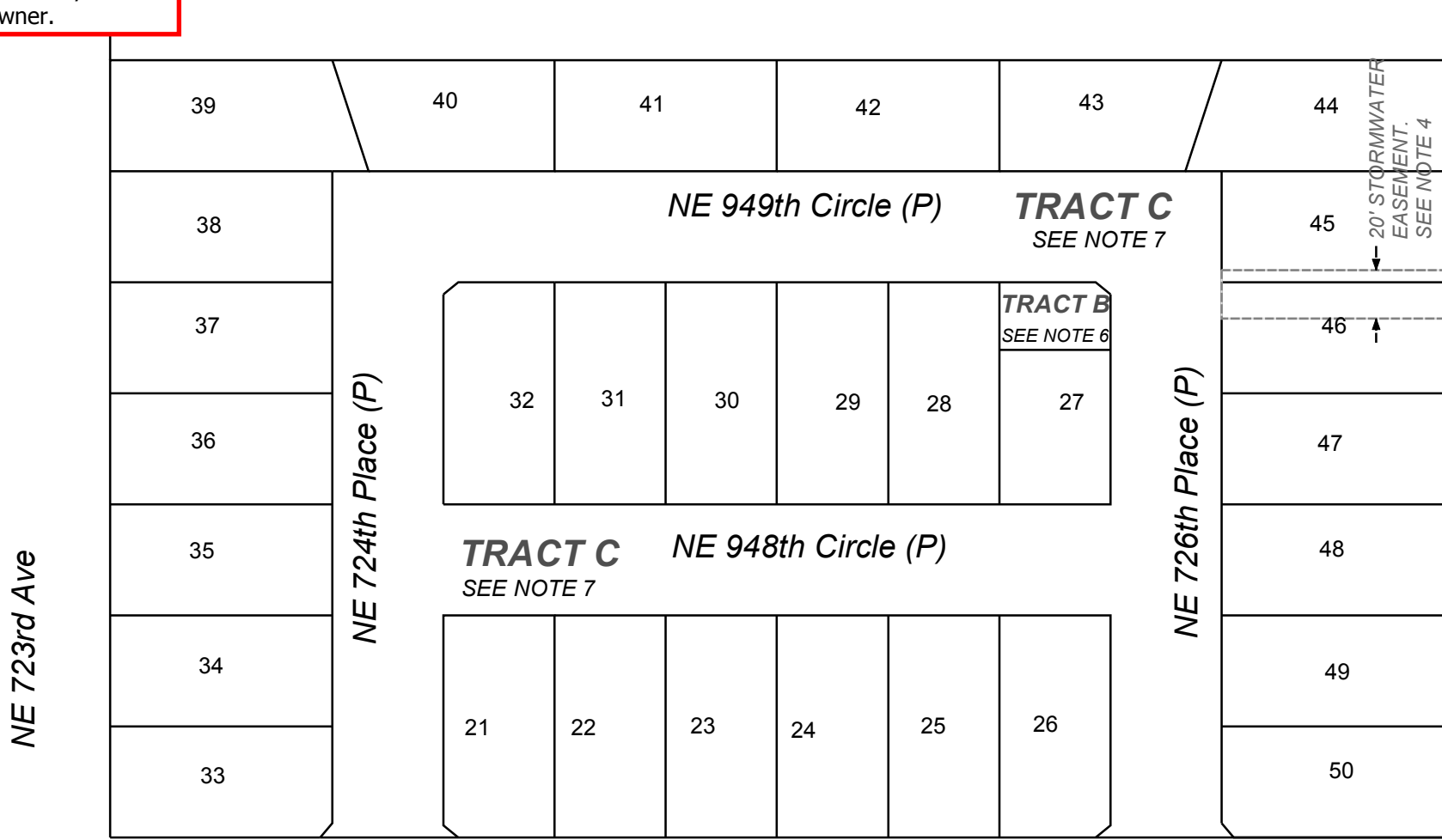
3. A STORMWATER MAINTENANCE EASEMENT IS GRANTED TO THE H.O.A.

4. A STORMWATER MAINTENANCE EASEMENT IS GRANTED TO THE H.O.A. ALSO AN INSPECTION EASEMENT IS GRANTED TO CLARK COUNTY.

5. STORM TRACT "A" IS DEDICATED TO CLARK COUNTY.

6. STORM TRACT "B" IS DEDICATED TO THE HOMEOWNERS ASSOCIATION. ALSO AN INSPECTION EASEMENT IS GRANTED TO CLARK COUNTY.

7. TRACT "C" IS DEDICATED TO THE HOMEOWNERS ASSOCIATION FOR USE AS PRIVATE ROADWAYS. ACCESS EASEMENTS ARE GRANTED TO LOTS 21 THROUGH 50 FOR INGRESS & EGRESS. ALSO AN INSPECTION ACCESS EASEMENT TO STORM TRACT "B" IS GRANTED TO CLARK COUNTY ACROSS TRACT "C."



LOCATED IN

PLANNING DIRECTOR

ASSESSOR

COUNCILORS

COUNTY ENGINEER

SURVEYOR'S CERTIFICATE

HEALTH DEPARTMENT

AUTIDOR'S CERIFICATE

